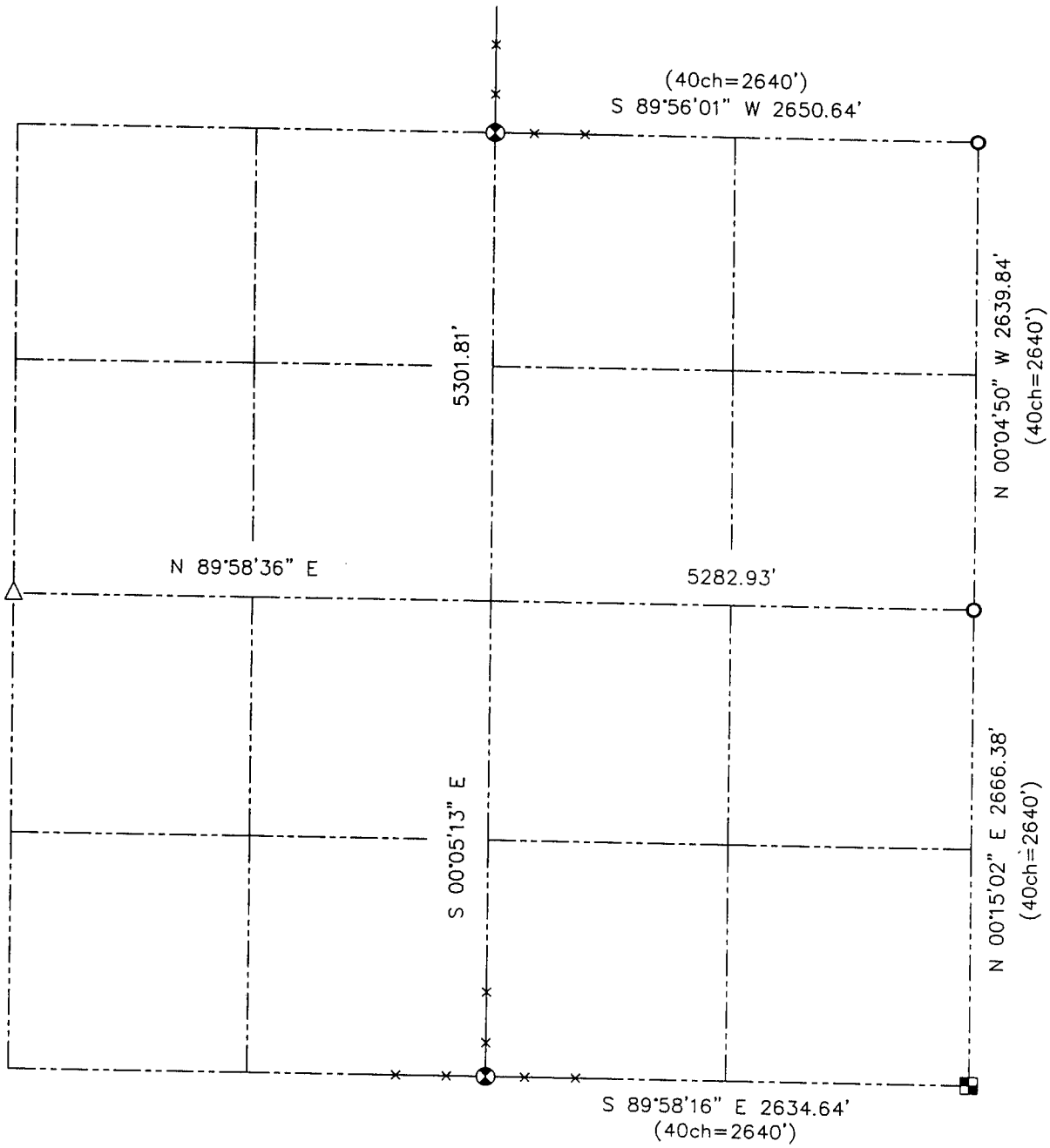


**U.S. PUBLIC LAND SURVEY MONUMENT RECORD - GRANT COUNTY, WI**  
 Summary of Section 32, Town 2 North Range 2 West, Town of Paris



**LEGEND**

- ⊗ No. 6 rebar found with Grant County Aluminum Cap
- No. 6 rebar found
- Aluminum Monument found with Grant County Aluminum Cap
- △ 1" diameter iron pipe found
- x— Approximate existing fence location
- ( ) Recorded as



Relationship of all section corners to other section corners shall be shown hereon by bearing and distance or grid coordinates. Bearing reference shown below.

Dated this 26th day of February, 2002



Bearings referenced to the East-West Quarter line of Section 32, which is assumed to bear N 89°58'36" E.

SKETCH NOT TO SCALE

**AUSTIN ENGINEERING, LLC**

4211 HWY 81 EAST, LANCASTER, WI 53813  
 PHONE 608-723-6363 FAX 608-723-6702

FIELDBOOK: SDR33, 2135  
 G: \T2NR2W\26DOT  
 C: \SWA\TIE\T2NR2W\32SUM

CREW: BS-SB-SA-BD  
 DRAWN BY: SW AUSTIN  
 APPROVED: LL AUSTIN