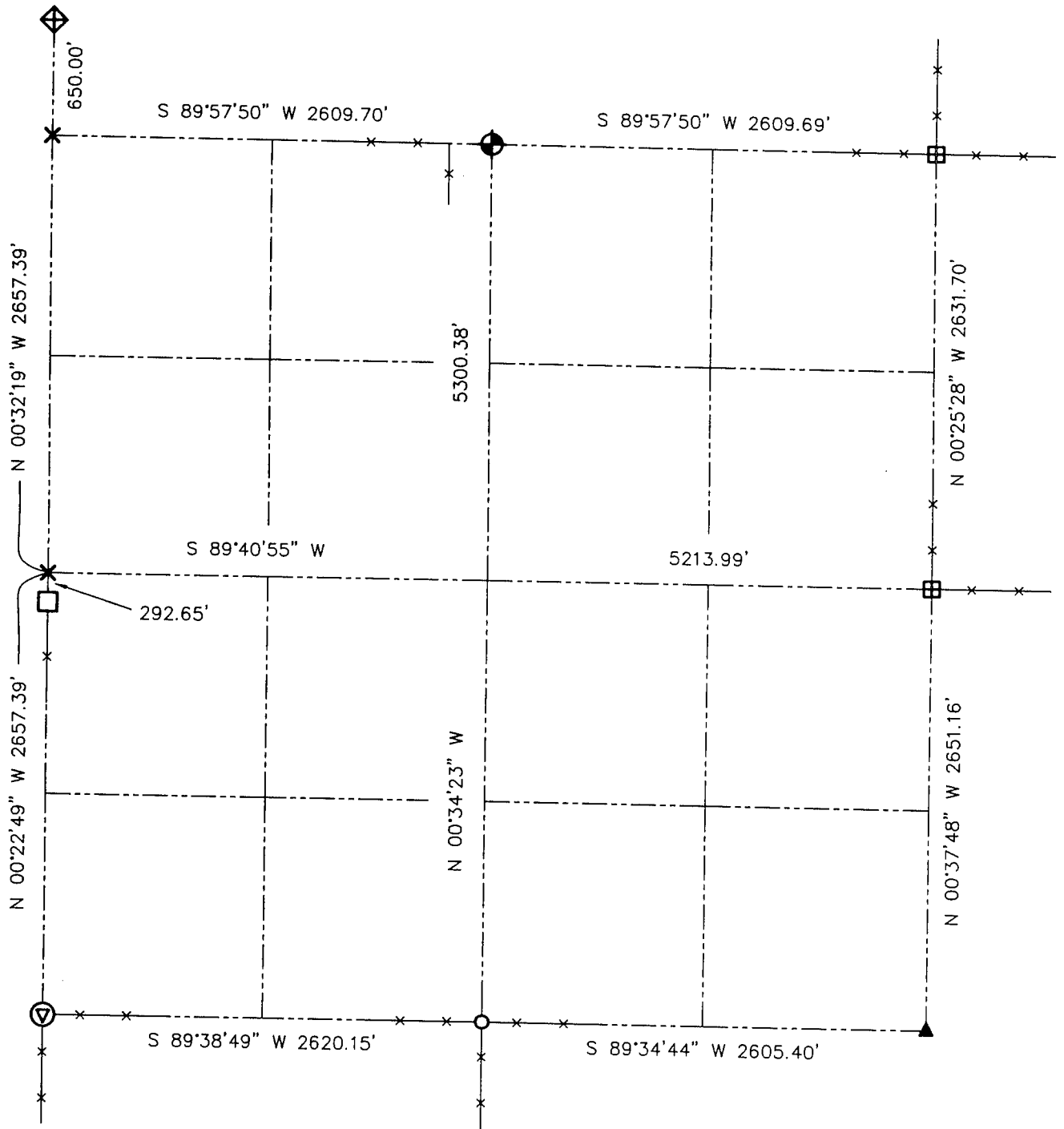


U.S. PUBLIC LAND SURVEY MONUMENT RECORD - GRANT COUNTY, WI
 Summary of Section 20, Town 2 North Range 2 West, Town of Paris



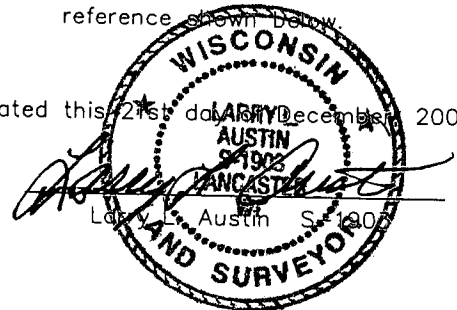
LEGEND

- NUMBER 8 x 30" REBAR SET WITH GRANT COUNTY ALUMINUM CAP
- 3" DIAMETER IRON PIPE WITH DOT ALUMINUM CAP FOUND
- RAILROAD SPIKE FOUND BASE OF STONE
- NUMBER 6 IRON BAR FOUND
- 2" DIAMETER IRON PIPE FOUND
- BERNSTEN CAST ALUMINUM MONUMENT FOUND
- ARMY CORP. MONUMENT FOUND
- CORNER FALLS IN RIVER NO MONUMENT SET



Relationship of all section corners to other section corners shall be shown hereon by bearing and distance or grid coordinates. Bearing reference shown below.

Dated this 21st day of December, 2001



Bearings referenced to the North-South Quarter line of Section 20, which is assumed to bear S 89°40'55" W.

SKETCH NOT TO SCALE

AUSTIN ENGINEERING, LLC

4211 HWY 81 EAST, LANCASTER, WI 53813
 PHONE 608-723-6363 FAX 608-723-6702

FIELDBOOK: SDR33, 2106
 G: \T2NR2W\20A
 C: \SWA\TIE\T2NR2W\20SUM

CREW: BS-SB-SA-BD
 DRAWN BY: SW AUSTIN
 APPROVED: LL AUSTIN