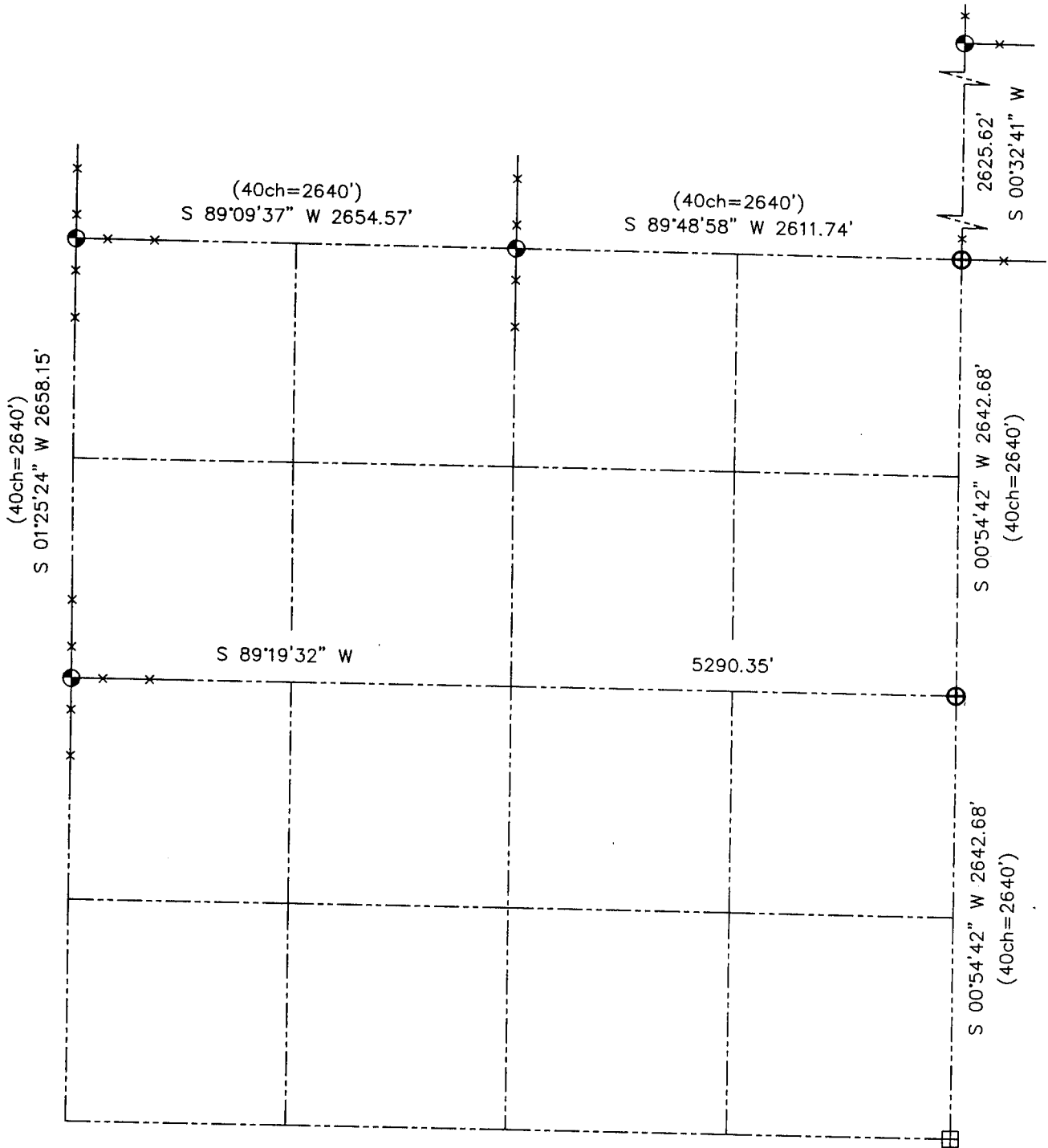


U.S. PUBLIC LAND SURVEY MONUMENT RECORD - GRANT COUNTY, WI
 Summary of Section 16, Town 2 North Range 2 West, Town of Paris



LEGEND

- ⊕ No. 8 rebar found with Grant County Aluminum Cap
- ⊙ No. 8 x 30" rebar set with Grant County Aluminum Cap - wt=2.67#/l.f.
- ⊞ Cast Aluminum Monument found
- () Recorded as
- x— Approximate location of existing fence



Relationship of all section corners to other section corners shall be shown hereon by bearing and distance or grid coordinates. Bearing reference shown below.

Dated this 26th day of February, 2002

LARRY L. AUSTIN
 S-1903
 LANCASTER, WISCONSIN
 LAND SURVEYOR

Bearings referenced to the East-West Quarter of Section 16, which is assumed to bear S 89°19'32" W.

SKETCH NOT TO SCALE

AUSTIN ENGINEERING, LLC

4211 HWY 81 EAST, LANCASTER, WI 53813
 PHONE 608-723-6363 FAX 608-723-6702

FIELDBOOK: SDR33, 2135, 2106
 G: \T2NR2W\26DOT
 C: \SWA\TIE\T2NR2W\16SUM

CREW: BS-SB-SA-BD
 DRAWN BY: SW AUSTIN
 APPROVED: LL AUSTIN