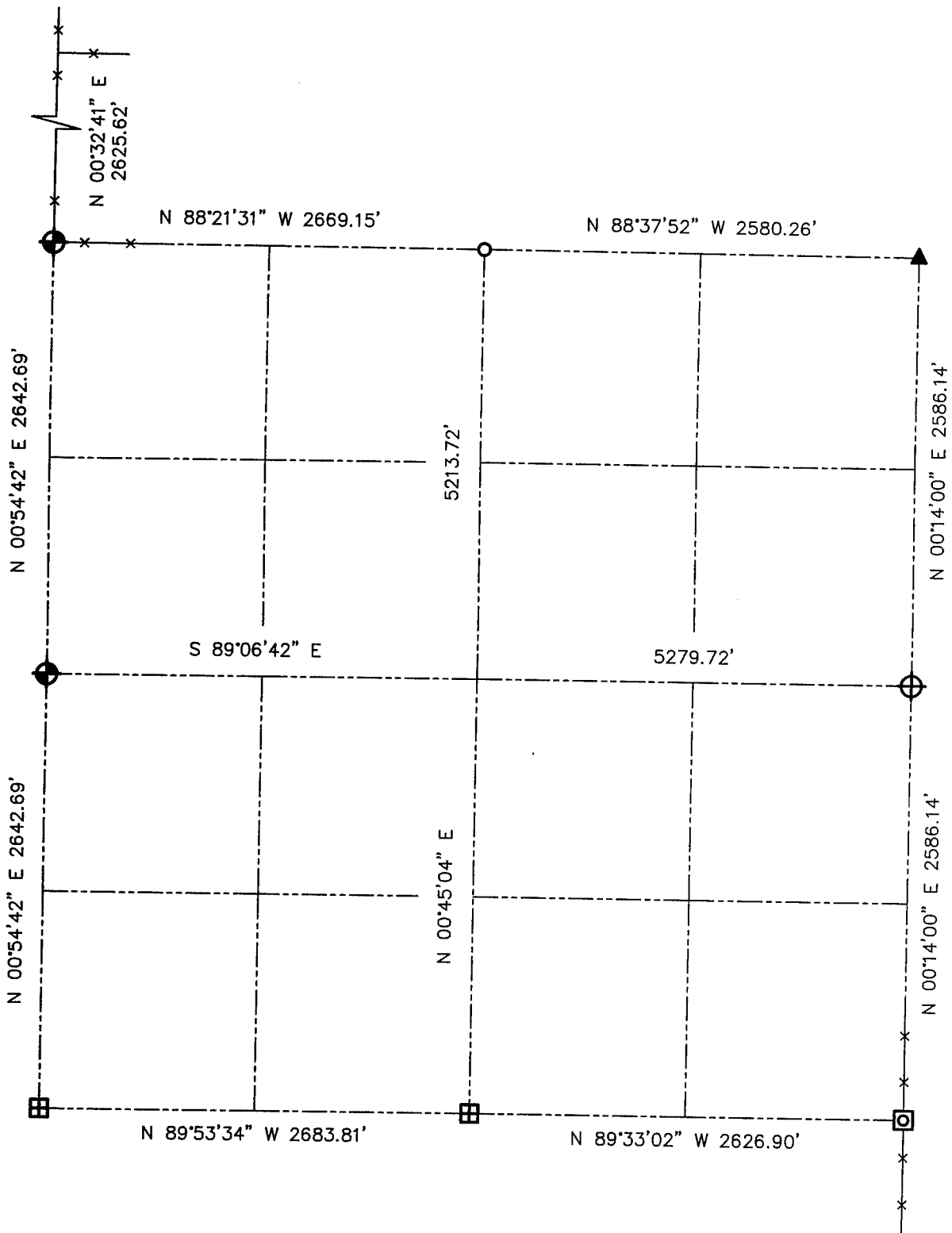


U.S. PUBLIC LAND SURVEY MONUMENT RECORD - GRANT COUNTY, WI
 Summary of Section 15, Town 2 North Range 2 West, Town of Paris



LEGEND

- NUMBER 8 x 30" REBAR SET WITH GRANT COUNTY ALUMINUM CAP
- NUMBER 6 REBAR FOUND WITH GRANT COUNTY ALUMINUM CAP
- NUMBER 8 REBAR FOUND WITH GRANT COUNTY ALUMINUM CAP
- CAST ALUMINUM MONUMENT FOUND
- NUMBER 6 IRON BAR FOUND
- 2" IRON PIPE FOUND
- APPX EXISTING FENCE



Relationship of all section corners to other section corners shall be shown hereon by bearing and distance or grid coordinates. Bearing reference shown below.

Dated this 12th day of November, 2001



Bearings referenced to West line of the SW 1/4 of Section 15, which is assumed to bear N 00°54'42" E.

SKETCH NOT TO SCALE