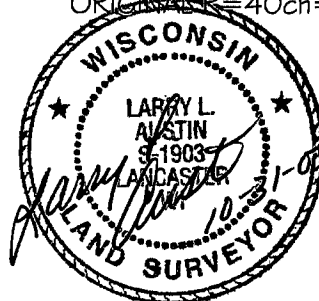
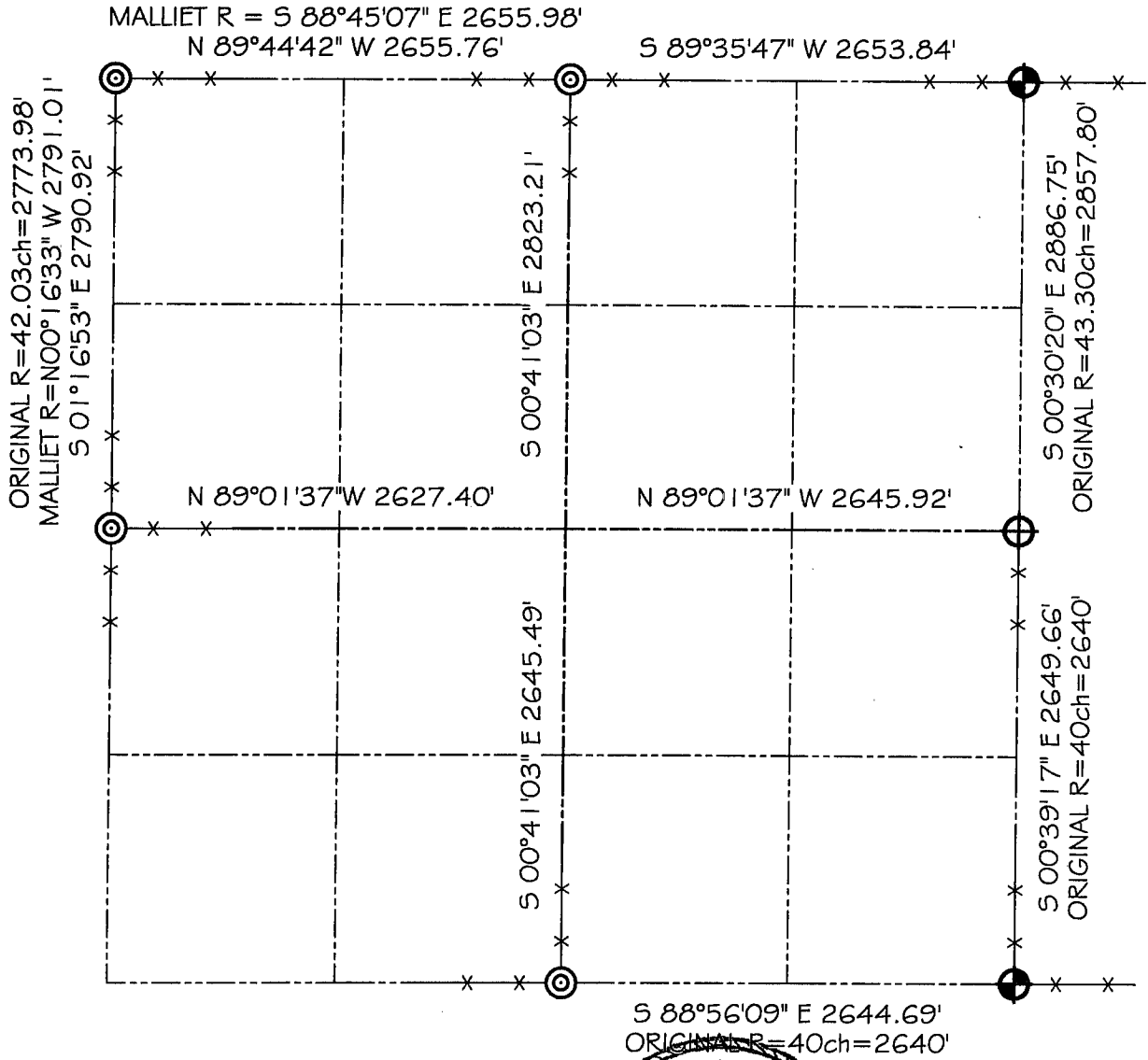





GRANT COUNTY SECTION SUMMARY

3 - 2N - 2W
SECTION TOWN RANGE



LEGEND

-  NO. 8 X 30" REBAR SET WITH GRANT COUNTY ALUMINUM CAP
-  NO. 8 REBAR FOUND WITH GRANT COUNTY ALUMINUM CAP
-  NO. 6 REBAR FOUND

NOTE:

Relationships of all section corners to other section corners shall be shown hereon by bearing and distance or grid coordinates
Show or describe bearing reference



BEARINGS REFERENCED TO THE NORTH-SOUTH 1/4 LINE
OF SECTION 3, WHICH IS ASSUMED TO BEAR S 00°41'03" E.