

# CERTIFIED LAND CORNER

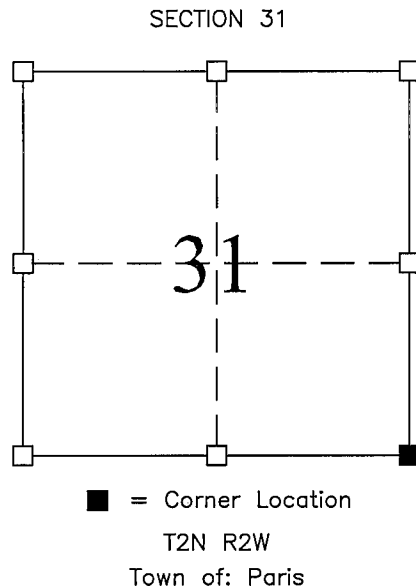
## STATE OF WISCONSIN COUNTY OF GRANT

### CERTIFICATE

I, Stanley King, do hereby certify that on the 29th day of September, 2004, I found no evidence of the South East corner of SECTION 31, T2N, R2W, Fourth Principal Meridian, and I re-established said corner according the Wisconsin Statutes as shown and described hereon.

Dated this 29th day of September, 2004

*Stanley King*  
 Registered Land Surveyor--S-2001  
 Title



Seal:

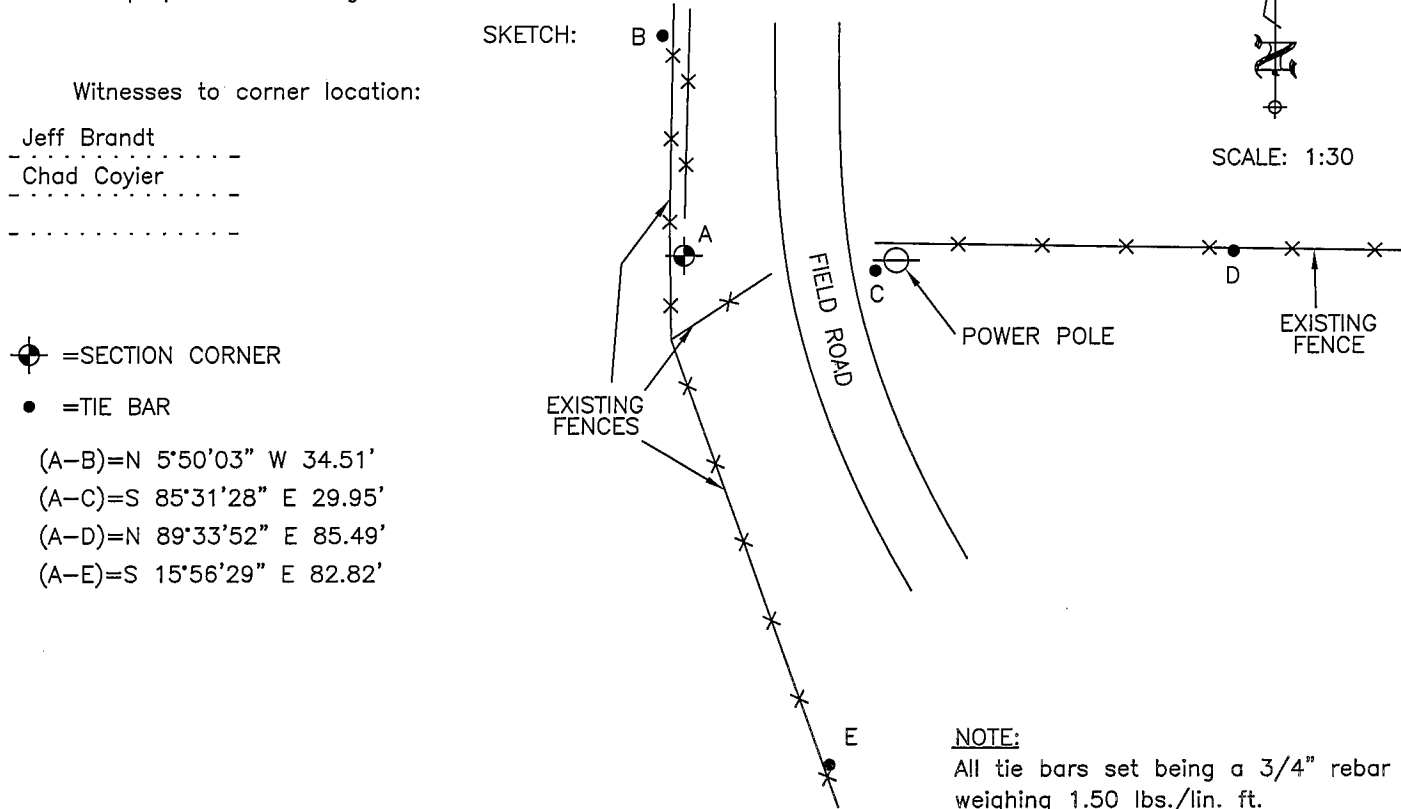
History of original corner establishment:

DIVISION OF SECTION  
ORIGINAL CORNER SET IN 1833 BY LUCIUS LYON

Description of corner evidence found:

FOUND NO EVIDENCE OF THE CORNER OR ITS WITNESS-- SET A REBAR WEIGHING A MIN. OF 1.50 LBS. PER LINEAL FOOT WITH GRANT COUNTY MONUMENT CAP. CORNER SET IN EXISTING FENCE TO EAST AND NORTH. VERIFIED LOCATION USING EDM AND GPS TRAVERSE.

Description of corner and witness monuments, references, and accessories used to perpetuate the original or re-established location of this corner.



### SURVEY CONTROL ORDER

**BLACKHAWK**  
ENGINEERING, Ltd.

Civil & Municipal Engineers and Building Design  
 2 INSIGHT DRIVE OFFICE PHONE: (608) 348-4433  
 PLATTEVILLE, WISCONSIN FAX: (608) 348-4449

Horizontal:	
Vertical:	

SURVEY CREW: JJB, CDC  
 DRAWN BY: JJB  
 DATE: 9/23/04  
 FILE: f:\acad12\2004\04-071\tiesht.dwg