

U.S. PUBLIC LAND SURVEY MONUMENT RECORD - GRANT COUNTY, WI

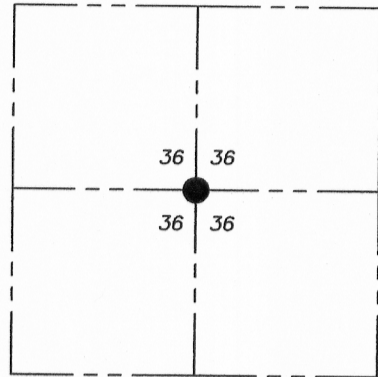
Section 36, Town 2 North Range 2 West, Town of Paris

CERTIFICATE:

I, Aaron J. Austin, Wisconsin Professional Land Surveyor, do hereby certify that the corner location on this record was determined by me and/or under my direct supervision and that this U.S. Public Land Survey Monument Record is correct and complete to the best of my knowledge and belief.

Dated this 2nd day of November, 2015.

Aaron J. Austin
 Aaron J. Austin, S-2922



● = CORNER LOCATION

HISTORY OF CORNER ESTABLISHMENT:

Corner was not set with original survey.
 1844-Wiltse set the corner on a Survey filed in Book A, Page 223.
 1852-Overton tied to the corner on a Survey in Book B, Page 305.
 More recent surveys established and accepted this corner location at the intersection of North-South and East-West 1/4 lines, but no monuments were set.

DESCRIPTION OF CORNER EVIDENCE FOUND:

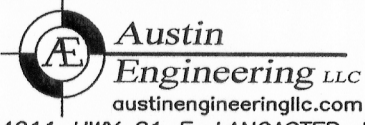
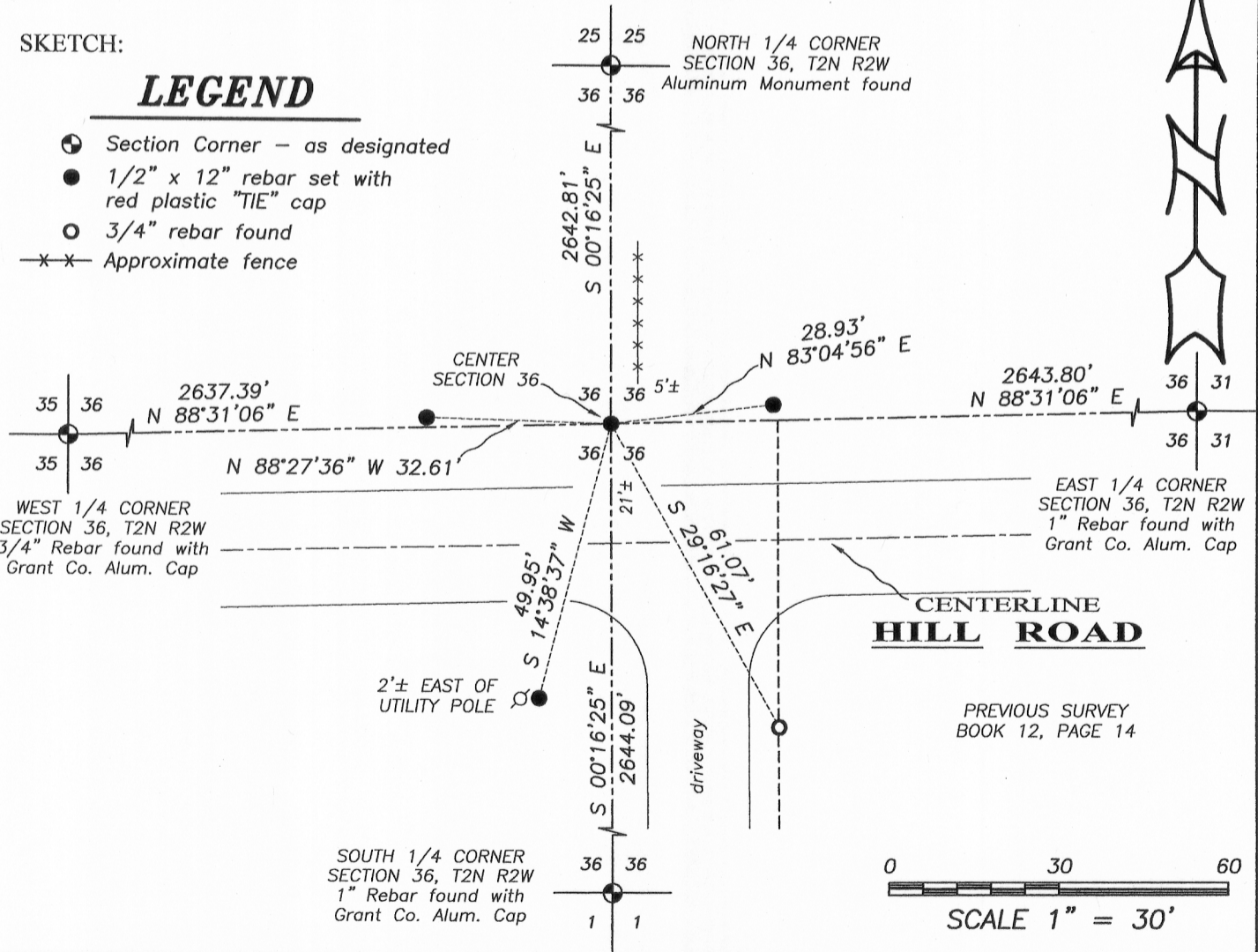
I set a 3/4" rebar at the intersection of the North-South and East-West 1/4 lines, which coincided with monuments found from a previous survey by Larry Austin filed in Book 12, Page 14. I set 4 witness corners as shown hereon. I verified this location with E.D.M. and G.P.S. methods.

DESCRIPTION OF CORNER AND WITNESS MONUMENTS, references and accessories used to perpetuate the original or re-established location of this corner. Witnesses to corner location Shane Austin.

SKETCH:

LEGEND

- Section Corner - as designated
- 1/2" x 12" rebar set with red plastic "TIE" cap
- 3/4" rebar found
- x-x- Approximate fence



Austin Engineering LLC
 austinengineeringllc.com
 4211 HWY 81 E, LANCASTER, WI 53813
 PHONE: 608-723-6363 FAX: 608-723-6702

JOB NO: 15s215
 H:\CRD\15s215
 H:\TIE\T2NR2W\119.5

FIELDBOOK: TDSR
 DRAWN BY: AJ AUSTIN
 CREW: SW AUSTIN

119.5

NOV 16 2015