

U.S. PUBLIC LAND SURVEY MONUMENT RECORD - GRANT COUNTY, WI

Section 33, Town 2 North Range 2 West, Town of Paris (a)

NOTE: This form is intended and designed to fulfill all requirements of the Wisconsin Administrative Code Chapter A-E 7.08, U.S. Public Land Survey Monument Record (3) (a) (b) (c) (d) (e) (f) (g) (h) (i).

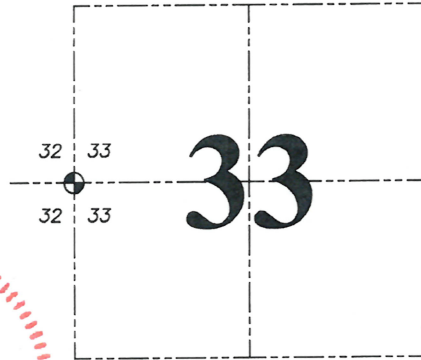
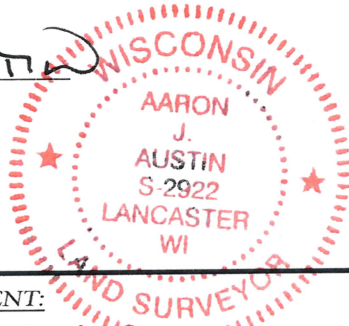
CERTIFICATE: (i)

I, Aaron J. Austin, Wisconsin Professional Land Surveyor, do hereby certify that the corner location on this record was determined by me and/or under my direct supervision and that this U.S. Public Land Survey Monument Record is correct and complete to the best of my knowledge and belief.

Dated this 24th day of February, 2023.

Aaron J. Austin

Aaron J. Austin, S-2922



⊕ = CORNER LOCATION

Grant County Coordinates:
NAD 83 (2011)
Northing: 434,002.24
Easting: 842,843.18

HISTORY OF CORNER ESTABLISHMENT:

Original corner was set in 1832 by Lucius Lyon.
Larry Austin set a 3/4" Rebar and prepared a Survey Monument Record dated 9/29/1993.
Kenneth Buesing found a 3/4" Rebar and prepared a Survey Monument Record dated 11/7/2017.

DESCRIPTION OF CORNER EVIDENCE FOUND: (b) (f) (g) (h)

I found a 3/4" Rebar and two witness corners. I set two additional witness corners after I verified the Monument's location with G.P.S. and E.D.M. methods.

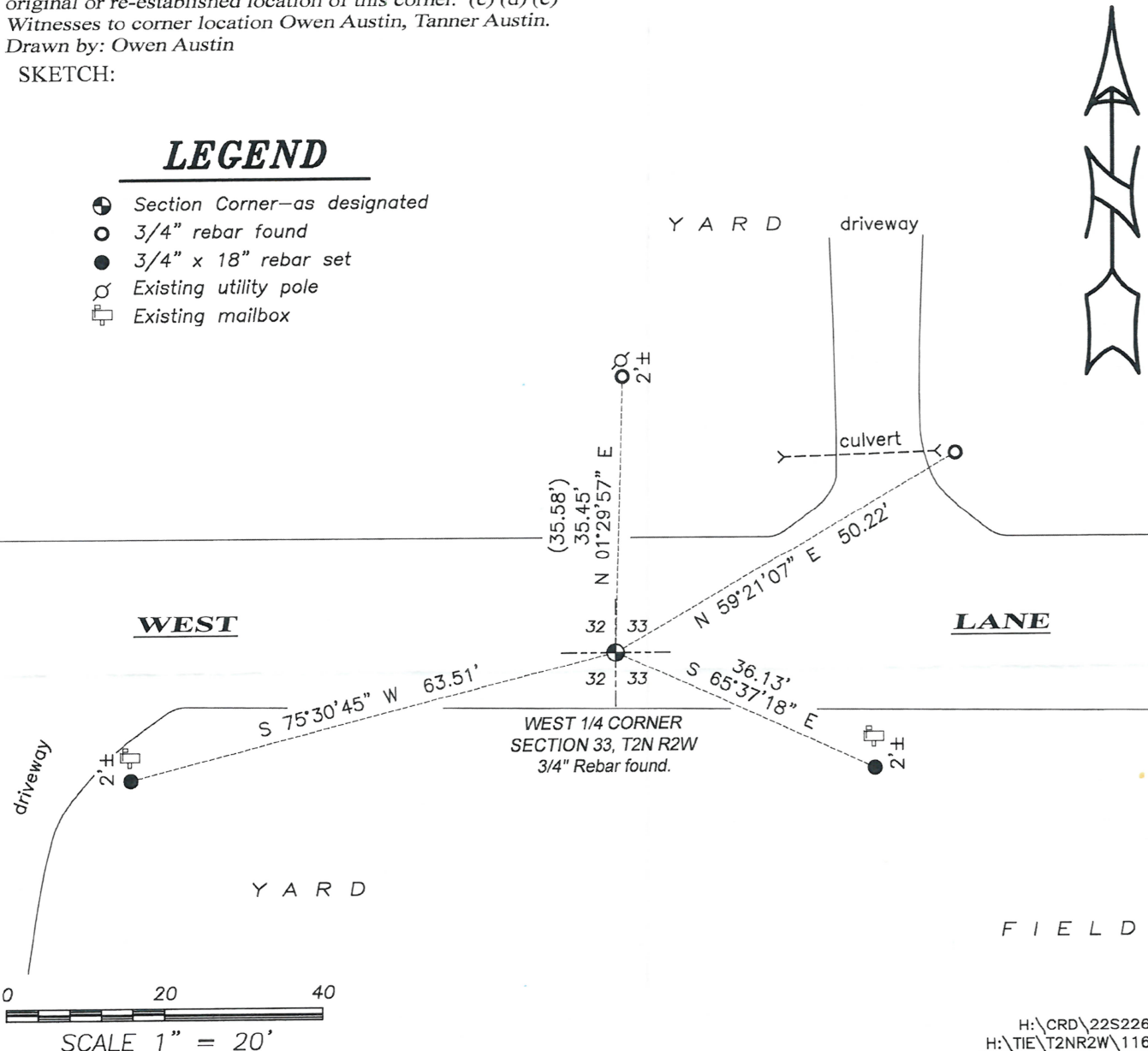
DESCRIPTION OF CORNER AND WITNESS MONUMENTS, references and accessories used to perpetuate the original or re-established location of this corner. (c) (d) (e)

Witnesses to corner location Owen Austin, Tanner Austin.
Drawn by: Owen Austin

SKETCH:

LEGEND

- ⊕ Section Corner—as designated
- 3/4" rebar found
- 3/4" x 18" rebar set
- ⊗ Existing utility pole
- ⊞ Existing mailbox



22108
and
22116

Prepare's Name: Kenneth L. Buesing Address: 1212 Locust St. Dubuque, IA Telephone: (563) 556-4389

SLSI 9-94

UNITED STATES PUBLIC LAND SURVEY MONUMENT RECORD

OF

Land Survey Monuments situated in Section 33, Township 2N, Range 2W, of the Fourth Principal Meridian, GRANT County, Wisconsin, Previously recorded in SEE BELOW in County Recorder's Office.
(book, page, document number, etc.)

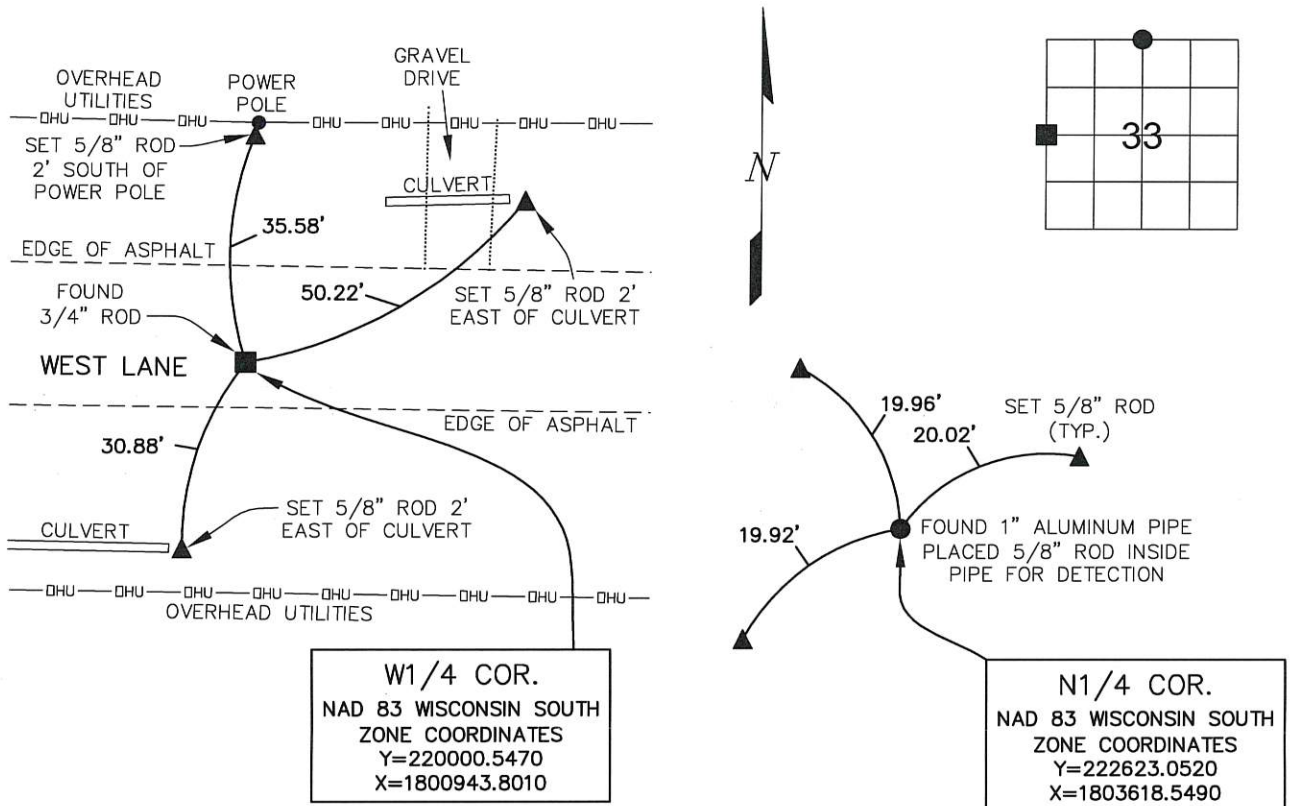
(Show reason for preparing this certificate, the evidence and detailed procedures used in establishing the corner positions and monumentation found or placed.)

Monument Description and Remarks: FOUND 3/4" ROD @ THE W1/4 CORNER. BURIED 1" IN ASPHALT ROAD.

FOUND 1" ALUMINUM PIPE @ THE N1/4 CORNER. PLACED 5/8" ROD INSIDE PIPE FOR DETECTION. BURIED 12".

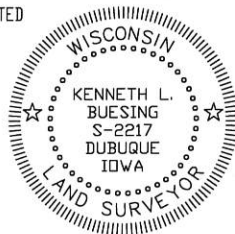
PLAN - VIEW

(Show a minimum of four reference ties to durable physical objects, relevant monuments and physical conditions that will enable recovery of the corner.)



I HEREBY CERTIFY THAT THIS LAND SURVEYING DOCUMENT WAS PREPARED AND THE RELATED SURVEY WORK WAS PERFORMED BY ME OR UNDER MY DIRECT PERSONAL SUPERVISION, THE U.S. PUBLIC LAND SURVEY MONUMENT RECORD IS CORRECT AND COMPLETE TO THE BEST OF MY KNOWLEDGE AND BELIEF AND THAT I AM A DULY LICENSED LAND SURVEYOR UNDER THE LAWS OF THE STATE OF WISCONSIN.

Kenneth L. Buesing
KENNETH L. BUESING (DATE) 7, Nov. 2017
LICENSE NUMBER S-2217
MY LICENSE RENEWAL DATE IS JANUARY 31, 2018



Corners	List Corners to be Indexed	Section	Twp	Range
W1/4 COR.	33	2N	2W	
N1/4 COR.	33	2N	2W	

BUESING
ASSOCIATES INC.
ENGINEERS AND SURVEYORS
1212 LOCUST ST, DUBUQUE, IA
(563) 556-4389

MONUMENT RECORD

COUNTY: GRANT
TOWNSHIP: PARIS

DATE PLOTTED: 11-06-17
DATE REVISED:

FIELD BOOK # .
PAGE # SHOT IN

DRAWING
17217-01

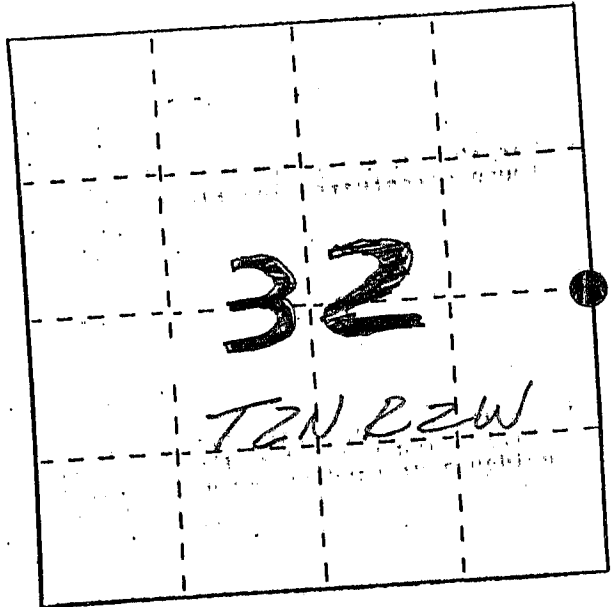
U. S. PUBLIC LAND SURVEY MONUMENT RECORD

INSTRUCTIONS: This record shall show the location of the corner and shall include all of the following nine elements (a through i).

(a) Identify the corner by reference to the U.S. public land survey system.

● = Corner monument restored.

E 1/4 COR OF SEC 32,
T2N, R2W OF 4TH P.M
GRANT CO., WI

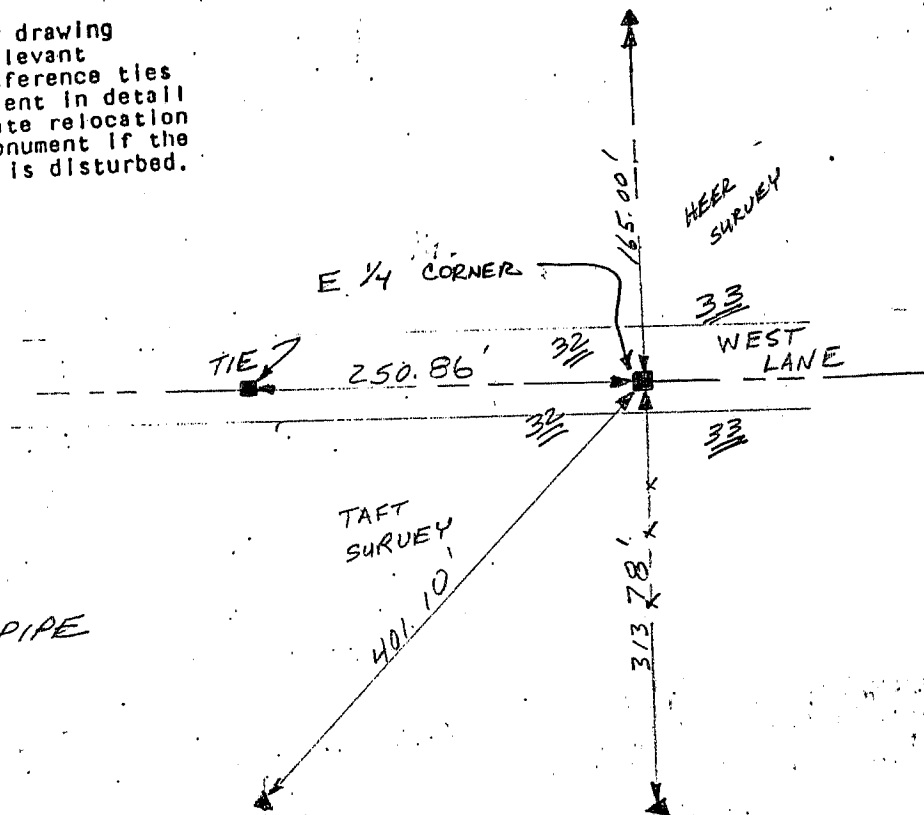


(b) Describe any record evidence, monument evidence, occupational evidence, testimonial evidence or any other material evidence you considered, and whether the monument was found or placed.

MONUMENT WAS PLACED BASED ON
DIMENSION FROM UNFILED SURVEY OF HEER
SURVEY

(c) In the plan view drawing below, provide reference ties to at least 4 witness monuments, or, if the location is within a municipality, to at least 2 witness monuments. (Witness monuments shall be made of concrete, natural stone, iron or other equally durable material.) Describe witness monuments.

(d) Show a plan view drawing depicting the relevant monuments and reference ties which is sufficient in detail to enable accurate relocation of the corner monument if the corner monument is disturbed. Indicate north.



LEGEND

▲ 1" x 24" IRON PIPE

■ 3/4" x 24" BAR



NOSCALE

Describe any material discrepancy between the location of the corner as restored or reestablished and the location of that corner as previously restored or reestablished by distance and direction. Show the discrepancy on the plan view drawing under (d), above. Show the distances between the corner as previously restored or reestablished and (1) the corner as restored or reestablished, and (2) to at least 2 of the witness monuments shown on the drawing in (d), above.

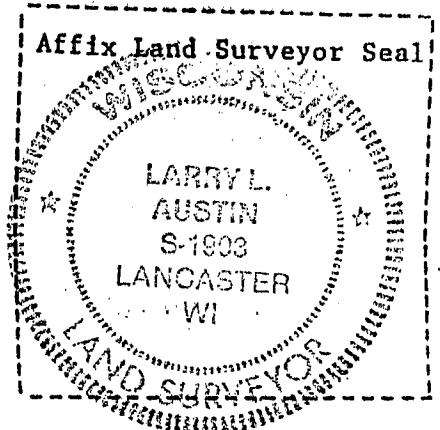
None

(f) Was the corner restored through acceptance of (1) an obliterated evidence location, or, (2) a found perpetuated location?

(1) OBLITERATED LOC.

(g&h) Was the corner reestablished through lost corner proportionate methods? If so, show the method, including the directions and distances to other public land survey corners used as evidence or used for proportioning in determining the corner location?

NO



(i) I, LARRY AUSTIN
(type or print name) certify that the corner location shown on this record was determined by me or under my direction and control and that this U.S. Public Land Survey Monument Record is correct and complete to the best of my knowledge and belief.

Larry L. Austin
Signature

9/29/93
Date