

U.S. PUBLIC LAND SURVEY MONUMENT RECORD - GRANT COUNTY, WI

Section 32, Town 2 North Range 2 West, Town of Paris (a)

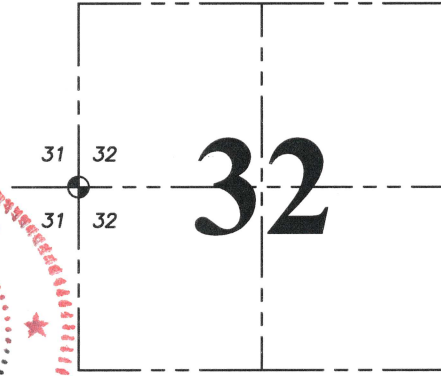
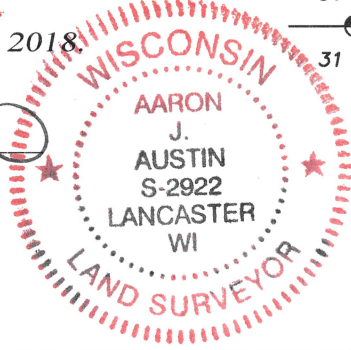
NOTE: This form is intended and designed to fulfill all requirements of the Wisconsin Administrative Code Chapter A-E 7.08, U.S. Public Land Survey Monument Record (3) (a) (b) (c) (d) (e) (f) (g) (h) (i).

CERTIFICATE: (i)

I, Aaron J. Austin, Wisconsin Professional Land Surveyor, do hereby certify that the corner location on this record was determined by me and/or under my direct supervision and that this U.S. Public Land Survey Monument Record is correct and complete to the best of my knowledge and belief.

Dated this 23rd day of November, 2018.

Aaron J. Austin
 Aaron J. Austin, S-2922



● = CORNER LOCATION

Grant County Coordinates:
 NAD 83 (2011)
 Northing: 434,000.06
 Easting: 837,560.27

HISTORY OF CORNER ESTABLISHMENT:

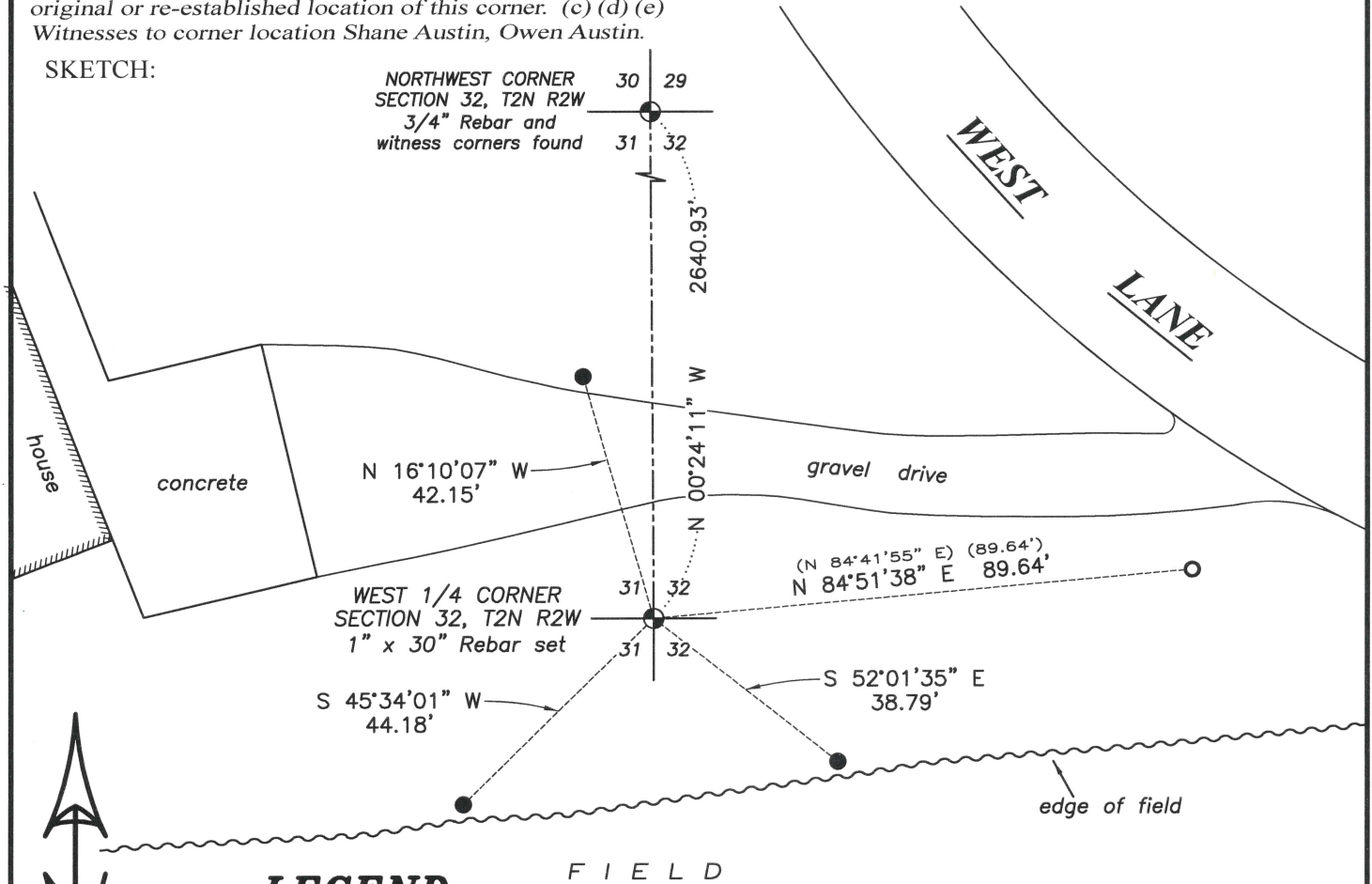
Lucius Lyon set the original corner in 1833.
 David Davis set a 1" iron pipe at the corner on a Survey dated 8-22-1979.
 Larry Austin found the 1" iron pipe as set by Davis and prepared a Survey Monument Record dated 2-26-2002.
 Several other surveys have accepted the location for the iron pipe.

DESCRIPTION OF CORNER EVIDENCE FOUND: (b) (f) (g) (h)

I found one witness corner. I set a 1" rebar at the corner based upon measurements from the one witness corner found and the Northwest corner of Section 32 per Survey by Larry Austin filed in Book 22, Page 45. I set three additional witness corners after I verified the monument's location with G.P.S. and E.D.M. methods.

DESCRIPTION OF CORNER AND WITNESS MONUMENTS, references and accessories used to perpetuate the original or re-established location of this corner. (c) (d) (e)
 Witnesses to corner location Shane Austin, Owen Austin.

SKETCH:



LEGEND

- Section Corner—as designated
- 1/2" rebar found
- 3/4" x 18" rebar set



SCALE 1" = 30'

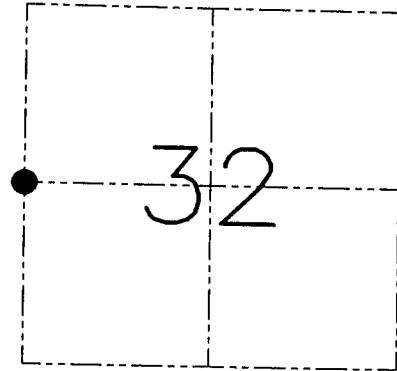
U.S. PUBLIC LAND SURVEY MONUMENT RECORD - GRANT COUNTY, WI
 Section 32, Town 2 North Range 2 West, Town of Paris

CERTIFICATE

I, Larry L. Austin, do hereby certify that the corner location on this record was determined by me and/or under my direct supervision and that this U.S. public land survey monument record is correct and complete to the best of my knowledge and belief.

Dated this 26th day of February, 2002

Larry L. Austin
 Larry L. Austin S-1903



● = CORNER LOCATION

HISTORY OF CORNER ESTABLISHMENT

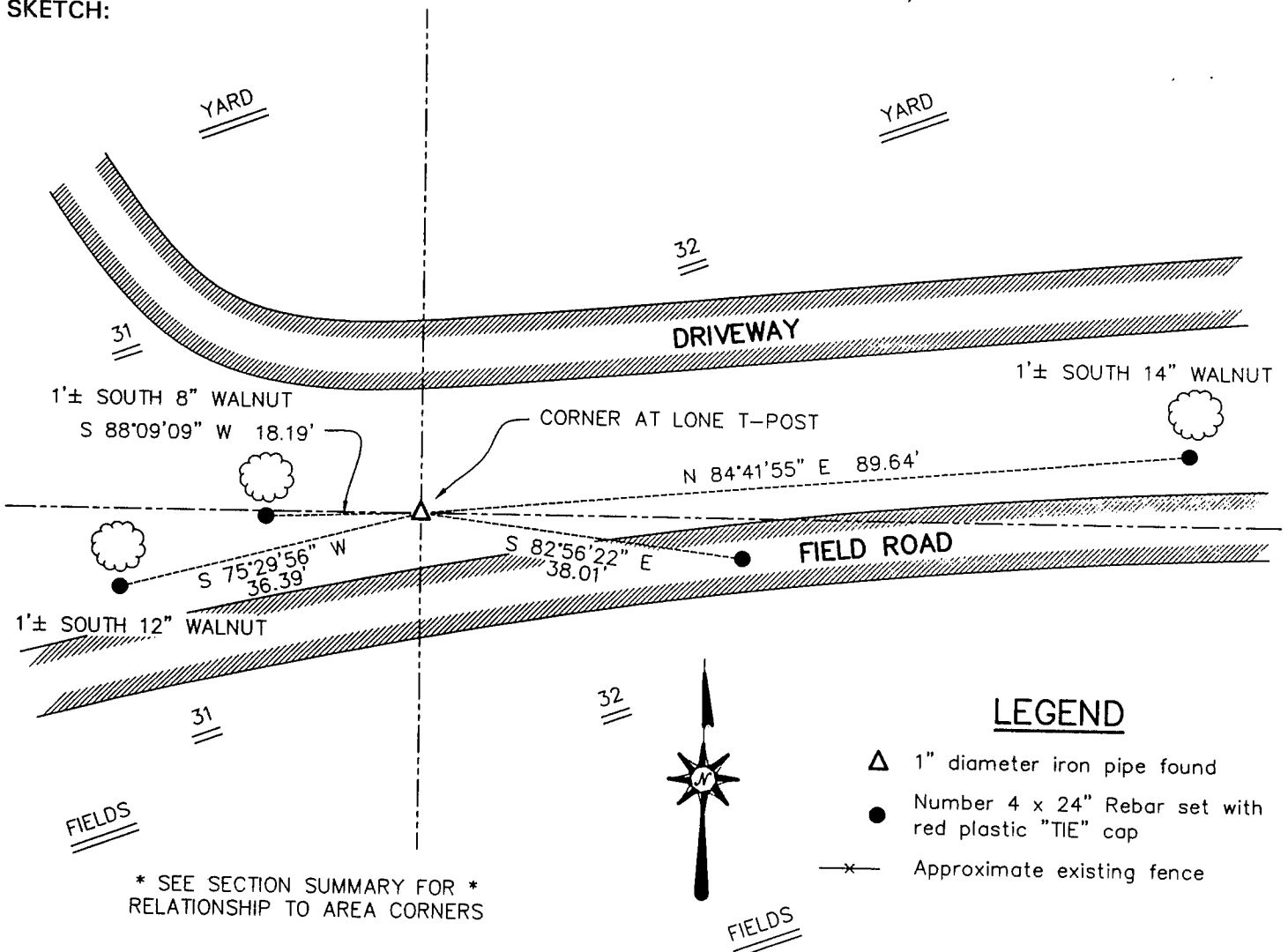
Corner was originally set in 1833 by Lucius Lyon. Corner has been used for various recent surveys as a 1" iron pipe.

DESCRIPTION OF CORNER EVIDENCE FOUND

I found the 1" iron pipe and accepted it after an EDM & GPS traverse of the area.

DESCRIPTION OF CORNER AND WITNESS MONUMENTS, references and accessories used to perpetuate the original or re-established location of this corner. Witnesses to the corner location Bobby Sedgwick & Shelby Blindert & Kelly Wolf

SKETCH:



* SEE SECTION SUMMARY FOR *
 RELATIONSHIP TO AREA CORNERS

LEGEND

- △ 1" diameter iron pipe found
- Number 4 x 24" Rebar set with red plastic "TIE" cap
- *— Approximate existing fence

SKETCH NOT TO SCALE

AUSTIN ENGINEERING, LLC

4211 HWY 81 EAST, LANCASTER, WI 53813
 PHONE 608-723-6363 FAX 608-723-6702

FIELDBOOK: SDR33, 2135
 G: \T2NR2W\26dot
 C: \SWA\TIE\T2NR2W\115
 CREW: BS-SB-KW

DRAWN BY: SW AUSTIN
 APPROVED: LL AUSTIN

CORNER NUMBER 115