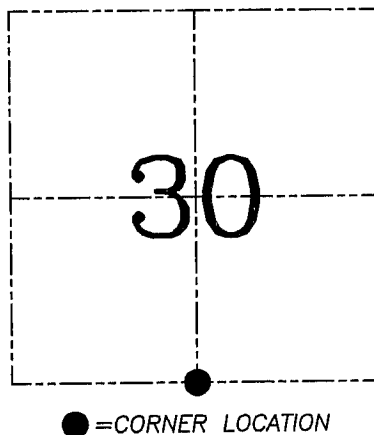
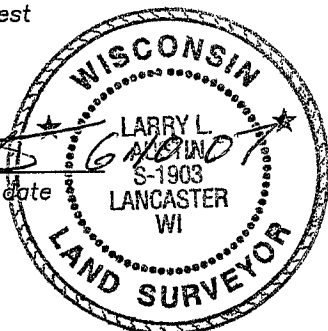


U.S. PUBLIC LAND SURVEY MONUMENT RECORD – GRANT COUNTY, WI
Section 30, Town 2 North Range 2 West, Town of Paris

CERTIFICATE

I, Larry L. Austin, do hereby certify that the corner location on this record was determined by me and/or under my direct supervision and that this U.S. public land survey monument record is correct and complete to the best of my knowledge and belief.

Larry L. Austin
 Larry L. Austin, S-1903



HISTORY OF CORNER ESTABLISHMENT

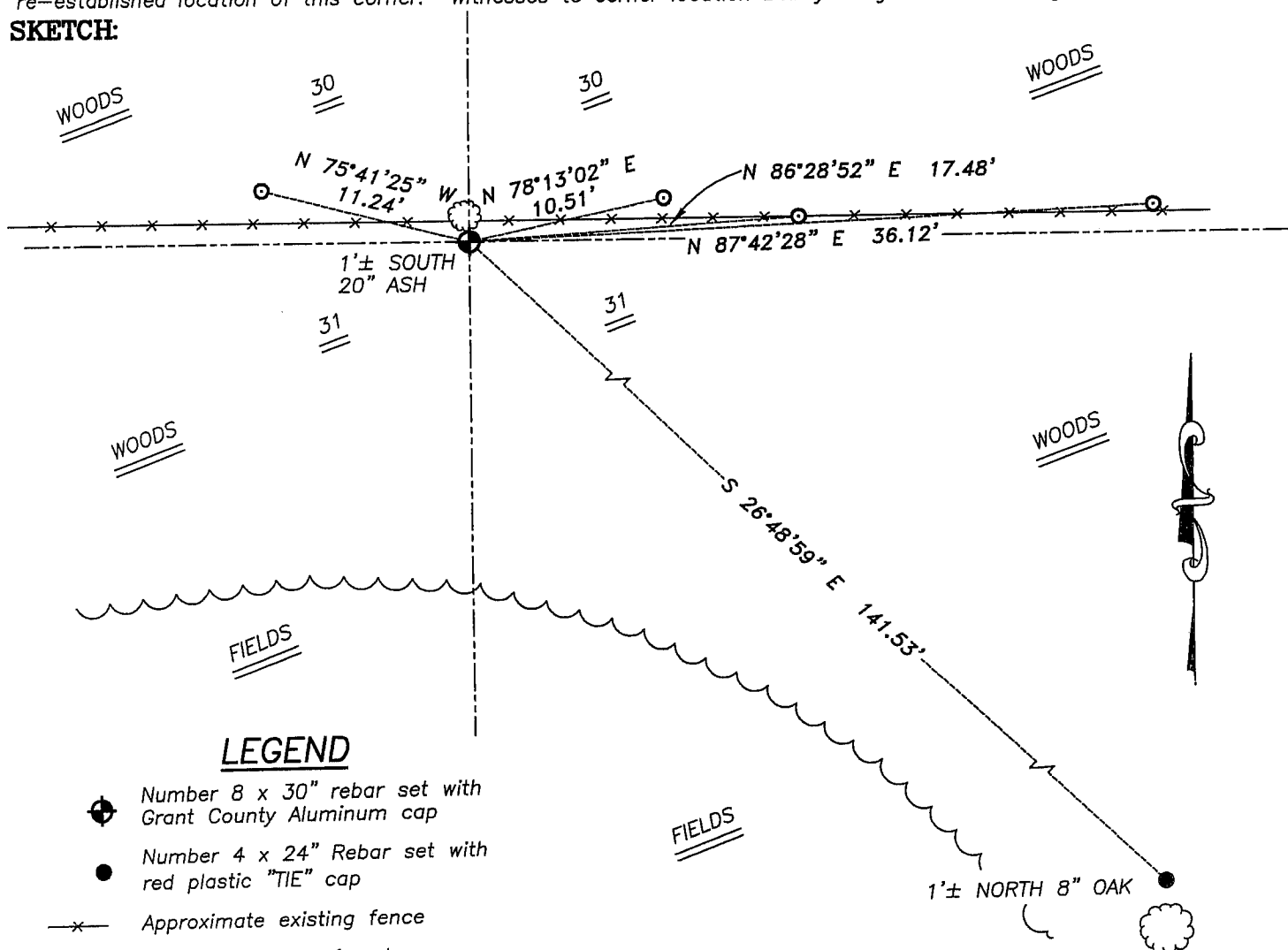
Corner was originally set in 1833 by Lyon. In 1941 U.S. Army Corps of Engineers reset the corner. In 1984 Midstate Associates Inc. tied to the corner. In 1996 I filed a tie sheet on the corner.

DESCRIPTION OF CORNER EVIDENCE FOUND

I reset the U.S. Army Corps of Engineers location. This location fit adjoining monumented and occupied corners. Verified this location using EDM & GPS methods.

DESCRIPTION OF CORNER AND WITNESS MONUMENTS, references and accessories used to perpetuate the original or re-established location of this corner. Witnesses to corner location Bobby Sedgwick & Brad Digman & Shane Austin

SKETCH:



LEGEND

- ⊕ Number 8 x 30" rebar set with Grant County Aluminum cap
- Number 4 x 24" Rebar set with red plastic "TIE" cap
- x— Approximate existing fence
- Number 4 Rebar found

SKETCH NOT TO SCALE



Austin Engineering LLC

4211 HWY 81 E, LANCASTER, WI 53813
 PHONE 608-723-6363 FAX 608-723-6702

JOB NUMBER 07S031
 FIELDBOOK: TDSR, 2700
 G:\T2NR2W\23
 H:\TIE\T2NR2W\112

DRAWN BY: SW AUSTIN
 APPROVED: LL AUSTIN

ANT COUNTY

Survey Monument Record

TYPE OF MONUMENT 3/4" X 24" IRON BAR SET

STATE PLANE COORDINATES: N _____
E _____

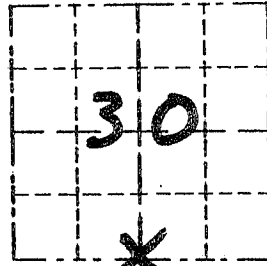
ELEVATION — M.S.L. DATUM: _____

THETA ANGLE: _____

FIELD BOOK: 96-12

PAGE (16)

CORNER NO. 112
SECTION 30
TOWN 2N
RANGE 2W



LOCATION
(Indicated by "X")

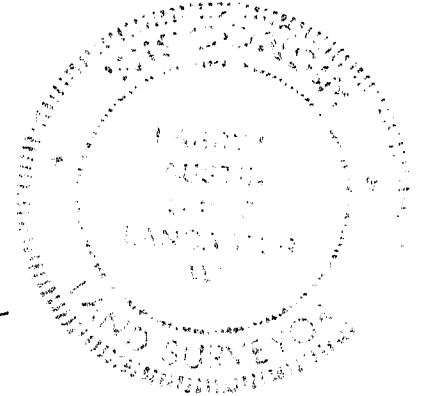


BASIS FOR MONUMENT LOCATION

(Use reverse side if necessary)

CORNER SET IN 1833 BY
LUCIUS LYON. ORIGINAL
BEARING TREES WERE
UNRECOVERABLE. NO RECORD OF
CORNER FOUND SINCE ORIGINAL
SURVEYS. CORNER SET IN EXISTING
FENCE FOR EAST/WEST LOCATION,
NORTH/SOUTH LOCATION ESTABLISHED
BY BEING ONLINE BETWEEN SOUTHEAST
CORNER AND THE SOUTH WEST CORNER.
VERIFIED ITS LOCATION USING EDM
TRAVERSE.

SEAL:



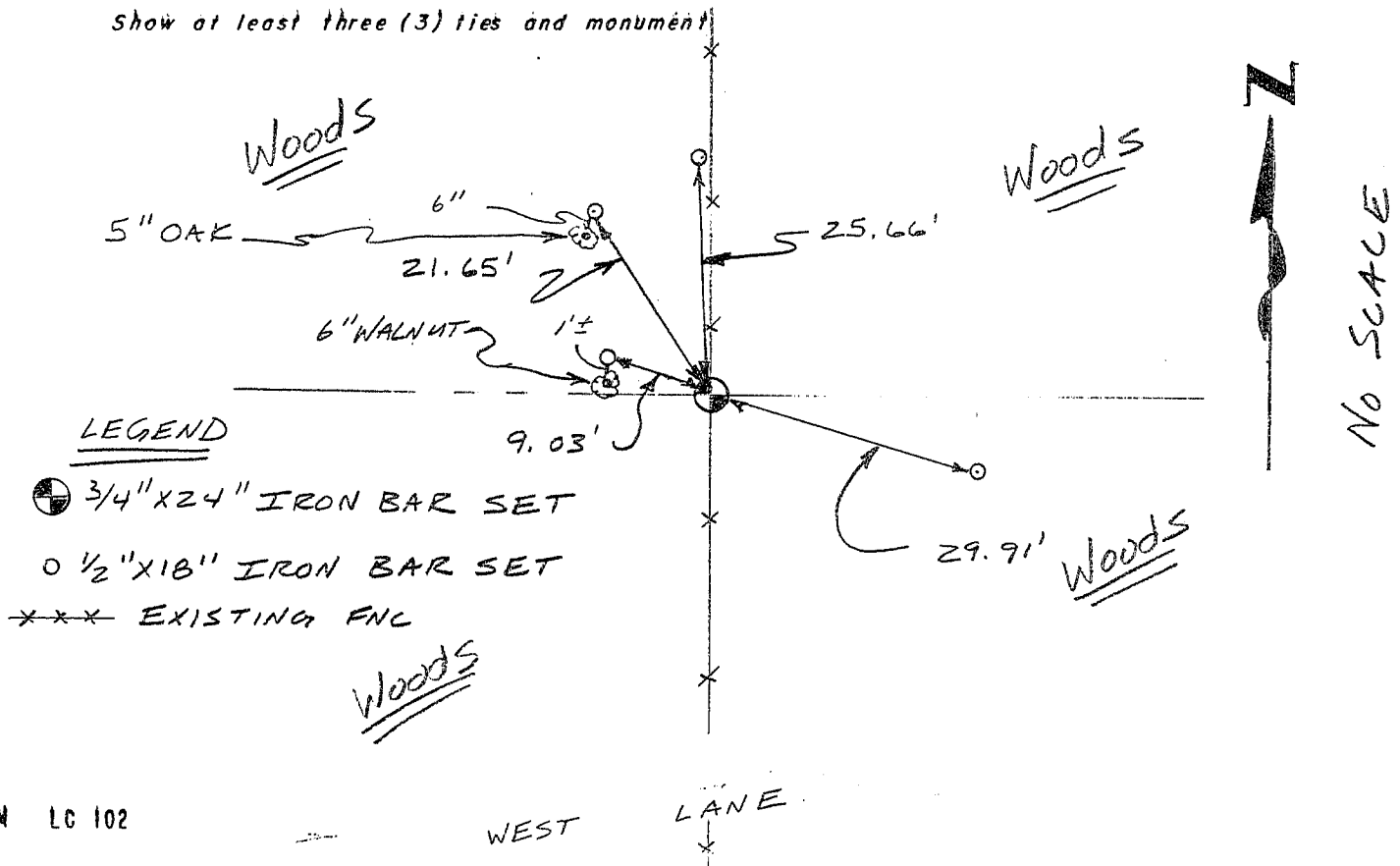
CERTIFIED CORRECT

Randy A. Rust
Registered Land Surveyor

DATE: 8/29/96

TIE SKETCH

Show at least three (3) ties and monument



LEGEND

- ⊕ 3/4" X 24" IRON BAR SET
- 1/2" X 18" IRON BAR SET
- *** EXISTING FNC