

22108
and
22116

Prepare's Name: Kenneth L. Buesing Address: 1212 Locust St. Dubuque, IA Telephone: (563) 556-4389

SLSI 9-94

UNITED STATES PUBLIC LAND SURVEY MONUMENT RECORD

OF

Land Survey Monuments situated in Section 33, Township 2N, Range 2W, of the Fourth Principal Meridian, GRANT County, Wisconsin, Previously recorded in SEE BELOW in County Recorder's Office.
(book, page, document number, etc.)

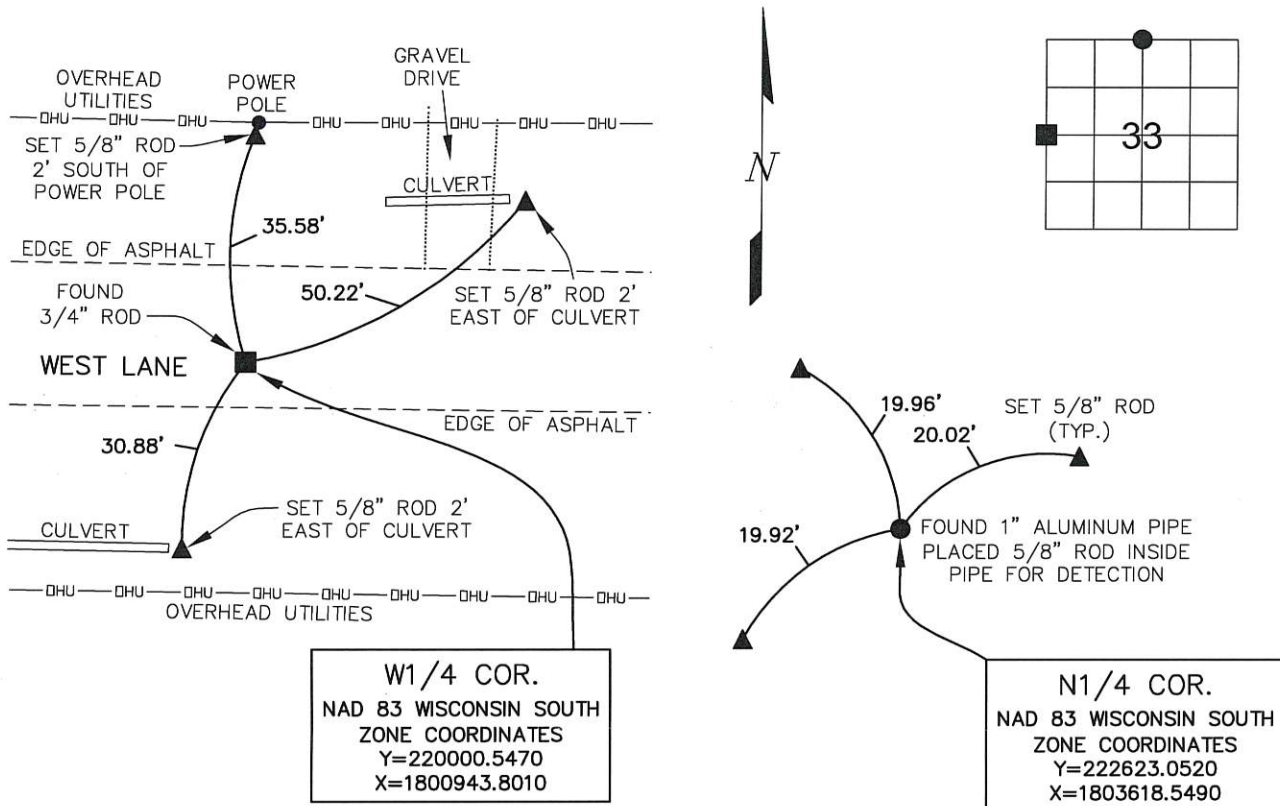
(Show reason for preparing this certificate, the evidence and detailed procedures used in establishing the corner positions and monumentation found or placed.)

Monument Description and Remarks: FOUND 3/4" ROD @ THE W1/4 CORNER. BURIED 1" IN ASPHALT ROAD.

FOUND 1" ALUMINUM PIPE @ THE N1/4 CORNER. PLACED 5/8" ROD INSIDE PIPE FOR DETECTION. BURIED 12".

PLAN - VIEW

(Show a minimum of four reference ties to durable physical objects, relevant monuments and physical conditions that will enable recovery of the corner.)

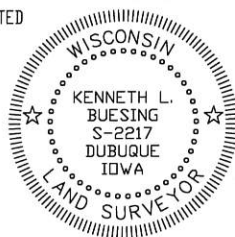


W1/4 COR.
NAD 83 WISCONSIN SOUTH
ZONE COORDINATES
Y=220000.5470
X=1800943.8010

N1/4 COR.
NAD 83 WISCONSIN SOUTH
ZONE COORDINATES
Y=222623.0520
X=1803618.5490

I HEREBY CERTIFY THAT THIS LAND SURVEYING DOCUMENT WAS PREPARED AND THE RELATED SURVEY WORK WAS PERFORMED BY ME OR UNDER MY DIRECT PERSONAL SUPERVISION, THE U.S. PUBLIC LAND SURVEY MONUMENT RECORD IS CORRECT AND COMPLETE TO THE BEST OF MY KNOWLEDGE AND BELIEF AND THAT I AM A DULY LICENSED LAND SURVEYOR UNDER THE LAWS OF THE STATE OF WISCONSIN.

Kenneth L. Buesing
KENNETH L. BUESING (DATE) 7, Nov. 2017
LICENSE NUMBER S-2217
MY LICENSE RENEWAL DATE IS JANUARY 31, 2018



Corners	List Corners to be Indexed	Section	Twp	Range
W1/4 COR.	33	2N	2W	
N1/4 COR.	33	2N	2W	

<p>BUESING ASSOCIATES INC. ENGINEERS AND SURVEYORS 1212 LOCUST ST, DUBUQUE, IA (563) 556-4389</p>	MONUMENT RECORD		
	COUNTY: <u>GRANT</u>	TOWNSHIP: <u>PARIS</u>	
DATE PLOTTED: <u>11-06-17</u>	FIELD BOOK # .	DRAWING	
DATE REVISED:	PAGE # SHOT IN	# <u>17217-01</u>	

GRANT COUNTY

REC'D MAR 8 1996

Survey Monument Record

TYPE OF MONUMENT COUNTY ALUMINUM MON.

STATE PLANE COORDINATES: N _____
E _____

ELEVATION — M.S.L. DATUM: _____

THETA ANGLE: _____

FIELD BOOK: 94-07

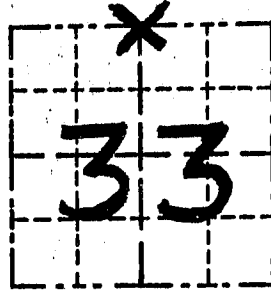
PAGE 30

CORNER NO. 108

SECTION 33

TOWN 2 N

RANGE 2 W



LOCATION
(Indicated by "X")

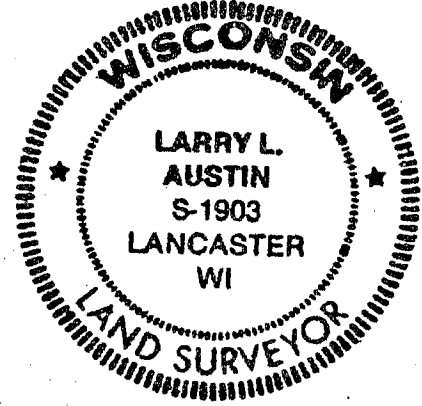
BASIS FOR MONUMENT LOCATION

(Use reverse side if necessary)

Show info such as: History of corner, with reference to Vol. and pg., dates, surveyor; exact description of monument replaced; if location computed, by taped or EDM traverse; landowner, remarks, etc.

SEAL:

CORNER WAS SET 1833 BY LUCIUS LYON
NO RECORD OF CORNER FOUND SINCE
ORIGINAL SURVEYS; I ACCEPTED E-W
FENCE FOR N-S LOCATION & SET EW
LOCATION AT CENTER OF BRACE POSTS
GOING BOTH E & W. THIS LOCATION
VERIFIED BY EDM TRAVERSE OF THE
AREA.



CERTIFIED CORRECT

Larry L. Austin
Registered Land Surveyor

DATE: 4/10/95

TIE SKETCH

Show at least three (3) ties and monument

LEGEND

- ⊕ GRANT COUNTY ALUMINUM MONUMENT SET
- 1" x 12" IRON PIPE SET-TIES

