

U.S. PUBLIC LAND SURVEY MONUMENT RECORD - GRANT COUNTY, WI

Section 34, Town 2 North Range 2 West, Town of Paris (a)

NOTE: This form is intended and designed to fulfill all requirements of the Wisconsin Administrative Code Chapter A-E 7.08, U.S. Public Land Survey Monument Record (3) (a) (b) (c) (d) (e) (f) (g) (h) (i).

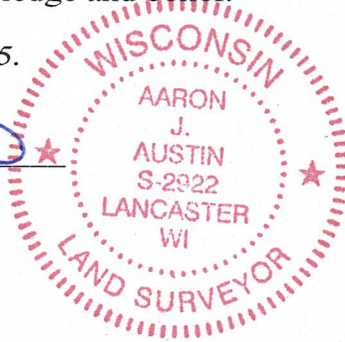
CERTIFICATE: (i)

I, Aaron J. Austin, Wisconsin Professional Land Surveyor, do hereby certify that the corner location on this record was determined by me and/or under my direct supervision and that this U.S. Public Land Survey Monument Record is correct and complete to the best of my knowledge and belief.

Dated this 30th day of May, 2025.

Aaron J. Austin

Aaron J. Austin, S-2922



⊕ = CORNER LOCATION

Grant County Coordinates:
NAD 83 (2011)
Northing: 436,658.18
Easting: 848,137.62

HISTORY OF CORNER ESTABLISHMENT:

Original corner was set in 1833 by Lucius Lyon.
Larry Austin set an Alumium Monument and prepared a Survey Monument Record dated 4-10-1995.

DESCRIPTION OF CORNER EVIDENCE FOUND: (b) (f) (g) (h)

I found the Alumium Monument and one witness corner Larry set. I set three witness corners after I verified the Monument's location with G.P.S. and E.D.M. methods.

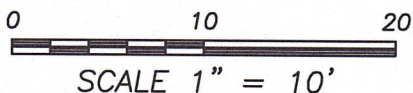
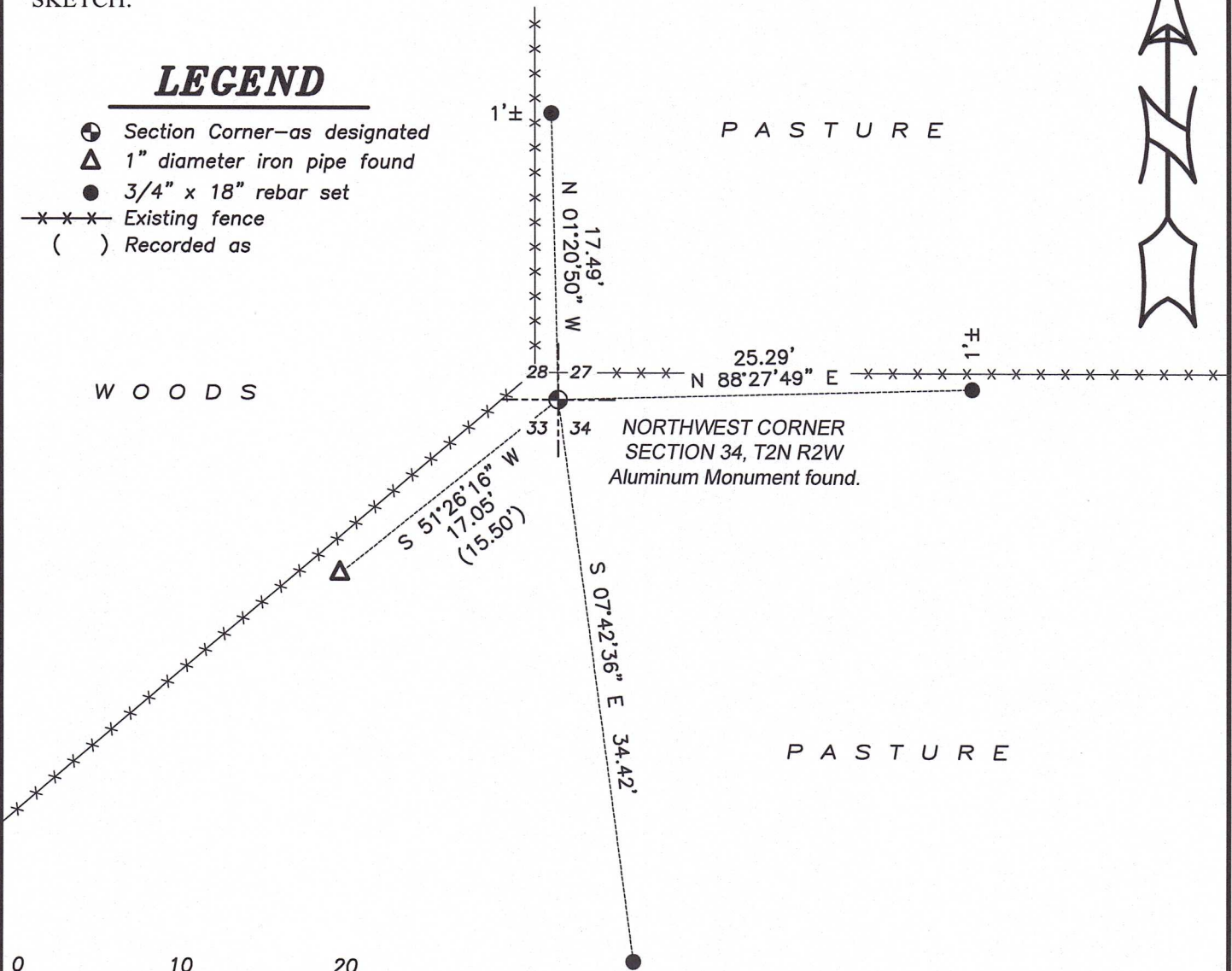
DESCRIPTION OF CORNER AND WITNESS MONUMENTS: references and accessories used to perpetuate the original or re-established location of this corner. (c) (d) (e)

Witnesses to corner location Shane Austin.
Drawn by: Owen Austin.

SKETCH:

LEGEND

- ⊕ Section Corner—as designated
- △ 1" diameter iron pipe found
- 3/4" x 18" rebar set
- x-x-x- Existing fence
- () Recorded as



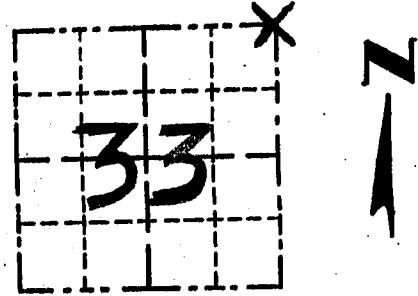
GRANT COUNTY

REC'D MAR 8 1996

Survey Monument Record

CORNER NO. 107
 SECTION 33
 TOWN 2N
 RANGE 2W

TYPE OF MONUMENT COUNTY ALUMINUM MON.
 STATE PLANE COORDINATES: N _____
 E _____
 ELEVATION — M.S.L. DATUM: _____
 THETA ANGLE: _____
 FIELD BOOK: 9407
 PAGE 30



LOCATION
(Indicated by "X")

BASIS FOR MONUMENT LOCATION

(Use reverse side if necessary)

Show info such as: History of corner, with reference to Vol. and pg., dates, surveyor; exact description of monument replaced; if location computed, by taped or EDM traverse; landowner, remarks, etc.

SEAL:

CORNER ORIGINALLY SET IN 1833
 BY LUCIUS LYON; NO RECORD OF CORNER
 FOUND SINCE ORIGINAL SURVEY;
 I SET THE CORNER AT OCCUPIED
 LOCATION AFTER VERIFICATION BY
 EDM TRAVERSE OF THE AREA



CERTIFIED CORRECT

Larry L. Austin
 Registered Land Surveyor
 DATE: 4/10/95

TIE SKETCH

Show at least three (3) ties and monument

LEGEND

- ⊕ ALUMINUM MONUMENT = CORNER
- 1" x 12" IRON PIPES = TIES
- *** EXISTING FENCE

