

22101

# U.S. PUBLIC LAND SURVEY MONUMENT RECORD - GRANT COUNTY, WI

Section 36, Town 2 North Range 2 West, Town of Paris (a)

NOTE: This form is intended and designed to fulfill all requirements of the Wisconsin Administrative Code Chapter A-E 7.08, U.S. Public Land Survey Monument Record (3) (a) (b) (c) (d) (e) (f) (g) (h) (i).

### CERTIFICATE: (i)

I, Aaron J. Austin, Wisconsin Professional Land Surveyor, do hereby certify that the corner location on this record was determined by me and/or under my direct supervision and that this U.S. Public Land Survey Monument Record is correct and complete to the best of my knowledge and belief.

Dated this 13th day of June, 2025.

*Aaron J. Austin*

Aaron J. Austin, PLS-2922



● = CORNER LOCATION

Grant County Coordinates:  
NAD 83 (2011)  
Northing: 436,755.44  
Easting: 863,977.05

### HISTORY OF CORNER ESTABLISHMENT:

Original corner was set in 1832 by Lucius Lyon.  
Larry Austin set a 3/4" Rebar and prepared a Survey Monument Record dated 11-16-1997.  
Stanley King set a D.O.T. Aluminum Monument and prepared a Survey Monument Record dated 1-4-2002.

### DESCRIPTION OF CORNER EVIDENCE FOUND: (b) (f) (g) (h)

I found and measured a D.O.T. Aluminum Monument prior to the road construction of County Highway "HH". After the road construction I found the D.O.T. Aluminum Monument and four witness corners undisturbed. I verified the Monument's location with G.P.S. and E.D.M. methods.

### DESCRIPTION OF CORNER AND WITNESS MONUMENTS, references and accessories used to perpetuate the original or re-established location of this corner. (c) (d) (e)

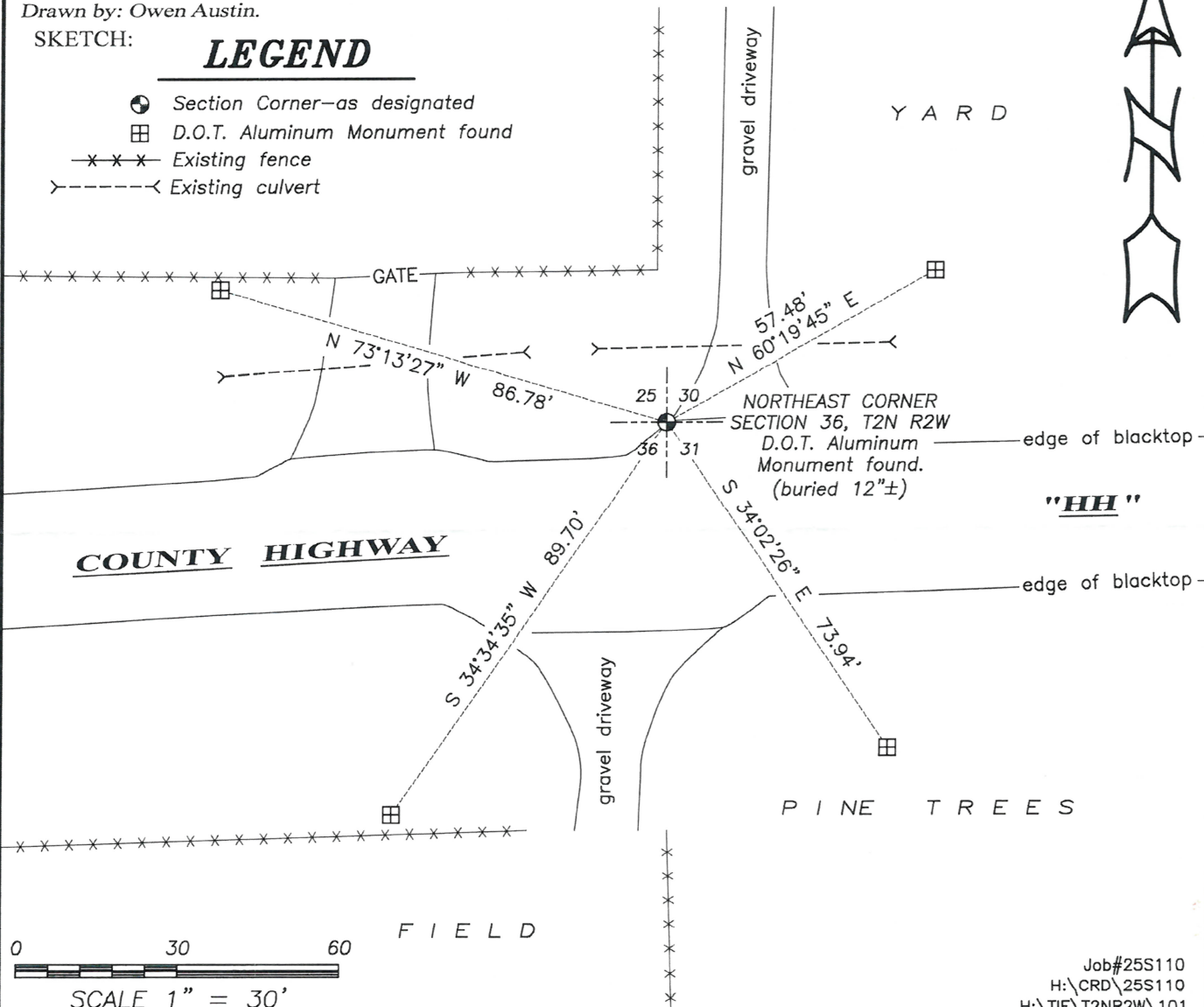
Witnesses to corner location Shane Austin.

Drawn by: Owen Austin.

SKETCH:

## LEGEND

- Section Corner—as designated
- ⊞ D.O.T. Aluminum Monument found
- x-x-x- Existing fence
- >-----< Existing culvert



# CERTIFIED LAND CORNER

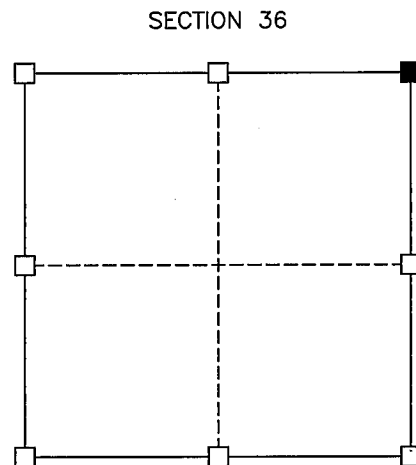
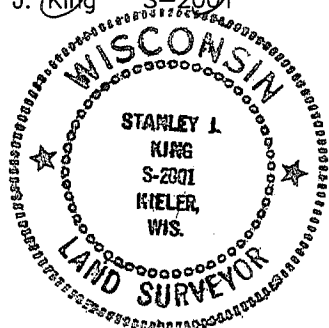
## STATE OF WISCONSIN COUNTY OF GRANT

**CERTIFICATE**

I, Stanley J. King, do hereby certify that the corner location of this record was determined by me and/or under my direct supervision and that this U.S. public land survey monument record is correct and complete to the best of my knowledge and belief.

Dated this 4th day of January, 2002

*Stanley J. King*  
 \_\_\_\_\_  
 Stanley J. King S-2001



■ = Corner Location  
 T2N R2W  
 Town of: PARIS

Seal:

History of original corner establishment:

Original corner was set in 1833 by Lucius Lyon.  
 Corner was reset in 1997 by Larry Austin.

Description of corner evidence found:

Corner was destroyed during re-construction of CTH "HH" in 2001.  
 Prior to being destroyed, corner was tied off, and replaced to the exact location after construction.

Description of corner and witness monuments, references, and accessories used to perpetuate the original or re-established location of this corner:

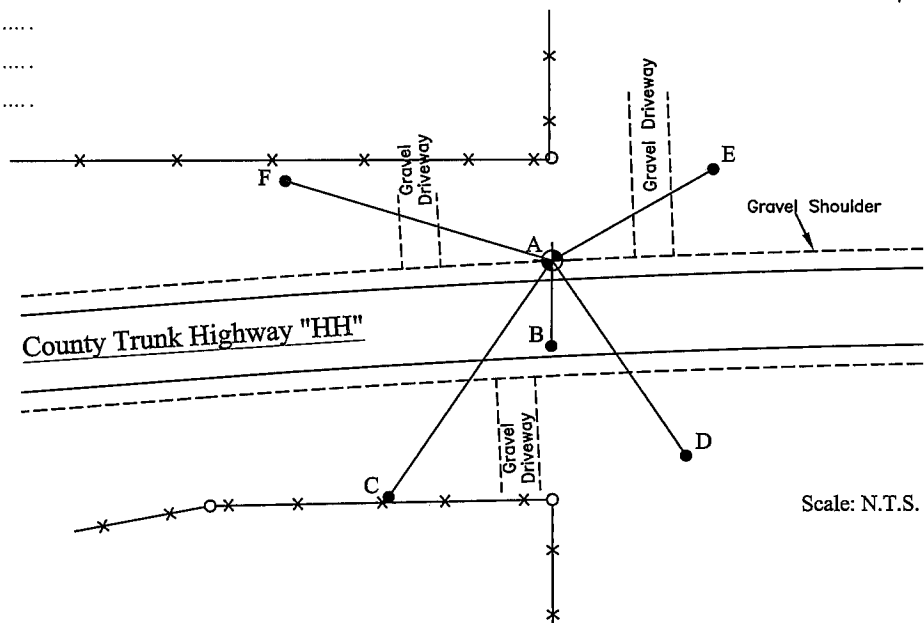
Witnesses to corner location:

Stanley J. King .....  
 Daniel J. Dreessens .....  
 .....  
 .....

**LEGEND**

- = SECTION CORNER (WisDOT ALUM. MONUMENT)
- = TIE BAR (WisDOT ALUM. MONUMENT)
- = WisDOT R/W PIN (3/4" BAR FOUND)

- (A-B) = S 00°36'38" W 26.80'
- (A-C) = S 34°31'24" W 89.70'
- (A-D) = S 34°03'54" E 73.94'
- (A-E) = N 60°22'23" E 57.48'
- (A-F) = N 73°13'09" W 86.78'



Scale: N.T.S.



**BLACKHAWK**  
**ENGINEERING, Ltd.**

Civil & Municipal Engineers and Building Design  
 2 INSIGHT DRIVE OFFICE PHONE: (608) 348-4433  
 PLATTEVILLE, WISCONSIN FAX: (608) 348-4449

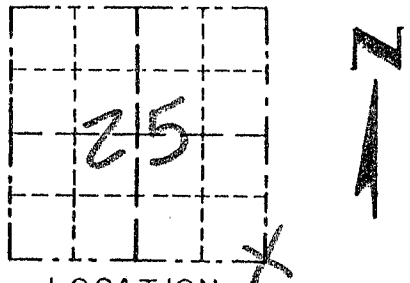
SURVEY CREW: DJD, SJK  
 DRAWN BY: DJD  
 DATE: JAN. 4, 2002  
 FILE: f:\acad12\2001\01-018\tiesheetnecor36.dwg

Survey Monument Record

TYPE OF MONUMENT 3/4" X 24" IRON BAR  
SET

CORNER NO. 101  
 SECTION 25  
 TOWN 2N  
 RANGE 2W

FIELD BOOK: 97-01  
 PAGE \_\_\_\_\_



LOCATION  
 (Indicated by "X")

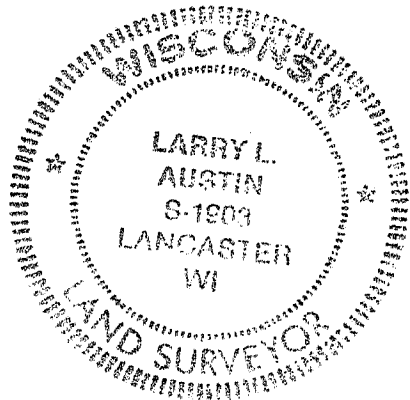
BASIS FOR MONUMENT LOCATION

(Use reverse side if necessary)

Show info such as: History of corner, with reference to Vol. and pg., dates, surveyor; exact description of monument replaced; if location computed, by taped or EDM traverse; landowner, remarks, etc.

CORNER SET IN 1832 BY L. LYON. NO RECORD OF CORNER FOUND SINCE ORIGINAL SURVEYS; CORNER SET AT THE LOCATION SHOWN ON THE C.T.H. "HH" HIGHWAY MAPS (PROJECT 0987 (1)); VERIFIED THIS LOCATION USING EDM METHODS.

SEAL:



CERTIFIED CORRECT

*Larry L. Austin*  
 Registered Land Surveyor

DATE: 11-16-97

TIE SKETCH

Show at least three (3) ties and monument

LEGEND

- ⊕ 3/4" X 24" IRON BAR SET
- 1/2" X 15" IRON BAR SET
- 1" IRON PIPE FOUND

