

U.S. PUBLIC LAND SURVEY MONUMENT RECORD - GRANT COUNTY, WI

Section 25, Town 2 North Range 2 West, Town of Paris (a)

NOTE: This form is intended and designed to fulfill all requirements of the Wisconsin Administrative Code Chapter A-E 7.08, U.S. Public Land Survey Monument Record (3) (a) (b) (c) (d) (e) (f) (g) (h) (i).

CERTIFICATE: (i)

I, Aaron J. Austin, Wisconsin Professional Land Surveyor, do hereby certify that the corner location on this record was determined by me and/or under my direct supervision and that this U.S. Public Land Survey Monument Record is correct and complete to the best of my knowledge and belief.

Dated this 11th day of July, 2020.

Aaron J. Austin (Signature)
Aaron J. Austin, S-2922



⊕ = CORNER LOCATION

Grant County Coordinates:
NAD 83 (2011)
Northing: 439,283.02
Easting: 858,678.32

HISTORY OF CORNER ESTABLISHMENT:

Original corner was set in 1833 by Lucius Lyon.
Larry Austin set a 3/4" Iron bar and prepared a Survey Monument Record dated 11/16/1998.

DESCRIPTION OF CORNER EVIDENCE FOUND: (b) (f) (g) (h)

I found the 3/4" Iron bar Larry set disturbed. I set a 1" x 24" with a Grant County Aluminum Cap from the existing witness corners. I found four witness corners after I verified the Monument's location with G.P.S. and E.D.M. methods.

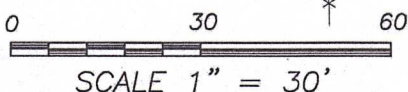
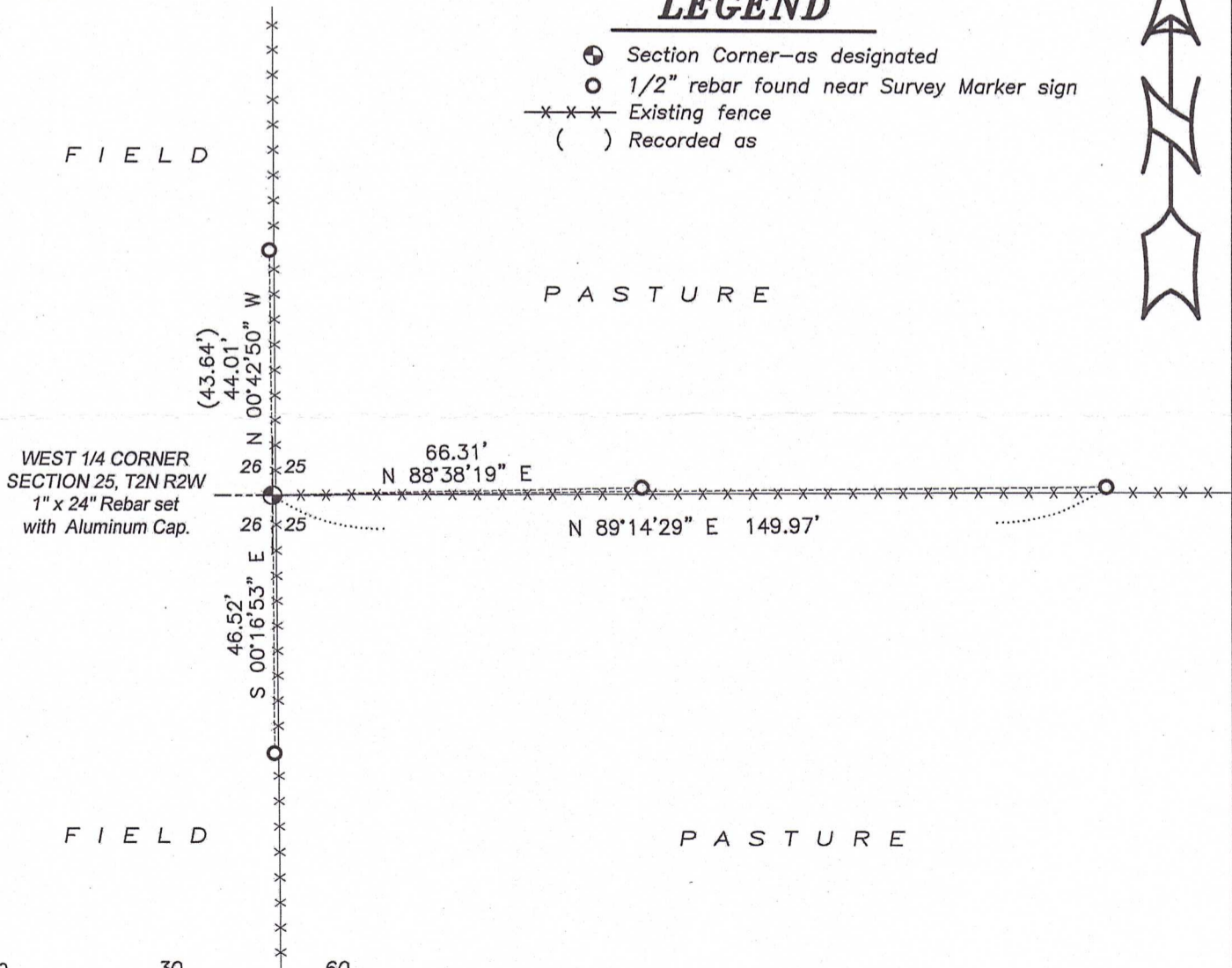
DESCRIPTION OF CORNER AND WITNESS MONUMENTS, references and accessories used to perpetuate the original or re-established location of this corner. (c) (d) (e)

Witnesses to corner location Shane Austin, Owen Austin.
Drawn by Owen Austin

SKETCH:

LEGEND

- ⊕ Section Corner—as designated
○ 1/2" rebar found near Survey Marker sign
-x-x-x Existing fence
() Recorded as



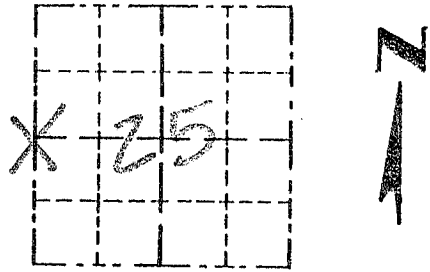
SCALE 1" = 30'

Survey Monument Record

TYPE OF MONUMENT 3/4" X 24" IRON
BAR SET

CORNER NO. 99
 SECTION 25
 TOWN 2N
 RANGE 2W

FIELD BOOK: 97-01
 PAGE _____



LOCATION
 (Indicated by "X")

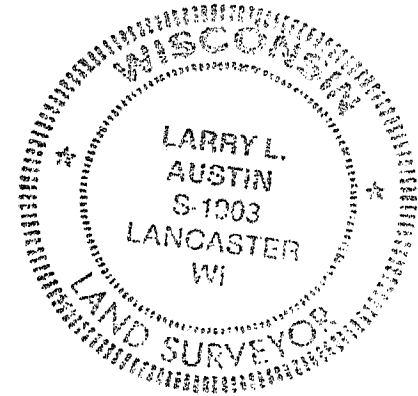
BASIS FOR MONUMENT LOCATION

(Use reverse side if necessary)

Show info such as: History of corner, with reference to Vol. and pg., dates, surveyor; exact description of monument replaced; if location computed, by taped or EDM traverse; landowner, remarks, etc.

CORNER SET IN 1833 BY LUCIUS LYON. IN 1975 HOMER RALPH TIED TO THE CORNER. I FOUND AN EXISTING OCCUPIED FENCE CORNER. ACCEPTED IT AFTER EDM TRAVERSE OF AREA.

SEAL:



CERTIFIED CORRECT

Larry L. Austin
 Registered Land Surveyor

DATE: 11-16-98

TIE SKETCH

Show at least three (3) ties and monument

LEGEND

- 3/4" X 24" IRON BAR SET
- 1/2" X 15" IRON BAR SET
- ** EXISTING FENCE

