

Grant County Certified U.S. Public Land Survey Monument Record

DATUM : NAD83 (2011) WISCORS

GRANT COUNTY COORDINATES

CONTROL IS A COMBINATION OF GPS AND CONVENTIONAL FIELD CONTROL.

NORTH 439271.61

The East quarter corner of Section 27, Town 2 North, Range 2 West ,
Town of Paris, Grant County, Wisconsin.

EAST 853395.15

(A) Identify the corner by reference to the U.S. public land survey system.

WITNESS TO CORNER LOCATION:



(E) The corner was restored through acceptance of
(1) an obliterated evidence location
(2) a found-perpetuated location
(3) lost corner proportionate methods



= Corner monument restored or maintained.

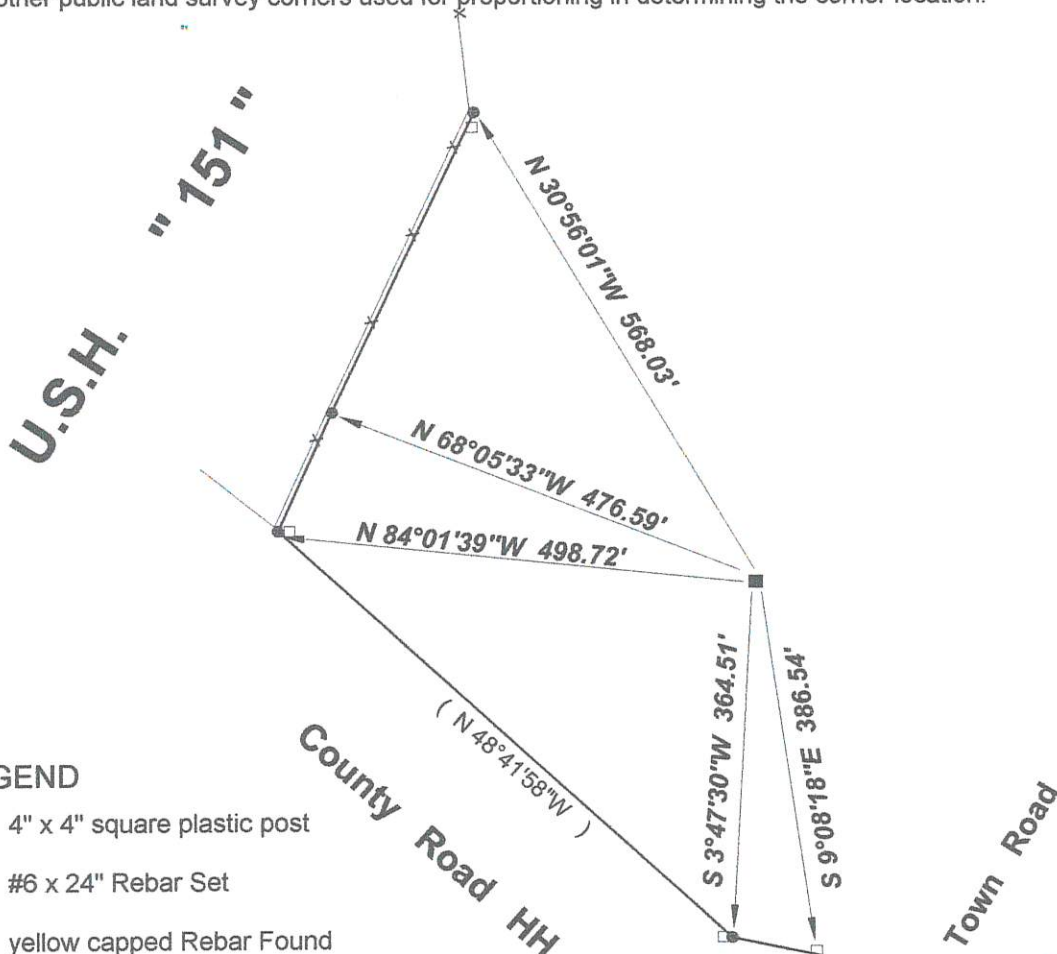
Sec. 27, T 2 N, R 2 W

(B) Describe any record evidence, monument evidence, occupational evidence, testimonial evidence or any other material evidence you considered, and whether the monument was placed or found.

The monument was set according to the ties established on Transportation Project Plat of WIS-DOT project 1209-02-26.

The entire area has been leveled and all ties and previous monuments were obliterated.

(C, D, F, G) Plan view drawing below, provide reference ties to at least 4 witness monuments, or, if the location is within a municipality, to at least 2 witness monuments. Depict the relevant monuments and reference ties in sufficient detail to enable accurate relocation of the corner monument, if disturbed. Indicate North. Describe any material discrepancy between the location of the corner as restored or reestablished and the location of that corner as previously monumented by distance and direction. Show the discrepancy on the plan view and the distances between the corner as previously monumented. If the corner was reestablished through lost corner proportionate methods, show the method, including the directions and distances to other public land survey corners used for proportioning in determining the corner location.



LEGEND


- 4" x 4" square plastic post
- #6 x 24" Rebar Set
- yellow capped Rebar Found

() Recorded As

x—x Fence

Scale : 1" = 200'

(H) I, Bruce D. Bowden do certify that the corner location shown on this record was determined by me or under my direction and control and that this U.S. Public Land Survey Monument Record is correct and complete to the best of my knowledge and belief.


 Signature Date 1/15/17



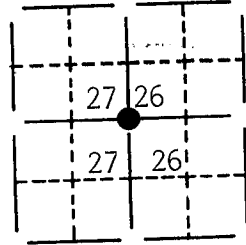
Romportl No. 20202272000
Grant Co. Index No. 98

U. S. PUBLIC LAND SURVEY MONUMENT RECORD FOR GRANT COUNTY, WISCONSIN

Note: This form is intended and designed to fulfill all requirements of Wisconsin Administrative Code, Chapter A-E7.08, U.S. Public Land Survey Monument Record (3)(a)(b)(c)(d)(e)(f)(g)(h)(i). Use additional sheet if necessary.

(a) The section, one quarter corner common to sections 27, 26,
Township(s) 02 N, Range(s) 02 W

State plane coordinates: N 225,166.5489
E 1,843,075.2562

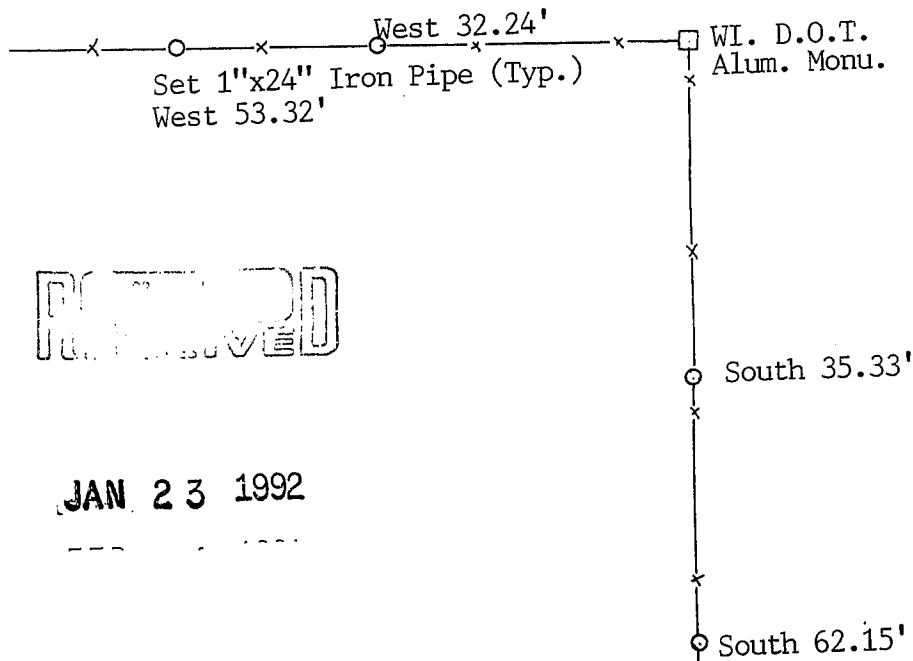


(b)(f)(g)(h) Description of monument found at this corner and if it was accepted, state all evidence (material, testimonial, occupational, plats, records, other monuments) used as a basis for accepting. If not accepted or nothing was found, state evidence used as basis for establishing location and what was set. If reestablished through lost corner proportionate methods, indicate all monuments, distances and directions used.

Found and accepted an 1" O.D. Iron Pipe at the E 1/4 Corner of Sec. 27.
Replaced Iron Pipe with WI. D.O.T. Alum. Monument.

(c)(d)(e) Plan view of corner with ties to at least 4 witness monuments. If in disagreement with previously established corner, show the distances between the two corners and also indicate ties to disputed corner.

NORTH



JAN 23 1992

(i) I certify that the corner location on this record was determined by me or under my direction and control and that this U.S. Public Land Survey Monument Record is correct and complete to the best of my knowledge and belief.

[Signature]
Signature

Oct 30, 1991
Date



Filed for record in Grant County Surveyor's Office on _____

Paris Townships

US. PUBLIC LAND SURVEY MONUMENT RECORD

CORNER DESCRIPTION: E 1/4 CORNER, SECTION 27, T 2 N, R 2 W

STATE PLANE COORDINATES: N _____, E _____

THETA ANGLE: _____

HORIZONTAL DATUM: WISCONSIN STATE PLANE COORDINATE SYSTEM, SOUTH ZONE

EVIDENCE: FOUND IRON PIPE OF RECORD, IN GOOD CONDITION.

MONUMENT: FOUND , PLACED

METHOD OF RESTORATION (RE-ESTABLISHMENT):

ACCEPTED EXISTING MONUMENT

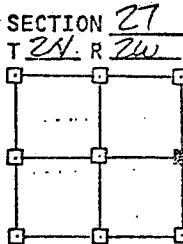
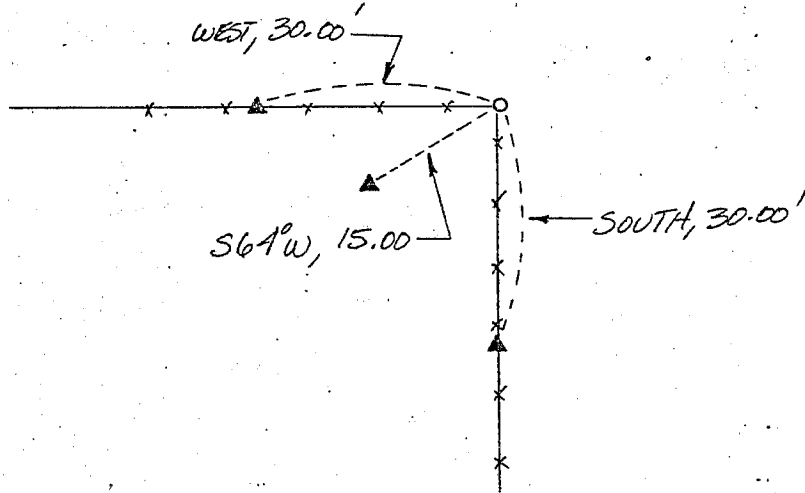
N , E ACCEPTED OCCUPATION

N , E LOST CORNER PROPORTIONATE METHODS

DATE CORNER SET: NOVEMBER, 1922

LEGEND

- ▲ SET #6 REBAR, 1.13 LBS. PER LINEAL FT. MIN. WT.
- SET 1" X 24" IRON PIPE, 1.13 LBS. PER LINEAL FT. MIN. WT.
- SET 2" X 30" IRON PIPE, 3.65 LBS. PER LINEAL FT. MIN. WT.
- FOUND 1" IRON PIPE
- FOUND 2" IRON PIPE
- FOUND R/R SPIKE
- SET R/R SPIKE
- ⊙ GOVERNMENT CORNER
- EXISTING FENCE



NOT TO SCALE THIS CONFORMS TO WISCONSIN ADMINISTRATIVE CODE A-E 5.02

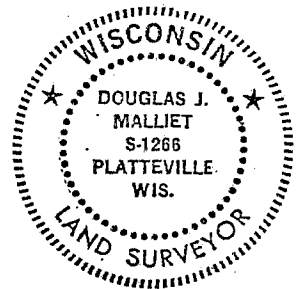
SURVEYOR'S AFFIDAVIT:

STATE OF WISCONSIN)
GRANT COUNTY) SS

I hereby certify that I, DOUGLAS J. MALLIET, have complied with the Wisconsin State Statutes, Statutes of the United States, and the rules and regulations made by the Secretary of the Interior in the location of the corner shown above.

DATE OF SURVEY: 3-5-83

Douglas J. Malliet
REGISTERED LAND SURVEYOR
0266



D. F. BURBACH MUNICIPAL & CIVIL ENGINEERS

410 NORTH SECOND STREET • PLATTEVILLE, WISCONSIN 53818 • (608) 348-3262

MAY 2 1983

1983