

U.S. PUBLIC LAND SURVEY MONUMENT RECORD - GRANT COUNTY, WI

Section 30, Town 2 North Range 2 West, Town of Paris (a)

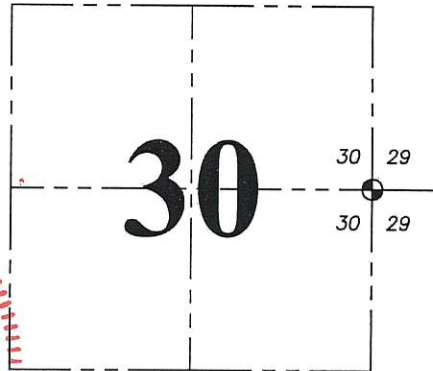
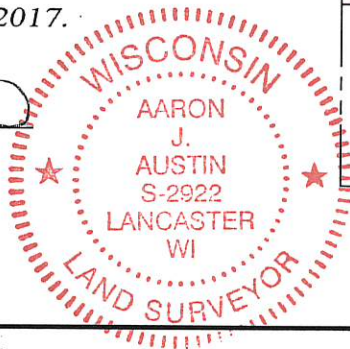
NOTE: This form is intended and designed to fulfill all requirements of the Wisconsin Administrative Code Chapter A-E 7.08, U.S. Public Land Survey Monument Record (3) (a) (b) (c) (d) (e) (f) (g) (h) (i).

CERTIFICATE: (i)

I, Aaron J. Austin, Wisconsin Professional Land Surveyor, do hereby certify that the corner location on this record was determined by me and/or under my direct supervision and that this U.S. Public Land Survey Monument Record is correct and complete to the best of my knowledge and belief.

Dated this 11th day of December, 2017.

Aaron J. Austin
Aaron J. Austin, S-2922



⊕ = CORNER LOCATION

Grant County Coordinates:
NAD 83 (2011)
Northing: 439,237.17
Easting: 837,520.08

HISTORY OF CORNER ESTABLISHMENT:

Original corner was set by Lucius Lyon in 1833.
Wiltse tied to the corner in 1842 on a Survey filed in Book A, Page 140.
David Davis noted on a Survey dated 2-7-1980 filed in Book G, Page 76 that he found a Stone at the corner.
Larry Austin noted on C.S.M. No. 1178 that he found a 3/4" rebar at the corner.
Larry Austin noted on a Survey dated 9-23-2005 filed in Book 18, Page 10 that he found a 3/4" rebar at the corner.
Larry Austin noted on a Survey dated 3-1-2007 filed in Book 20, Page 85 that he found a 3/4" rebar at the corner.
Larry Austin noted on a Survey dated 4-13-2007 filed in Book 21, Page 25 that he found a 3/4" rebar at the corner.
Larry Austin noted on a Survey dated 6-23-2010 filed in Book 27, Page 96 that he found a 3/4" rebar at the corner.
Aaron Austin noted on a Survey dated 5-18-2011 filed in Book 29, Page 58 that I found a 3/4" rebar at the corner.
Aaron Austin noted on a Survey dated 5-23-2013 filed in Book 33, Page 87 that I found a 3/4" rebar at the corner.

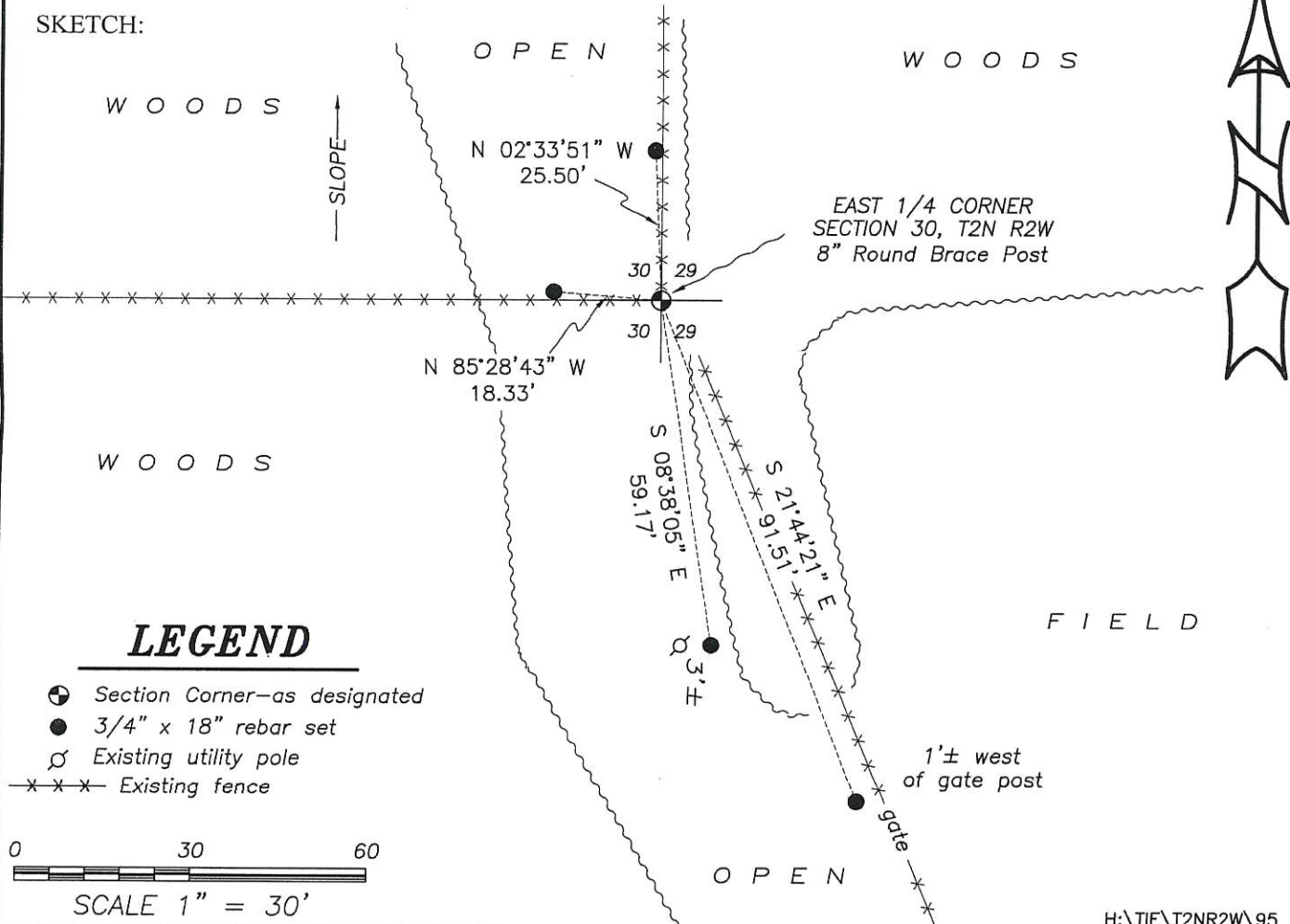
DESCRIPTION OF CORNER EVIDENCE FOUND: (b) (f) (g) (h)

No Survey Monument Record was found for this corner. I did find a 3/4" rebar next to a newer 8" wood round corner post which appeared to be the corner as referenced in the above mentioned surveys. After checking into surrounding section corners, I determined that the corner post was set in place of the rebar and the rebar was placed against the corner post without benefit of survey. I set four witness corners after I verified the corner post's location with G.P.S. and E.D.M. methods.

DESCRIPTION OF CORNER AND WITNESS MONUMENTS: references and accessories used to perpetuate the original or re-established location of this corner. (c) (d) (e)

Witnesses to corner location Shane Austin. Drawn by Owen Austin.

SKETCH:



LEGEND

- ⊕ Section Corner—as designated
- 3/4" x 18" rebar set
- ⊕ Existing utility pole
- x-x-x- Existing fence

