

SECTION CORNER TIE SHEET

To the SW corner of Section 19, Town 2 North, Range 2 West, Paris Township, Grant County, Wisconsin.

I, Terrance L. Genske, hereby certify that I have complied with Wisconsin Statutes, Statutes of the United States, and the rules and regulations made by the Secretary of the Interior in the location of the corner shown below.

Terrance L. Genske

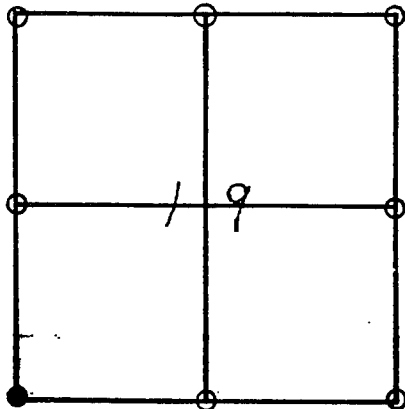
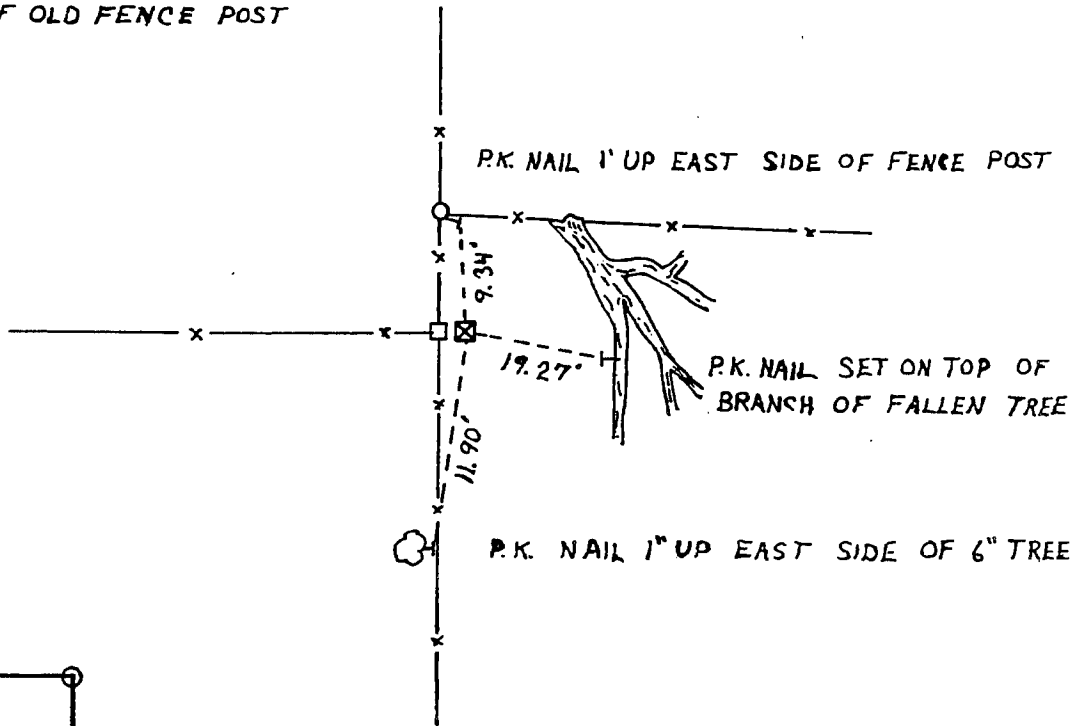
 Terrance L. Genske
 6/18/80

Description of Original Monument and Accessories

Wood post set by Lucius Lyon in February, 1832
 White oak 22" S39W 102 links
 White oak 16" N34W 16 links

Monument and Accessories

☒ R.R. SPIKE SET AT BASE
 OF OLD FENCE POST



Description of Corner Evidence

Corner set by existing physical evidence and common report.