

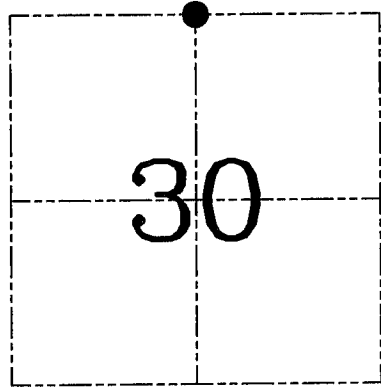
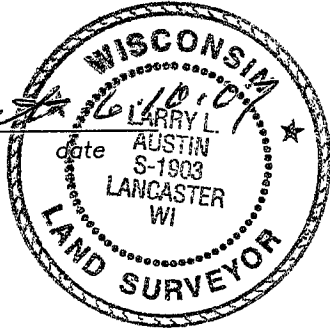
**U.S. PUBLIC LAND SURVEY MONUMENT RECORD – GRANT COUNTY, WI**

**Section 30, Town 2 North Range 2 West, Town of Paris**

CERTIFICATE

I, Larry L. Austin, do hereby certify that the corner location on this record was determined by me and/or under my direct supervision and that this U.S. public land survey monument record is correct and complete to the best of my knowledge and belief.

*Larry L. Austin*  
 Larry L. Austin, S-1903



● = CORNER LOCATION

HISTORY OF CORNER ESTABLISHMENT

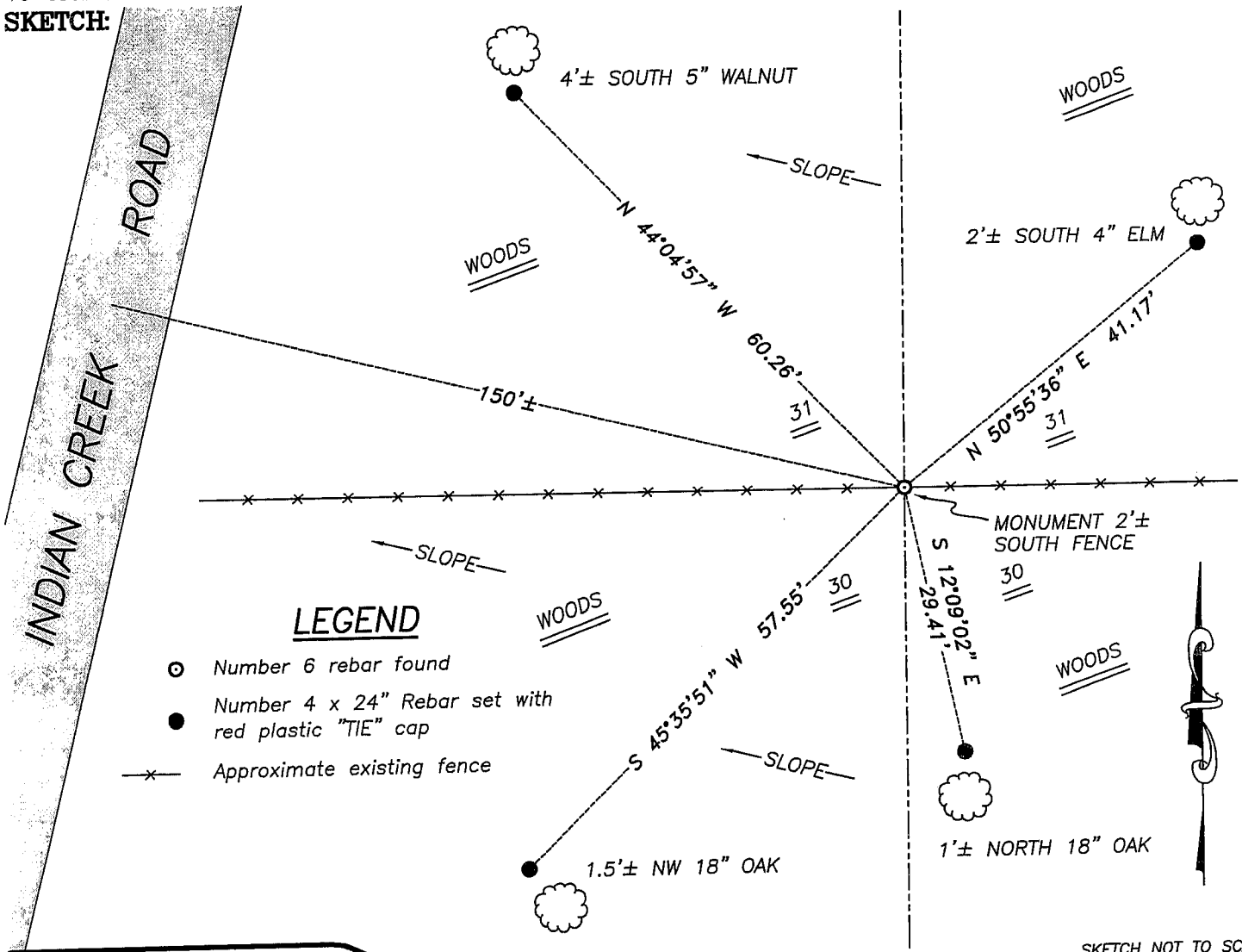
Corner was originally set in 1833 by Lyon. In 1938 the U.S. Army Corps of Engineers tied to the corner. In 2000 Rossman set a No. 6 rebar at this location. No other recent record of the corner was found.

DESCRIPTION OF CORNER EVIDENCE FOUND

I found and accepted the No. 6 rebar after an EDM & GPS traverse of the area.

DESCRIPTION OF CORNER AND WITNESS MONUMENTS, references and accessories used to perpetuate the original or re-established location of this corner. Witnesses to corner location Bobby Sedgwick & Brad Digman & Shane Austin

**SKETCH:**



**LEGEND**

- Number 6 rebar found
- Number 4 x 24" Rebar set with red plastic "TIE" cap
- x— Approximate existing fence

SKETCH NOT TO SCALE



**Austin Engineering LLC**

4211 HWY 81 E, LANCASTER, WI 53813  
 PHONE 608-723-6363 FAX 608-723-6702

JOB NUMBER 07S031  
 FIELDBOOK: TDSR, 2700  
 G:\T2NR2W\23  
 H:\TIE\T2NR2W\92

DRAWN BY: SW AUSTIN  
 APPROVED: LL AUSTIN