

U.S. PUBLIC LAND SURVEY MONUMENT RECORD

Section 26, Town 2 North Range 2 West, Town of Paris, Grant County, Wisconsin

CERTIFICATE

I, Larry L. Austin, do hereby certify that the corner location on this record was determined by me and/or under my direct supervision and that this U.S. public land survey monument record is correct and complete to the best of my knowledge and belief.

Larry L. Austin
Larry L. Austin, S-1903



● = CORNER LOCATION

HISTORY OF CORNER

Corner was originally set in 1833 by Lyon. In 1983 Douglas Malliet set the corner. In 1991 Carl Sandsnes retied the corner. In 1999 I tied the corner. No other record of the corner was found.

CORNER EVIDENCE FOUND

The monument was lost during the construction of USH 151. I reset the corner based on previously established coordinates. Verified this location using EDM & GPS methods.

DESCRIPTION OF CORNER AND WITNESS MONUMENTS, references and accessories used to perpetuate the original or re-established location of this corner. Witnesses to monument location Bobby Sedgwick & Brad Digman & Shane Austin

SKETCH:

"FLEA MARKET" BILLBOARD

1'± SOUTH REFLECTOR POST

LEGEND

- DOT Aluminum Cap found in concrete
- Number 4 x 24" Rebar set with red plastic "TIE" cap
- x- Approximate existing fence

MONUMENT LOCATED 6"± EAST OF THE EDGE OF CONCRETE

GRASS

GRASS MEDIAN

EDGE CONCRETE
EDGE GRAVEL
EDGE GRASS

NOT TO SCALE



Austin Engineering LLC
austinengineeringllc.com

4211 HWY 81 E, LANCASTER, WI 53813
PHONE: 608-723-6363 FAX: 608-723-6702

JOB NUMBER 09S075-WIEDERHOLT
FIELDBOOK: TDSR, 29-10
G:\T2NR2W\26DOT
H:\TIE\T2NR2W\85

DRAWN BY: SW AUSTIN
APPROVED: LL AUSTIN

85

FEB 18 2011

GRANT COUNTY CERTIFIED LAND CORNER

CORNER NUMBER 85

CERTIFICATE:

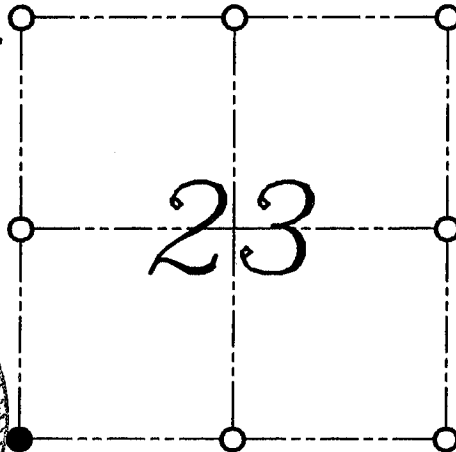
I, LARRY L. AUSTIN, DO HEREBY CERTIFY THAT ON FIRST DAY OF MAY, 1999, I FOUND MONUMENTED EVIDENCE OF THE SOUTHWEST CORNER OF SECTION 23, TOWN 2 NORTH, RANGE 2 WEST OF THE FOURTH PRINCIPAL MERIDIAN, AND I RE-ESTABLISHED SAID CORNER ACCORDING TO THE WISCONSIN STATUTES AS SHOWN AND DESCRIBED HEREON.

DATED THIS TWENTY-SECOND DAY OF MAY, 1999

Larry L. Austin
LARRY L. AUSTIN S-1903



SEAL



● = CORNER LOCATION

SOUTHWEST CORNER OF
SECTION 23, T 2 N R 2 W
TOWN OF PARIS

HISTORY OF ORIGINAL CORNER ESTABLISHMENT:

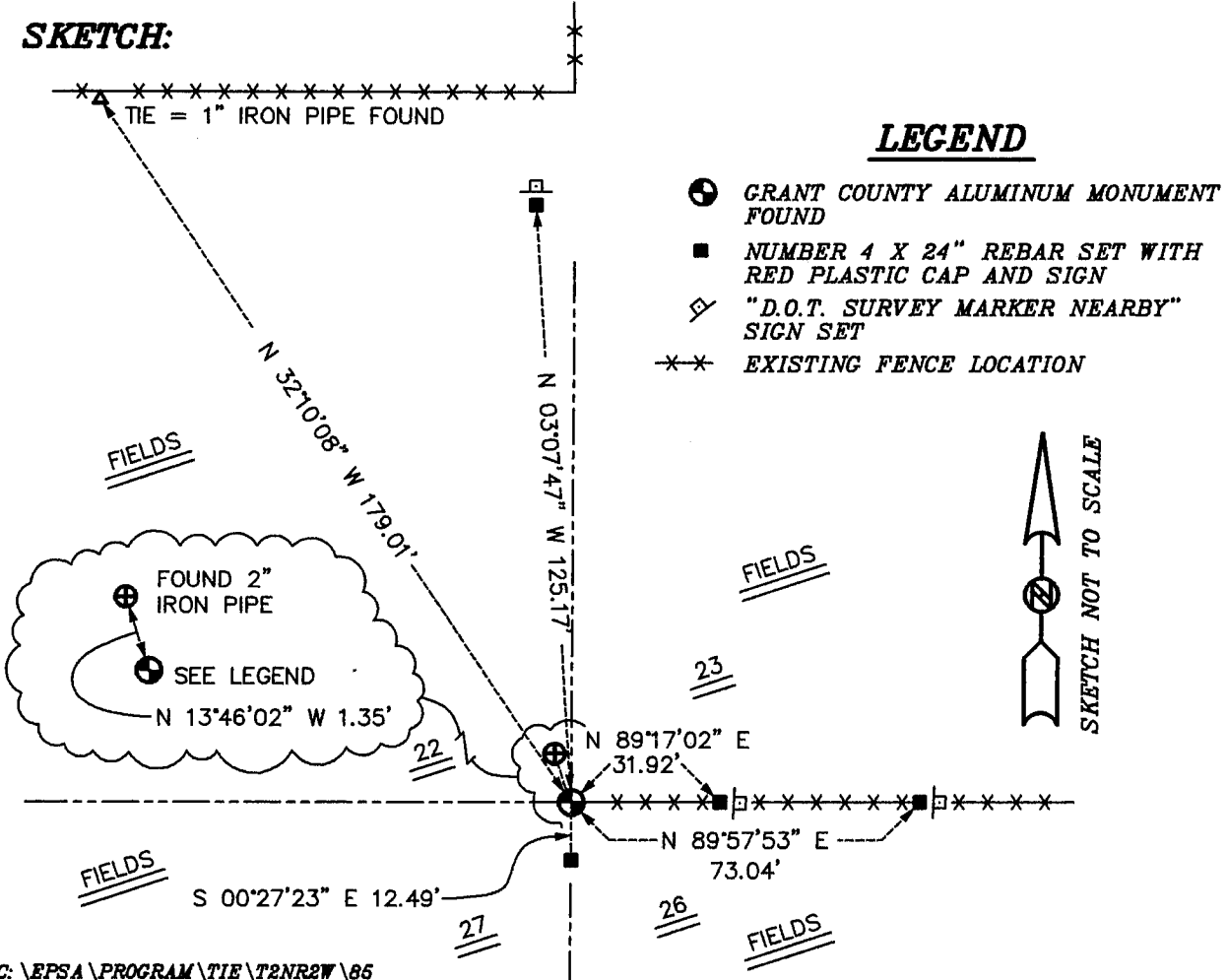
CORNER WAS SET IN 1833 BY LUCIUS LYON. IN 1983 DOUGLAS MALLIET SET THE CORNER. IN 1991 CARL SANDSNES RETIED THE CORNER.

DESCRIPTION OF CORNER EVIDENCE FOUND:

I ACCEPTED THE MONUMENT SET BY MALLIET AND RETIED IT SINCE SOME OF THE TIES WERE LOST. VERIFIED THIS LOCATION USING E.D.M. AND G.P.S. METHODS.

DESCRIPTION OF CORNER AND WITNESS MONUMENTS, REFERENCES AND ACCESSORIES USED TO PERPETUATE THE ORIGINAL OR RE-ESTABLISHED LOCATION OF THIS CORNER:
WITNESS TO THE CORNER LOCATION: BOBBY SEDGWICK ; SHELBY BLINDERT

SKETCH:



Panic Township

US. PUBLIC LAND SURVEY MONUMENT RECORD

CORNER DESCRIPTION: NE CORNER, SECTION 27, T 2N, R 2W

STATE PLANE COORDINATES: N _____, E _____

THETA ANGLE: _____

HORIZONTAL DATUM: WISCONSIN STATE PLANE COORDINATE SYSTEM, SOUTH ZONE

EVIDENCE: FOUND EXISTING STONE MONUMENT (9" X 4" X 24") WITH FLAT ROCK SO BASE OF STONE ORIENTED IN THE CARDINAL DIRECTIONS.

MONUMENT: FOUND , PLACED

METHOD OF RESTORATION (RE-ESTABLISHMENT):

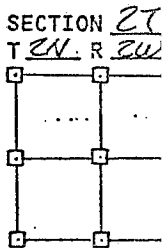
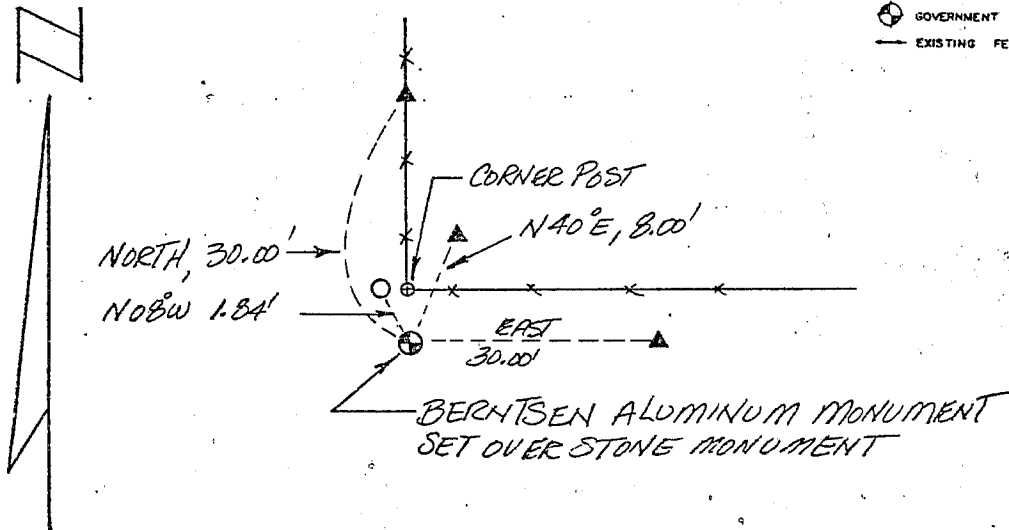
ACCEPTED EXISTING MONUMENT

N , E ACCEPTED OCCUPATION

N , E LOST CORNER PROPORTIONATE METHODS

DATE CORNER SET: NOVEMBER, 1982

- LEGEND**
- A SET #6 REBAR, 1.13 LBS PER LINEAL FT. MIN. WT.
 - SET 1" X 24" IRON PIPE, 1.13 LBS. PER LINEAL FT. MIN. WT.
 - SET 2" X 30" IRON PIPE, 3.65 LBS. PER LINEAL FT. MIN. WT.
 - FOUND 1" IRON PIPE
 - FOUND 2" IRON PIPE
 - FOUND R/R SPIKE
 - SET R/R SPIKE
 - ⊙ GOVERNMENT CORNER
 - EXISTING FENCE



NOT TO SCALE THIS CONFORMS TO WISCONSIN ADMINISTRATIVE CODE A-F 5.02

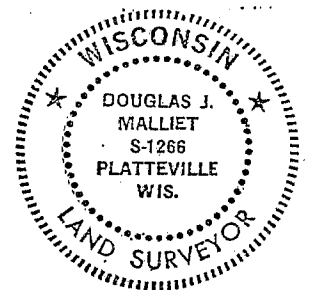
SURVEYOR'S AFFIDAVIT:

STATE OF WISCONSIN)
GRANT COUNTY) S8

I hereby certify that I, DOUGLAS J. MALLIET, have complied with the Wisconsin State Statutes, Statutes of the United States, and the rules and regulations made by the Secretary of the Interior in the location of the corner shown above.

DATE OF SURVEY: 3-5-83

Douglas J. Malliet
REGISTERED LAND SURVEYOR
01266



D. F. BURBACH MUNICIPAL & CIVIL ENGINEERS

410 NORTH SECOND STREET • PLATTEVILLE, WISCONSIN 53818 • (608) 348-3262

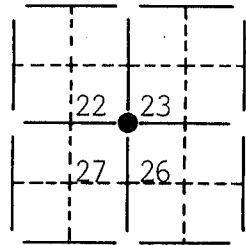
MAY 24 1983

D. F. Burbach

U.S. PUBLIC LAND SURVEY MONUMENT RECORD FOR GRANT COUNTY, WISCONSIN

Note: This form is intended and designed to fulfill all requirements of Wisconsin Administrative Code, Chapter A-E7.08, U.S. Public Land Survey Monument Record (3)(a)(b)(c)(d)(e)(f)(g)(h)(i). Use additional sheet if necessary.

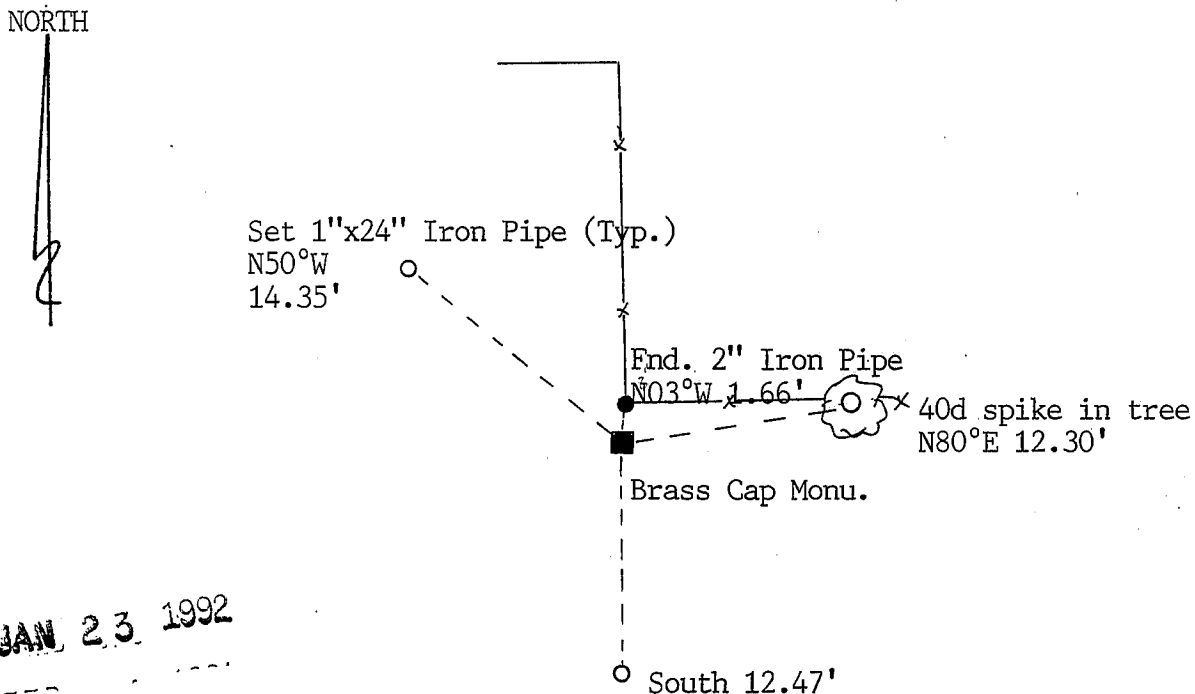
(a) The section, one quarter corner common to sections 22,23,26,27,
Township(s) 02 N, Range(s) 02 W



State plane coordinates: N 227,833.2461
E 1,843,083.0313

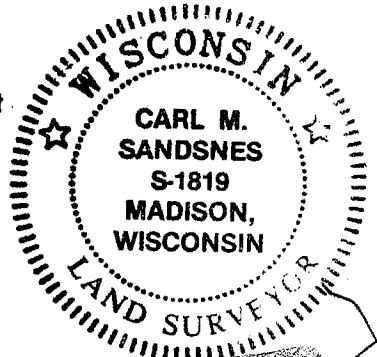
(b)(f)(g)(h) Description of monument found at this corner and if it was accepted, state all evidence (material, testimonial, occupational, plats, records, other monuments) used as a basis for accepting. If not accepted or nothing was found, state evidence used as basis for establishing location and what was set. If reestablished through lost corner proportionate methods, indicate all monuments, distances and directions used.
Found Brass Cap Monument at the SE Corner of Sec. 22

(c)(d)(e) Plan view of corner with ties to at least 4 witness monuments. If in disagreement with previously established corner, show the distances between the two corners and also indicate ties to disputed corner.



(i) I certify that the corner location on this record was determined by me or under my direction and control and that this U.S. Public Land Survey Monument Record is correct and complete to the best of my knowledge and belief.

[Signature]
Signature Oct 30, 1991
Date



Filed for record in Grant County Surveyor's Office on _____