

22078

# U.S. PUBLIC LAND SURVEY MONUMENT RECORD - GRANT COUNTY, WI

Section 22, Town 2 North Range 2 West, Town of Paris (a)

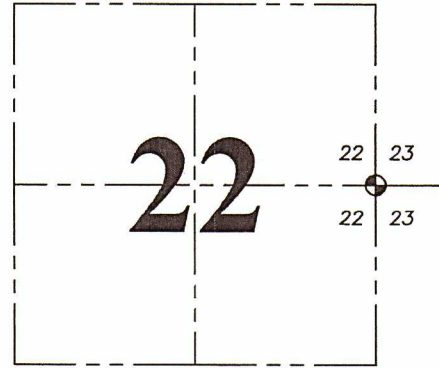
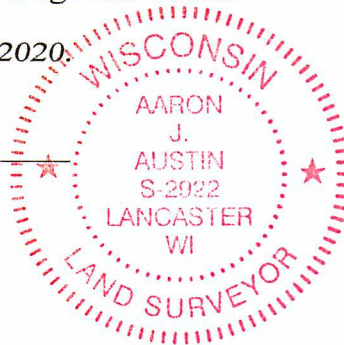
NOTE: This form is intended and designed to fulfill all requirements of the Wisconsin Administrative Code Chapter A-E 7.08, U.S. Public Land Survey Monument Record (3) (a) (b) (c) (d) (e) (f) (g) (h) (i).

CERTIFICATE: (i)

I, Aaron J. Austin, Wisconsin Professional Land Surveyor, do hereby certify that the corner location on this record was determined by me and/or under my direct supervision and that this U.S. Public Land Survey Monument Record is correct and complete to the best of my knowledge and belief.

Dated this 23rd day of January, 2020.

*Aaron J. Austin*  
Aaron J. Austin, S-2922



⊕ = CORNER LOCATION

Grant County Coordinates:  
NAD 83 (2011)  
Northing: 444,574.98  
Easting: 853,347.74

### HISTORY OF CORNER ESTABLISHMENT:

Original corner was set in 1833 by Lucius Lyon.  
Douglas Malliet set an Aluminum Monument and prepared a Survey Monument Record dated 3/23/1983.  
Larry Austin found the Aluminum Monument and prepared a Survey Monument Record dated 5/22/1999.

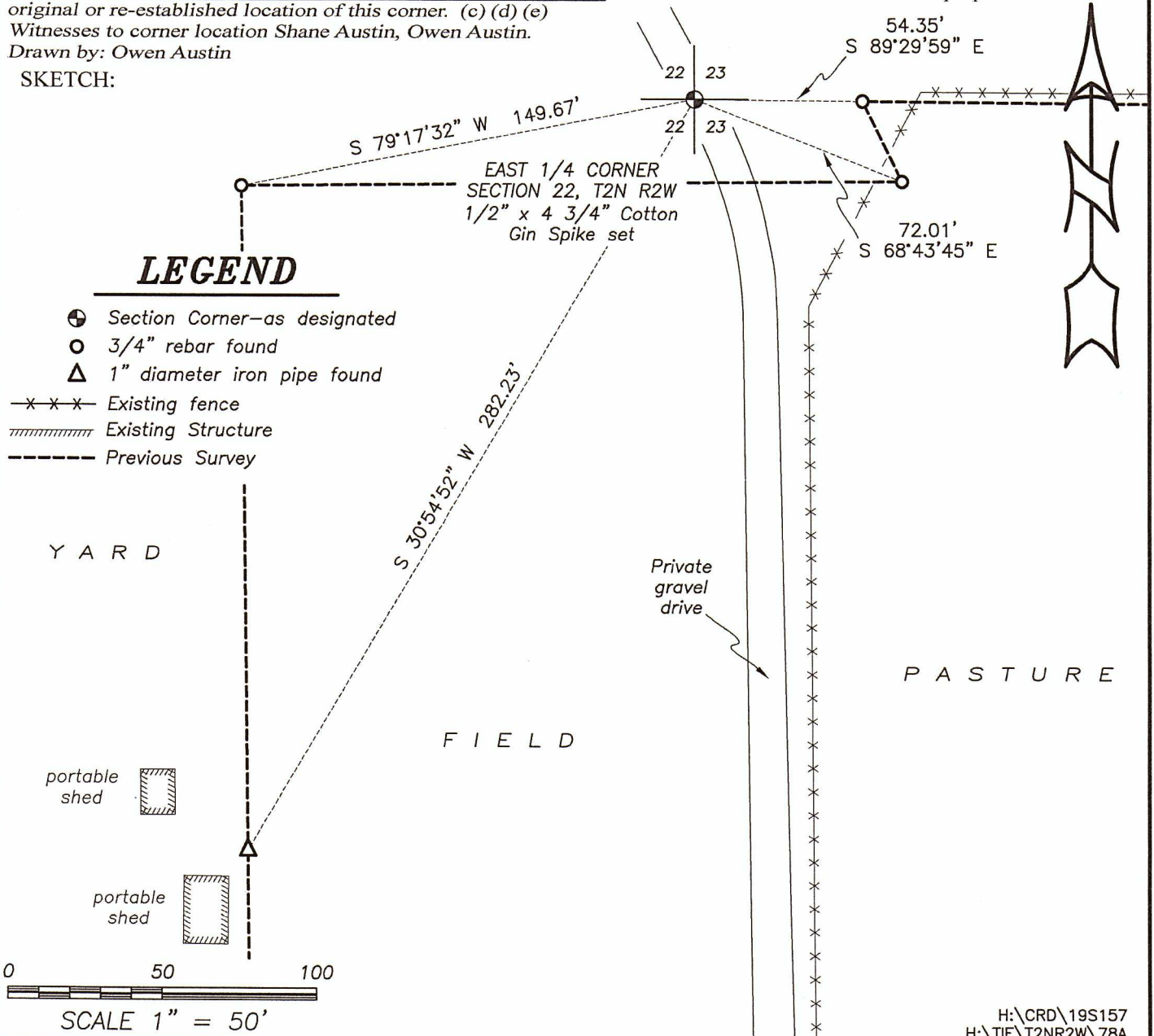
### DESCRIPTION OF CORNER EVIDENCE FOUND: (b) (f) (g) (h)

Corner was reset based upon measurements taken to Monuments from a previous survey by Aaron Austin dated 6/18/2012 filed in Book 31, Page 52. I established four witness corners after I verified the Monument's location with G.P.S. and E.D.M. methods.

### DESCRIPTION OF CORNER AND WITNESS MONUMENTS, references and accessories used to perpetuate the original or re-established location of this corner. (c) (d) (e)

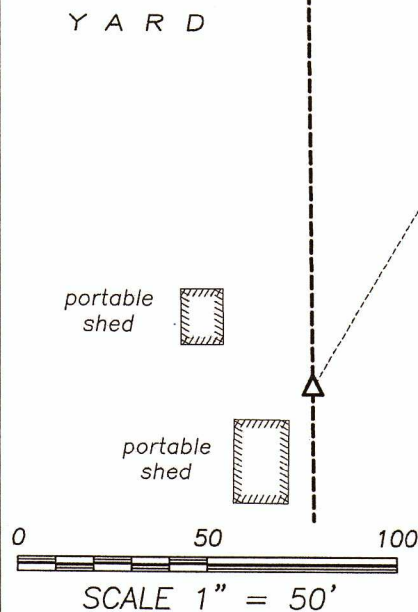
Witnesses to corner location Shane Austin, Owen Austin.  
Drawn by: Owen Austin

SKETCH:



### LEGEND

- ⊕ Section Corner—as designated
- 3/4" rebar found
- △ 1" diameter iron pipe found
- x-x-x- Existing fence
- Existing Structure
- Previous Survey



# GRANT COUNTY CERTIFIED LAND CORNER

CORNER NUMBER 78

**CERTIFICATE:**

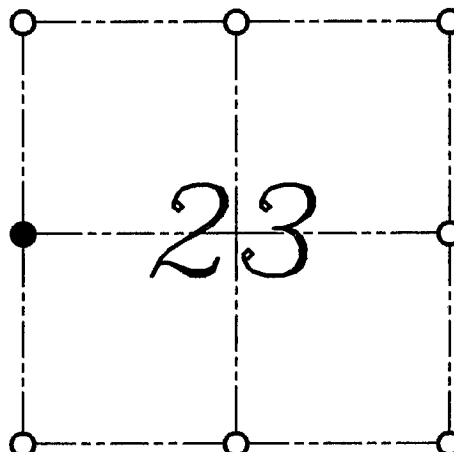
I, LARRY L. AUSTIN, DO HEREBY CERTIFY THAT ON FIRST DAY OF MAY, 1999, I FOUND MONUMENTED EVIDENCE OF THE WEST 1/4 CORNER SECTION 23, TOWN 2 NORTH, RANGE 2 WEST, OF THE FOURTH PRINCIPAL MERIDIAN, AND I RE-ESTABLISHED SAID CORNER ACCORDING TO THE WISCONSIN STATUTES AS SHOWN AND DESCRIBED HEREON.

DATED THIS TWENTY-SECOND DAY OF MAY, 1999

*Larry L. Austin*  
LARRY L. AUSTIN S-1903



SEAL



● = CORNER LOCATION

WEST 1/4 CORNER OF  
SECTION 23, T 2 N R 2 W  
TOWN OF PARIS

**HISTORY OF ORIGINAL CORNER ESTABLISHMENT:**

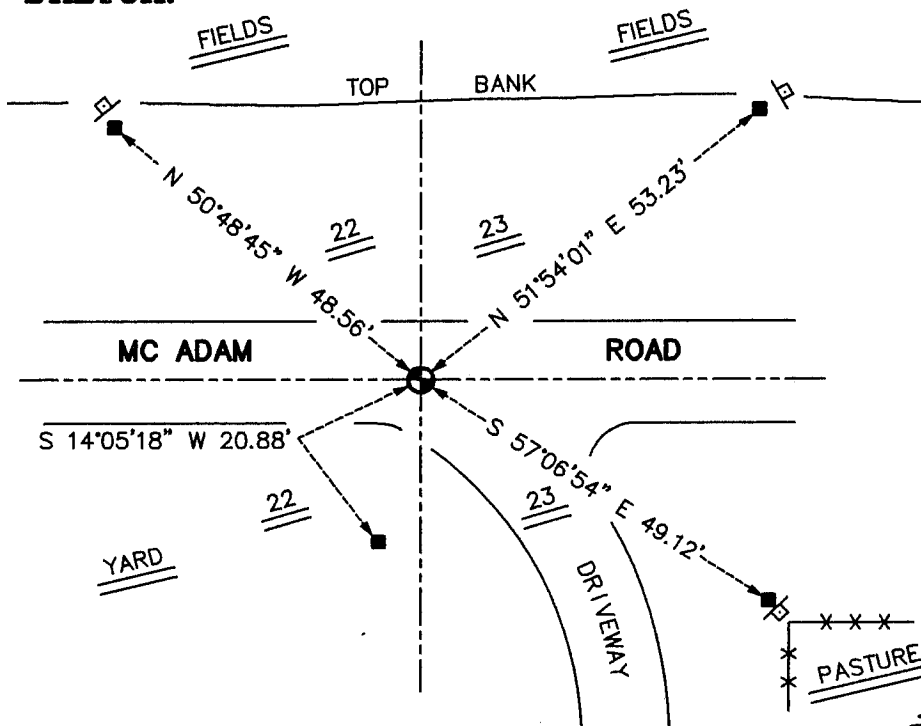
CORNER WAS SET IN 1833 BY LUCIUS LYON.  
IN 1983 DOUGLAS MALLIET SET THE CORNER.

**DESCRIPTION OF CORNER EVIDENCE FOUND:**

I FOUND AND ACCEPTED THE MONUMENT USED BY MALLIET.  
VERIFIED THIS LOCATION USING E.D.M. AND G.P.S. METHODS.

**DESCRIPTION OF CORNER AND WITNESS MONUMENTS, REFERENCES AND ACCESSORIES  
USED TO PERPETUATE THE ORIGINAL OR RE-ESTABLISHED LOCATION OF THIS CORNER:**  
WITNESS TO THE CORNER LOCATION: BOBBY SEDGWICK ; SHELBY BLINDERT

**SKETCH:**



**LEGEND**

- \* ALUMINUM MONUMENT IS 7" DOWN \*  
& 6'± SOUTH OF CENTERLINE MC ADAM ROAD
- GRANT COUNTY ALUMINUM MONUMENT FOUND
- NUMBER 4 X 24" REBAR SET WITH RED PLASTIC CAP AND SIGN
- ▴ "D.O.T. SURVEY MARKER NEARBY" SIGN SET
- \*\*\* EXISTING FENCE LOCATION

*Grant Township*

# U.S. PUBLIC LAND SURVEY MONUMENT RECORD

CORNER DESCRIPTION: E/4 CORNER, SECTION 22, T 2N, R 2W

STATE PLANE COORDINATES: N \_\_\_\_\_, E \_\_\_\_\_

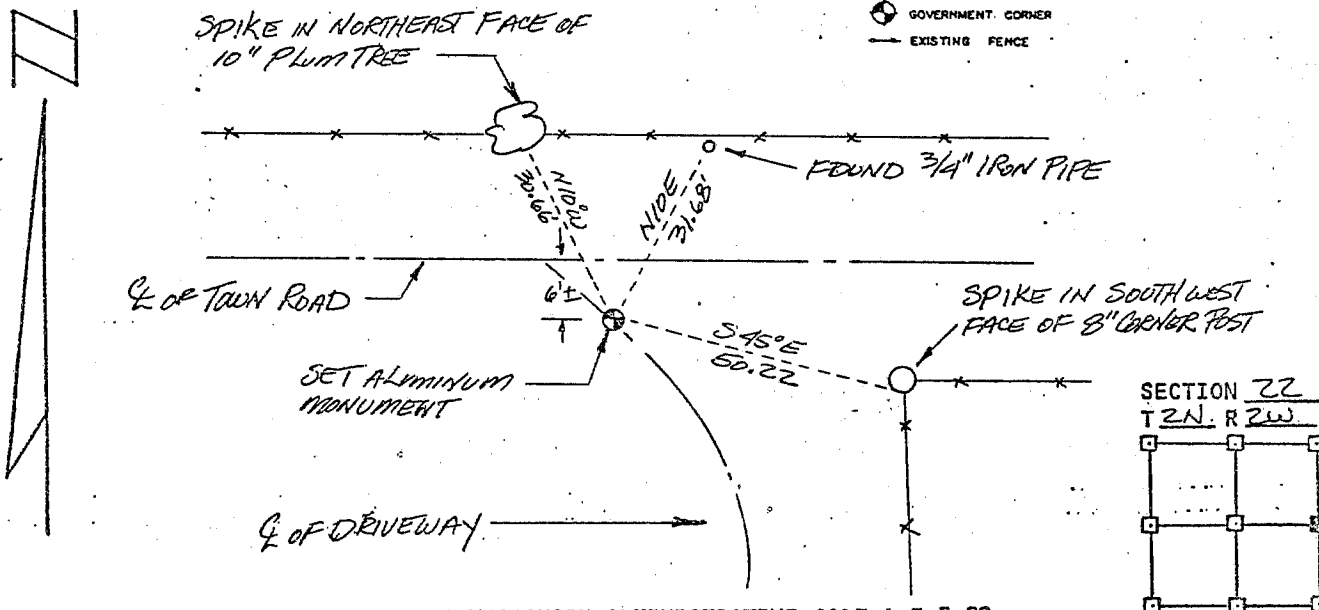
THETA ANGLE: \_\_\_\_\_

HORIZONTAL DATUM: WISCONSIN STATE PLANE COORDINATE SYSTEM, SOUTH ZONE

EVIDENCE: No Monument or Record. Corner on line and proportionate distance between NE & SE section corners, Sec 22;

MONUMENT: FOUND , PLACED   
METHOD OF RESTORATION (RE-ESTABLISHMENT):  
 ACCEPTED EXISTING MONUMENT  
N , E  ACCEPTED EXISTING OCCUPATION  
N , E  LOST CORNER PROPORTIONATE METHODS  
DATE CORNER SET: 3-23-83

- LEGEND**
- ▲ SET #6 REBAR, 1.13 LBS. PER LINEAL FT. MIN. WT.
  - SET 1" X 24" IRON PIPE, 1.13 LBS. PER LINEAL FT. MIN. WT.
  - SET 2" X 30" IRON PIPE, 3.65 LBS. PER LINEAL FT. MIN. WT.
  - FOUND 1" IRON PIPE
  - FOUND 2" IRON PIPE
  - FOUND R/R SPIKE
  - SET R/R SPIKE
  - ⊙ GOVERNMENT CORNER
  - EXISTING FENCE



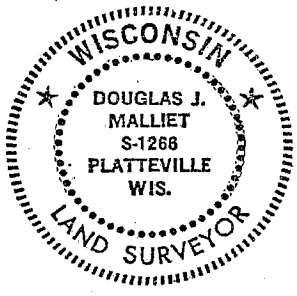
NOT TO SCALE THIS CONFORMS TO WISCONSIN ADMINISTRATIVE CODE A-E 5.02

SURVEYOR'S AFFIDAVIT:  
STATE OF WISCONSIN)  
GRANT COUNTY) SS

I hereby certify that I, Douglas J. Malliet, have complied with the Wisconsin State Statutes, Statutes of the United States, and the rules and regulations made by the Secretary of the Interior in the location of the corner shown above.

DATE OF SURVEY: 3-23-83

Douglas J. Malliet  
REGISTERED LAND SURVEYOR  
# 4266



D. F. BURBACH MUNICIPAL & CIVIL ENGINEERS

410 NORTH SECOND STREET • PLATTEVILLE, WISCONSIN 53818 • (608) 348-3262

MAY 24 1983