

U.S. PUBLIC LAND SURVEY MONUMENT RECORD - GRANT COUNTY, WI

Section 22, Town 2 North Range 2 West, Town of Paris (a)

NOTE: This form is intended and designed to fulfill all requirements of the Wisconsin Administrative Code Chapter A-E 7.08, U.S. Public Land Survey Monument Record (3) (a) (b) (c) (d) (e) (f) (g) (h) (i).

CERTIFICATE: (i)

I, Aaron J. Austin, Wisconsin Professional Land Surveyor, do hereby certify that the corner location on this record was determined by me and/or under my direct supervision and that this U.S. Public Land Survey Monument Record is correct and complete to the best of my knowledge and belief.

Dated this 25th day of September, 2019.

Aaron J. Austin
Aaron J. Austin, S-2922



⊙ = CORNER LOCATION

Grant County Coordinates:
NAD 83 (2011)
Northing: 444,608.36
Easting: 848,076.28

HISTORY OF CORNER ESTABLISHMENT:

Original corner was set in 1833 by Lucius Lyon.
Douglas Malliet set a Berntsen Aluminum Monument on a Survey filed in Book NF, Page 104 dated 6-22-1983 and he prepared a Survey Monument Record dated 3-5-1983.
This location has been accepted on multiple Surveys. More recent Surveys have shown a 3/4" Rebar at this location. This location was verified to Section Corners located to the North South and East.
Kenneth Buesing set a Mag Nail in a different location and prepared a Survey Monument Record dated 3-30-2010. I did not accept this location due to Malliet's Corner being in existence for 36 years.

DESCRIPTION OF CORNER EVIDENCE FOUND: (b) (f) (g) (h)

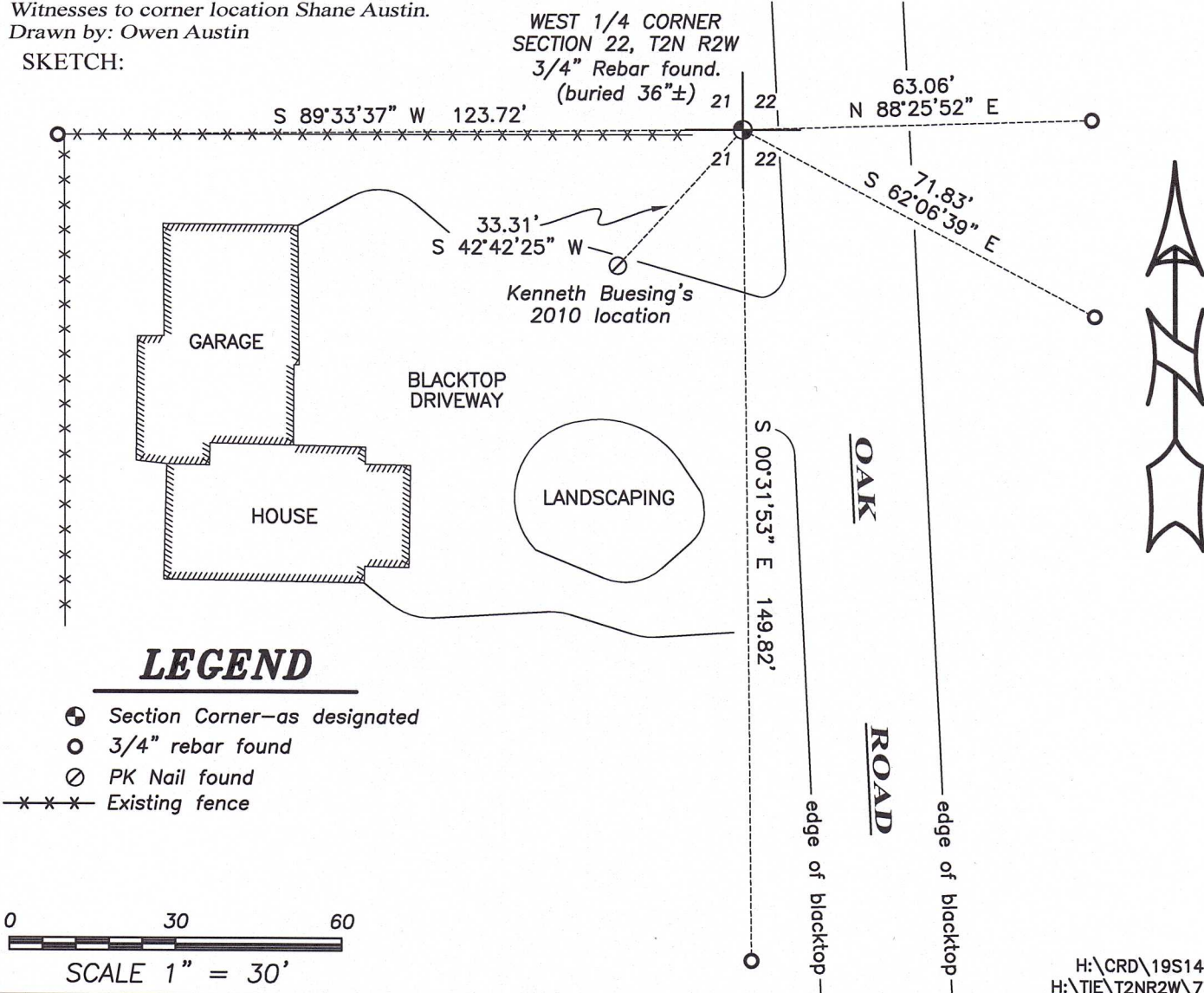
I found and accepted the 3/4" Rebar 36"± below the surface at Malliet's location. I established four witness corners after I verified the Monument's location with G.P.S. and E.D.M. methods.

DESCRIPTION OF CORNER AND WITNESS MONUMENTS, references and accessories used to perpetuate the original or re-established location of this corner. (c) (d) (e)

Witnesses to corner location Shane Austin.

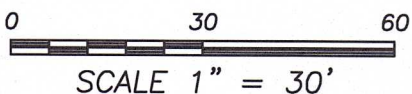
Drawn by: Owen Austin

SKETCH:



LEGEND

- ⊙ Section Corner—as designated
- 3/4" rebar found
- ⊖ PK Nail found
- x-x-x- Existing fence



UNITED STATES PUBLIC LAND SURVEY MONUMENT RECORD

OF

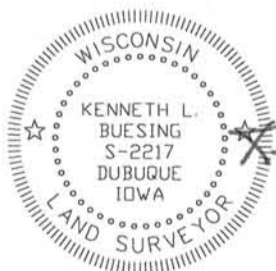
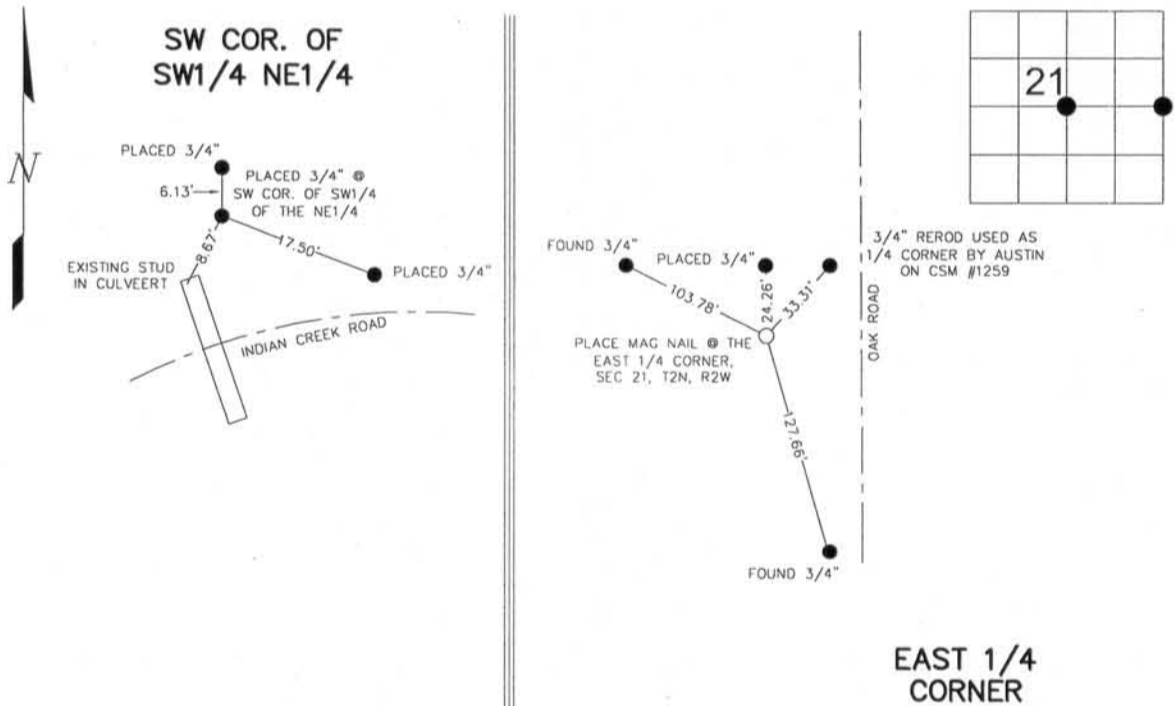
Land Survey Monuments situated in Section 21, Township 2N, Range 2W, of the Fourth Principal Meridian, Grant County, Wisconsin. Previously recorded in NO PREVIOUS RECORDED RECORDS FOUND in County Recorder's Office.
(book, page, document number, etc.)

(Show reason for preparing this certificate, the evidence and detailed procedures used in establishing the corner positions and monumentation found or placed.)

Monument Description and Remarks: SET 3/4" ROD @ THE SW CORNER OF THE SW1/4, NE1/4. CORNER SET IN LINE WITH N 1/4 AND S 1/4 AND IN LINE WITH E 1/4 AND W 1/4.
SET MAG NAIL @ THE EAST 1/4 CORNER IN LINE WITH THE NORTHEAST CORNER AND SOUTHEAST CORNER. RECORD DISTANCES TO THE NORTHEAST AND SOUTHEAST CORNER WERE MATCHED AS WELL AS RECORD DISTANCE OFF CENTERLINE U.S.H. 61. ALL INFORMATION FROM WISCONSIN DOT RECORDS.

PLAN - VIEW

(Show a minimum of three reference ties to durable physical objects, relevant monuments and physical conditions that will enable recovery of the corner.)



I HEREBY CERTIFY THAT THIS LAND SURVEYING DOCUMENT WAS PREPARED AND THE RELATED SURVEY WORK WAS PERFORMED BY ME OR UNDER MY DIRECT PERSONAL SUPERVISION AND THAT I AM A DULY LICENSED LAND SURVEYOR UNDER THE LAWS OF THE STATE OF WISCONSIN.
 Kenneth L. Buesing
 KENNETH L. BUESING (DATE) 30, Mar. 2010
 LICENSE NUMBER S-2217

Corners	List Corners to be Indexed Section	Indexed Twp	Range
SW COR. OF SW1/4, NE1/4	21	2N	2W
EAST 1/4 COR.	21	2N	2W

<p>BUESING ASSOCIATES INC. ENGINEERS AND SURVEYORS 1212 LOCUST ST, DUBUQUE, IA (563) 556-4389</p>	MONUMENT RECORD		
	COUNTY: <u>GRANT</u> TOWNSHIP: <u>PARIS</u>		
	DATE PLOTTED: <u>03-30-10</u> DATE REVISED:	FIELD BOOK # PAGE #	DRAWING # <u>09270-02</u>

Fair Township

US. PUBLIC LAND SURVEY MONUMENT RECORD

CORNER DESCRIPTION: W 1/4 CORNER, SECTION 22, T 2 N, R 2 W

STATE PLANE COORDINATES: N _____, E _____

THETA ANGLE: _____

HORIZONTAL DATUM: WISCONSIN STATE PLANE COORDINATE SYSTEM, SOUTH ZONE

EVIDENCE: No Monument of Record - Set @ Record Distance from Q of Hwy 53 & 61, on STRAIGHT LINE FROM SW COR. OF 22 THROUGH TO NW COR. OF SECTION 22.

MONUMENT: FOUND , PLACED

METHOD OF RESTORATION (RE-ESTABLISHMENT):

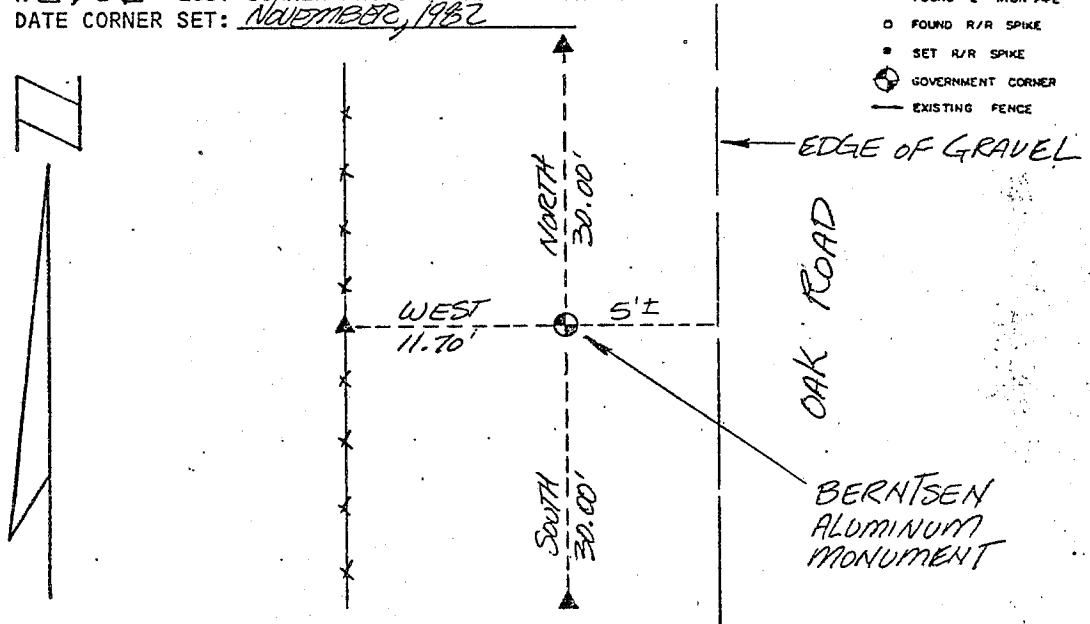
ACCEPTED EXISTING MONUMENT

N , E ACCEPTED OCCUPATION

N , E LOST CORNER PROPORTIONATE METHODS

DATE CORNER SET: NOVEMBER, 1952

- LEGEND
- ▲ SET #6 REBAR, 1.13 LBS PER LINEAL FT. MIN. WT.
 - SET 1" X 24" IRON PIPE, 1.13 LBS. PER LINEAL FT. MIN. WT.
 - SET 2" X 30" IRON PIPE, 3.65 LBS. PER LINEAL FT. MIN. WT.
 - FOUND 1" IRON PIPE
 - FOUND 2" IRON PIPE
 - FOUND R/R SPIKE
 - SET R/R SPIKE
 - ⊙ GOVERNMENT CORNER
 - EXISTING FENCE



NOT TO SCALE THIS CONFORMS TO WISCONSIN ADMINISTRATIVE CODE A-E 5.02

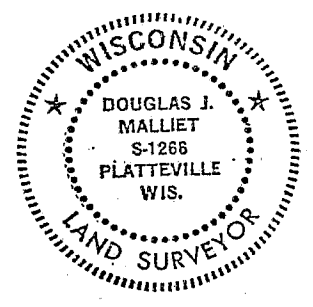
SURVEYOR'S AFFIDAVIT:

STATE OF WISCONSIN)
GRANT COUNTY) SS

I hereby certify that I, DOUGLAS J. MALLIET, have complied with the Wisconsin State Statutes, Statutes of the United States, and the rules and regulations made by the Secretary of the Interior in the location of the corner shown above.

DATE OF SURVEY: 3-5-83

Douglas J. Malliet
REGISTERED LAND SURVEYOR
7266



D. F. BURBACH MUNICIPAL & CIVIL ENGINEERS

410 NORTH SECOND STREET • PLATTEVILLE, WISCONSIN 53818 • (608) 348-3262

MAY 24 1983

77