

U.S. PUBLIC LAND SURVEY MONUMENT RECORD - GRANT COUNTY, WI

Section 19, Town 2 North Range 2 West, Town of Paris (a)

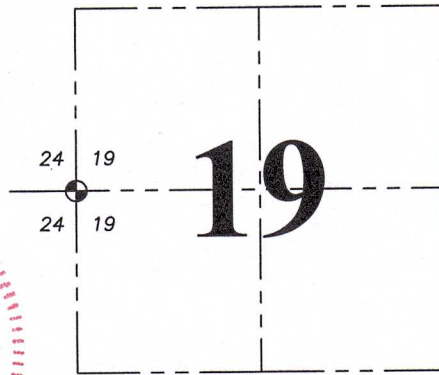
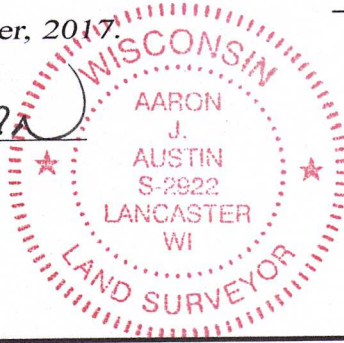
NOTE: This form is intended and designed to fulfill all requirements of the Wisconsin Administrative Code Chapter A-E 7.08, U.S. Public Land Survey Monument Record (3) (a) (b) (c) (d) (e) (f) (g) (h) (i).

CERTIFICATE: (i)

I, Aaron J. Austin, Wisconsin Professional Land Surveyor, do hereby certify that the corner location on this record was determined by me and/or under my direct supervision and that this U.S. Public Land Survey Monument Record is correct and complete to the best of my knowledge and belief.

Dated this 11th day of December, 2017.

Aaron J. Austin
Aaron J. Austin, S-2922



⊙ = CORNER LOCATION

HISTORY OF CORNER ESTABLISHMENT:

Original corner was set by Lucius Lyon in 1832.
Terrance Genske found a 1" iron pipe and prepared a Survey Monument Record dated 6-18-1980.

DESCRIPTION OF CORNER EVIDENCE FOUND: (b) (f) (g) (h)

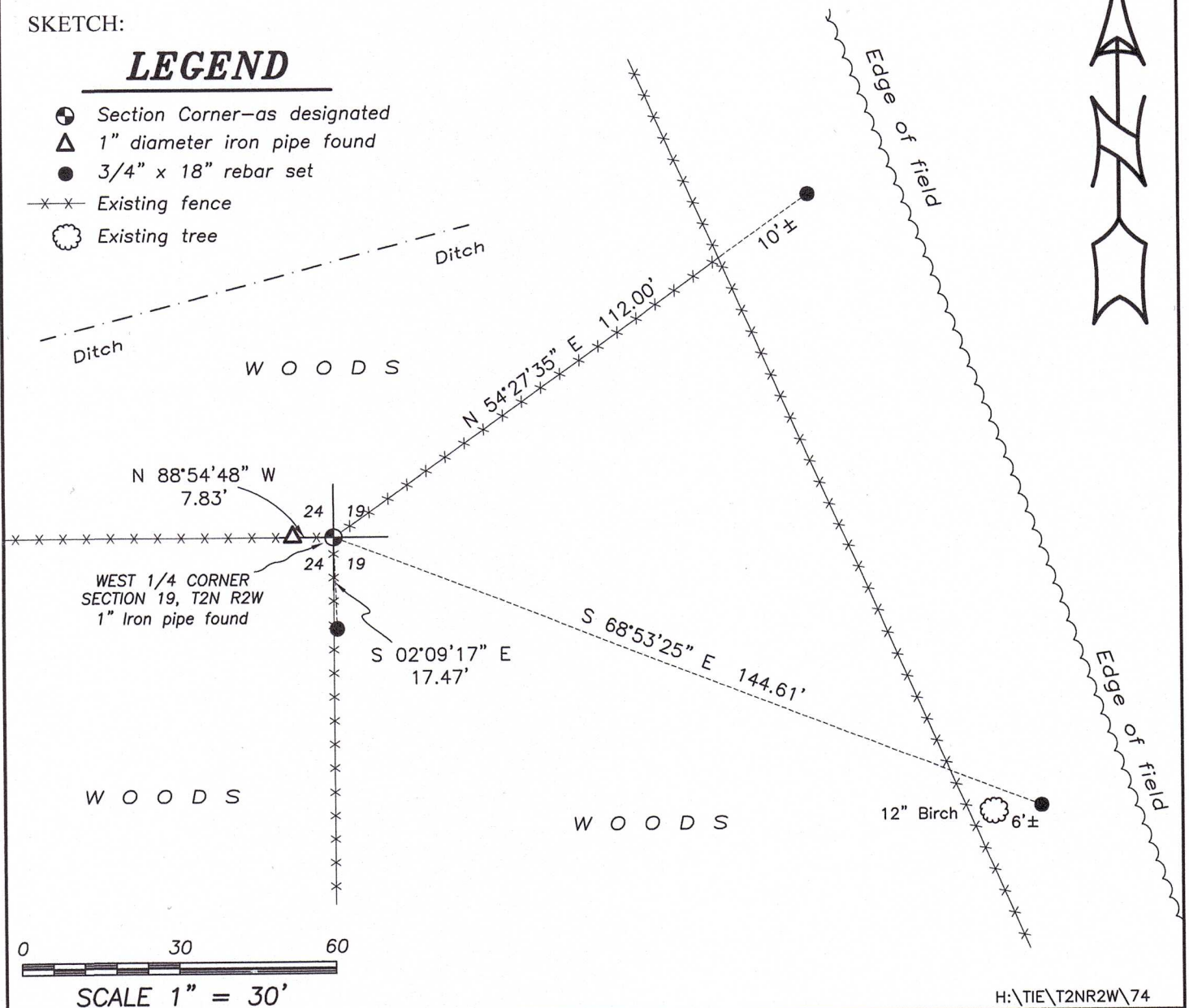
I found the 1" iron pipe as referenced on Genske Survey Monument Record and one witness corner. I set three additional witness corners after I verified the corner's location with G.P.S. and E.D.M. methods.

DESCRIPTION OF CORNER AND WITNESS MONUMENTS, references and accessories used to perpetuate the original or re-established location of this corner. (c) (d) (e)
Witnesses to corner location Shane Austin. Drawn by Owen Austin.

SKETCH:

LEGEND

- ⊙ Section Corner—as designated
- △ 1" diameter iron pipe found
- 3/4" x 18" rebar set
- x-x- Existing fence
- ⊙ Existing tree



SECTION CORNER TIE SHEET

To the west 1/4 corner of Section 19, Town 2 North, Range 2 West, Paris Township, Grant County, Wisconsin.

I, Terrance L. Genske, hereby certify that I have complied with Wisconsin Statutes, Statutes of the United States, and the rules and regulations made by the Secretary of the Interior in the location of the corner shown below.

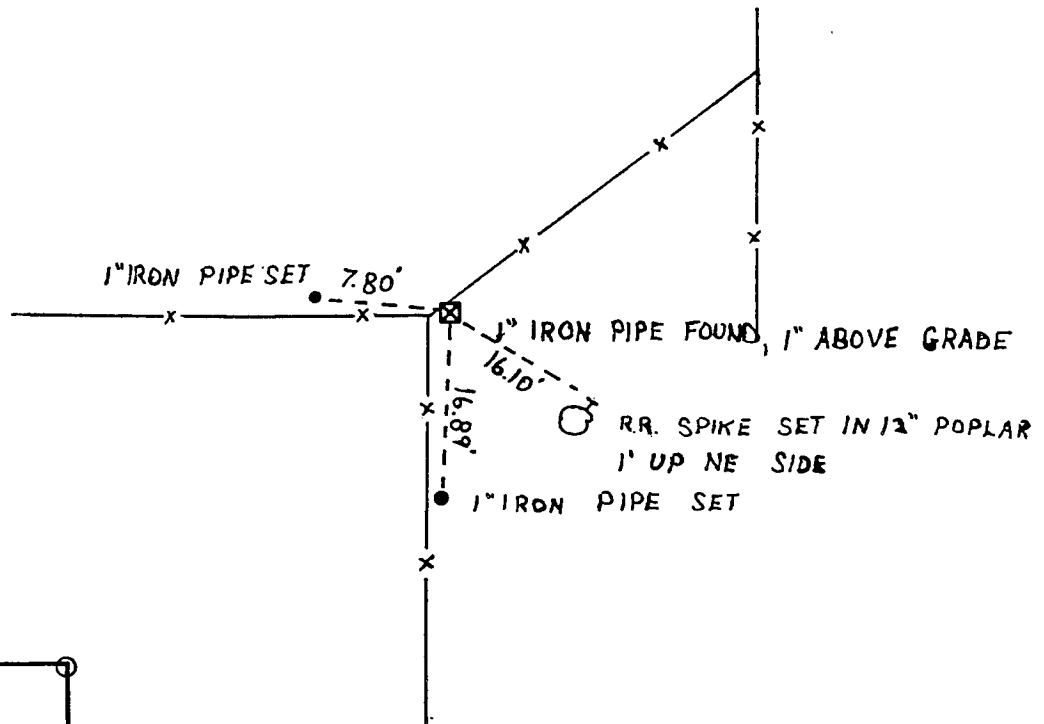
Terrance L. Genske
 Terrance L. Genske
 6/18/80



Description of Original Monument and Accessories

Wood post set by Lucius Lyon in February, 1832
 White oak 17" S18W 51 links
 White oak 14" N11W 56 links

Monument and Accessories Set



Description of Corner Evidence

Found an existing 1" iron pipe at an old fence intersection.

