

U. S. PUBLIC LAND SURVEY MONUMENT RECORD

INSTRUCTIONS: This record shall show the location of the corner and shall include all of the following nine elements (a through i).

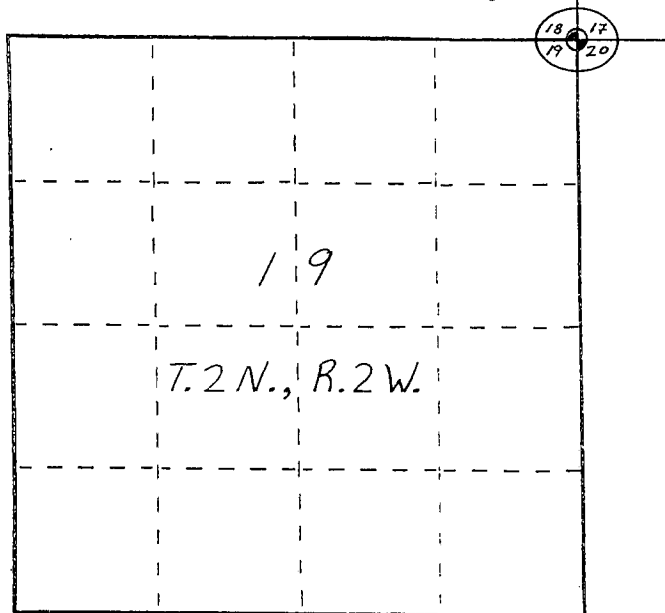
(a) Identify the corner by reference to the U.S. public land survey system.

○ = Corner monument restored.

The Northeast Corner
of Section 19, Town 2 North,
Range 2 West, Paris Township,
Grant County, Wisconsin.

Grant County Coordinates

N = 447,177.0'
E = 837,494.3'

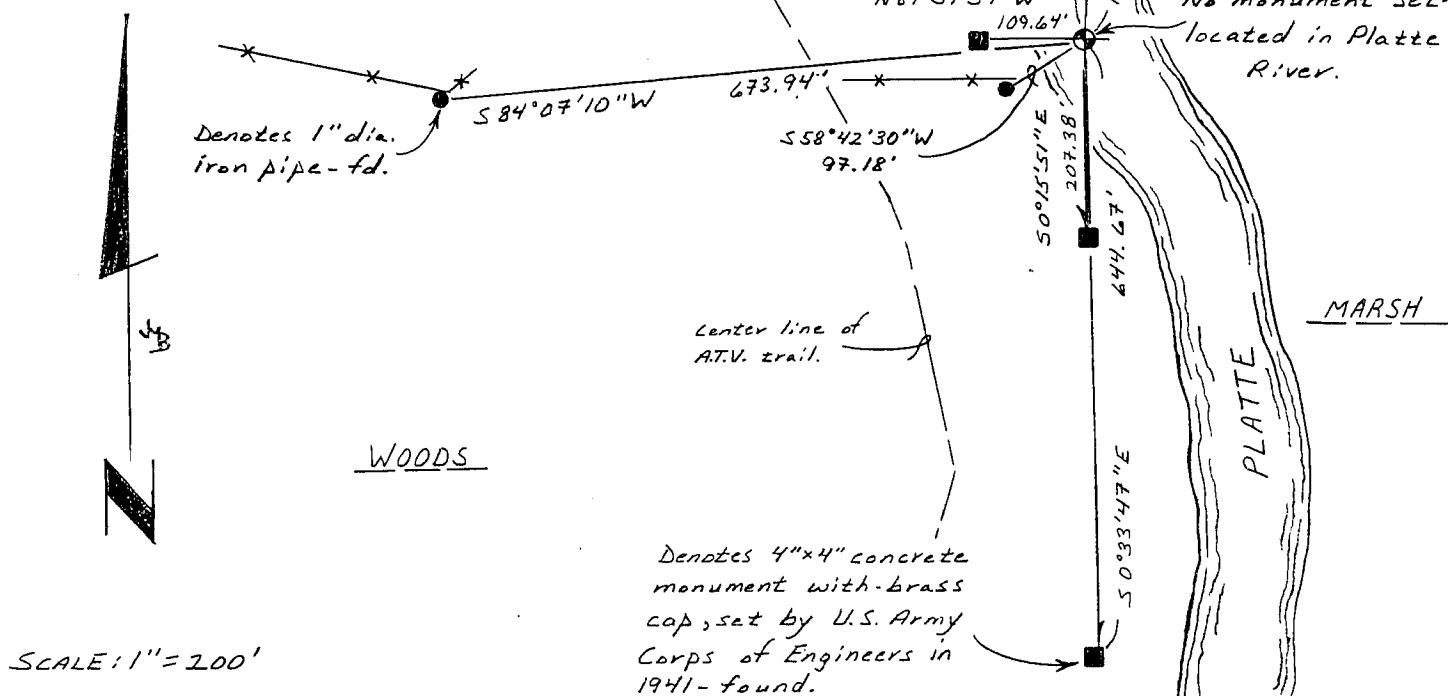


(b) Describe any record evidence, monument evidence, occupational evidence, testimonial evidence or any other material evidence you considered, and whether the monument was found or placed.

Corner location was determined using found monumentation and information on tie sheets for the West Quarter and Southwest Corners of Section 17 by Timothy J. Moore (3-16-1988).

(c) In the plan view drawing below, provide reference ties to at least 4 witness monuments, or, if the location is within a municipality, to at least 2 witness monuments. (Witness monuments shall be made of concrete, natural stone, iron or other equally durable material, ~~except~~ wood.) Describe witness monuments.

(d) Show a plan view drawing depicting the relevant monuments and reference ties which is sufficient in detail to enable accurate relocation of the corner monument if the corner monument is disturbed. Indicate north.



SCALE: 1" = 200'

(e) Describe any material discrepancy between the location of the corner as restored or reestablished and the location of that corner as previously restored or reestablished by distance and direction. Show the discrepancy on the plan view drawing under (d), above. Show the distances between the corner as previously restored or reestablished and (1) the corner as restored or reestablished, and (2) to at least 2 of the witness monuments shown on the drawing in (d), above.

None.

(f) Was the corner restored through acceptance of (1) an obliterated evidence location, or, (2) a found perpetuated location?

A found perpetuated location.

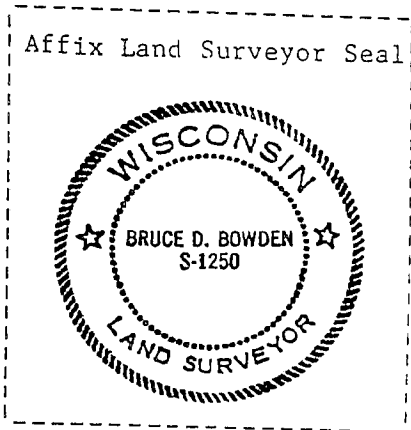
(g&h) Was the corner reestablished through lost corner proportionate methods? If so, show the method, including the directions and distances to other public land survey corners used as evidence or used for proportioning in determining the corner location?

No.

(i) I, BRUCE D. BOWDEN
(type or print name) certify that the corner location shown on this record was determined by me or under my direction and control, and that this U.S. Public Land Survey Monument Record is correct and complete to the best of my knowledge and belief.

Bruce D. Bowden
Signature

AUG 15, 2001
Date



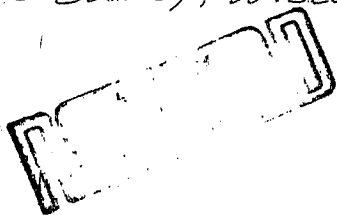
U. S. PUBLIC LAND SURVEY MONUMENT RECORD

INSTRUCTIONS: This record shall show the location of the corner and shall include all of the following nine elements (a through i).

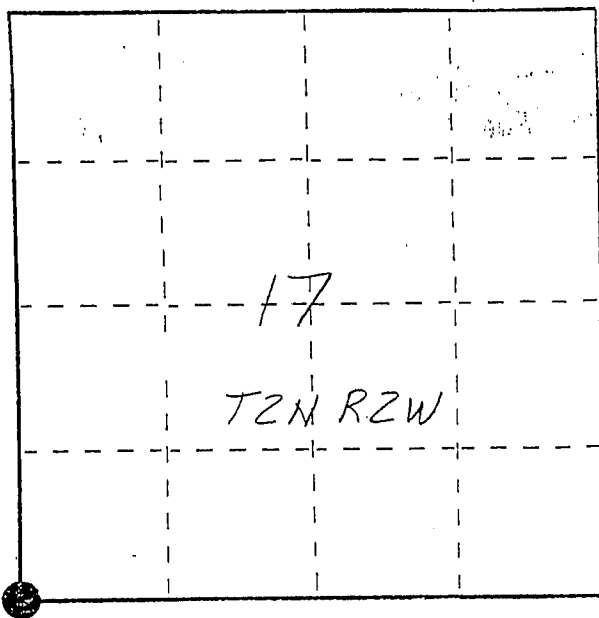
(a) Identify the corner by reference to the U.S. public land survey system.

● = Corner monument restored.

SW corner section 17
T2N R2W of the
4th P.M.
Town of Paris
Grant County, Wisconsin.



APR 27 1988



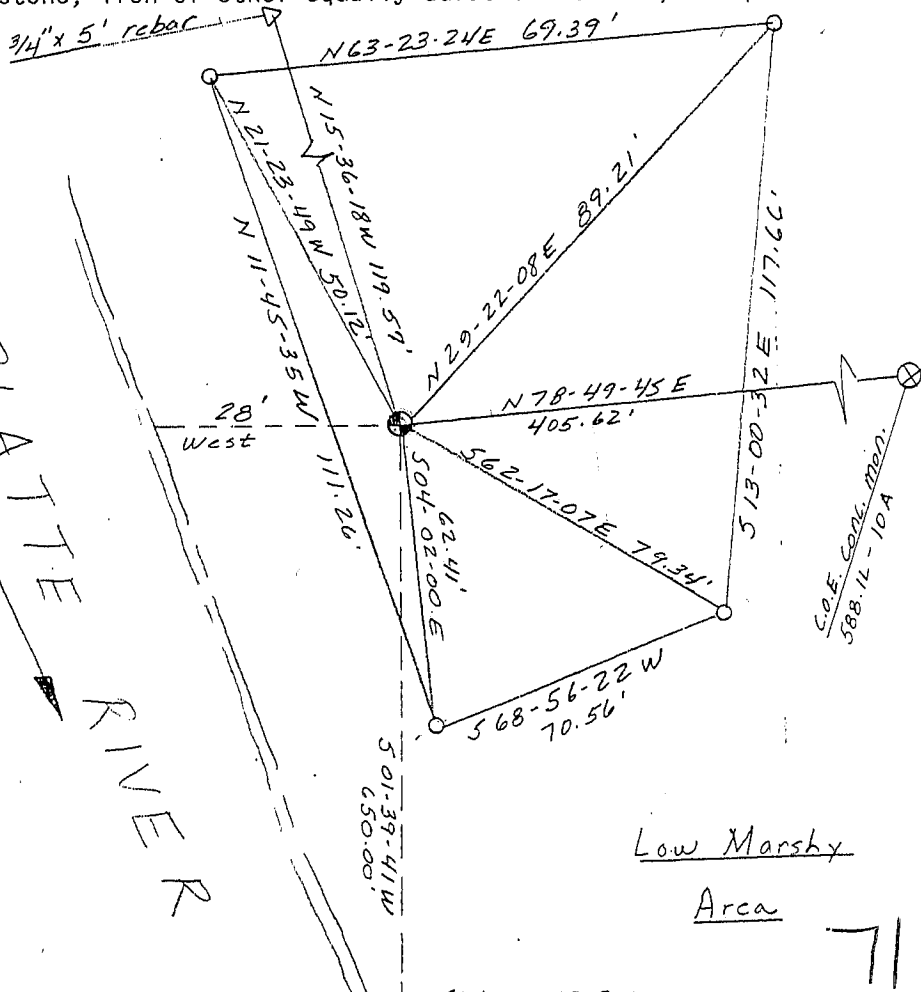
Witness Corner Set

(b) Describe any record evidence, monument evidence, occupational evidence, testimonial evidence or any other material evidence you considered, and whether the monument was found or placed.

Corner falls in Platte River. A witness corner was set 650.00' northerly of the corner location and on the line between the SW cor. and NW corner of said section 17. The corner location was determined by information from a 1937 C.O.E survey and actual monuments found in the field from the survey. Information and monuments from an anonymous though recorded survey also helped in reestablishing the corner. This corner location agrees with other reestablished corners in the section.

(c) In the plan view drawing below, provide reference ties to at least 4 witness monuments, or, if the location is within a municipality, to at least 2 witness monuments. (Witness monuments shall be made of concrete, natural stone, iron or other equally durable material, ~~except wood.~~) Describe witness monuments.

(d) Show a plan view drawing depicting the relevant monuments and reference ties which is sufficient in detail to enable accurate relocation of the corner monument if the corner monument is disturbed. Indicate north.



No Scale
Bearings - Wis. Grid

● 3" x 5 foot pipe with D.O.T. aluminum cap, about one foot above ground.

○ Ref. mon. - 3/4" x 24" rebar w/cap.

Low Marshy Area

Area

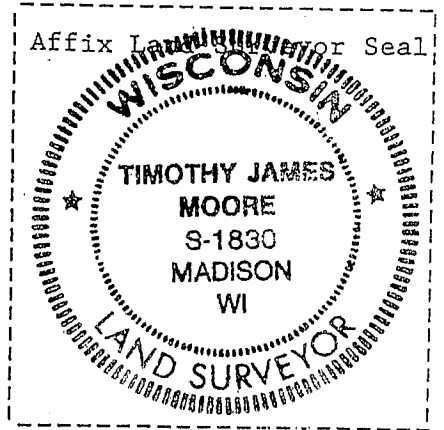
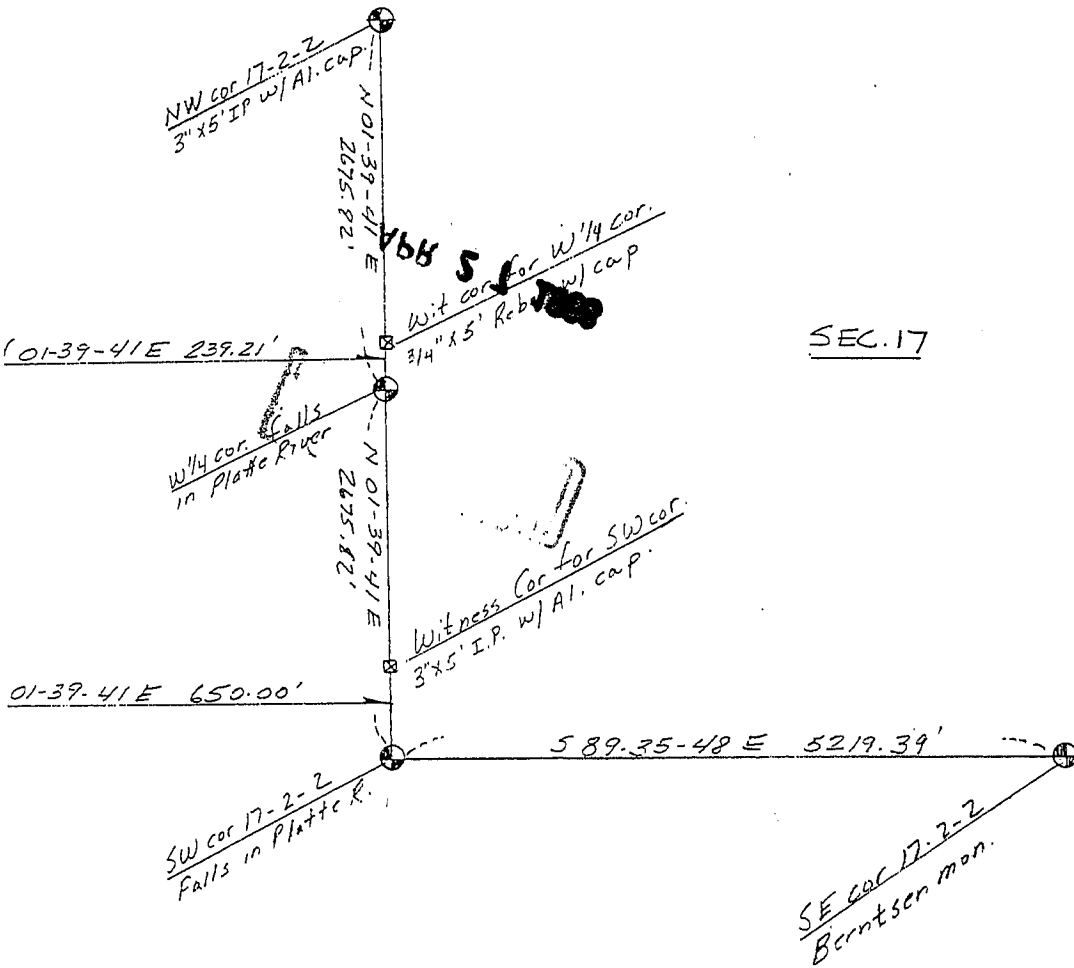
reestablished and the location of that corner as previously restored or reestablished by distance and direction. Show the discrepancy on the plan view drawing under (d), above. Show the distances between the corner as previously restored or reestablished and (1) the corner as restored or reestablished, and (2) to at least 2 of the witness monuments shown on the drawing in (d), above.

(f) Was the corner restored through acceptance of (1) an obliterated evidence location, or, (2) a found perpetuated location?

(g&h) Was the corner reestablished through lost corner proportionate methods? If so, show the method, including the directions and distances to other public land survey corners used as evidence or used for proportioning in determining the corner location?



No Scale
Bearings - Wis. Grid



(i) I, Timothy J. Moore
(type or print name) certify that the corner location shown on this record was determined by me or under my direction and control and that this U.S. Public Land Survey Monument Record is correct and complete to the best of my knowledge and belief.

Timothy J. Moore
Signature

3-16-88
Date