

22063

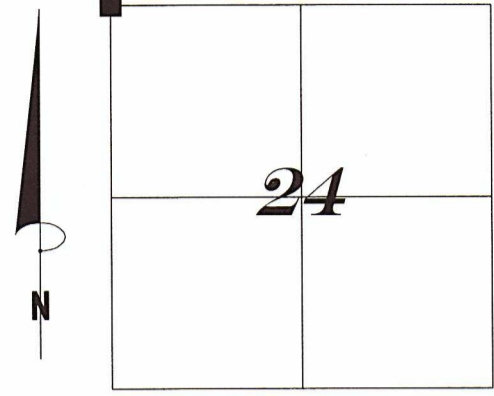
JUL 25 2022

U.S. PUBLIC LAND SURVEY MONUMENT RECORD GRANT COUNTY, WISCONSIN

CORNER:
NORTHWEST CORNER
SECTION 24, T 2 N, R 2 W
GRANT COUNTY, WISCONSIN

Grant County Coordinates:
NAD 83 (2011)

Northing = 447,157.41
Easting = 858,602.63



History of original corner establishment and subsequent restorations and descriptions of any record. Monument, occupation, testimonial or other evidence considered.

Record of evidence is the original Government survey in 1833 by Lucious Lyon.
In 1854 Overton shows the corner on a survey filed in Book B, Page 33.
In 1855 Overton Shows the corner on a survey he did in the SW 1/4 Section 13.
No Current Surveys showed this corner.

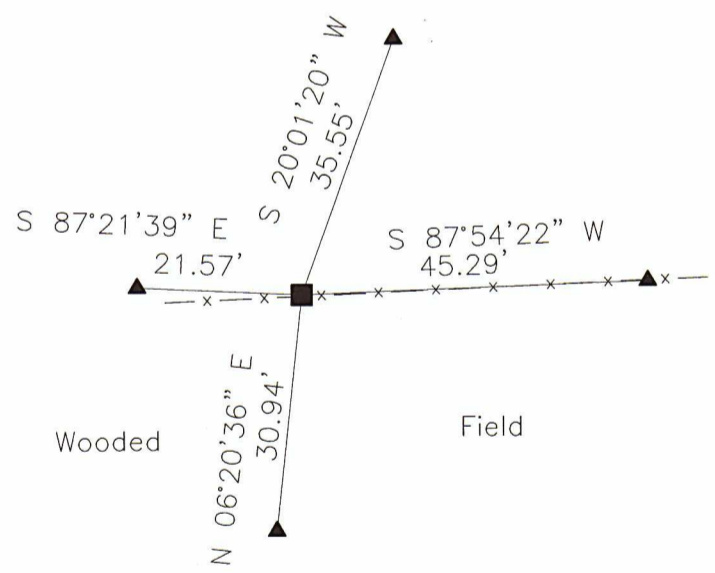
I found a Steel angle Iron Fence post and accepted its location after doing a GNSS traverse of the area. I placed a 1 1/4" x 24" Rebar at the base of the post.

LEGEND

- = Set 1 1/4" x 24" rebar
- ▲ = Set 3/4" x 18" rebar



NOT TO SCALE



I, Joseph D. Niles, Wisconsin Professional Land Surveyor, S-2896, certify that the corner location shown on this record was determined by me or under my direction and control and that this U.S. Public Land Survey Monument record is correct and complete to the best of my knowledge and belief.

Dated this 9th day of June, 2022

Joseph D. Niles
Joseph D. Niles, S-2896
Professional Land Surveyor

