

U.S. PUBLIC LAND SURVEY MONUMENT RECORD

(AS REQUIRED BY s.A-E 7.08, WI. ADM. CODE)

HISTORY OF ORIGINAL CORNER ESTABLISHMENT AND SUBSEQUENT RESTORATIONS AND DESCRIPTION OF ANY RECORD, MONUMENT, OCCUPATION, TESTIMONIAL OR OTHER EVIDENCE CONSIDERED

The corner was set by Larry Austin as noted on a tie sheet dated 3-18-1994. Austin's monument is gone and has been replaced at his location based on 2 remaining ties and ties to survey in the area. Grant County Coordinates are set to the corner. See details below.

COORDINATES ARE ESTABLISHED TO THE CORNER AND WITNESS TIES AS SHOWN BELOW
 BEARING REFERENCE AND COORDINATES ARE GRANT COUNTY COORDINATE SYSTEM
 NAD 83(91) ENGLISH SYSTEM

N= 447249.57 E= 861239.25

CORNER WAS: (CHECK ALL THAT APPLY)

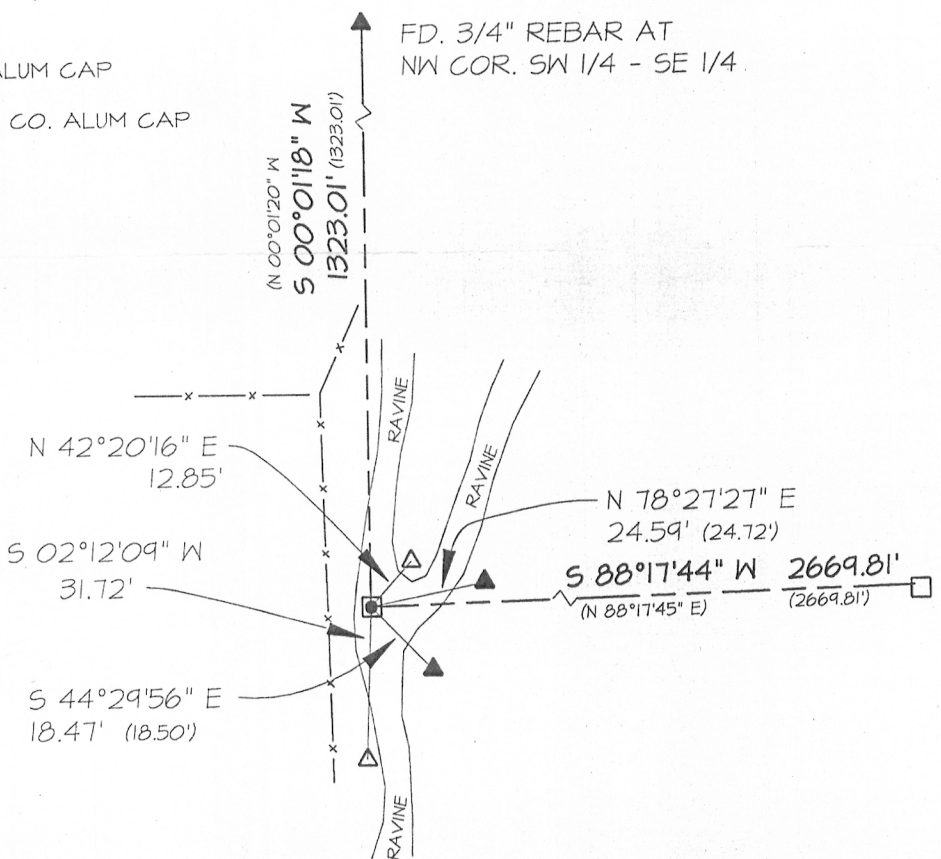
- RESTORED THROUGH ACCEPTANCE OF AN OBLITERATED EVIDENCE LOCATION
- RESTORED THROUGH ACCEPTANCE OF A FOUND PERPETUATED LOCATION
 CONSIDERED A LOST CORNER AND REESTABLISHED THROUGH LOST CORNER PROPORTIONATE METHODS
 (INCLUDE A PLAN VIEW DRAWING SHOWING BEARING & DISTANCE TO OTHER PUBLIC LAND SURVEY CORNERS
 USED FOR PROPORTIONING AND DETERMINING THE CORNER LOCATION)
- RESTORED OR REESTABLISHED IN A LOCATION THAT DIFFERS FROM A PREVIOUS RESTORATION OR REESTABLISHMENT
 (INCLUDE A PLAN VIEW DRAWING AND INDICATE WHAT WAS SET AND/OR FOUND)

Describe the monument and accessories used to perpetuate the location of the corner. (include a plan view drawing and indicated what was set and/or found)

LEGEND:

- △ SET 5/8"Φ REBAR TIE
- FOUND STONE MONUMENT
- ⊗ FOUND REBAR WITH GRANT CO. ALUM CAP
- SET 7/8"X24" REBAR WITH GRANT CO. ALUM CAP
- () RECORDED AS
- ⊗ FD. RING SHANK NAIL
- x—x— FENCE
- ▲ FOUND 3/8" REBAR

SECT <u>14</u>	SECT <u>13</u>
TOWN <u>2</u> N	TOWN <u>2</u> N
RANGE <u>2W</u>	RANGE <u>2W</u>
SECT <u>23</u>	SECT <u>24</u>
TOWN <u>2</u> N	TOWN <u>2</u> N
RANGE <u>2W</u>	RANGE <u>2W</u>



● = LOCATION OF CORNER
 THE S 1/4 COR. OF SECT 13 T 2 N, R 2W
 THE ___ COR. OF SECT ___ T ___ N, R ___
 THE ___ COR. OF SECT ___ T ___ N, R ___
 THE N 1/4 COR. OF SECT 24 T 2 N, R 2W

GRANT _____ COUNTY, WISCONSIN
 JOB ID: 135-086 BOOK #: 13-2 P. 50

I, LAURENCE E SCHMIT CERTIFY THAT THE CORNER LOCATION SHOWN ON THIS RECORD WAS DETERMINED BY ME OR UNDER MY DIRECTION AND CONTROL AND THAT THIS U.S. PUBLIC LAND SURVEY MONUMENT RECORD IS CORRECT AND COMPLETE TO THE BEST OF MY KNOWLEDGE AND BELIEF.

Laurence E Schmit 12-14-13



LAND SURVEYORS SEAL
 INDEX NUMBER 62

SIGNATURE

DATE:

DEC 20 2013

GRANT COUNTY

Survey Monument Record

TYPE OF MONUMENT GRANT Co. Alum. Monument
 STATE PLANE COORDINATES: N _____
 E _____
 ELEVATION — M.S.L. DATUM: _____
 THETA ANGLE: _____
 FIELD BOOK: 94-02
 PAGE 19

CORNER NO. _____
 SECTION 13
 TOWN 2N
 RANGE 2W



LOCATION
 (Indicated by "•")

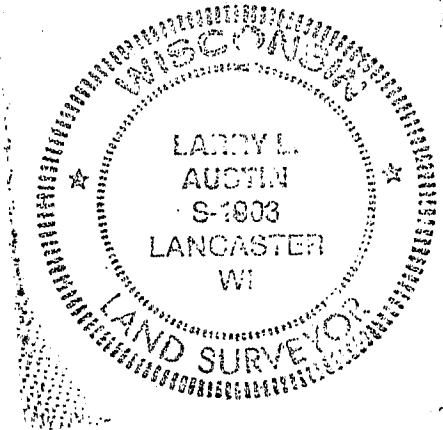
BASIS FOR MONUMENT LOCATION

(Use reverse side if necessary)

Show info such as: History of corner, with reference to Vol. and pg., dates, surveyor; exact description of monument replaced; if location computed, by taped or EDM traverse; landowner, remarks, etc.

NO RECORD FOUND SINCE ORIG. SURVEYS; CORNER SET AT PROJECTION OF FENCE LINES & VERIFIED BY EDM TRAVERSE OF AREA

SEAL:



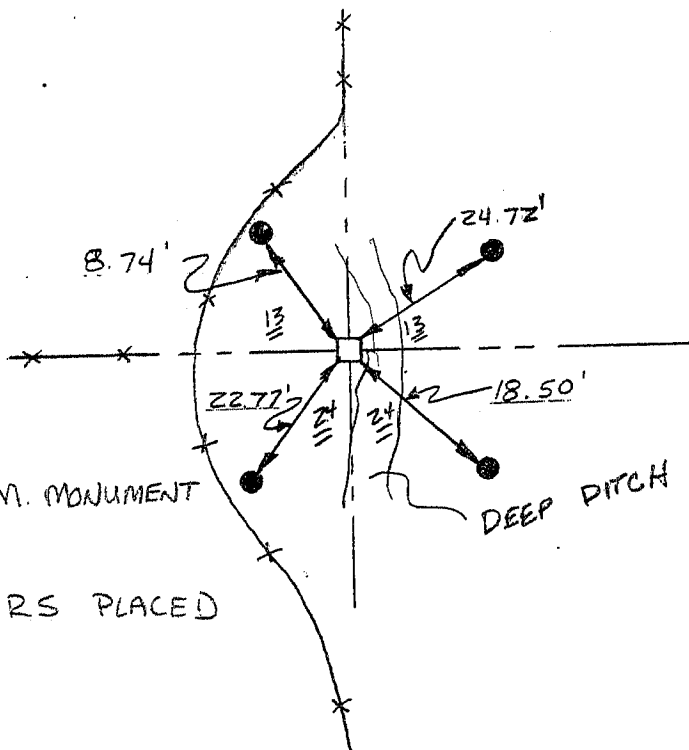
CERTIFIED CORRECT

Larry L. Austin
 Registered Land Surveyor

DATE: 3/18/94

TIE SKETCH

Show at least three (3) ties and monument



LEGEND

- GRANT CO. ALUM. MONUMENT
- 1/2" x 18" REBARS PLACED AS TIES

NO SCALE