

# GRANT COUNTY CERTIFIED LAND CORNER

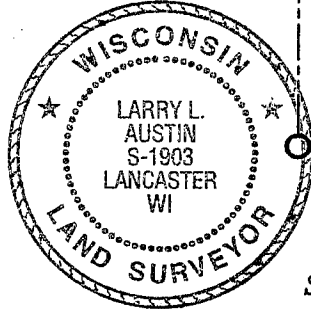
CORNER NUMBER 59

**CERTIFICATE:**

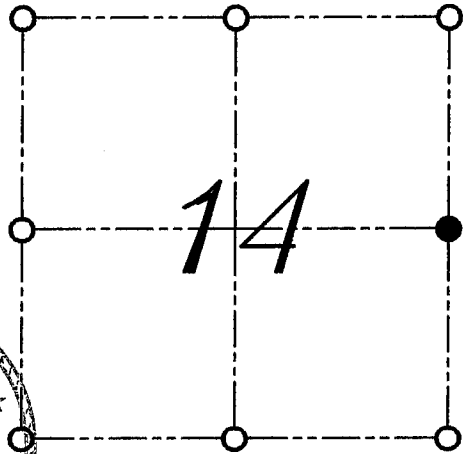
I, LARRY L. AUSTIN, DO HEREBY CERTIFY THAT ON EIGHTH DAY OF MAY, 1999, I FOUND OCCUPATIONAL EVIDENCE OF THE EAST 1/4 CORNER SECTION 14, TOWN 2 NORTH, RANGE 2 WEST, OF THE FOURTH PRINCIPAL MERIDIAN, AND I RE-ESTABLISHED SAID CORNER ACCORDING TO THE WISCONSIN STATUTES AS SHOWN AND DESCRIBED HEREON.

DATED THIS TWENTY-SECOND DAY OF MAY, 1999

*Larry L. Austin*  
LARRY L. AUSTIN S-1903



SEAL



● = CORNER LOCATION

EAST 1/4 CORNER OF  
SECTION 14, T 2 N R 2 W  
TOWN OF PARIS

**HISTORY OF ORIGINAL CORNER ESTABLISHMENT:**

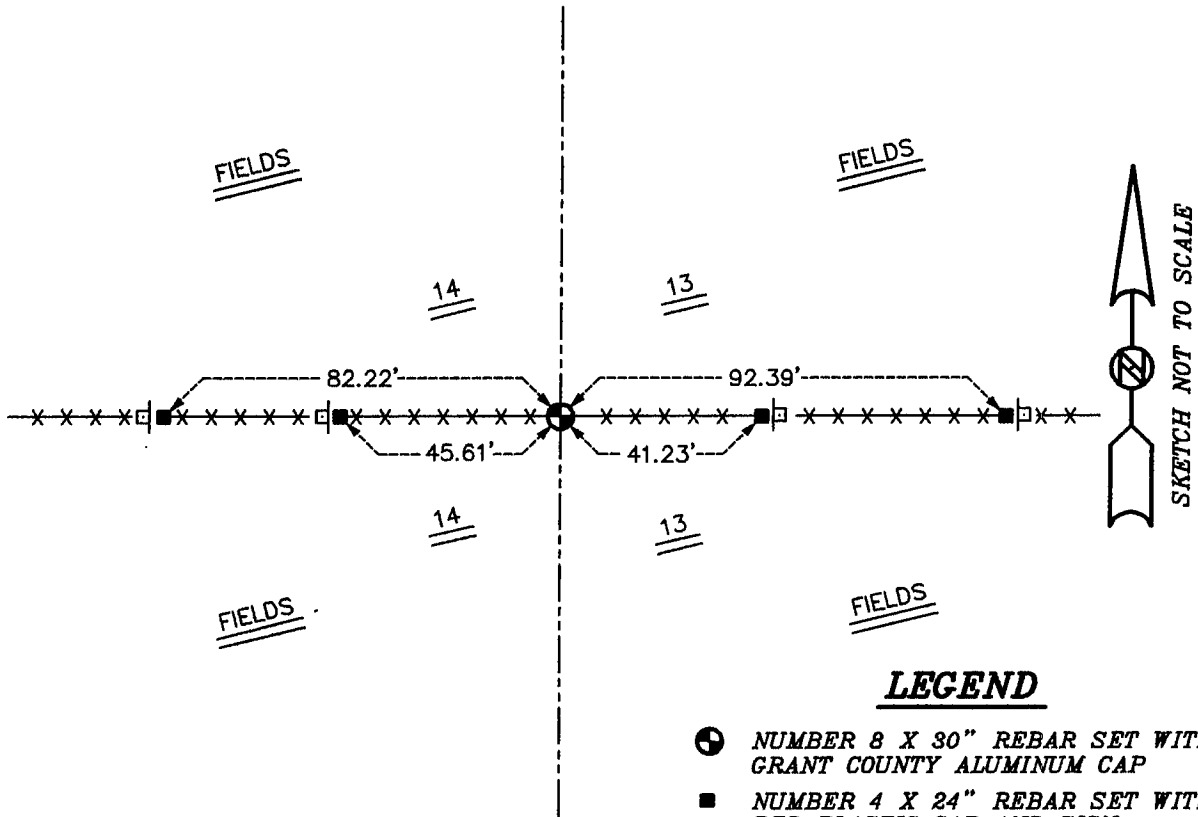
CORNER WAS SET IN 1833 BY LUCIUS LYON.

**DESCRIPTION OF CORNER EVIDENCE FOUND:**

I SET THE CORNER IN THE EAST - WEST FENCE AND AT A SINGLE PROPORTION ALONG THE EAST LINE OF SECTION 14. VERIFIED THIS LOCATION USING E.D.M. AND G.P.S. METHODS.

**DESCRIPTION OF CORNER AND WITNESS MONUMENTS, REFERENCES AND ACCESSORIES USED TO PERPETUATE THE ORIGINAL OR RE-ESTABLISHED LOCATION OF THIS CORNER:**  
WITNESS TO THE CORNER LOCATION: BOBBY SEDGWICK ; SHELBY BLINDERT

**SKETCH:**



**LEGEND**

- NUMBER 8 X 30" REBAR SET WITH GRANT COUNTY ALUMINUM CAP
- NUMBER 4 X 24" REBAR SET WITH RED PLASTIC CAP AND SIGN
- ×× EXISTING FENCE LOCATION
- "D.O.T. SURVEY MARKER NEARBY" SIGN SET