

**UNITED STATES PUBLIC LAND SURVEY MONUMENT RECORD**

OF

Land Survey Monuments situated in Section 9, Township 2N, Range 2W, of the Fourth Principal Meridian, Grant County, Wisconsin. Previously recorded in NO PREVIOUS RECORD in County Recorder's Office.  
(book, page, document number, etc.)

(Show reason for preparing this certificate, the evidence and detailed procedures used in establishing the corner positions and monumentation found or placed.)

Monument Description and Remarks: SET 3/4" ROD @ THE SW CORNER OF THE NW1/4, SE1/4. CORNER SET IN LINE WITH N 1/4 AND S 1/4 AND @ THE MDIPOINT OF A LINE BETWEEN THE CREATED CENTER AND S 1/4.

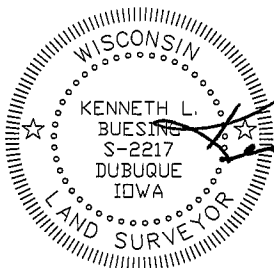
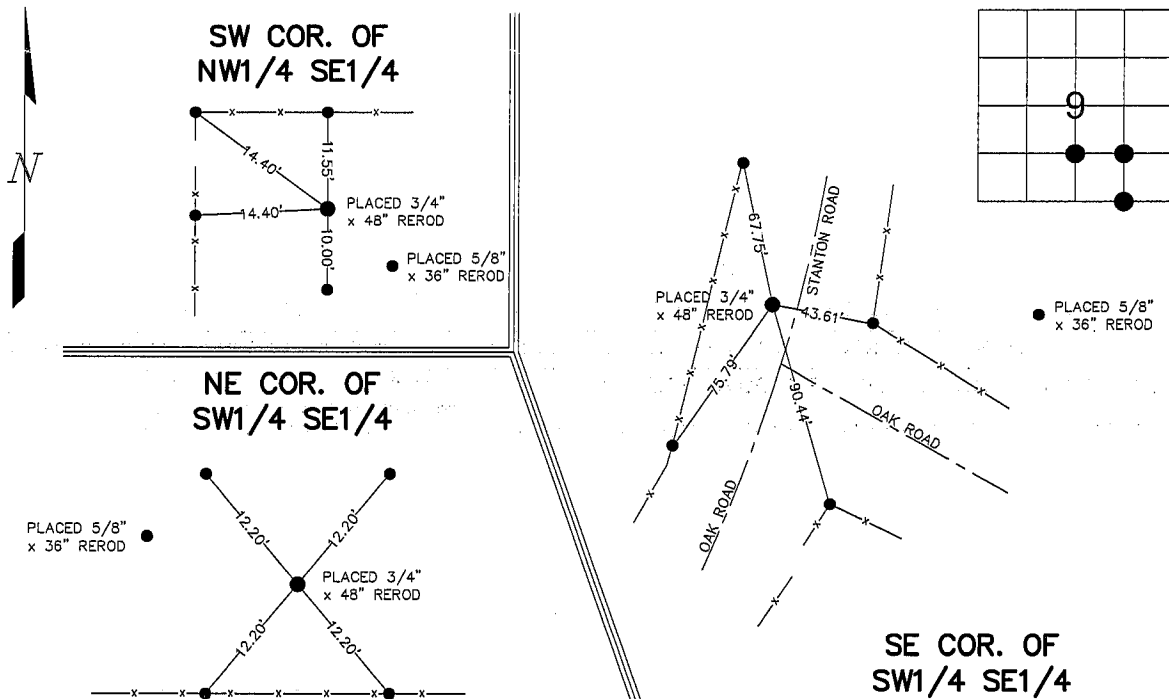
SET 3/4" ROD @ THE NE CORNER OF THE SW1/4, SE1/4. CORNER SET AT THE INTERSECTION OF LINES DRAWN

FROM THE MIDPOINTS OF LINES BETWEEN CREATED CENTER, AND FOUND E 1/4, S 1/4, AND SE CORNER OF SECTION

SET 3/4" ROD @ THE SE CORNER OF THE SW1/4, SE1/4. CORNER SET AT MIDPOINT BETWEEN FOUND S 1/4 AND THE SE CORNERS.

**PLAN - VIEW**

(Show a minimum of three reference ties to durable physical objects, relevant monuments and physical conditions that will enable recovery of the corner.)



I HEREBY CERTIFY THAT THIS LAND SURVEYING DOCUMENT WAS PREPARED AND THE RELATED SURVEY WORK WAS PERFORMED BY ME OR UNDER MY DIRECT PERSONAL SUPERVISION AND THAT I AM A DULY LICENSED LAND SURVEYOR UNDER THE LAWS OF THE STATE OF WISCONSIN.  
 KENNETH L. BUESING (DATE) 14 JAN 2008  
 LICENSE NUMBER S-2217

Corners	List Corners to be Indexed Section	Twp	Range
SW COR. OF NW1/4, SE1/4	9	2N	2W
SE COR. OF SW1/4, SE1/4	9	2N	2W
NE COR. OF SW1/4, SE1/4	9	2N	2W

<p><b>BUESING</b>                  ASSOCIATES INC.                  ENGINEERS AND SURVEYORS                  1212 LOCUST ST, DUBUQUE, IA                  (563) 556-4389</p>	MONUMENT RECORD		
	COUNTY: <u>GRANT</u> TOWNSHIP: <u>PARIS</u>	DATE PLOTTED: <u>12-17-07</u> DATE REVISED:	FIELD BOOK # <u>168</u> PAGE # <u>44</u>