

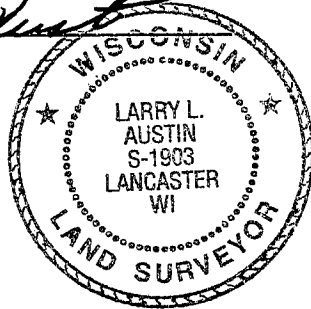
# GRANT COUNTY CERTIFIED LAND CORNER

**CERTIFICATE:**

I, LARRY L. AUSTIN, DO HEREBY CERTIFY THAT ON EIGHTH DAY OF MAY, 1999, I FOUND MONUMENTED EVIDENCE OF THE EAST 1/4 CORNER SECTION 12, TOWN 2 NORTH, RANGE 2 WEST, OF THE FOURTH PRINCIPAL MERIDIAN, AND I RE-ESTABLISHED SAID CORNER ACCORDING TO THE WISCONSIN STATUTES AS SHOWN AND DESCRIBED HEREON.

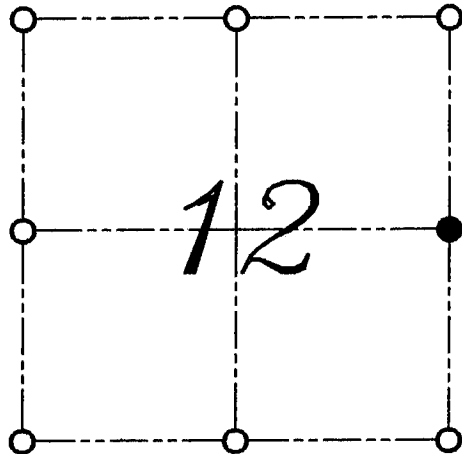
DATED THIS TWENTY-SECOND DAY OF MAY, 1999

*Larry L. Austin*  
LARRY L. AUSTIN S-1903



SEAL

CORNER NUMBER 40



● = CORNER LOCATION

EAST 1/4 CORNER OF  
SECTION 12, T 2 N R 2 W  
TOWN OF PARIS

**HISTORY OF ORIGINAL CORNER ESTABLISHMENT:**

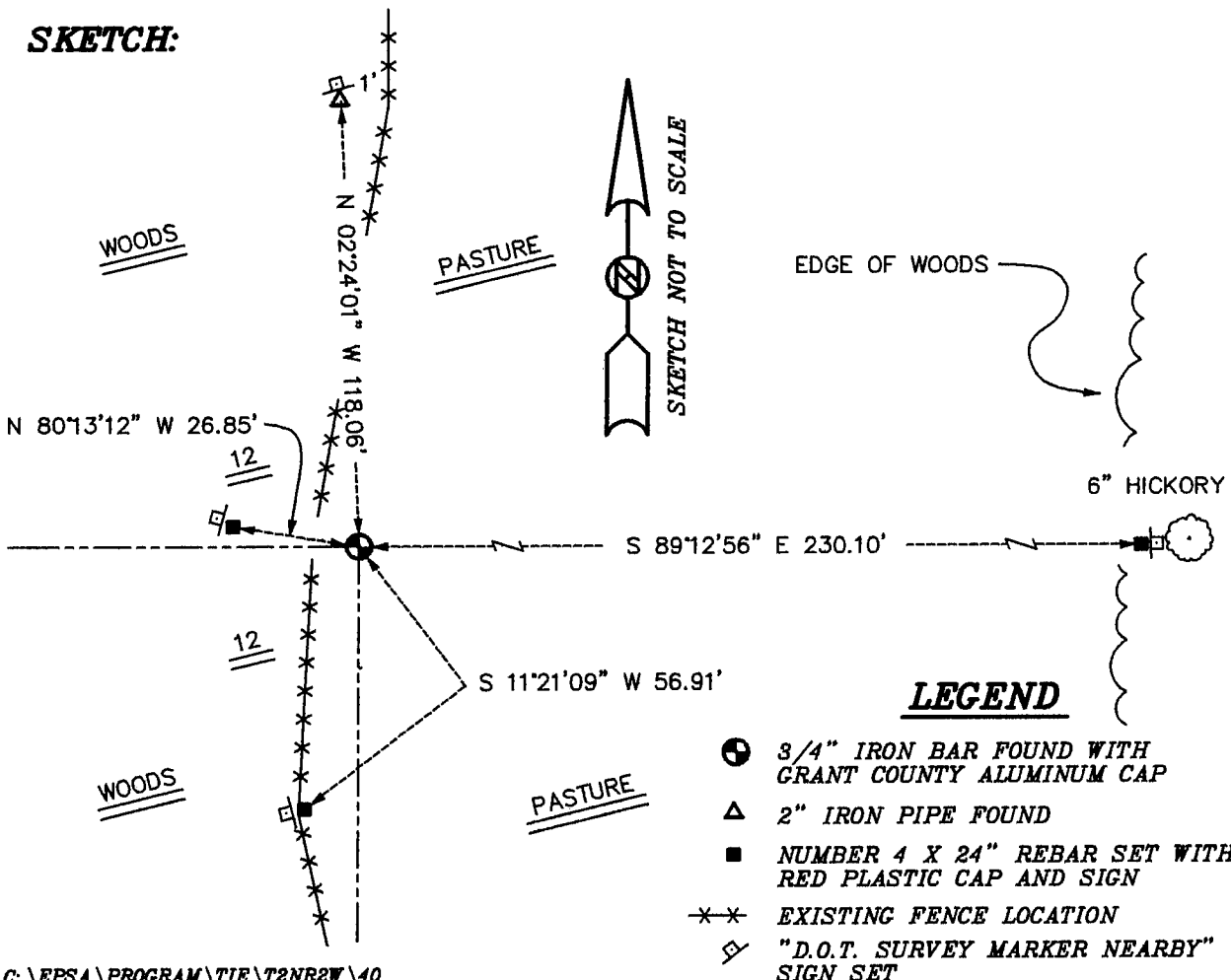
CORNER WAS SET IN 1833 BY LUCIUS LYON.  
I SET THE CORNER IN 1998.

**DESCRIPTION OF CORNER EVIDENCE FOUND:**

I FOUND AND ACCEPTED THE 3/4" IRON BAR AFTER AN E.D.M. AND G.P.S. TRAVERSE OF THE AREA.

**DESCRIPTION OF CORNER AND WITNESS MONUMENTS, REFERENCES AND ACCESSORIES USED TO PERPETUATE THE ORIGINAL OR RE-ESTABLISHED LOCATION OF THIS CORNER:**  
WITNESS TO THE CORNER LOCATION: BOBBY SEDGWICK ; SHELBY BLINDERT

**SKETCH:**



**LEGEND**

- 3/4" IRON BAR FOUND WITH GRANT COUNTY ALUMINUM CAP
- △ 2" IRON PIPE FOUND
- NUMBER 4 X 24" REBAR SET WITH RED PLASTIC CAP AND SIGN
- \*\*\* EXISTING FENCE LOCATION
- ◻ "D.O.T. SURVEY MARKER NEARBY" SIGN SET