

**U.S. PUBLIC LAND SURVEY MONUMENT RECORD – GRANT COUNTY, WI**

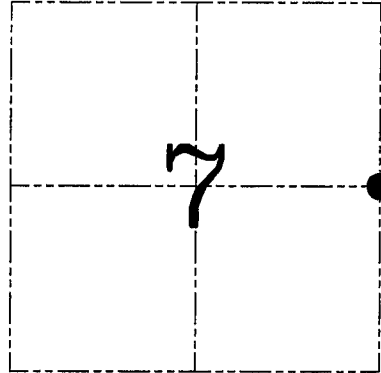
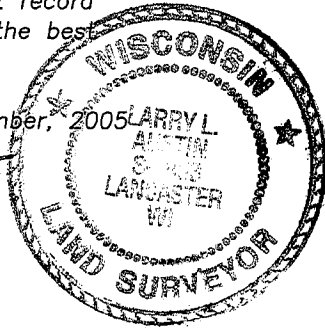
**Section 7, Town 2 North Range 2 West, Town of Paris**

CERTIFICATE

I, Larry L. Austin, do hereby certify that the corner location on this record was determined by me and/or under my direct supervision and that this U.S. public land survey monument record is correct and complete to the best of my knowledge and belief.

Dated this 6th day of December, 2005

*Larry L. Austin*  
Larry L. Austin S-1903



● = CORNER LOCATION

HISTORY OF CORNER ESTABLISHMENT

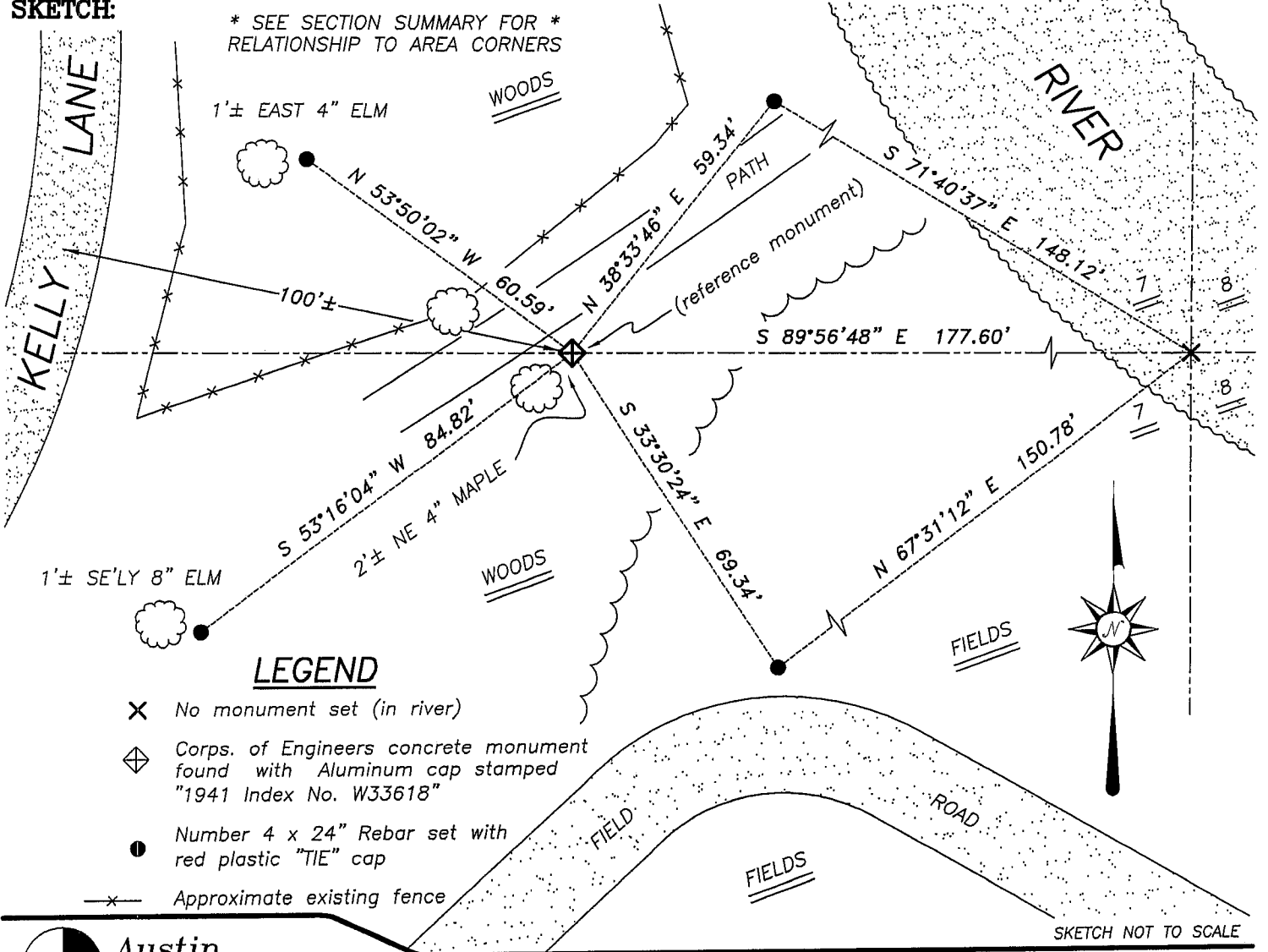
Corner was originally set in 1833 by Lyon. In 1848 Stuntz found the corner to be inaccessible due to the overflow of the Platte River. In 1939 the Corp of Engineers tied to the corner while performing flowage easements and set a reference monument.

DESCRIPTION OF CORNER EVIDENCE FOUND

I found the Corp of Engineers' reference monument. I protracted the corner according to the Corp of Engineers. The corner falls in the river so no monument could be set. The Corp of Engineers' monument will remain the reference monument. Verified this location using EDM & GPS methods.

DESCRIPTION OF CORNER AND WITNESS MONUMENTS, references and accessories used to perpetuate the original or re-established location of this corner. Witnesses to corner location Brad Digman & Shane Austin

**SKETCH:**



**LEGEND**

- ✕ No monument set (in river)
- ◊ Corps. of Engineers concrete monument found with Aluminum cap stamped "1941 Index No. W33618"
- Number 4 x 24" Rebar set with red plastic "TIE" cap
- \*— Approximate existing fence

**Austin Engineering LLC**

4211 HWY 81 E, LANCASTER, WI 53813  
PHONE 608-723-6363 FAX 608-723-6702

JOB NUMBER 05S165  
FIELDBOOK: TDSR, 2411  
G:\T2NR3W\12  
H:\TIE\T2NR2W\35

DRAWN BY: SW AUSTIN  
APPROVED: LL AUSTIN