

U.S. PUBLIC LAND SURVEY MONUMENT RECORD – GRANT COUNTY, WI

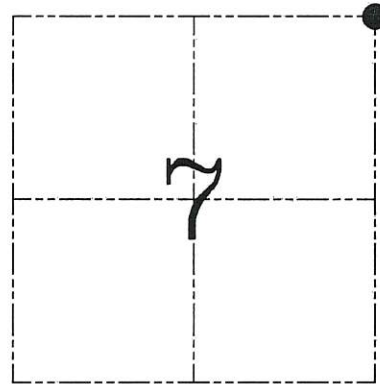
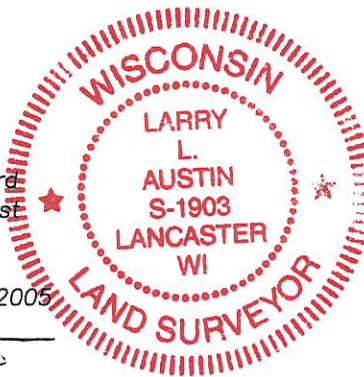
Section 7, Town 2 North Range 2 West, Town of Paris

CERTIFICATE

I, Larry L. Austin, do hereby certify that the corner location on this record was determined by me and/or under my direct supervision and that this U.S. public land survey monument record is correct and complete to the best of my knowledge and belief.

Dated this 6th day of December, 2005

Larry L. Austin
 Larry L. Austin S-1903



● = CORNER LOCATION

HISTORY OF CORNER ESTABLISHMENT

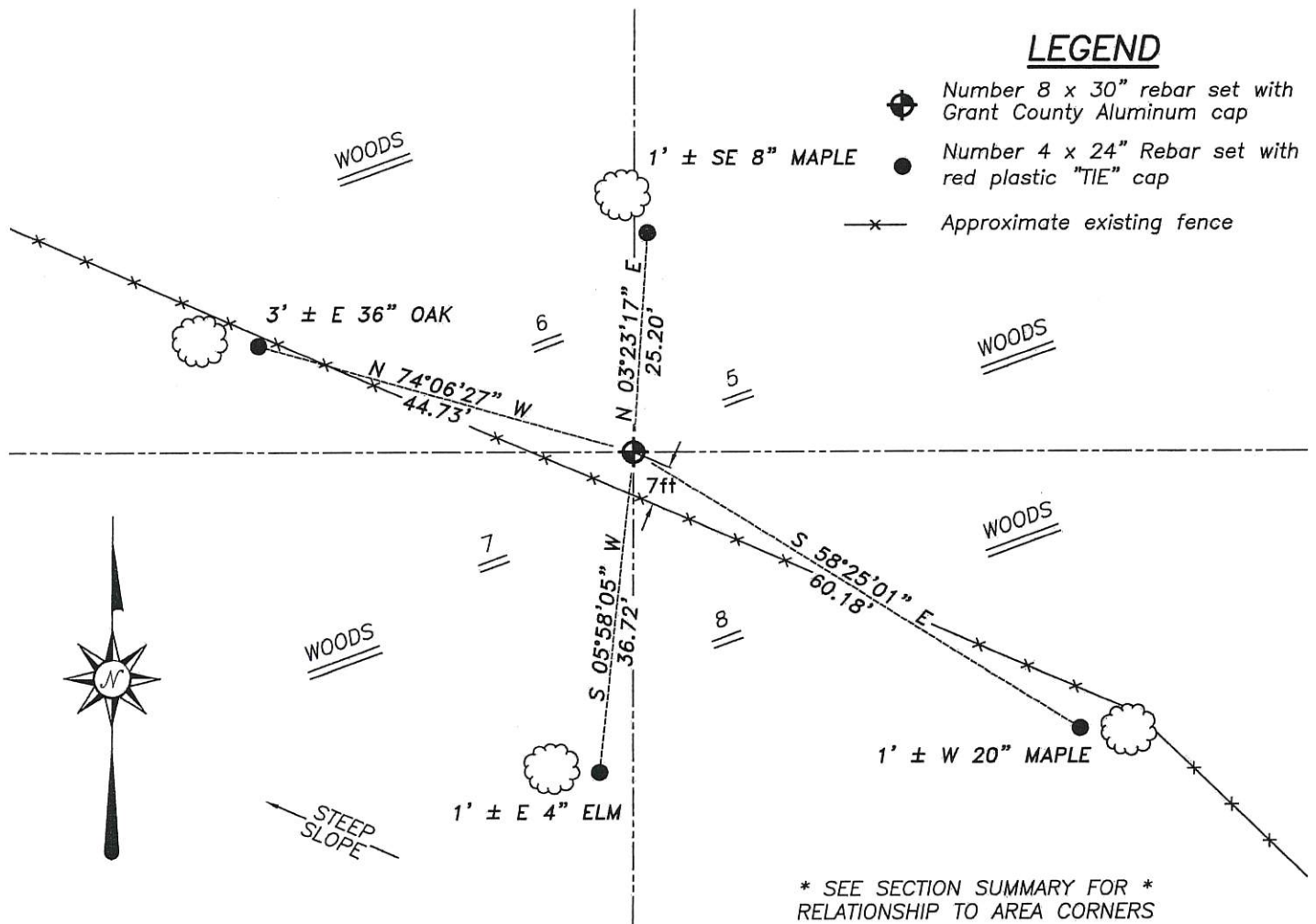
Corner was originally set in 1833 by Lyon. In 1939 the Corp. of Engineers performed land acquisitions and show the corner on their F.W. Tracts. No other record of the corner was found.

DESCRIPTION OF CORNER EVIDENCE FOUND

I was unable to locate the corners shown on the F.W. Tracts. I reset the corner based on dimensions off the F.W. Tracts and monuments referencing to the corner. Verified this location using EDM & GPS methods.

DESCRIPTION OF CORNER AND WITNESS MONUMENTS, references and accessories used to perpetuate the original or re-established location of this corner. Witnesses to corner location Brad Digman & Shane Austin.

SKETCH:



* SEE SECTION SUMMARY FOR *
 RELATIONSHIP TO AREA CORNERS

SKETCH NOT TO SCALE



Austin Engineering LLC

4211 HWY 81 E, LANCASTER, WI 53813
 PHONE 608-723-6363 FAX 608-723-6702

JOB NUMBER 05S165
 FIELDBOOK: 2411
 G:\T2NR3W\12
 H:\TIE\T2NR2W\31

DRAWN BY: ML DIGMAN
 APPROVED: LL AUSTIN