

# U.S. PUBLIC LAND SURVEY MONUMENT RECORD - GRANT COUNTY, WI

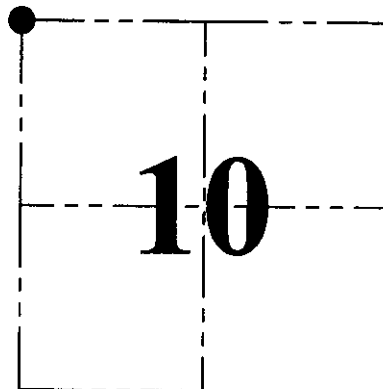
Section 10, Town 2 North Range 2 West, Town of Paris

**CERTIFICATE:**

I, Aaron J. Austin, Wisconsin Professional Land Surveyor, do hereby certify that the corner location on this record was determined by me and/or under my direct supervision, and that this U.S. Public Land Survey Monument Record is correct and complete to the best of my knowledge and belief.

Dated this 20th day of August, 2015.

Aaron J. Austin, S-2922  
 Lancaster, WI  
 Wisconsin Professional Land Surveyor



● = CORNER LOCATION

HISTORY OF CORNER ESTABLISHMENT:

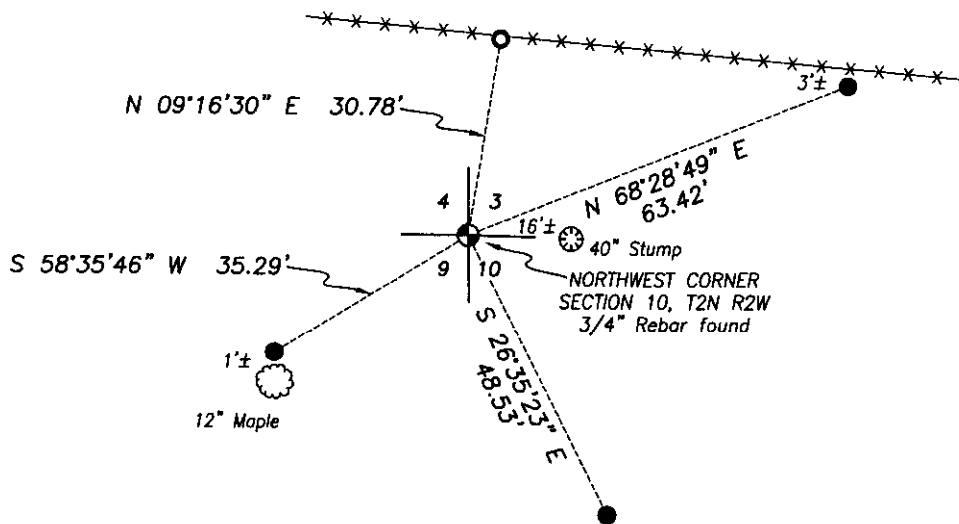
1833-Lucius Lyon set original corner.  
 1856-Overton found original corner on a Survey in Book B, Page 464.  
 1997-Thomas Buck reset the corner on C.S.M. No. 444  
 No other record found for this corner.

DESCRIPTION OF CORNER EVIDENCE FOUND:

I found and accepted a 3/4" Rebar at the location established by Thomas Buck. I did not find a U.S. Public Land Survey Monument Record for this corner, although I did find what I believe to be a witness corner set by Buck. I set 3 additional witness corners as shown hereon and verified this location with E.D.M. and G.P.S. methods.

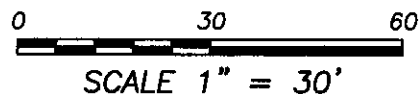
DESCRIPTION OF CORNER AND WITNESS MONUMENTS, references and accessories used to perpetuate the original or re-established location of this corner. Witnesses to corner location Shane Austin and Brandon Austin.

SKETCH:



**LEGEND**

- Section Corner - as designated
- 1/2" x 12" Rebar set with red plastic "TIE" cap
- 1/2" Rebar found
- \*- Approximate existing fence



**Austin Engineering LLC**  
 austinengineeringllc.com

4211 HWY 81 E, LANCASTER, WI 53813  
 PHONE: 608-723-6363 FAX: 608-723-6702

JOB NO: 15s123  
 H:\CRD\15s123  
 H:\TIE\T2NR2W\27

FIELDBOOK: TDSR  
 DRAWN BY: AJ AUSTIN  
 CREW: SW AUSTIN, BL AUSTIN