

GRANT COUNTY CERTIFIED LAND CORNER

CERTIFICATE:

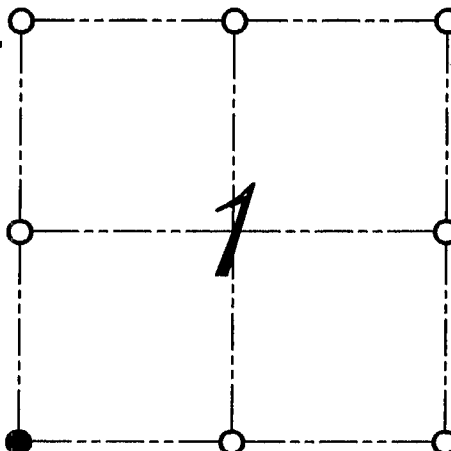
I, LARRY L. AUSTIN, DO HEREBY CERTIFY THAT ON FIRST DAY OF MAY, 1999, I FOUND MONUMENTED EVIDENCE OF THE SOUTHWEST CORNER SECTION 1, TOWN 2 NORTH, RANGE 2 WEST, OF THE FOURTH PRINCIPAL MERIDIAN, AND I RE-ESTABLISHED SAID CORNER ACCORDING TO THE WISCONSIN STATUTES AS SHOWN AND DESCRIBED HEREON.

DATED THIS TWENTY-SECOND DAY OF MAY, 1999

Larry L. Austin
LARRY L. AUSTIN S-1903



CORNER NUMBER 23



● = CORNER LOCATION

SOUTHWEST CORNER OF
SECTION 1, T 2 N R 2 W
TOWN OF PARIS

HISTORY OF ORIGINAL CORNER ESTABLISHMENT:

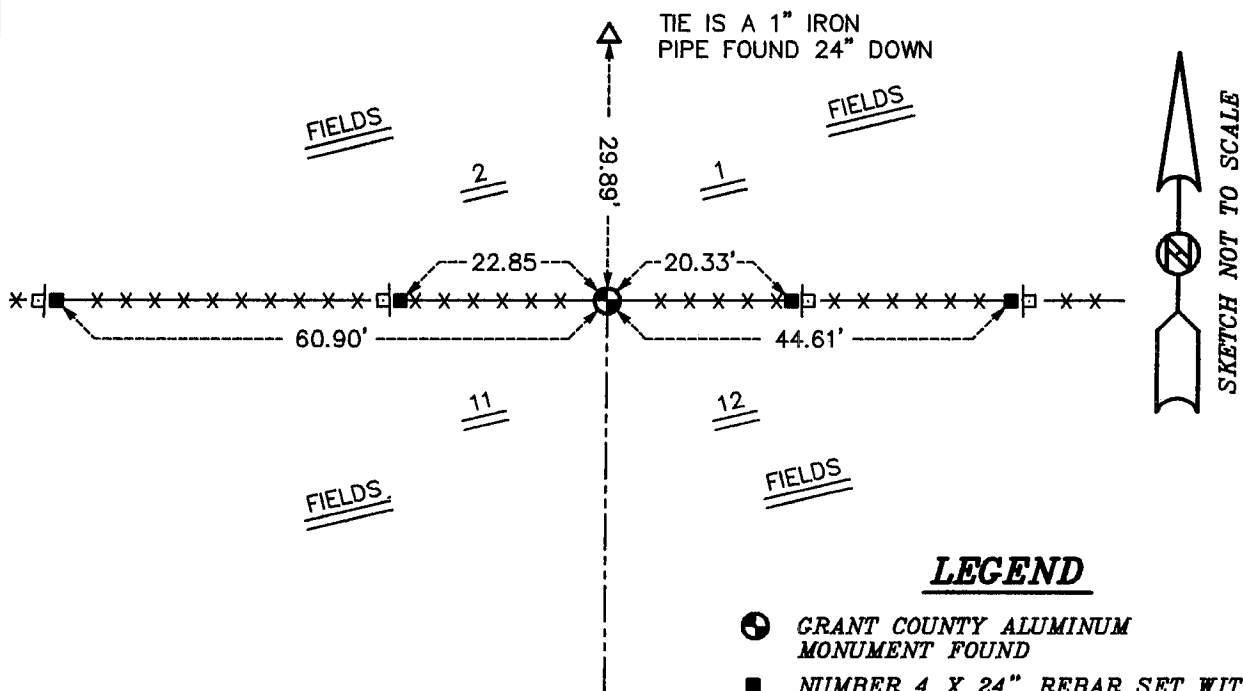
CORNER WAS SET IN 1833 BY LUCIUS LYON.
IN 1985 PAUL CHAFER SET A CAST ALUMINUM MONUMENT AT THIS LOCATION.

DESCRIPTION OF CORNER EVIDENCE FOUND:

I FOUND THE CAST ALUMINUM MONUMENT AND ACCEPTED THIS LOCATION AFTER AN E.D.M. AND G.P.S. TRAVERSE OF THE AREA.

DESCRIPTION OF CORNER AND WITNESS MONUMENTS, REFERENCES AND ACCESSORIES USED TO PERPETUATE THE ORIGINAL OR RE-ESTABLISHED LOCATION OF THIS CORNER:
WITNESS TO THE CORNER LOCATION: BOBBY SEDGWICK ; SHELBY BLINDERT

SKETCH:



LEGEND

- GRANT COUNTY ALUMINUM MONUMENT FOUND
- NUMBER 4 X 24" REBAR SET WITH RED PLASTIC CAP AND SIGN
- ×× EXISTING FENCE LOCATION
- ◇ "D.O.T. SURVEY MARKER NEARBY" SIGN SET

GRANT COUNTY CLERK
RECEIVED

APR 26 1985

PS-7150-11A (9/1/66)

GPO 803-484

CERTIFIED LAND CORNER RESTORATION

State of Wisconsin }
County of Grant } ss.

State Plane Coordinates
1,848,415.785 x
243,593.528 y

I Paul W. Chafer, do hereby certify that on the 7th day of December, 1984, I found evidence of the Northwest corner of Section 12 Township No. 2 North, Range 2 West, Fourth Principal Meridian, as described hereon; and that from this evidence I established a new monument and accessories as described hereon to perpetuate the original location of this corner:

Description of original monument and accessories and subsequent restorations:

Government Survey of township was done in 1832-33 by Lucius Lyon.

- 80.00 Iron wood post 1-2-11-12
- White Oak 21 S68E 12
- Sugar Tree 15 S23W 39

This was the last recorded information of the corner being monumented. No subsequent surveys could be found which referred to this corner.

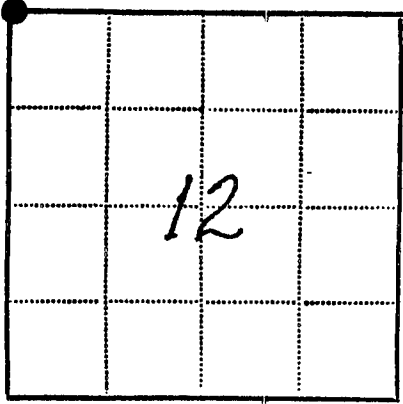
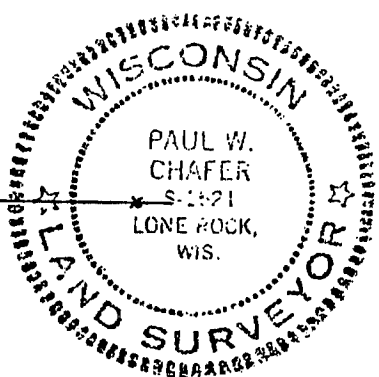
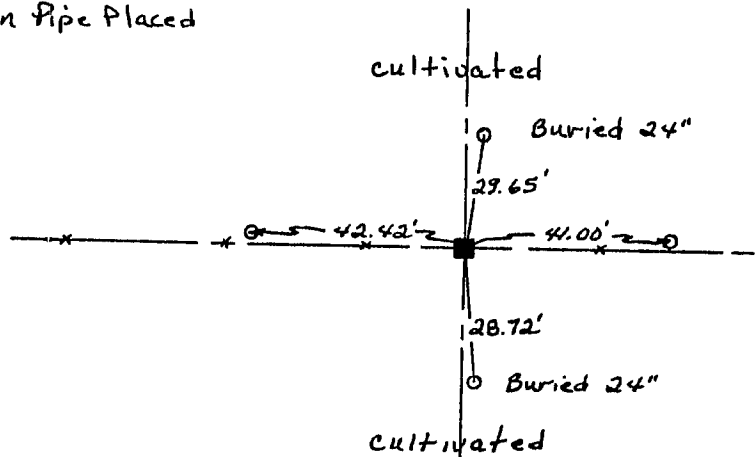
Description of corner evidence found:

Corner was established in an East-West Fence Line, overall North-South Distance comparing favorably to the original survey distance, this location also fits the total distance across the North Boundary of Section 12 very well.

Corner fell within a few feet of the location recalled by local farmer, a thorough surface search was conducted, including the use of a metal detector.

Description of monument and accessories I established to perpetuate the location of this corner:

- 1" x 24" Iron Pipe Placed



● - Corner monument restored
□ -

Resident witnesses Terry L. Cornell

Dated at Richland Center, Wisconsin, this 10 day of December 1984.

Signature Paul W. Chafer Title R.L.S.
(County Surveyor, Registered Land Surveyor, or other duly authorized official)

Surveyors Registration No. S-1521

Office of County of

I hereby certify that the within instrument was filed in this office for record on the day of 19, and was filed in Book No. Page No. of County Records.

Signature Title

Township 2 North, Range 2 West, Section 12, Index No., Page No.