

U.S. PUBLIC LAND SURVEY MONUMENT RECORD - GRANT COUNTY, WI

Section 6, Town 2 North Range 2 West, Town of Paris (a)

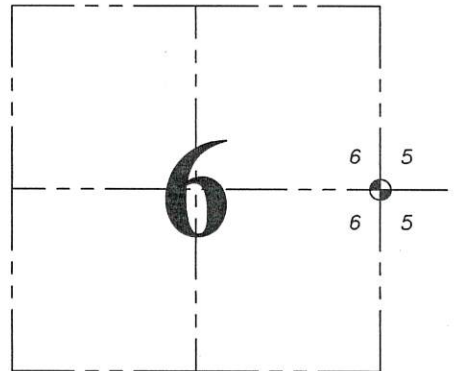
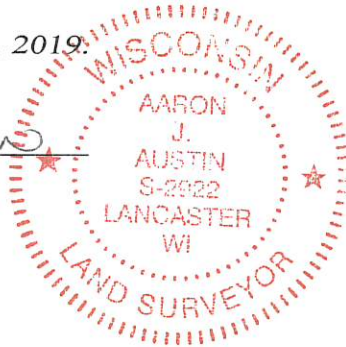
NOTE: This form is intended and designed to fulfill all requirements of the Wisconsin Administrative Code Chapter A-E 7.08, U.S. Public Land Survey Monument Record (3) (a) (b) (c) (d) (e) (f) (g) (h) (i).

CERTIFICATE: (i)

I, Aaron J. Austin, Wisconsin Professional Land Surveyor, do hereby certify that the corner location on this record was determined by me and/or under my direct supervision and that this U.S. Public Land Survey Monument Record is correct and complete to the best of my knowledge and belief.

Dated this 7th day of February, 2019.

Aaron J. Austin, S-2922



⊙ = CORNER LOCATION

Grant County Coordinates: NAD 83 (2011) Northing: 460,358.64 Easting: 837,539.86

HISTORY OF CORNER ESTABLISHMENT:

Original corner was set in 1833 by Lucius Lyon. Joel Barber tied to the corner on a survey dated 12/26/1876 filed in Book D, Page 5.

DESCRIPTION OF CORNER EVIDENCE FOUND: (b) (f) (g) (h)

I reset the corner using a stump and a tree with blazing found from the Barber Survey. This matches well to a tree found with blazing from Lyon's original notes. I set four witness monuments after I verified the Corner's location with G.P.S. and E.D.M. methods.

DESCRIPTION OF CORNER AND WITNESS MONUMENTS, references and accessories used to perpetuate the original or re-established location of this corner. (c) (d) (e) Witnesses to corner location Shane Austin. Drawn by Owen Austin.

LEGEND

- Section Corner—as designated
3/4" x 18" rebar set
Tree with Blaze Mark found
Existing stump
No monument set
Recorded as

SKETCH:

