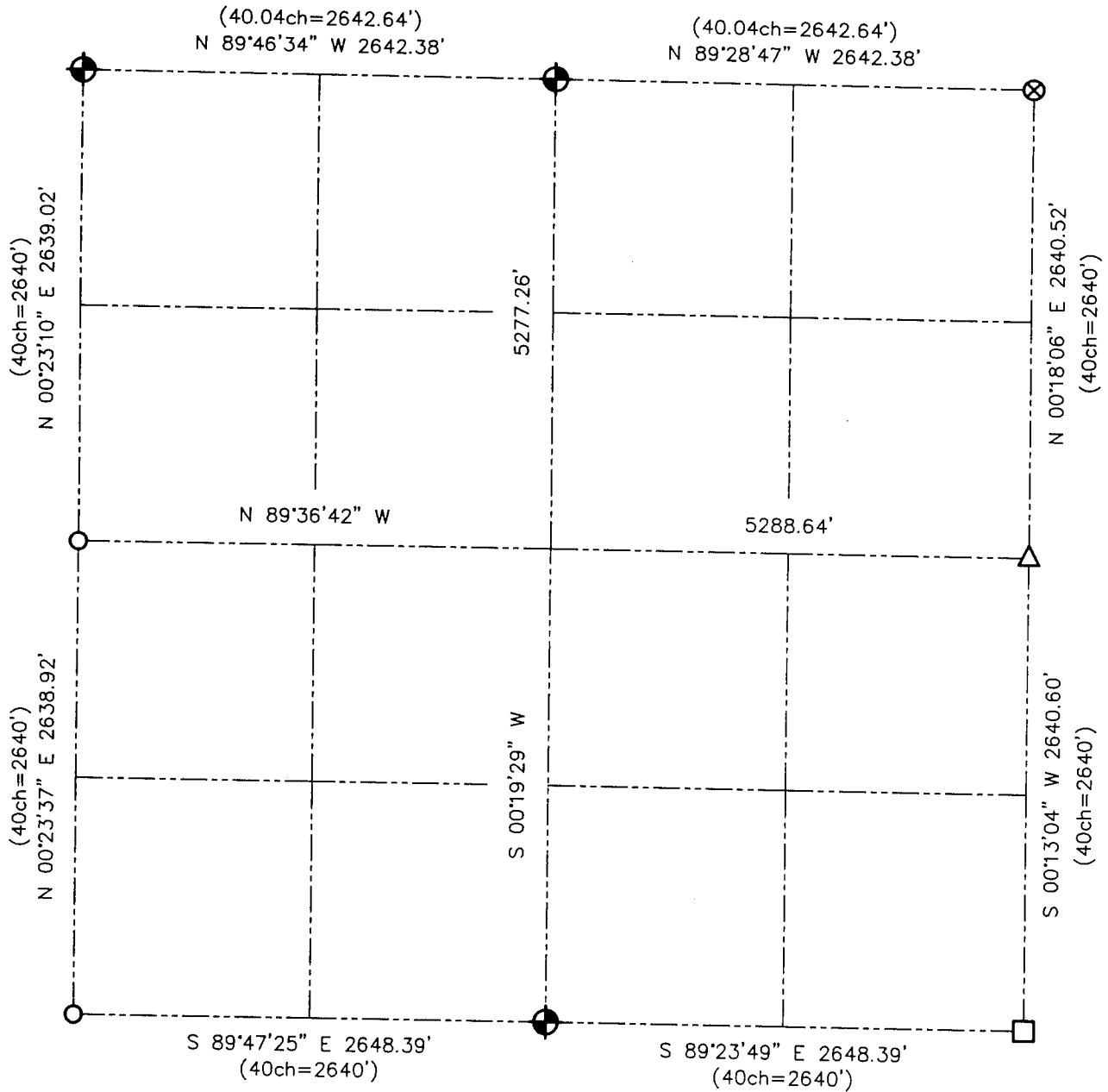
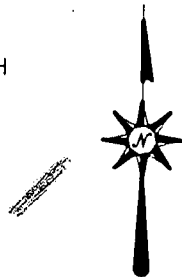


U.S. PUBLIC LAND SURVEY MONUMENT RECORD - GRANT COUNTY, WI
 Summary of Section 35, Town 2 North Range 1 West, Town of Smelser



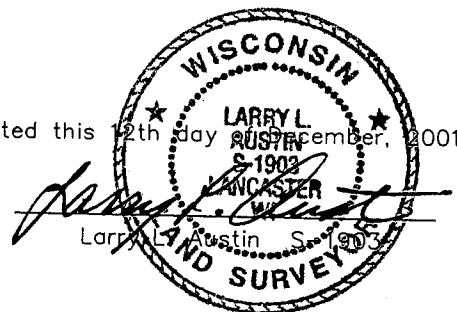
LEGEND

- NUMBER 8 x 30" REBAR SET WITH GRANT COUNTY ALUMINUM CAP
- NUMBER 10 IRON BAR FOUND
- NUMBER 6 IRON BAR FOUND
- NUMBER 7 REBAR FOUND WITH GRANT COUNTY ALUMINUM CAP
- 1" IRON PIPE FOUND



Relationship of all section corners to other section corners shall be shown hereon by bearing and distance or grid coordinates. Bearing reference shown below.

Dated this 12th day of December, 2001



Bearings referenced to the South line of the Southeast Quarter of Section 35, which is assumed to bear S 89°23'49" E.

SKETCH NOT TO SCALE

AUSTIN ENGINEERING, LLC

4211 HWY 81 EAST, LANCASTER, WI 53813
 PHONE 608-723-6363 FAX 608-723-6702

FIELDBOOK: SDR33, 21-22
 G: \T1NR1W\15
 C: \SWA\TIE\T2NR1W\35SUM

CREW: BS-SB-SA
 DRAWN BY: SW AUSTIN
 APPROVED: LL AUSTIN