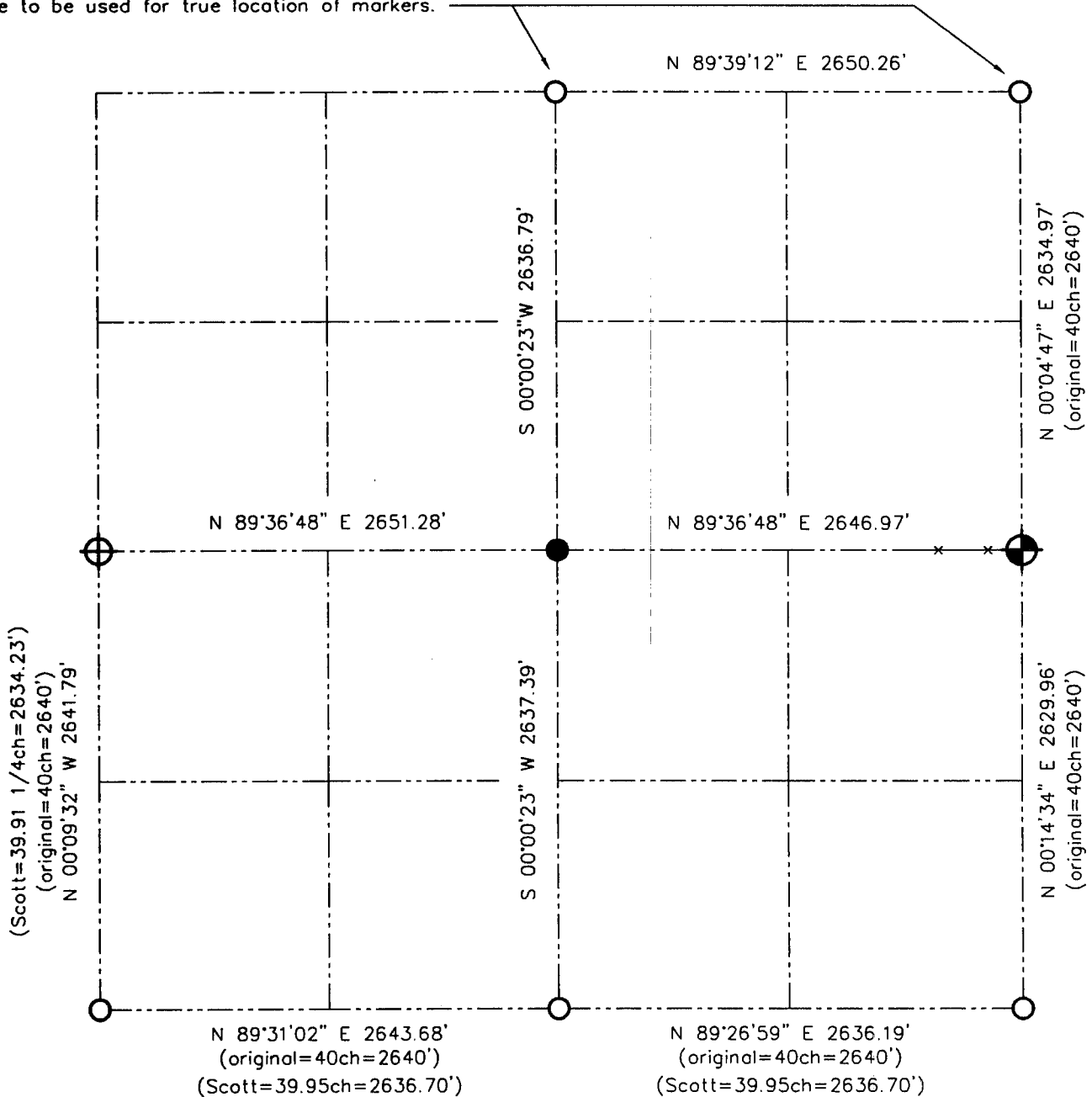


U.S. PUBLIC LAND SURVEY MONUMENT RECORD - GRANT COUNTY, WI

Summary of Section 33, Town 2 North Range 1 West, Town of Smelser

NOTE:

Both markers are below road surfaces. The Highway department set PK nails at the surface. Files are to be used for true location of markers.

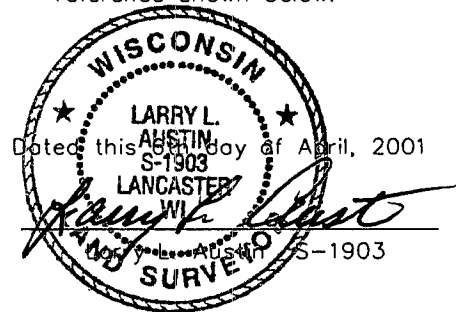


LEGEND

- NUMBER 8 x 30" REBAR SET WITH GRANT COUNTY ALUMINUM CAP
- EXISTING GRANT COUNTY ALUMINUM MONUMENT
- NUMBER 6 x 24" REBAR SET WITH YELLOW PLASTIC SURVEY CAP
- NUMBER 6 IRON BAR FOUND



Relationship of all section corners to other section corners shall be shown hereon by bearing and distance or grid coordinates. Bearing reference shown below.



Bearings referenced to the North line of the Northeast 1/4 of Section 33, which is assumed to bear N 89°39'12" E.

SKETCH NOT TO SCALE

AUSTIN ENGINEERING, LLC

4211 HWY 81 EAST, LANCASTER, WI 53813
PHONE 608-723-6363 FAX 608-723-6702

FIELDBOOK: SDR33, 2045
G: \T1NR1W\15
C: \SWA\TIE\T2NR1W\33SUM

CREW: BS-SB-SA-TF
DRAWN BY: SW AUSTIN
APPROVED: LL AUSTIN