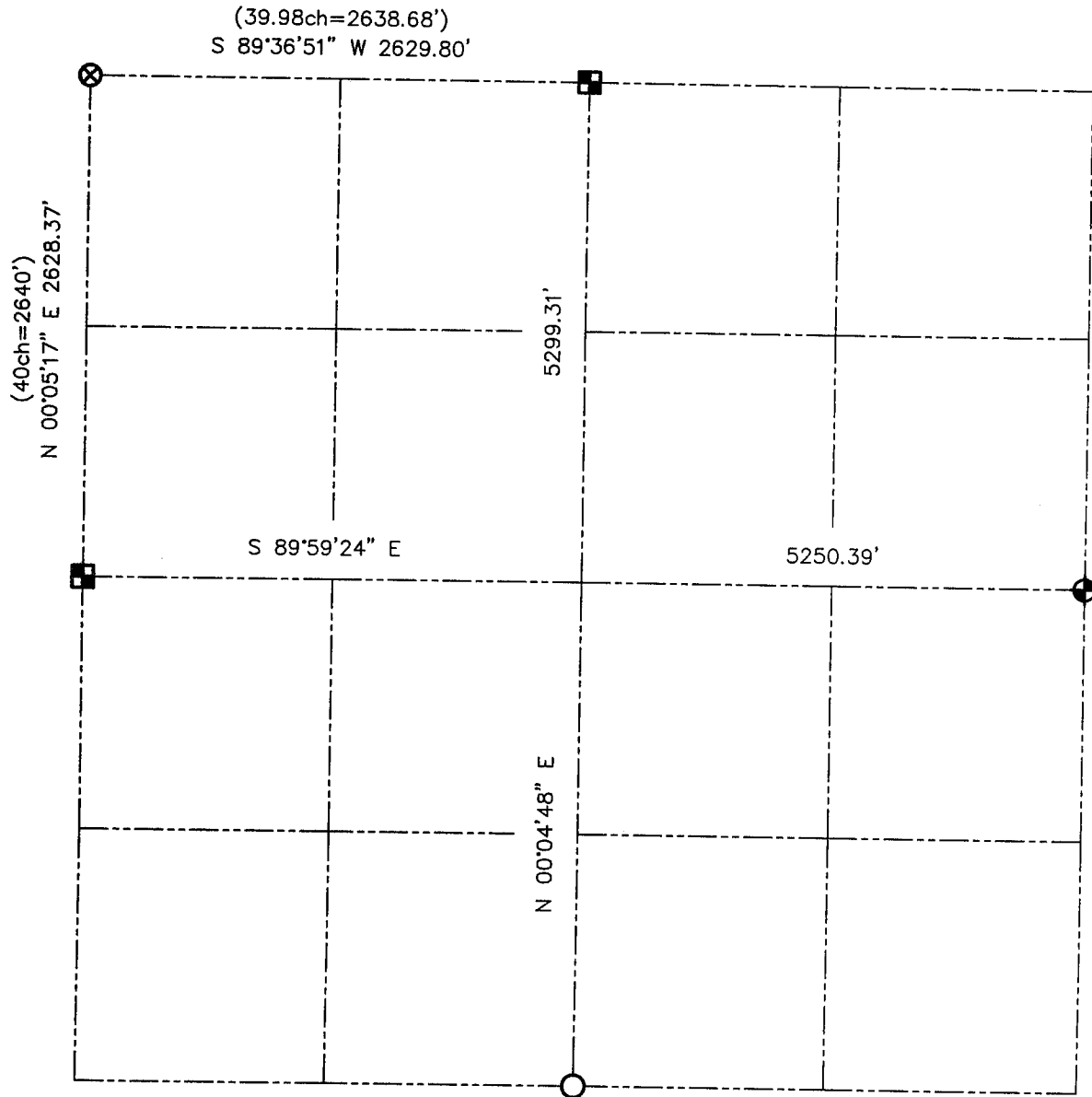


U.S. PUBLIC LAND SURVEY MONUMENT RECORD - GRANT COUNTY, WI
 Summary of Section 10, Town North 2 Range 1 West, Town of Smelser

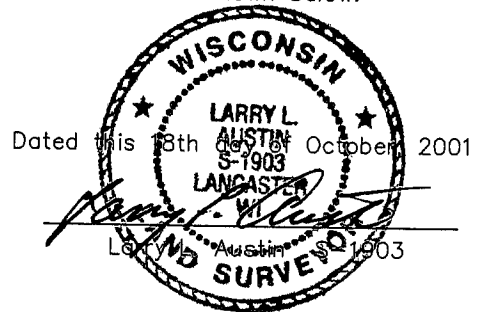


LEGEND

- NUMBER 8 x 30" REBAR SET WITH GRANT COUNTY ALUMINUM CAP
- NUMBER 6 REBAR FOUND WITH GRANT COUNTY ALUMINUM CAP
- ALUMINUM MONUMENT FOUND WITH GRANT COUNTY ALUMINUM CAP
- NUMBER 6 REBAR FOUND
- () RECORDED AS



Relationship of all section corners to other section corners shall be shown hereon by bearing and distance or grid coordinates. Bearing reference shown below.



Bearings referenced to the North-South 1/4 line of Section 10, which is assumed to bear S 00°04'48" E.

SKETCH NOT TO SCALE

AUSTIN ENGINEERING, LLC

4211 HWY 81 EAST, LANCASTER, WI 53813
 PHONE 608-723-6363 FAX 608-723-6702

FIELDBOOK: SDR33, 2114
 G: \T2NR1W\03A
 C: \SWA\TIE\T2NR1W\10SUM

CREW: BS-SB-SA-CA
 DRAWN BY: SW AUSTIN
 APPROVED: LL AUSTIN