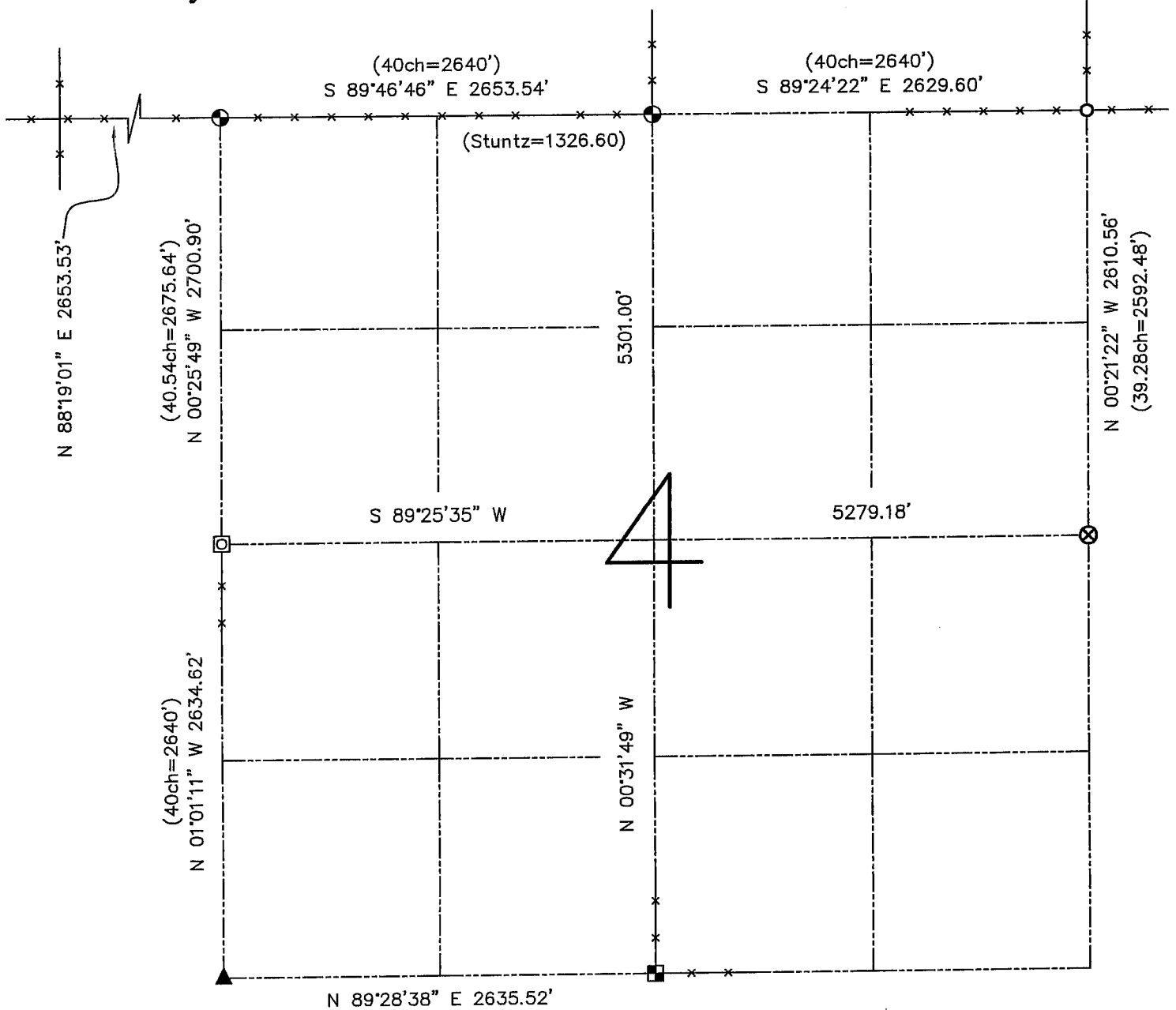


U.S. PUBLIC LAND SURVEY MONUMENT RECORD - GRANT COUNTY, WI

Summary of Section 4, Town 2 North, Range 1 West, Town of Smelser

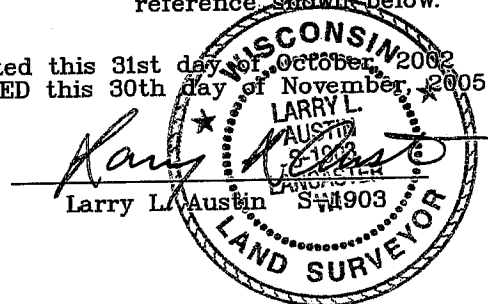


LEGEND

- ⊗ No. 6 rebar found with Grant County Aluminum Cap
- ⊙ No. 8 x 30" rebar set with Grant County Aluminum Cap - wt=2.67#/l.f.
- No. 6 rebar found
- Aluminum Monument found with Grant County Aluminum Cap
- ▲ 2" diameter iron pipe found
- No. 8 rebar found
- () Recorded as
- x-x- Approximate location of existing fence

Relationship of all section corners to other section corners shall be shown hereon by bearing and distance or grid coordinates. Bearing reference shown below.

Dated this 31st day of October, 2002
 REVISED this 30th day of November, 2005



Bearings referenced to the East-West Quarter line of this Section, which is assumed to bear S 89° 25' 35" W.

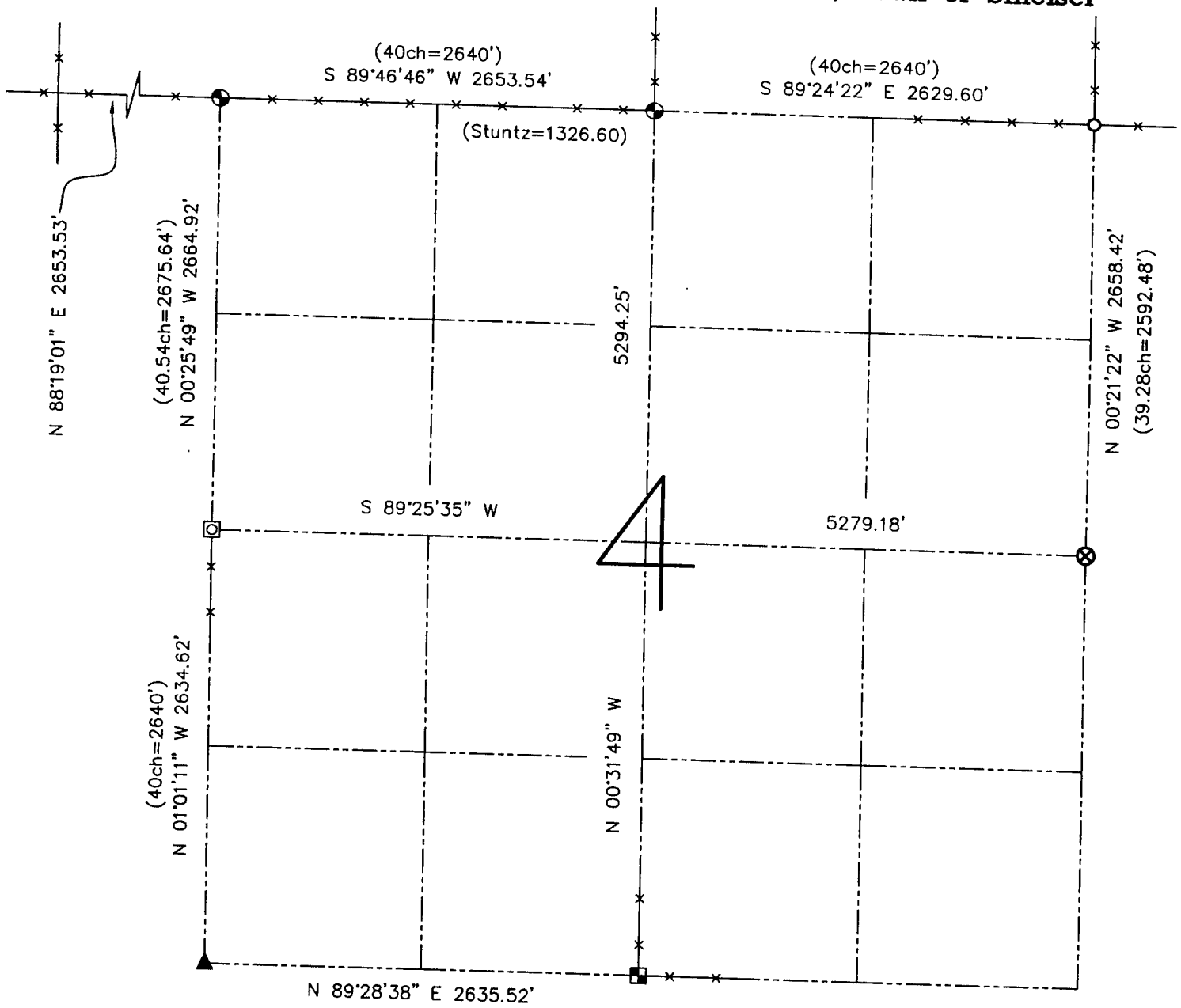
SKETCH NOT TO SCALE

AUSTIN ENGINEERING, LLC
 4211 HWY 81 EAST, LANCASTER, WI 53813
 PHONE 608-723-6363 FAX 608-723-6702

FIELDBOOK: SDR33, 9914
 G: \T2NR1W\04
 C: \SWA\TIE\T2NR1W\04SUM

JOB # 02S273
 DRAWN BY: SW AUSTIN
 APPROVED: LL AUSTIN

U.S. PUBLIC LAND SURVEY MONUMENT RECORD - GRANT COUNTY, WI
Summary of Section 4, Town 2 North, Range 1 West, Town of Smelser



LEGEND

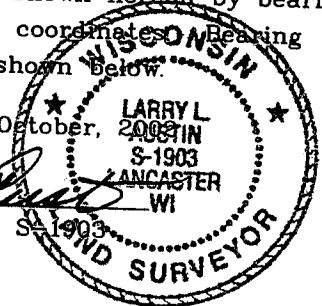
- ⊗ No. 6 rebar found with Grant County Aluminum Cap
- ⊕ No. 8 x 30" rebar set with Grant County Aluminum Cap - wt=2.67#/l.f.
- No. 6 rebar found
- Aluminum Monument found with Grant County Aluminum Cap
- ▲ 2" diameter iron pipe found
- ⊠ No. 8 rebar found
- () Recorded as

—x— Approximate location of existing fence

Relationship of all section corners to other section corners shall be shown hereon by bearing and distance or grid coordinates. Bearing reference shown below.

Dated this 31st day of October, 2007

Larry L. Austin
 Larry L. Austin S-1903



Bearings referenced to the East-West Quarter line of this Section, which is assumed to bear S 89° 25' 35" W.

SKETCH NOT TO SCALE

AUSTIN ENGINEERING, LLC
 4211 HWY 81 EAST, LANCASTER, WI 53813
 PHONE 608-723-6363 FAX 608-723-6702

FIELDBOOK: SDR33, 9914
 G: \T2NR1W\04
 C: \SWA\TIE\T2NR1W\04SUM

JOB # 02S273
 DRAWN BY: SW AUSTIN
 APPROVED: LL AUSTIN