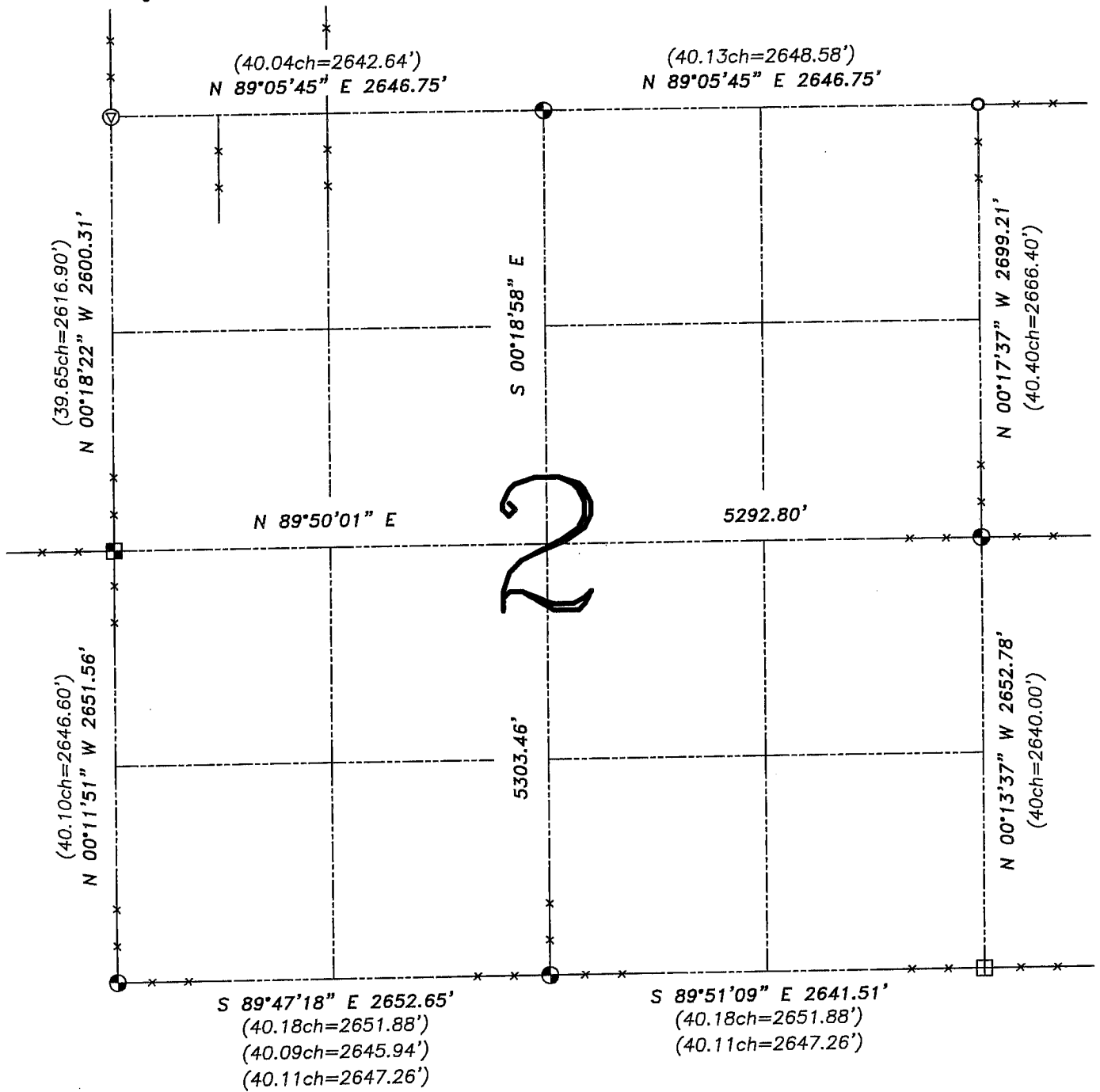


# U.S. PUBLIC LAND SURVEY MONUMENT RECORD – GRANT COUNTY, WI

## Summary of Section 02, Town 2 North, Range 1 West, Town of Smelser

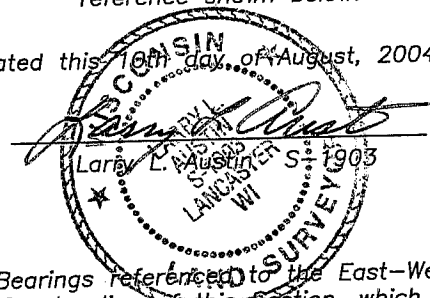


### LEGEND

- No. 8 x 30" rebar set with Grant County Aluminum Cap – wt=2.67#/l.f.
- No. 6 rebar found
- Aluminum Monument found with Grant County Aluminum Cap
- ▣ Bernsten Cast Aluminum Monument found
- ( ) Recorded as
- x—x— Approximate location of existing fence
- ⊙ Railroad spike found

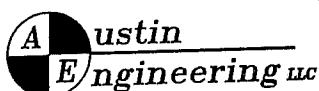
Relationship of all section corners to other section corners shall be shown hereon by bearing and distance or grid coordinates. Bearing reference shown below.

Dated this 10th day of August, 2004



Bearings referenced to the East-West Quarter line of this Section, which is assumed to bear N 89°50'01" E.

SKETCH NOT TO SCALE



4211 HWY 81 E, LANCASTER, WI 53813  
 PHONE 608-723-6363 FAX 608-723-6702

JOB NUMBER 04S148  
 FIELDBOOK: TSDR, 2406  
 G:\T3NR1W\23  
 H:\TIE\T2NR1W\02SUM

DRAWN BY: SW AUSTIN  
 APPROVED: LL AUSTIN