

# GRANT COUNTY CERTIFIED LAND CORNER

CORNER NO. 132

**CERTIFICATE:**

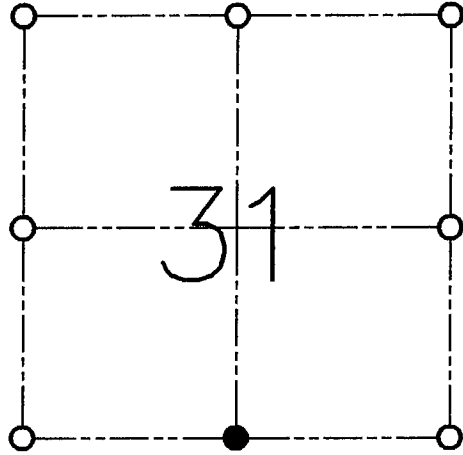
I, LARRY L. AUSTIN, DO HEREBY CERTIFY THAT ON TENTH DAY OF NOVEMBER, 1998, I FOUND OCCUPATIONAL EVIDENCE OF THE SOUTH 1/4 OF SECTION 31, TOWN 2 NORTH, RANGE 1 WEST, OF THE FOURTH PRINCIPAL MERIDIAN, AND I RE-ESTABLISHED SAID CORNER ACCORDING TO THE WISCONSIN STATUTES AS SHOWN AND DESCRIBED HEREON.

DATED THIS NINTH DAY OF JANUARY, 1999

*Larry L. Austin*  
LARRY L. AUSTIN S-1903



SEAL



● = CORNER LOCATION

SOUTH 1/4 OF SECTION 31  
T 2 N R 1 W  
TOWN OF SMELSER

**HISTORY OF ORIGINAL CORNER ESTABLISHMENT:**

CORNER SET IN 1832 BY LUCIUS LYON.

**DESCRIPTION OF CORNER EVIDENCE FOUND:**

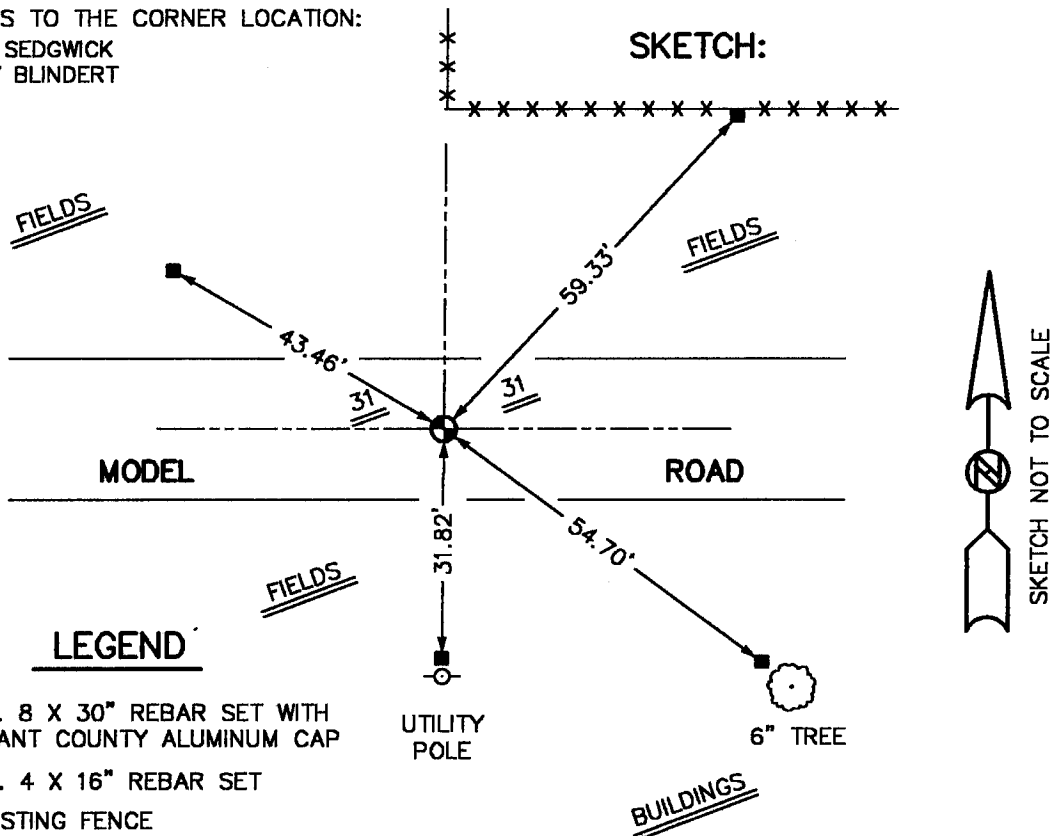
CORNER SET IN THE CENTERLINE OF THE EAST - WEST ROAD AND ONLINE WITH FENCE NORTH. THIS LOCATION FIT WELL WITH OTHER (OCCUPIED & MONUMENTED) CORNERS IN THE AREA. VERIFIED THIS LOCATION USING E.D.M. AND G.P.S. METHODS.

**DESCRIPTION OF CORNER AND WITNESS MONUMENTS, REFERENCES AND ACCESSORIES USED TO PERPETUATE THE ORIGINAL OR RE-ESTABLISHED LOCATION OF THIS CORNER:**

**WITNESS TO THE CORNER LOCATION:**

BOBBY SEDGWICK  
SHELBY BLINDERT

**SKETCH:**



SKETCH NOT TO SCALE

**LEGEND**

- NO. 8 X 30" REBAR SET WITH GRANT COUNTY ALUMINUM CAP
- NO. 4 X 16" REBAR SET
- \*—\*— EXISTING FENCE