

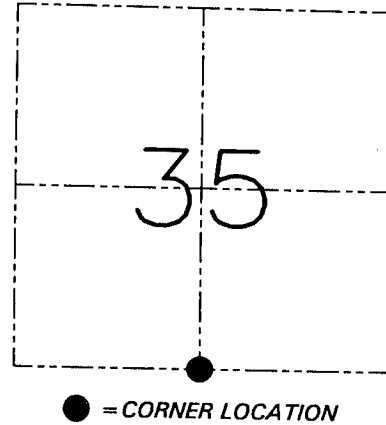
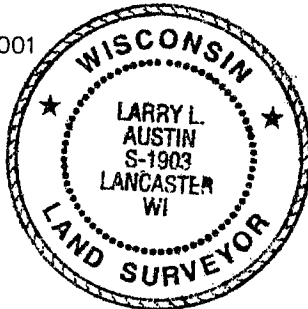
**U.S. PUBLIC LAND SURVEY MONUMENT RECORD - GRANT COUNTY, WI**  
 Section 35, Town 2 North Range 1 West, Town of Smelser

**CERTIFICATE**

I, Larry L. Austin, do hereby certify that the corner location on this record was determined by me and/or under my direct supervision and that this U.S. public land survey monument record is correct and complete to the best of my knowledge and belief.

Dated this 12th day of December, 2001

*Larry L. Austin*  
 Larry L. Austin S-1903



**HISTORY OF CORNER ESTABLISHMENT**

Corner was originally set in 1832 by Lucius Lyon. In 1994 I set the corner in the centerline for North-South and proportionately for East-West.

**DESCRIPTION OF CORNER EVIDENCE FOUND**

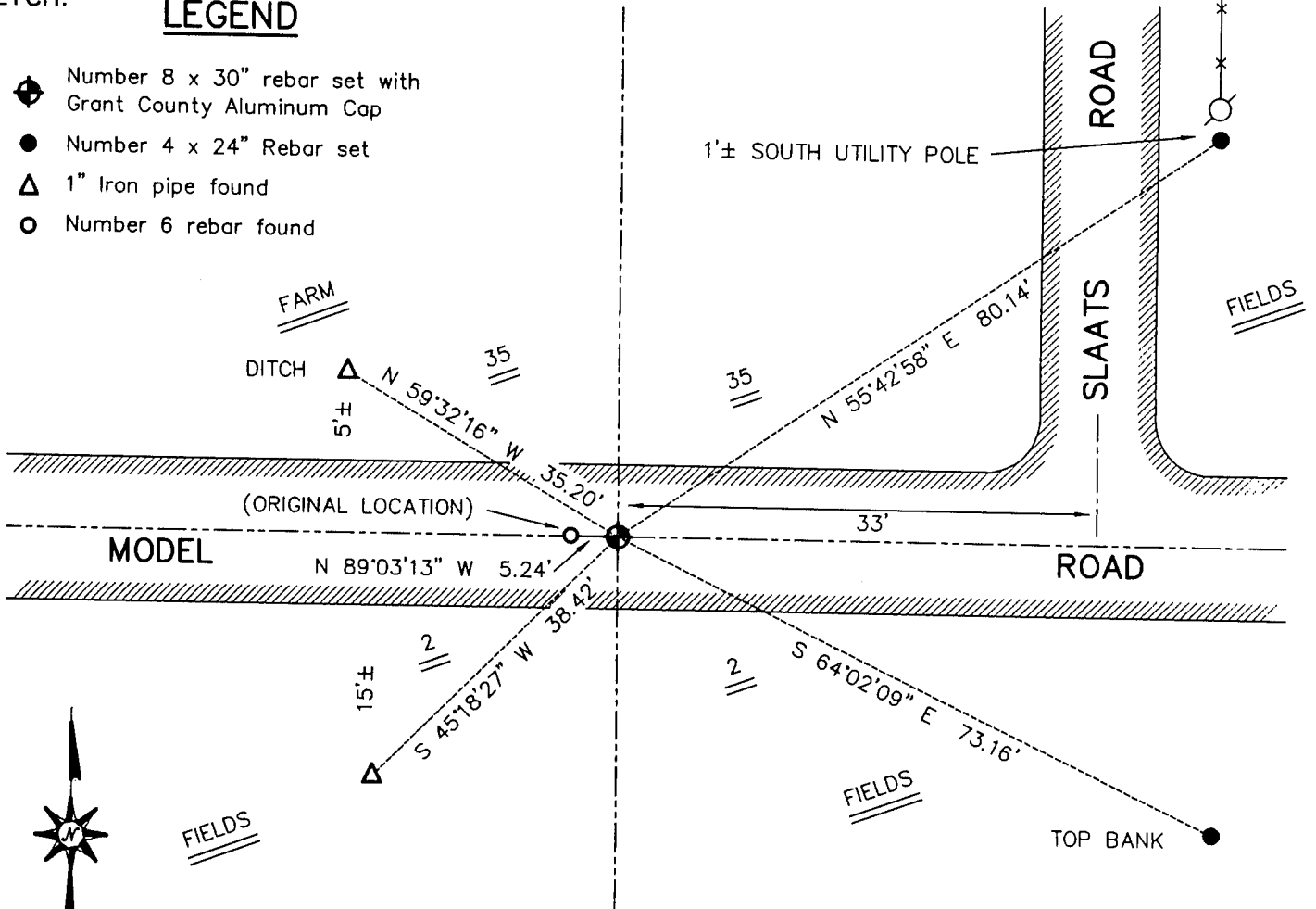
I found this location and it appears there was an error while measuring to the Southeast corner of Section 35. I reset the corner to the intended proportional location and verified this location using EDM & GPS methods.

**DESCRIPTION OF CORNER AND WITNESS MONUMENTS, references and accessories used to perpetuate the original or re-established location of this corner.** Witnesses to the corner location Bobby Sedgwick & Shane Austin & Shelby Blindert

SKETCH:

**LEGEND**

- ◆ Number 8 x 30" rebar set with Grant County Aluminum Cap
- Number 4 x 24" Rebar set
- △ 1" Iron pipe found
- Number 6 rebar found



\* SEE SECTION SUMMARY FOR \*  
 RELATIONSHIP TO AREA CORNERS

SKETCH NOT TO SCALE

**AUSTIN ENGINEERING, LLC**

4211 HWY 81 EAST, LANCASTER, WI 53813  
 PHONE 608-723-6363 FAX 608-723-6702

FIELDBOOK: SDR33, 2122  
 G: \T1NR1W\15  
 C: \SWA\TIE\T1NR1W\124  
 CREW: BS-SB-SA

DRAWN BY: SW AUSTIN  
 APPROVED: LL AUSTIN

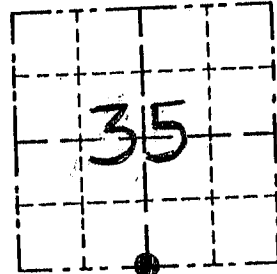
**CORNER NUMBER 124**

# GRANT COUNTY

## Survey Monument Record

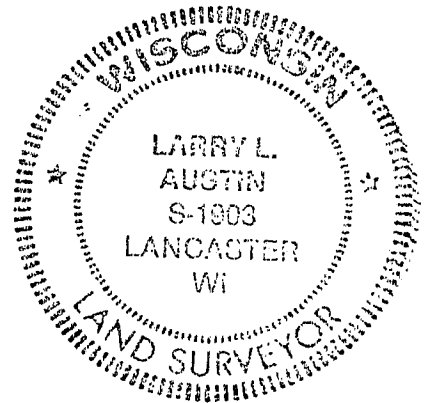
TYPE OF MONUMENT 3/4" x 24" IRON BAR SET  
 STATE PLANE COORDINATES: N \_\_\_\_\_  
 E \_\_\_\_\_  
 ELEVATION — M.S.L. DATUM: \_\_\_\_\_  
 THETA ANGLE: \_\_\_\_\_  
 FIELD BOOK: 9409  
 PAGE \_\_\_\_\_

CORNER NO. 124  
 SECTION 35  
 TOWN 2N  
 RANGE 1W  
S 1/4 COR



LOCATION  
 (Indicated by "•")

SEAL:



### BASIS FOR MONUMENT LOCATION

(Use reverse side if necessary)  
 Show info such as: History of corner, with reference to Vol. and pg., dates, surveyor; exact description of monument replaced; if location computed, by taped or EDM traverse; landowner, remarks, etc.

No RECORD OF COR. FD  
 SINCE ORIGINAL SURVEYS; SET  
 COR AT  $\frac{1}{2}$  OF RD FOR N-S LOCATION  
 $\frac{1}{2}$  PROPORTIONED TO SW COR SEC 35  
 $\frac{1}{4}$  TO SE COR OF SEC 36. VERIFIED  
 THE LOCATION BY EDM TRAVERSE OF  
 THE AREA.

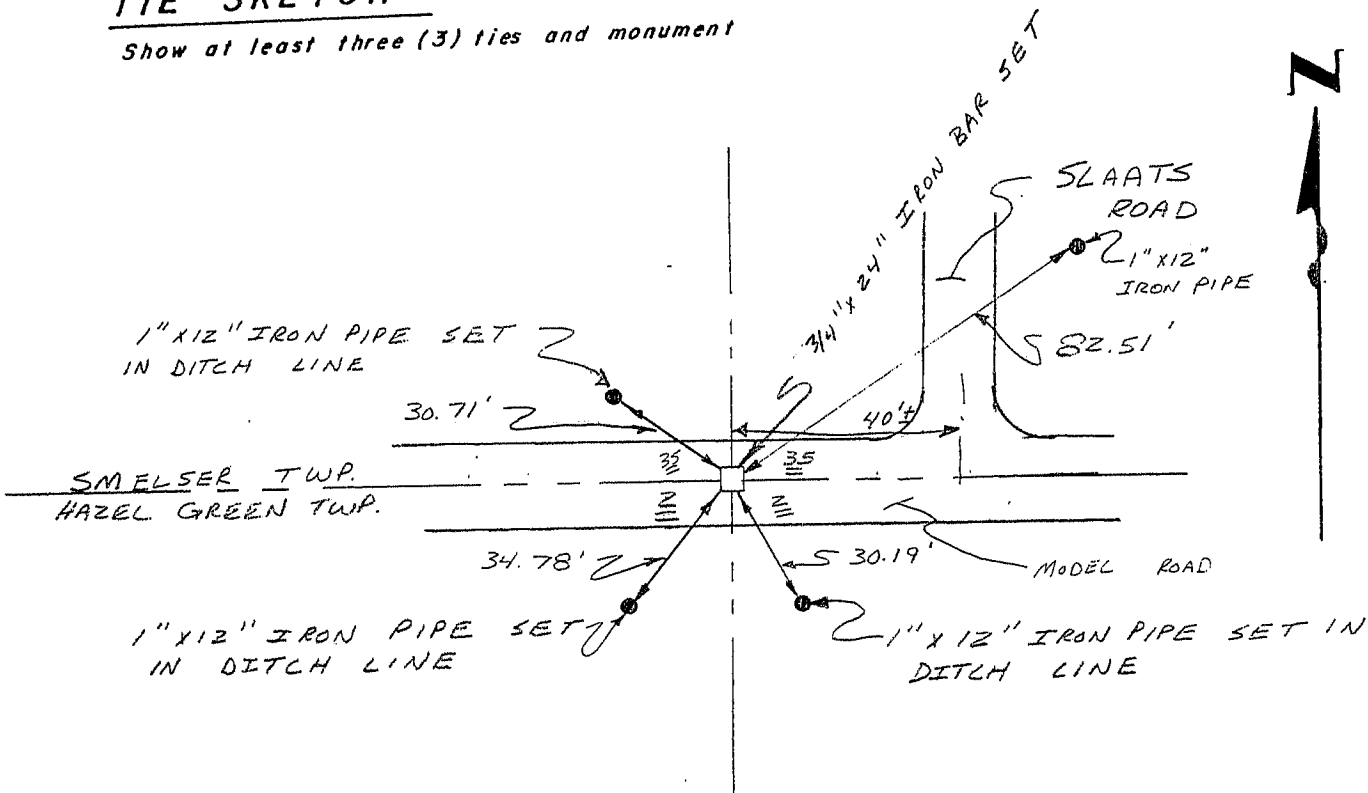
CERTIFIED CORRECT

*Larry L. Austin*  
 Registered Land Surveyor

DATE: 10/7/94

### TIE SKETCH

Show at least three (3) ties and monument



NO SCALE