

CERTIFIED LAND CORNER

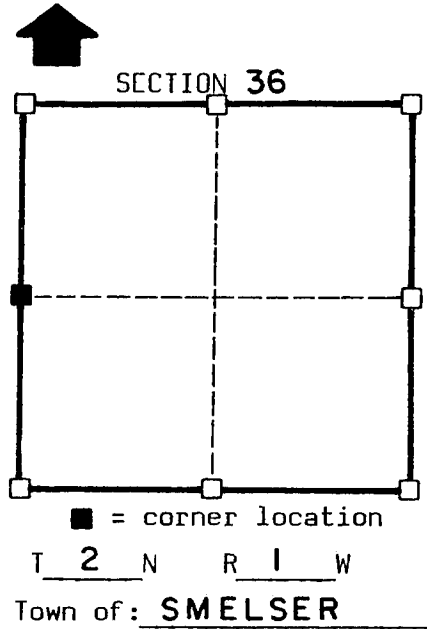
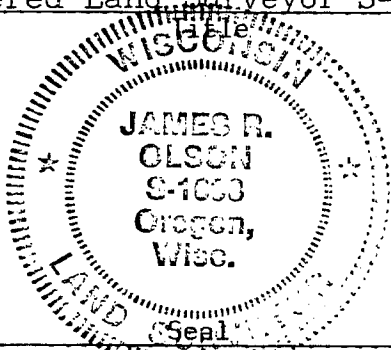
STATE OF WISCONSIN )  
 COUNTY OF GRANT ) S.S.

CERTIFICATE

I, James R. Olson, do hereby certify that on the 9 day of Dec. 1983, I found (~~evidence~~) (no evidence) of the West  $\frac{1}{4}$  corner of Section 36, T2 N, R1 W, Fourth Principal Meridian, and I re-established said corner according to the Wisconsin Statutes as shown and described hereon.

Dated this 21 day of Dec. 1983

James R. Olson  
 Registered Land Surveyor S-1698



History of original corner establishment:

Found no history of corner since original government survey.  
 Corner was reset by single proportionate measurement

Description of corner evidence found:

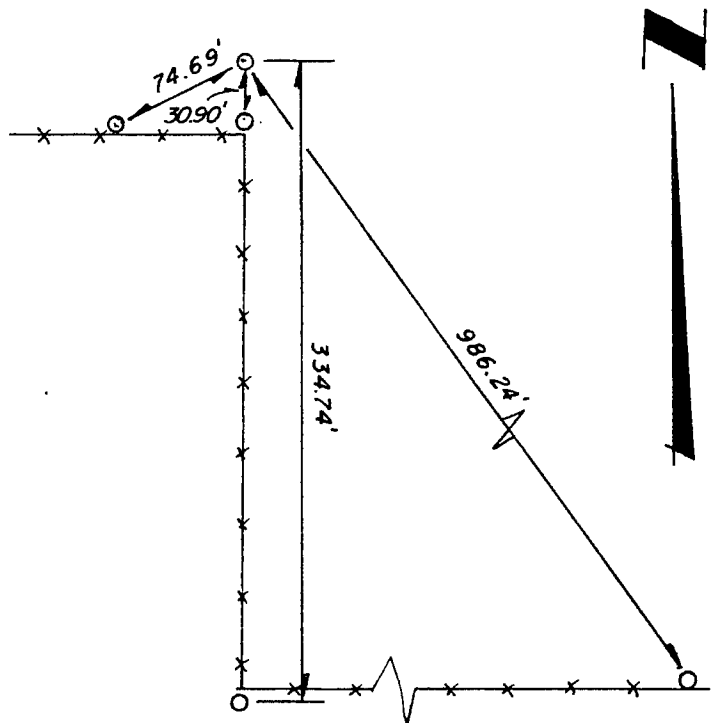
None.

Description of corner and witness monuments, references and accessories used to perpetuate the original or re-established location of this corner:

Witnesses to corner location:

James R. Olson  
Kevin Roder

Sketch:



Legend

- \*-x- Fenceline
- o 1"  $\varnothing$  Iron pipe

SURVEY CONTROL ORDER

Horizontal
Vertical
Corner
Control Sta. Name

WISCONSIN COORDINATE SYSTEM

Corner	East(X)	North(Y)	Elevation(Z)	Zone
Control Sta. Name				