

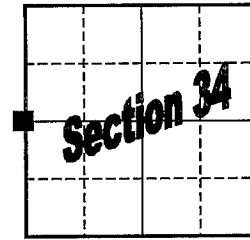
# GRANT COUNTY

## U.S. PUBLIC LAND SURVEY MONUMENT RECORD

West 1/4 Corner of Section 34  
T 2 N, R 1 W, Town of Smelser

Type of monument: Existing P.K. Nail (head broken off)

Location indicated on sketch - ■



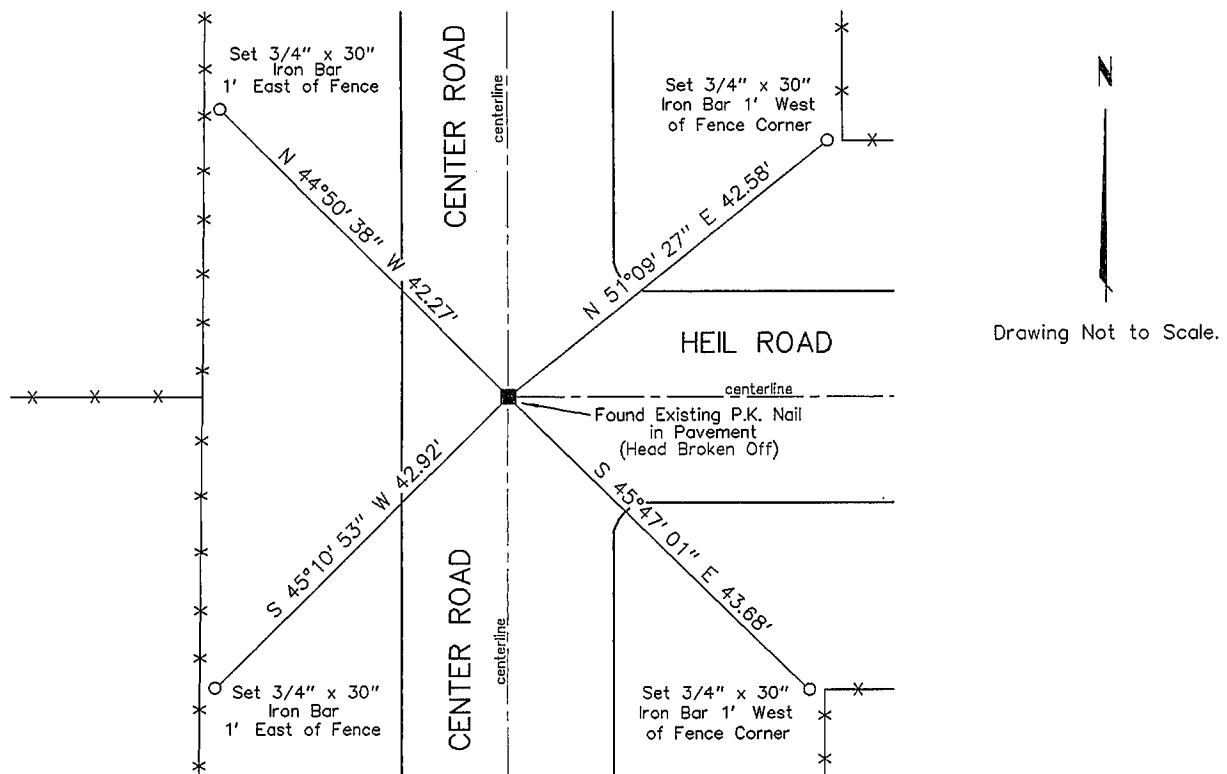
T 2 N, R 1 W

Describe and record evidence, monument evidence, occupational evidence, testimonial evidence or any other material evidence you considered, and whether the monument was found or placed.

Found existing P.K. nail with the head broken off. The nail was found at the intersection of centerlines North, South and East and in line with occupation to the West. Left the existing P.K. nail in place and set iron bar witness monuments as shown in the sketch below.

**Grant County Coordinates (survey feet): N=434271.96 E=879839.21**

Show a plan view drawing depicting the relevant monuments, providing reference ties to at least four witness monuments. Describe witness monuments. Show relationship to occupation.



Describe any material discrepancy between the location of the corner as restored or reestablished and the location of that corner as previously restored or reestablished by distance and direction. Show the discrepancy on the plan view drawing. Show the distances between the corner as restored or reestablished, and (1) the corner as previously restored or reestablished – and (2) to at least two of the witness monuments shown on the previous drawing.

N/A

Was the corner restored through acceptance of (1) an obliterated evidence location, (2) a found perpetuated location, or (3) an existent corner location.

(3) an existent corner location

Was the corner reestablished through lost corner proportionate methods? If so, show the method including the directions to other public land survey corners used as evidence or used for proportioning in determining the corner location.

No

Show the history of record in chronological order from Original Government Survey to present.

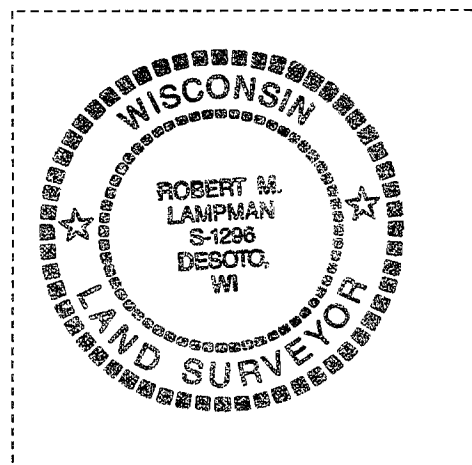
- (1) Original government corner established by Lucius Lyon, 1832.
- (2) Government corner is utilized as part of a section subdivision of Section 33 in 1844.
- (3) J.C.Scott calls for an existing stone at the corner in 1883. Scott's survey being located in Section 33.

I, Robert M. Lampman, do hereby certify that the corner location shown on this record was determined by me or under my direction and control and that this U.S. Public Land Survey Monument Record is correct to the best of my knowledge and belief.



Robert M. Lampman R.L.S. S-1296

2-16-01  
Date



**U.S. PUBLIC LAND SURVEY MONUMENT RECORD - GRANT COUNTY, WI**

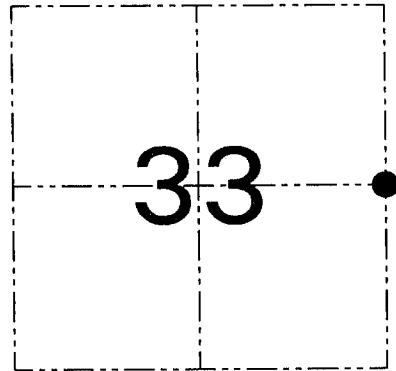
Section 33, Town 2 North Range 1 West, Town of Smelser

**CERTIFICATE**

I, Larry L. Austin, do hereby certify that the corner location on this record was determined by me and/or under my direct supervision and that this U.S. public land survey monument record is correct and complete to the best of my knowledge and belief.

Dated this 6th day of April, 2001

*Larry L. Austin*  
Larry L. Austin S-1903



● = CORNER LOCATION

**HISTORY OF CORNER ESTABLISHMENT**

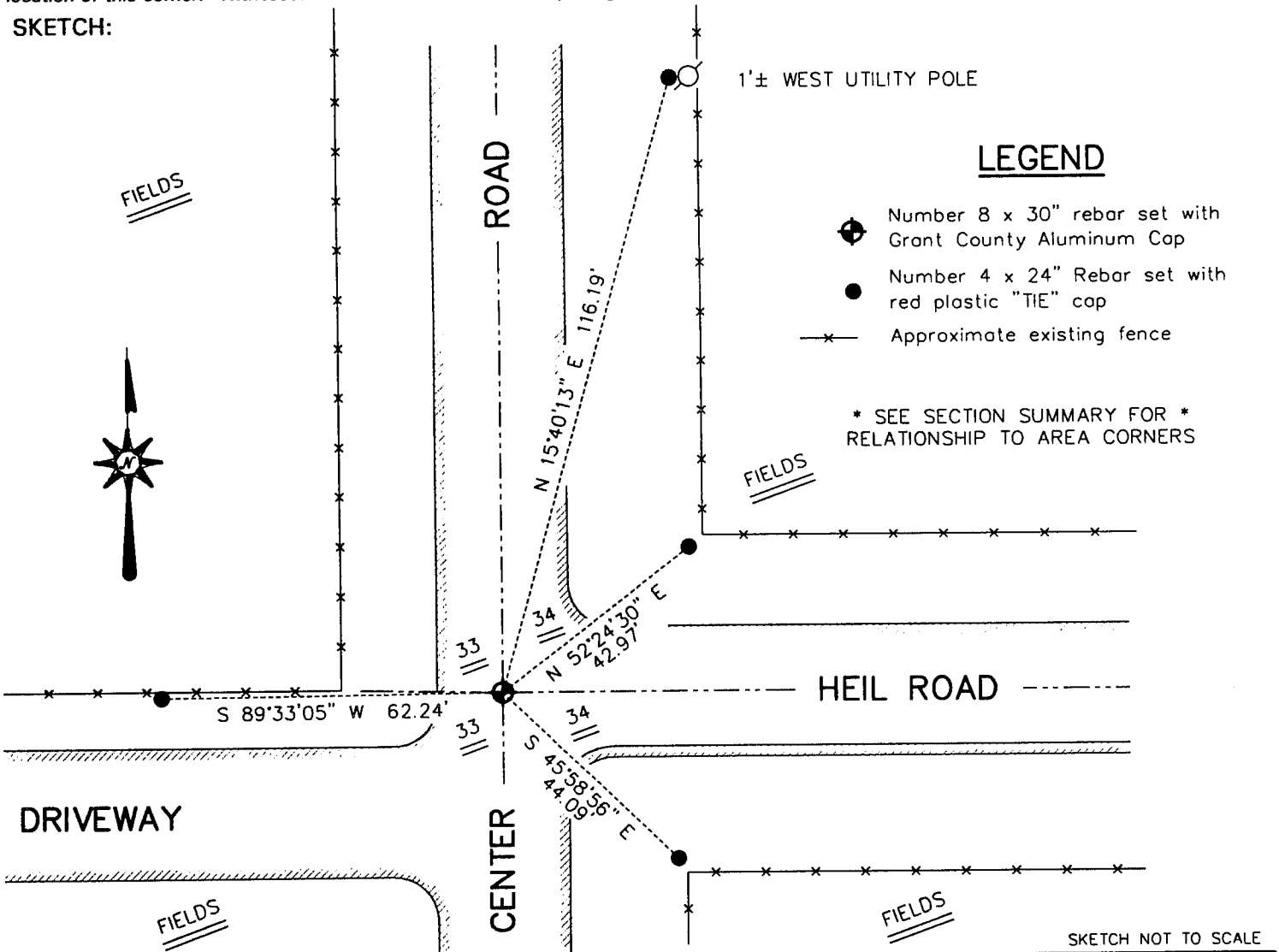
Corner was originally set in 1832 by Lucius Lyon.  
In 1883 J.C. Scott found a stone and accepted it's location.

**DESCRIPTION OF CORNER EVIDENCE FOUND**

The stone was not found do to road surfaces. I did find an occupied location of centerline road North-South and fence West. I accepted this location as the best available evidence to the location of the corner. Verified this location using EDM & GPS methods.

**DESCRIPTION OF CORNER AND WITNESS MONUMENTS, references and accessories used to perpetuate the original or re-established location of this corner. Witnesses to the corner location Bobby Sedgwick & Shelby Blindert & Tim Fauver.**

SKETCH:



**AUSTIN ENGINEERING, LLC**  
4211 HWY 81 EAST, LANCASTER, WI 53813  
PHONE 608-723-6363 FAX 608-723-6702

FIELDBOOK: SDR33, 2045  
G: \T1NR1W\15  
C: \SWA\TIE\T2NR1W\117  
CREW: BS-SB-SA-TF

DRAWN BY: SW AUSTIN  
APPROVED: LL AUSTIN

**CORNER NUMBER 117**