

GRANT COUNTY CERTIFIED LAND CORNER

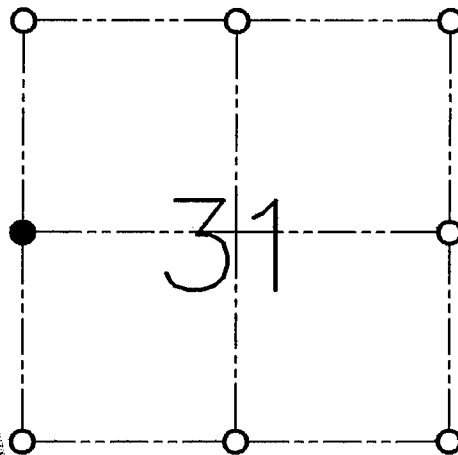
CORNER NO. 114

CERTIFICATE:

I, LARRY L. AUSTIN, DO HEREBY CERTIFY THAT ON TENTH DAY OF NOVEMBER, 1998, I FOUND OCCUPATIONAL EVIDENCE OF THE WEST 1/4 OF SECTION 31, TOWN 2 NORTH, RANGE 2 WEST, OF THE FOURTH PRINCIPAL MERIDIAN, AND I RE-ESTABLISHED SAID CORNER ACCORDING TO THE WISCONSIN STATUTES AS SHOWN AND DESCRIBED HEREON.

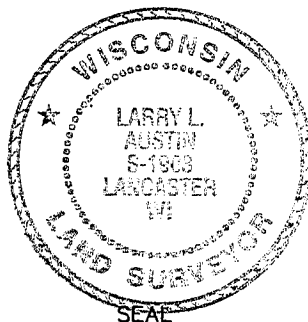
DATED THIS NINTH DAY OF JANUARY, 1999

Larry L. Austin
LARRY L. AUSTIN S-1903



● = CORNER LOCATION

**WEST 1/4 OF SECTION 31
T 2 N R 1 W
TOWN OF SMELSER**



HISTORY OF ORIGINAL CORNER ESTABLISHMENT:

CORNER SET IN 1832 BY LUCIUS LYON.

DESCRIPTION OF CORNER EVIDENCE FOUND:

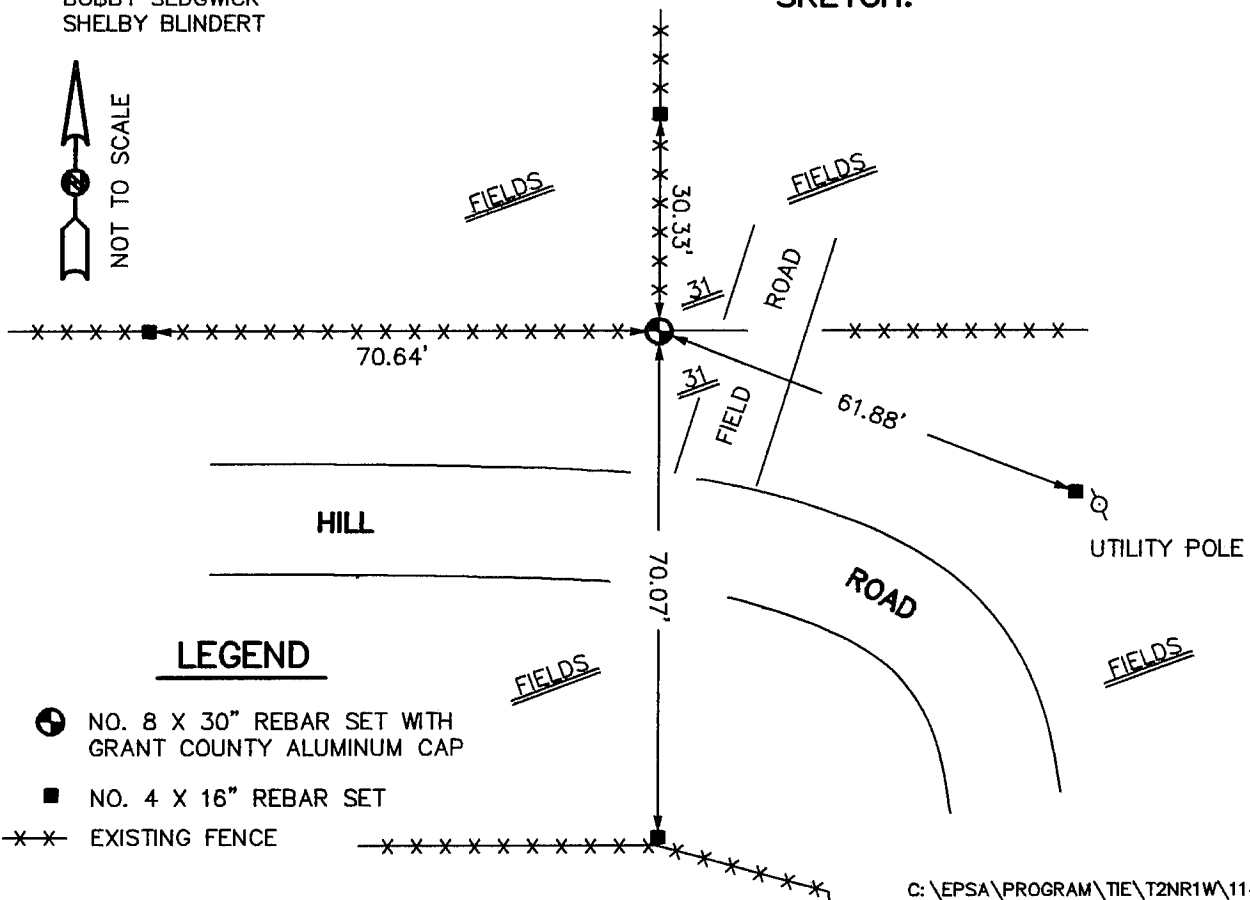
I FOUND AN OCCUPIED FENCE CORNER AT THIS LOCATION THAT FIT WELL WITH OTHER (MONUMENTED & OCCUPIED) CORNERS IN THE AREA. VERIFIED THIS LOCATION USING E.D.M. AND G.P.S. METHODS.

DESCRIPTION OF CORNER AND WITNESS MONUMENTS, REFERENCES AND ACCESSORIES USED TO PERPETUATE THE ORIGINAL OR RE-ESTABLISHED LOCATION OF THIS CORNER:

WITNESS TO THE CORNER LOCATION:

BOBBY SEDGWICK
SHELBY BLINDERT

SKETCH:



LEGEND

- NO. 8 X 30" REBAR SET WITH GRANT COUNTY ALUMINUM CAP
- NO. 4 X 16" REBAR SET

—x—x— EXISTING FENCE