

2111a

# U.S. PUBLIC LAND SURVEY MONUMENT RECORD - GRANT COUNTY, WI

Section 31, Town 2 North Range 1 West, Town of Smelser (a)

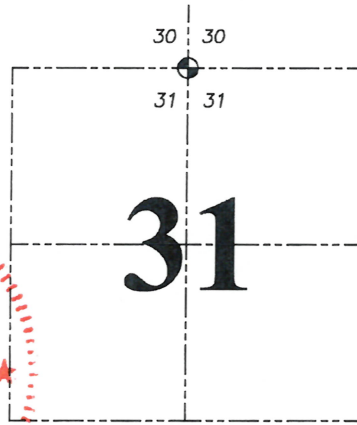
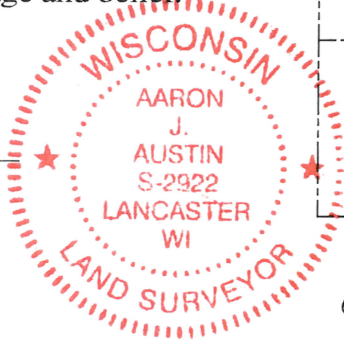
NOTE: This form is intended and designed to fulfill all requirements of the Wisconsin Administrative Code Chapter A-E 7.08, U.S. Public Land Survey Monument Record (3) (a) (b) (c) (d) (e) (f) (g) (h) (i).

**CERTIFICATE: (i)**

I, Aaron J. Austin, Wisconsin Professional Land Surveyor, do hereby certify that the corner location on this record was determined by me and/or under my direct supervision and that this U.S. Public Land Survey Monument Record is correct and complete to the best of my knowledge and belief.

Dated this 13th day of June, 2025.

*Aaron J. Austin*  
Aaron J. Austin, S-2922



Grant County Coordinates:  
NAD 83 (2011)  
Northing: 436,766.31  
Easting: 866,605.61

⊙ = CORNER LOCATION

HISTORY OF CORNER ESTABLISHMENT:

Original corner was set in 1832 by Lucius Lyon.  
Larry Austin set an 1" Rebar with a Grant County Aluminum Cap and prepared a Survey Monument Record dated 1/9/1999.  
Aaron Austin found a P.K. Nail and prepared a Survey Monument Record dated 5-22-2020.

DESCRIPTION OF CORNER EVIDENCE FOUND: (b) (f) (g) (h)

I found and measured a P.K. Nail prior to the road construction of County Highway "HH". After the road construction I set a 1/2" x 4 3/4" Steel Cotton Gin Spike in the same location. I found four witness corners. I verified the Monument's location with G.P.S. and E.D.M. methods.

DESCRIPTION OF CORNER AND WITNESS MONUMENTS, references and accessories used to perpetuate the original or re-established location of this corner. (c) (d) (e)

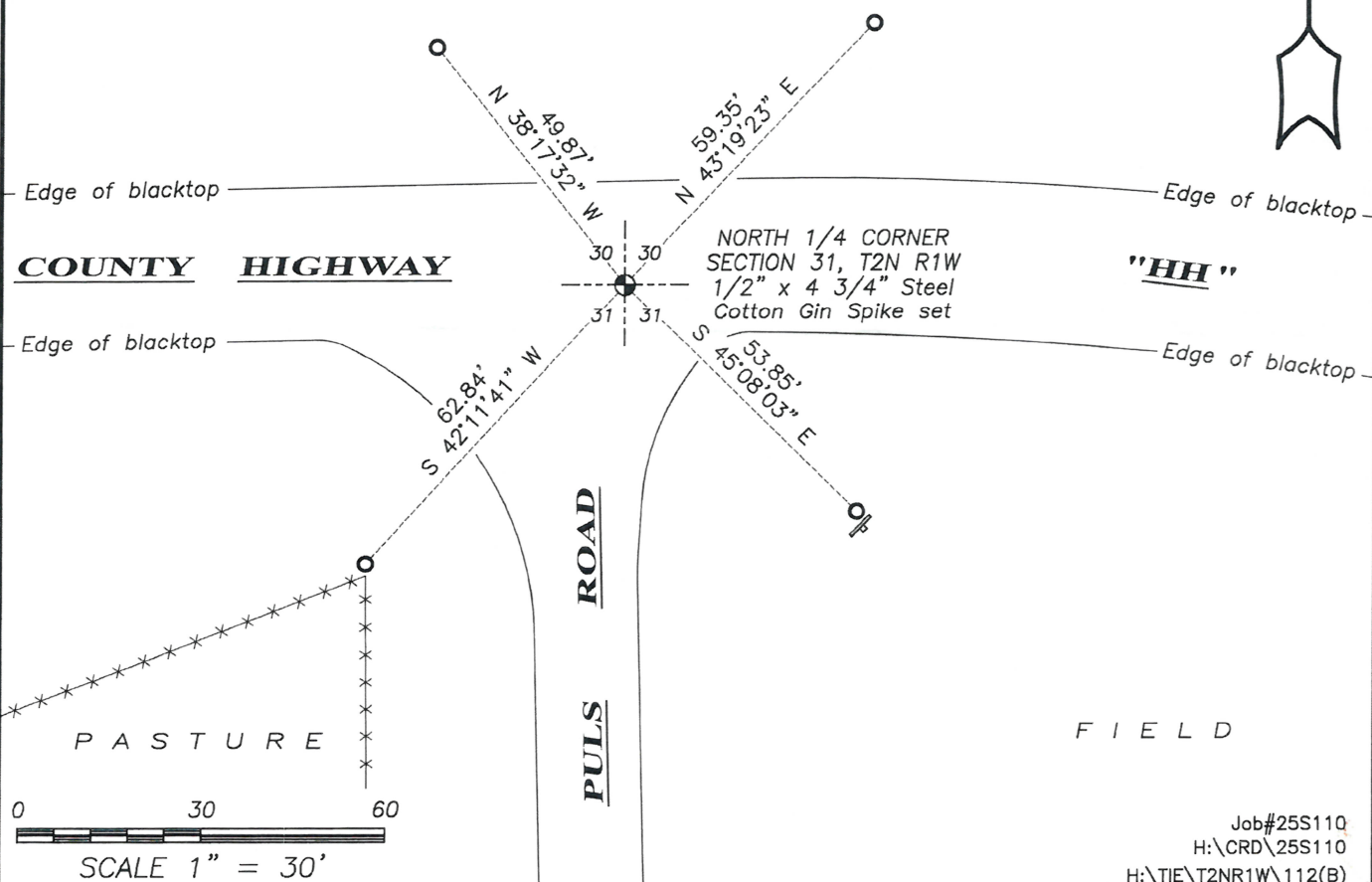
Witnesses to corner location Shane Austin, Owen Austin.  
Drawn by Owen Austin

SKETCH:

## LEGEND

- ⊙ Section Corner—as designated
- 3/4" rebar found
- x-x-x- Existing fence
- ⊞ Survey marker sign

Y A R D

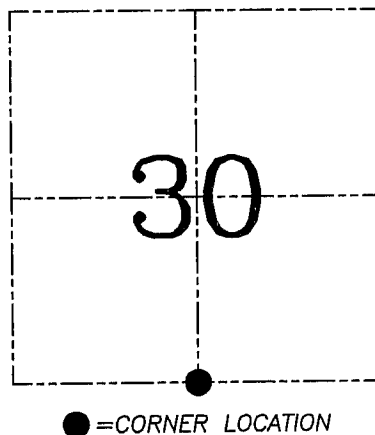
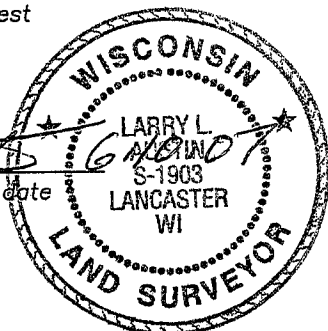


**U.S. PUBLIC LAND SURVEY MONUMENT RECORD – GRANT COUNTY, WI**  
**Section 30, Town 2 North Range 2 West, Town of Paris**

CERTIFICATE

I, Larry L. Austin, do hereby certify that the corner location on this record was determined by me and/or under my direct supervision and that this U.S. public land survey monument record is correct and complete to the best of my knowledge and belief.

*Larry L. Austin*  
 Larry L. Austin, S-1903



HISTORY OF CORNER ESTABLISHMENT

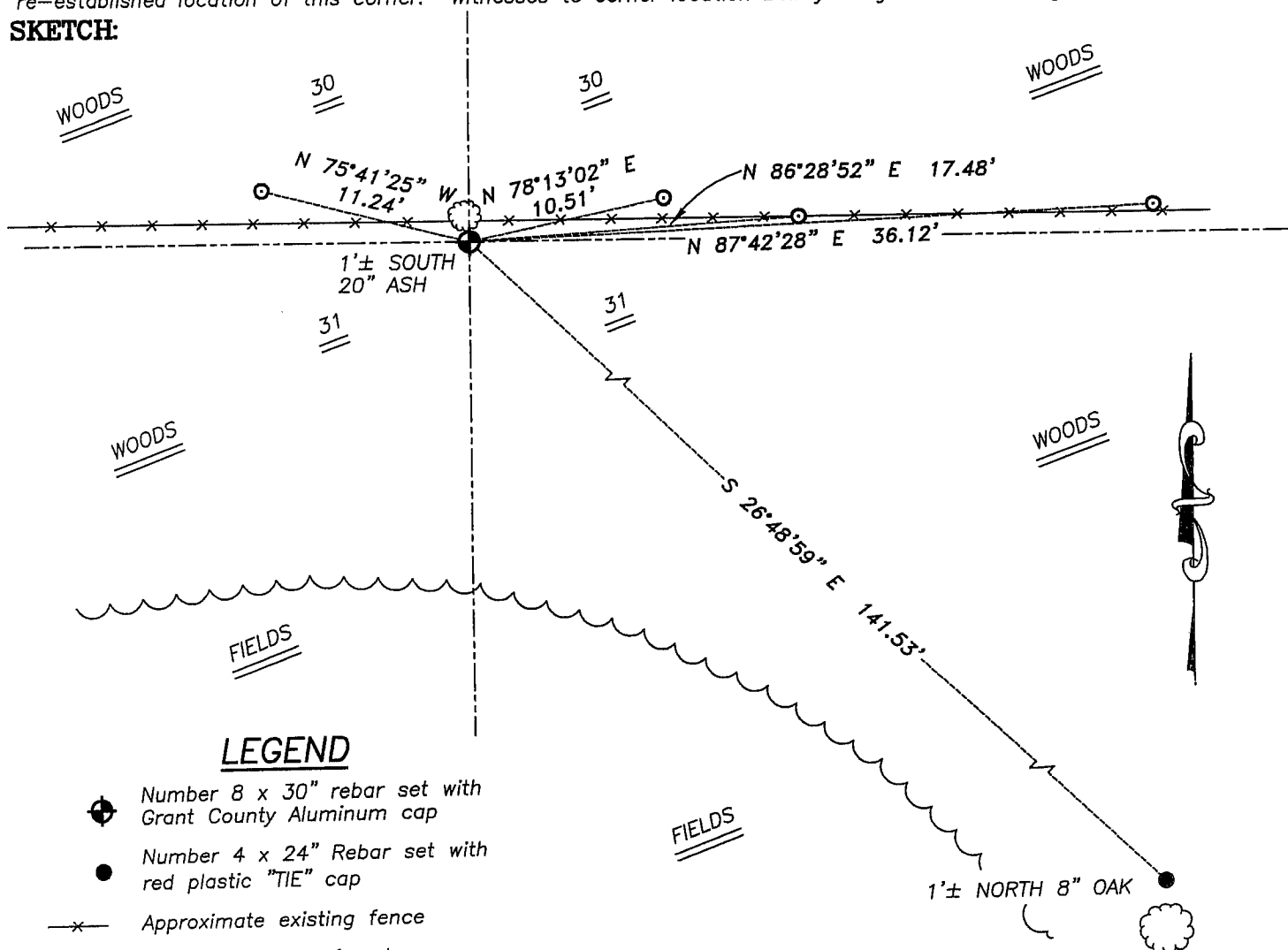
Corner was originally set in 1833 by Lyon. In 1941 U.S. Army Corps of Engineers reset the corner. In 1984 Midstate Associates Inc. tied to the corner. In 1996 I filed a tie sheet on the corner.

DESCRIPTION OF CORNER EVIDENCE FOUND

I reset the U.S. Army Corps of Engineers location. This location fit adjoining monumented and occupied corners. Verified this location using EDM & GPS methods.

DESCRIPTION OF CORNER AND WITNESS MONUMENTS, references and accessories used to perpetuate the original or re-established location of this corner. Witnesses to corner location Bobby Sedgwick & Brad Digman & Shane Austin

**SKETCH:**



**LEGEND**

- ⊕ Number 8 x 30" rebar set with Grant County Aluminum cap
- Number 4 x 24" Rebar set with red plastic "TIE" cap
- x— Approximate existing fence
- ⊙ Number 4 Rebar found

SKETCH NOT TO SCALE



**Austin Engineering LLC**

4211 HWY 81 E, LANCASTER, WI 53813  
 PHONE 608-723-6363 FAX 608-723-6702

JOB NUMBER 07S031  
 FIELDBOOK: TDSR, 2700  
 G:\T2NR2W\23  
 H:\TIE\T2NR2W\112

DRAWN BY: SW AUSTIN  
 APPROVED: LL AUSTIN

# ANT COUNTY

## Survey Monument Record

TYPE OF MONUMENT 3/4" X 24" IRON BAR SET

STATE PLANE COORDINATES: N \_\_\_\_\_  
E \_\_\_\_\_

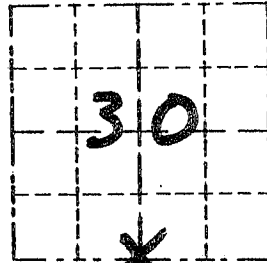
ELEVATION — M.S.L. DATUM: \_\_\_\_\_

THETA ANGLE: \_\_\_\_\_

FIELD BOOK: 96-12

PAGE (16)

CORNER NO. 112  
SECTION 30  
TOWN 2N  
RANGE 2W



LOCATION  
(Indicated by "X")

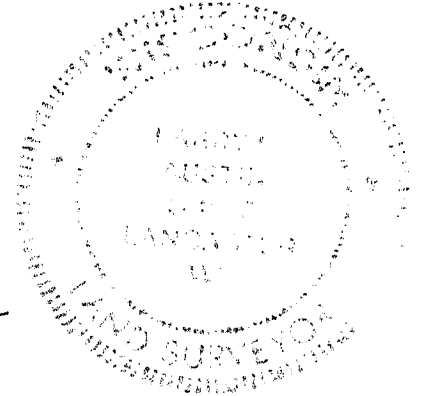


### BASIS FOR MONUMENT LOCATION

(Use reverse side if necessary)

CORNER SET IN 1833 BY  
LUCIUS LYON. ORIGINAL  
BEARING TREES WERE  
UNRECOVERABLE. NO RECORD OF  
CORNER FOUND SINCE ORIGINAL  
SURVEYS. CORNER SET IN EXISTING  
FENCE FOR EAST/WEST LOCATION,  
NORTH/SOUTH LOCATION ESTABLISHED  
BY BEING ONLINE BETWEEN SOUTHEAST  
CORNER AND THE SOUTH WEST CORNER.  
VERIFIED ITS LOCATION USING EDM  
TRAVERSE.

SEAL:



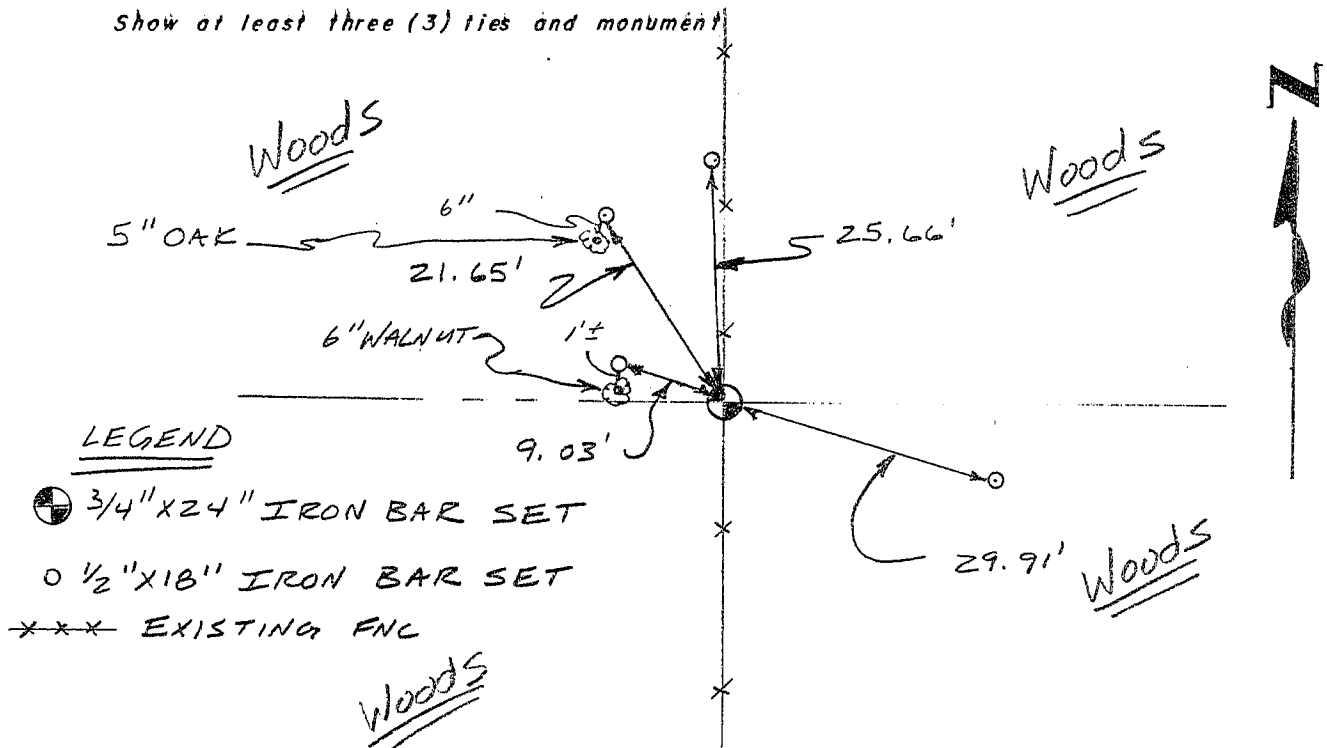
CERTIFIED CORRECT

Randy A. Rust  
Registered Land Surveyor

DATE: 8/29/96

### TIE SKETCH

Show at least three (3) ties and monument



### LEGEND

- ⊕ 3/4" X 24" IRON BAR SET
- 1/2" X 18" IRON BAR SET
- \*\*\* EXISTING FNC



No SCALE