

U.S. PUBLIC LAND SURVEY MONUMENT RECORD - GRANT COUNTY, WI

Section 30, Town 2 North Range 1 West, Town of Smelser (a)

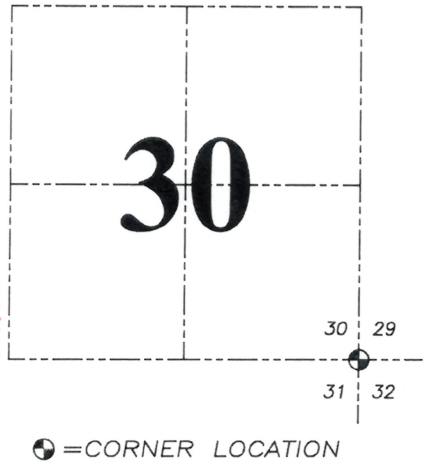
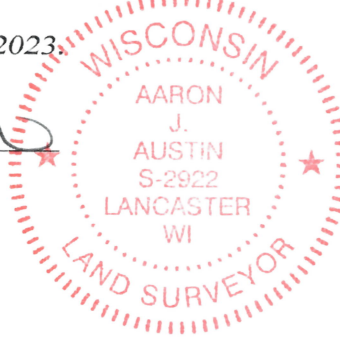
NOTE: This form is intended and designed to fulfill all requirements of the Wisconsin Administrative Code Chapter A-E 7.08, U.S. Public Land Survey Monument Record (3) (a) (b) (c) (d) (e) (f) (g) (h) (i).

CERTIFICATE: (i)

I, Aaron J. Austin, Wisconsin Professional Land Surveyor, do hereby certify that the corner location on this record was determined by me and/or under my direct supervision and that this U.S. Public Land Survey Monument Record is correct and complete to the best of my knowledge and belief.

Dated this 20th day of October, 2023.

Aaron J. Austin
Aaron J. Austin, S-2922



Grant County Coordinates:
NAD 83 (2011)
Northing: 436,809.35
Easting: 869,247.19

HISTORY OF CORNER ESTABLISHMENT:

Original corner was set in 1832 by Lucius Lyon.
Larry Austin found 1 1/4" Rebar and prepared a Survey Monument Record dated 2-4-1995.
Larry Austin found a P.K. Nail and prepared a Survey Monument Record dated 2-13-2008.

DESCRIPTION OF CORNER EVIDENCE FOUND: (b) (f) (g) (h)

I found and measured a P.K. Nail before road construction of County Highway "H". I set a 1/2" x 4 3/4" Steel Cotton Gin Spike after construction in the same location. I found six witness corners after I verified the Monument's location with G.P.S. and E.D.M. methods.

DESCRIPTION OF CORNER AND WITNESS MONUMENTS, references and accessories used to perpetuate the original or re-established location of this corner. (c) (d) (e)

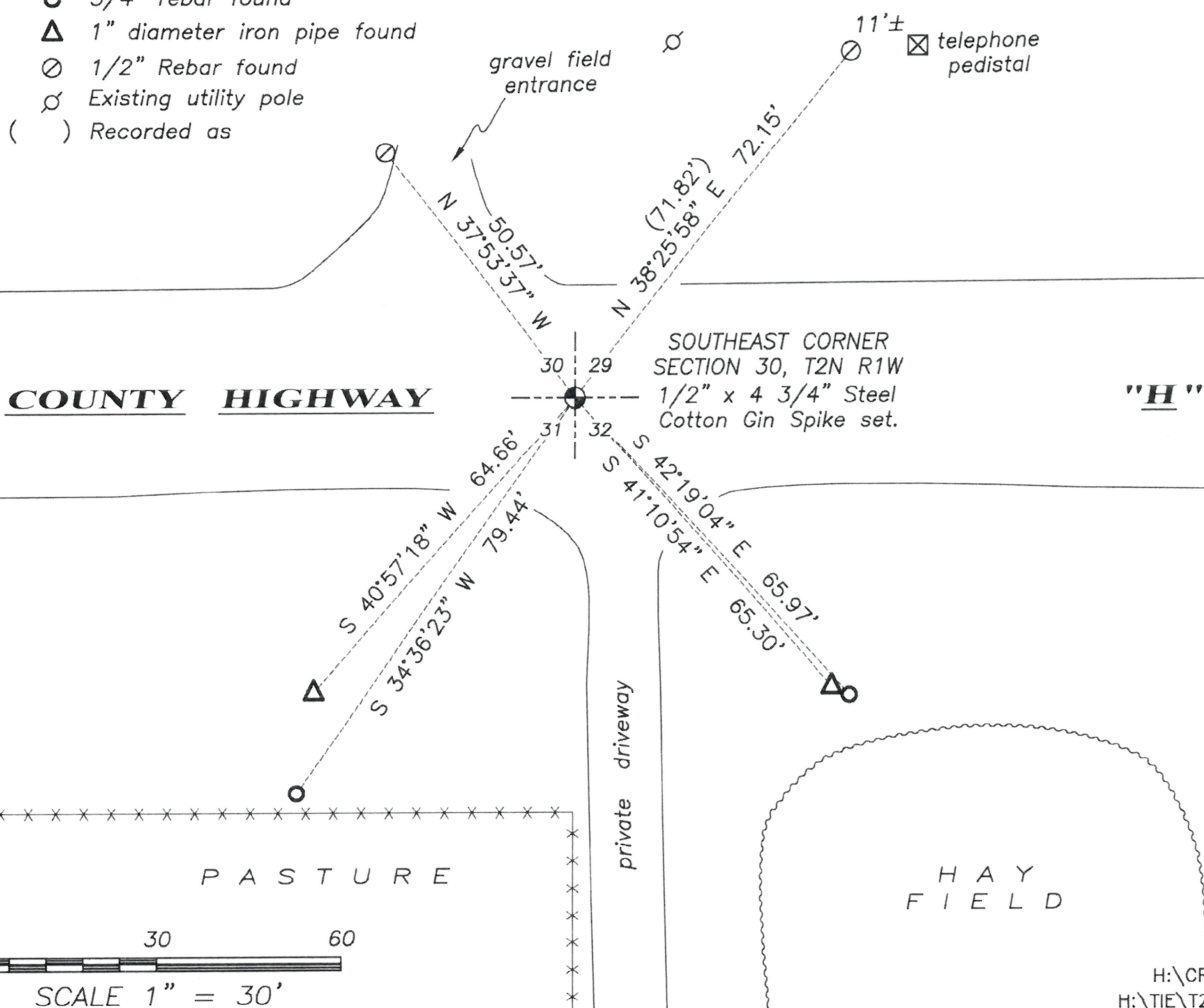
Witnesses to corner location Owen Austin, Tanner Austin.
Drawn by: Owen Austin.

SKETCH:

LEGEND

- Section Corner—as designated
- 3/4" rebar found
- △ 1" diameter iron pipe found
- ⊙ 1/2" Rebar found
- ⊘ Existing utility pole
- () Recorded as

F I E L D



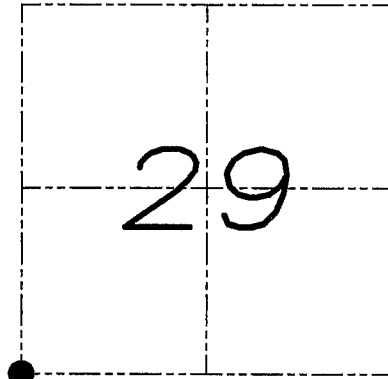
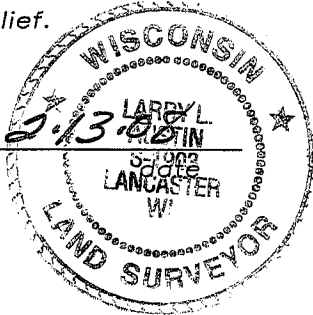
U.S. PUBLIC LAND SURVEY MONUMENT RECORD

Section 29, Town 2 North Range 1 West, Town of Smelser, Grant County, Wisconsin

CERTIFICATE

I, Larry L. Austin, do hereby certify that the corner location on this record was determined by me and/or under my direct supervision and that this U.S. public land survey monument record is correct and complete to the best of my knowledge and belief.

Larry L. Austin
Larry L. Austin, S-1903



● = CORNER LOCATION

HISTORY OF CORNER

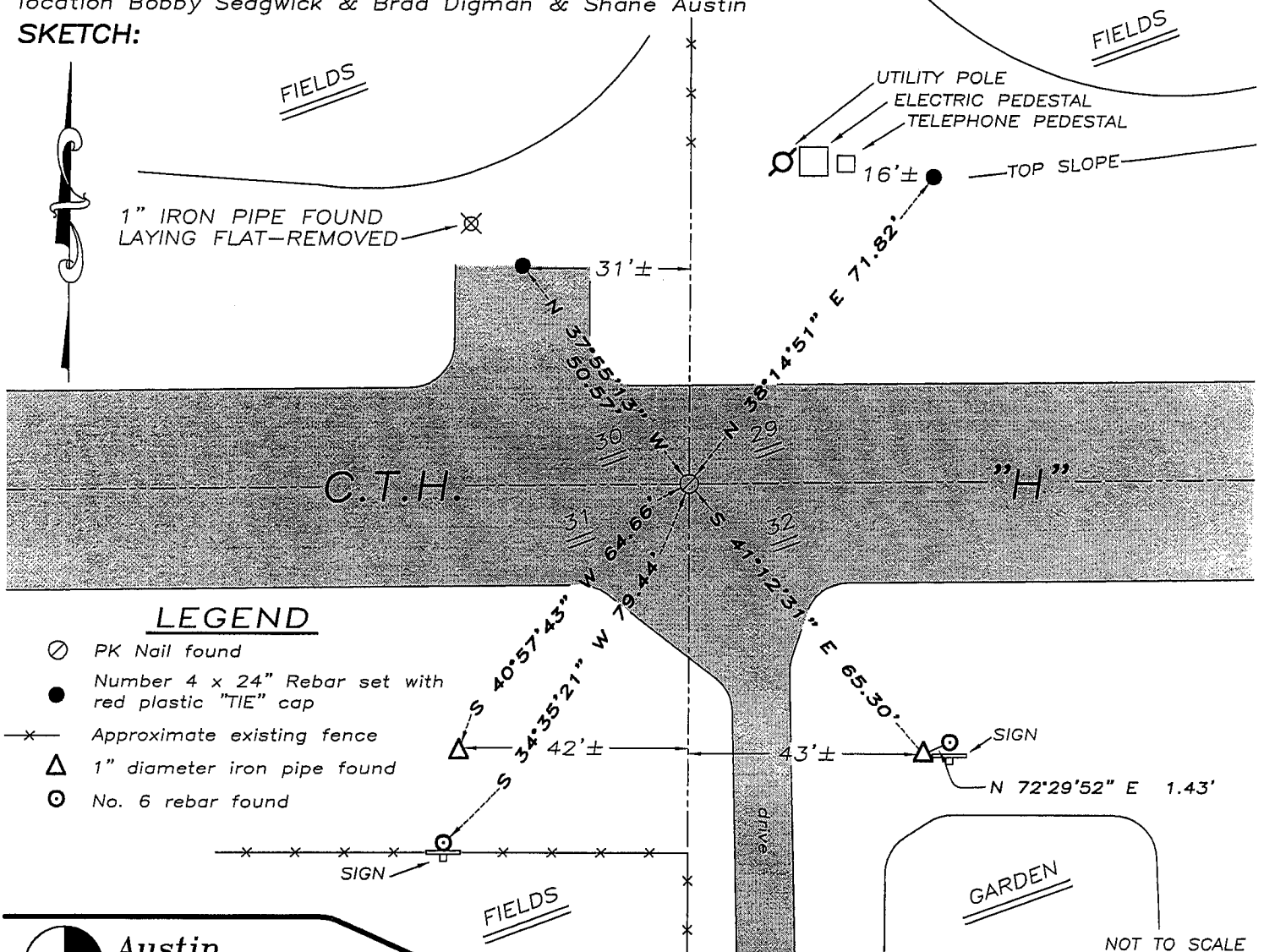
Corner was originally set in 1832 by Lyon. Bowden reestablished the corner in 1985. In 1995 I found and accepted a 1.25" iron bar at this location. No other record of the corner was found.

CORNER EVIDENCE FOUND

The corner monument was lost due to recent highway construction. Two ties were found along with two ties of unknown origin. I found and accepted a P.K. Nail at this location and set two new ties as shown below. Verified this location using EDM & GPS methods.

DESCRIPTION OF CORNER AND WITNESS MONUMENTS, references and accessories used to perpetuate the original or re-established location of this corner. Witnesses to monument location Bobby Sedgwick & Brad Digman & Shane Austin

SKETCH:



LEGEND

- ⊙ PK Nail found
- Number 4 x 24" Rebar set with red plastic "TIE" cap
- x— Approximate existing fence
- △ 1" diameter iron pipe found
- ⊙ No. 6 rebar found



Austin Engineering LLC

4211 HWY 81 E, LANCASTER, WI 53813
PHONE 608-723-6363 FAX 608-723-6702

JOB NUMBER 07S346
FIELDBOOK: TDSR, 2711
G:\T2NR1W\17
H:\TIE\T2NR1W\111

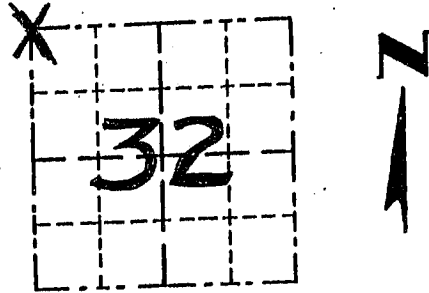
DRAWN BY: SW AUSTIN
APPROVED: LL AUSTIN

GRANT COUNTY

Survey Monument Record

TYPE OF MONUMENT 1 1/4" IRON BAR FOUND
 STATE PLANE COORDINATES: N _____
 E _____
 ELEVATION — M.S.L. DATUM: _____
 THETA ANGLE: _____
 FIELD BOOK: 94-11
 PAGE _____

CORNER NO. 111
 SECTION 32
 TOWN 2 N
 RANGE 1 W.
NW COR



LOCATION
(Indicated by "X")

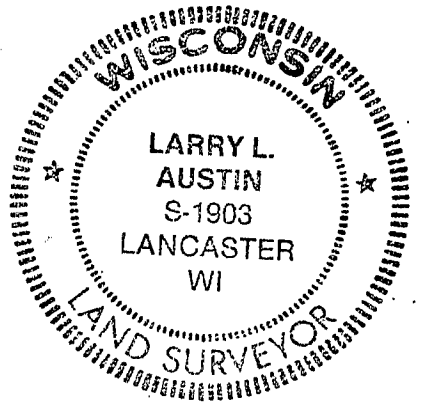
BASIS FOR MONUMENT LOCATION

(Use reverse side if necessary)

Show info such as: History of corner, with reference to Vol. and pg., dates, surveyor; exact description of monument replaced; if location computed, by taped or EDM traverse; landowner, remarks, etc.

SEAL:

CORNER WAS ESTABLISHED BY
 LUCIUS LYON IN 1832. BRUCE
 BOWDEN RESTABLISHED CORNER
 IN 1985. 1 1/4" BAR WAS FOUND, I ACCEPTED
 ITS LOCATION & VERIFIED BY EDM
 TRAVERSE OF THE AREA.

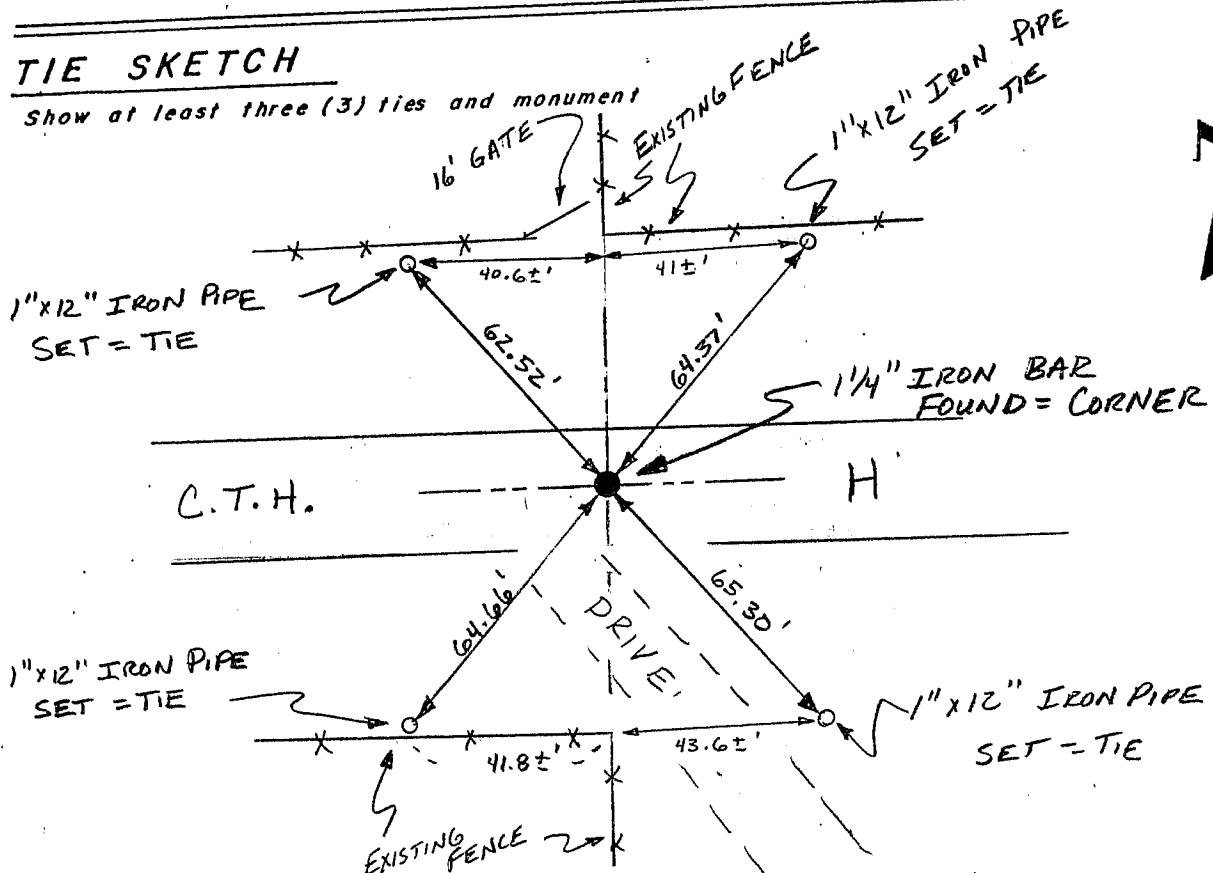


CERTIFIED CORRECT

Larry L. Austin
 Registered Land Surveyor
 DATE: 2/4/95

TIE SKETCH

Show at least three (3) ties and monument



NO SCALE