

# U.S. PUBLIC LAND SURVEY MONUMENT RECORD - GRANT COUNTY, WI

Section 29, Town 2 North Range 1 West, Town of Smelser (a)

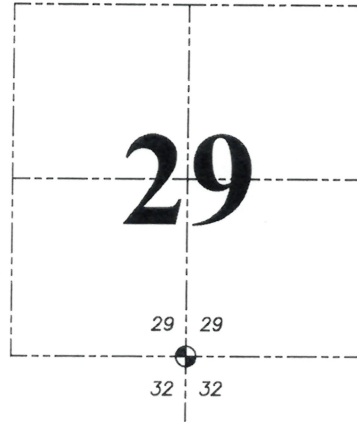
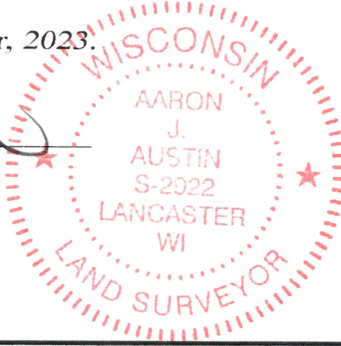
NOTE: This form is intended and designed to fulfill all requirements of the Wisconsin Administrative Code Chapter A-E 7.08, U.S. Public Land Survey Monument Record (3) (a) (b) (c) (d) (e) (f) (g) (h) (i).

**CERTIFICATE:** (i)

I, Aaron J. Austin, Wisconsin Professional Land Surveyor, do hereby certify that the corner location on this record was determined by me and/or under my direct supervision and that this U.S. Public Land Survey Monument Record is correct and complete to the best of my knowledge and belief.

Dated this 20th day of October, 2023.

*Aaron J. Austin*  
Aaron J. Austin, S-2922



☉ = CORNER LOCATION

Grant County Coordinates:  
NAD 83 (2011)  
Northing: 436,837.46  
Easting: 871,888.55

**HISTORY OF CORNER ESTABLISHMENT:**

Original corner was set in 1832 by Lucius Lyon.  
Bruce Bowden set a 1" Iron Pipe on a Survey filed in Book 1, Page 113 dated 9-23-1985.  
Larry Austin found a 1" Iron Pipe and prepared a Survey Monument Record dated 2-4-1995.  
Larry Austin set a P.K. Nail on a Survey filed in Book 22, Page 25 dated 12-12-2007.  
Larry Austin found a P.K. Nail and prepared a Survey Monument Record dated 2-13-2008

**DESCRIPTION OF CORNER EVIDENCE FOUND:** (b) (f) (g) (h)

I found and measured a P.K. Nail before road construction of County Highway "H". I set a 1/2" x 4 3/4" Steel Cotton Gin Spike after construction in the same location. I found four witness corners after I verified the Monument's location with G.P.S. and E.D.M. methods.

**DESCRIPTION OF CORNER AND WITNESS MONUMENTS,** references and accessories used to perpetuate the original or re-established location of this corner. (c) (d) (e)

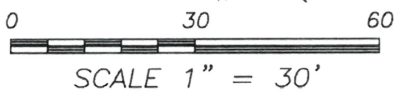
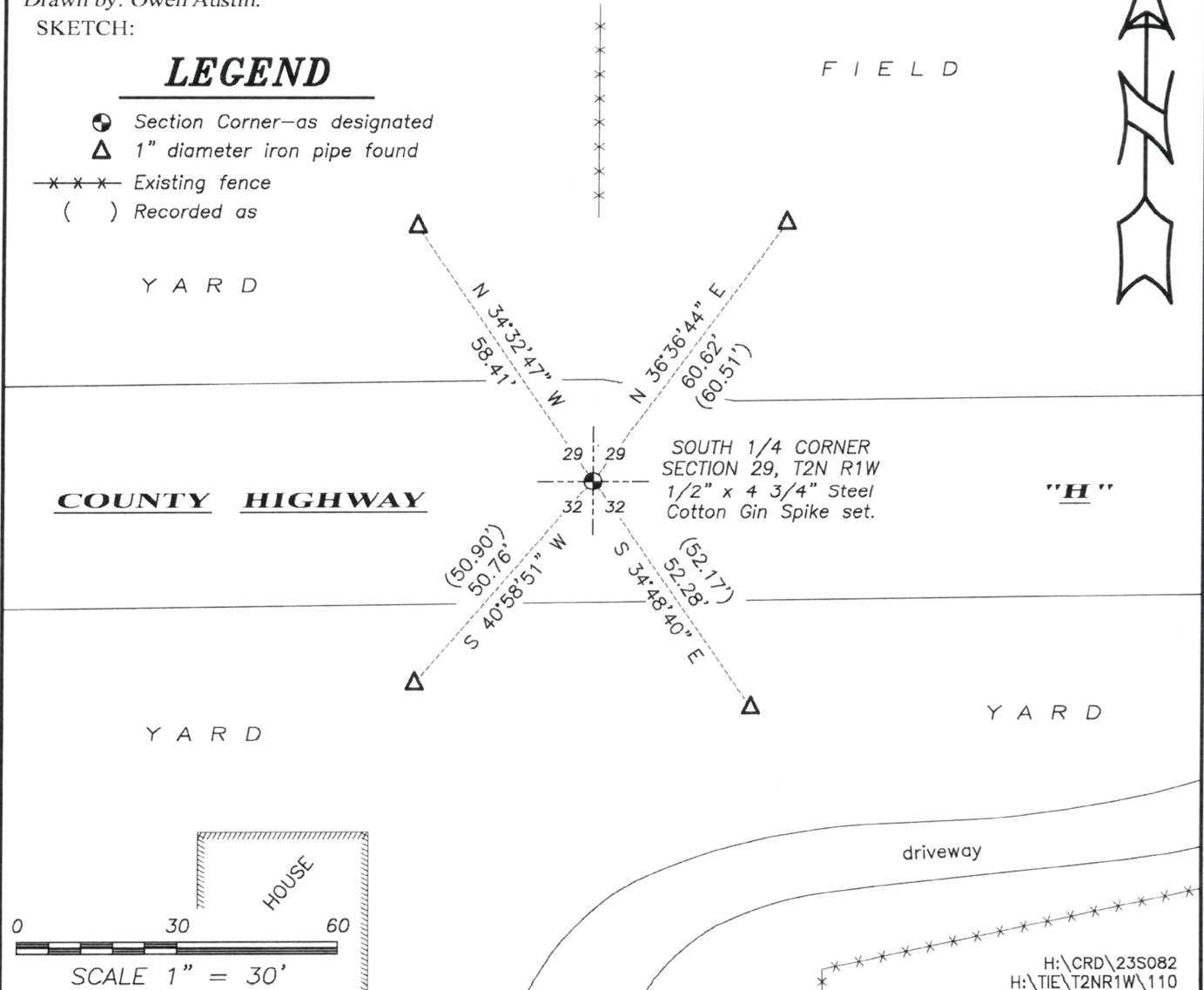
Witnesses to corner location Owen Austin, Tanner Austin.

Drawn by: Owen Austin.

SKETCH:

## LEGEND

- ☉ Section Corner—as designated
- △ 1" diameter iron pipe found
- x-x-x- Existing fence
- ( ) Recorded as



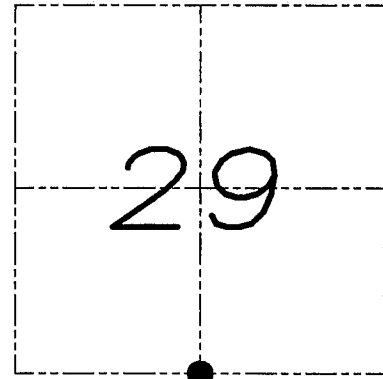
# U.S. PUBLIC LAND SURVEY MONUMENT RECORD

Section 29, Town 2 North Range 1 West, Town of Smelser, Grant County, Wisconsin

## CERTIFICATE

I, Larry L. Austin, do hereby certify that the corner location on this record was determined by me and/or under my direct supervision and that this U.S. public land survey monument record is correct and complete to the best of my knowledge and belief.

*Larry L. Austin*  
 Larry L. Austin, S-1903



● = CORNER LOCATION

## HISTORY OF CORNER

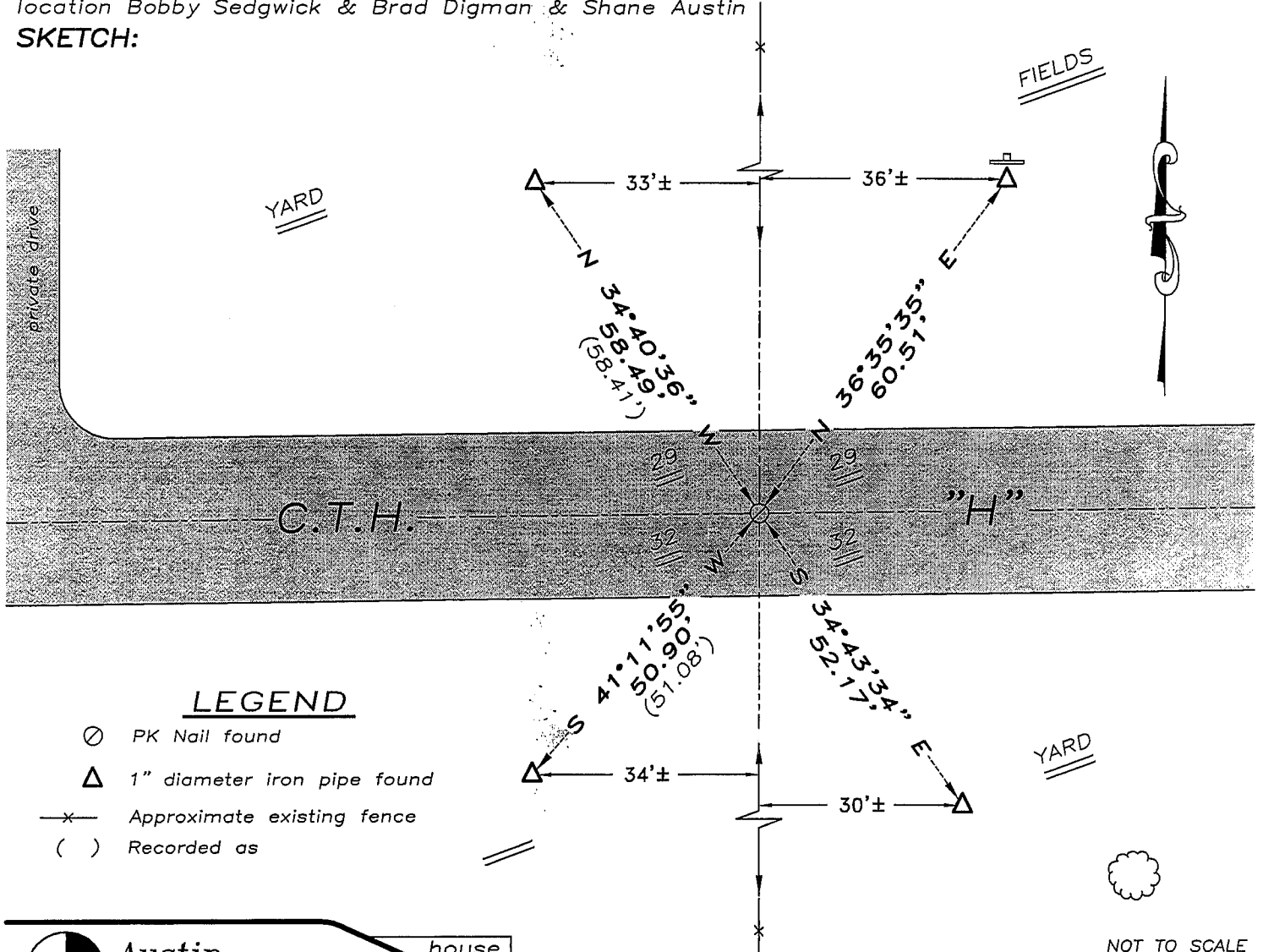
Corner was originally set in 1832 by Lyon. In 1985 Bowden reestablished the corner. In 1995 I found and accepted a 1" iron pipe at this location. No other record of the corner was found.

## CORNER EVIDENCE FOUND

The monument was lost due to recent highway construction. All ties were found intact. I found and accepted a P.K. Nail at this location after confirming it's location with the existing ties. Verified this location using EDM & GPS methods.

DESCRIPTION OF CORNER AND WITNESS MONUMENTS, references and accessories used to perpetuate the original or re-established location of this corner. Witnesses to monument location Bobby Sedgwick & Brad Digman & Shane Austin

## SKETCH:



## LEGEND

- PK Nail found
- △ 1" diameter iron pipe found
- x- Approximate existing fence
- ( ) Recorded as

NOT TO SCALE



**Austin Engineering LLC**

4211 HWY 81 E, LANCASTER, WI 53813  
 PHONE 608-723-6363 FAX 608-723-6702

JOB NUMBER 07S346  
 FIELDBOOK: TDSR, 2711  
 G:\T2NR1W\17  
 H:\TIE\T2NR1W\110

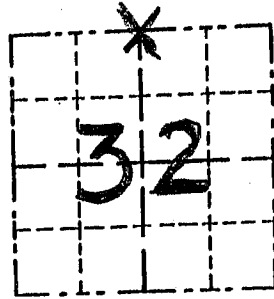
DRAWN BY: SW AUSTIN  
 APPROVED: LL AUSTIN

# GRANT COUNTY

## Survey Monument Record

TYPE OF MONUMENT 1" IRON PIPE FOUND  
 STATE PLANE COORDINATES: N \_\_\_\_\_  
 E \_\_\_\_\_  
 ELEVATION — M.S.L. DATUM: \_\_\_\_\_  
 THETA ANGLE: \_\_\_\_\_  
 FIELD BOOK: 9411  
 PAGE \_\_\_\_\_

CORNER NO. 110  
 SECTION 32  
 TOWN 2 N  
 RANGE 1 W  
N 1/4



LOCATION  
 (Indicated by "X")

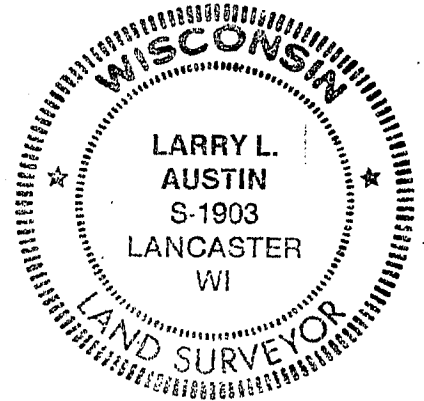
### BASIS FOR MONUMENT LOCATION

(Use reverse side if necessary)

Show info such as: History of corner, with reference to Vol. and pg., dates, surveyor; exact description of monument replaced; if location computed, by taped or EDM traverse; landowner, remarks, etc.

SEAL:

LUCIUS LYON ESTABLISHED ORIGINAL CORNER IN 1832, BRUCE BOWDEN REESTABLISHED CORNER IN 1985. 1" IRON PIPE WAS ACCEPTED AND VERIFIED BY EDM TRAVERSE OF THE AREA.



CERTIFIED CORRECT

*Larry L. Austin*  
 Registered Land Surveyor

DATE: 2/4/95

### TIE SKETCH

Show at least three (3) ties and monument

