

U.S. PUBLIC LAND SURVEY MONUMENT RECORD - GRANT COUNTY, WI

Section 29, Town 2 North Range 1 West, Town of Smelser (a)

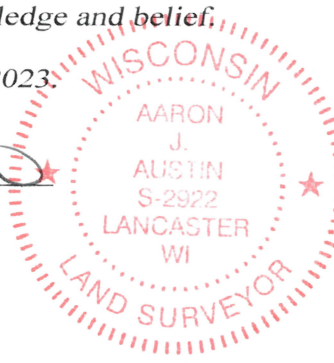
NOTE: This form is intended and designed to fulfill all requirements of the Wisconsin Administrative Code Chapter A-E 7.08, U.S. Public Land Survey Monument Record (3) (a) (b) (c) (d) (e) (f) (g) (h) (i).

CERTIFICATE: (i)

I, Aaron J. Austin, Wisconsin Professional Land Surveyor, do hereby certify that the corner location on this record was determined by me and/or under my direct supervision and that this U.S. Public Land Survey Monument Record is correct and complete to the best of my knowledge and belief.

Dated this 20th day of October, 2023.

Aaron J. Austin, S-2922



Grant County Coordinates: NAD 83 (2011) Northing: 436,856.09 Easting: 874,524.20

⊕ = CORNER LOCATION

HISTORY OF CORNER ESTABLISHMENT:

Original corner was set in 1832 by Lucius Lyon. Larry Austin found a P.K. Nail and prepared a Survey Monument Record dated 2-4-1995. Larry Austin found a P.K. Nail and prepared a Survey Monument Record dated 8-14-2003. John White found a P.K. Nail and prepared a Survey Monument Record dated 5-2-2004.

DESCRIPTION OF CORNER EVIDENCE FOUND: (b) (f) (g) (h)

I found and measured a P.K. Nail before road construction of County Highway "H". I set a 1/2" x 4 3/4" Steel Cotton Gin Spike after construction in the same location. I found one witness corner and established three additional after I verified the Monument's location with G.P.S. and E.D.M. methods

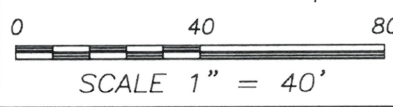
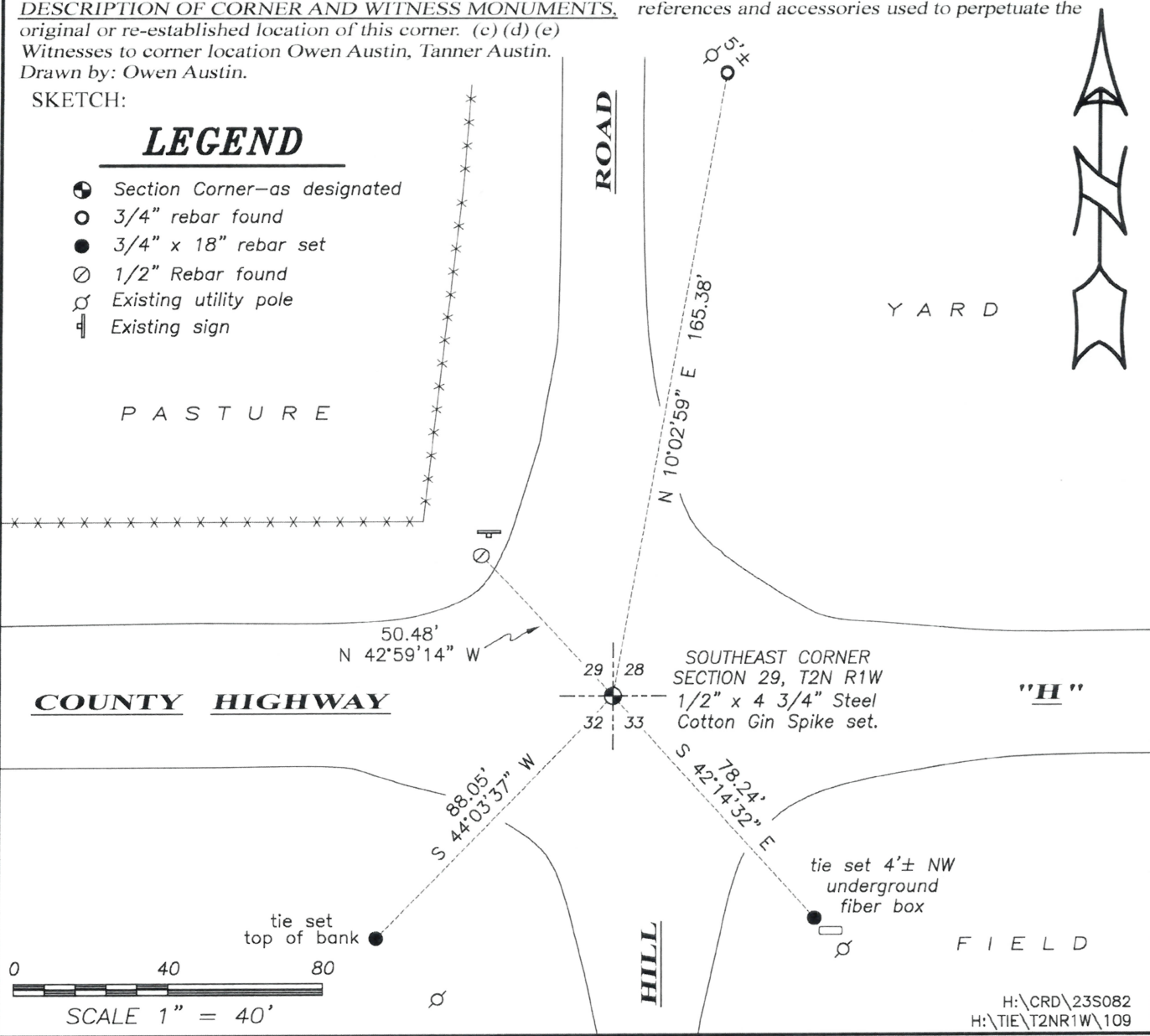
DESCRIPTION OF CORNER AND WITNESS MONUMENTS, references and accessories used to perpetuate the original or re-established location of this corner. (c) (d) (e)

Witnesses to corner location Owen Austin, Tanner Austin. Drawn by: Owen Austin.

SKETCH:

LEGEND

- ⊕ Section Corner—as designated
○ 3/4" rebar found
● 3/4" x 18" rebar set
⊘ 1/2" Rebar found
⊙ Existing utility pole
⊔ Existing sign



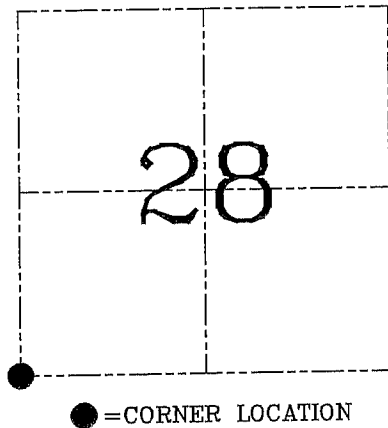
U.S. PUBLIC LAND SURVEY MONUMENT RECORD – GRANT COUNTY, WI
Section 28, Town 2 North Range 1 West, Town of Smelser

CERTIFICATE

I, Larry L. Austin, do hereby certify that the corner location on this record was determined by me and/or under my direct supervision and that this U.S. public land survey monument record is correct and complete to the best of my knowledge and belief.

Dated this 14th day of August, 2003

Larry L. Austin
 Larry L. Austin S-1903



HISTORY OF CORNER ESTABLISHMENT

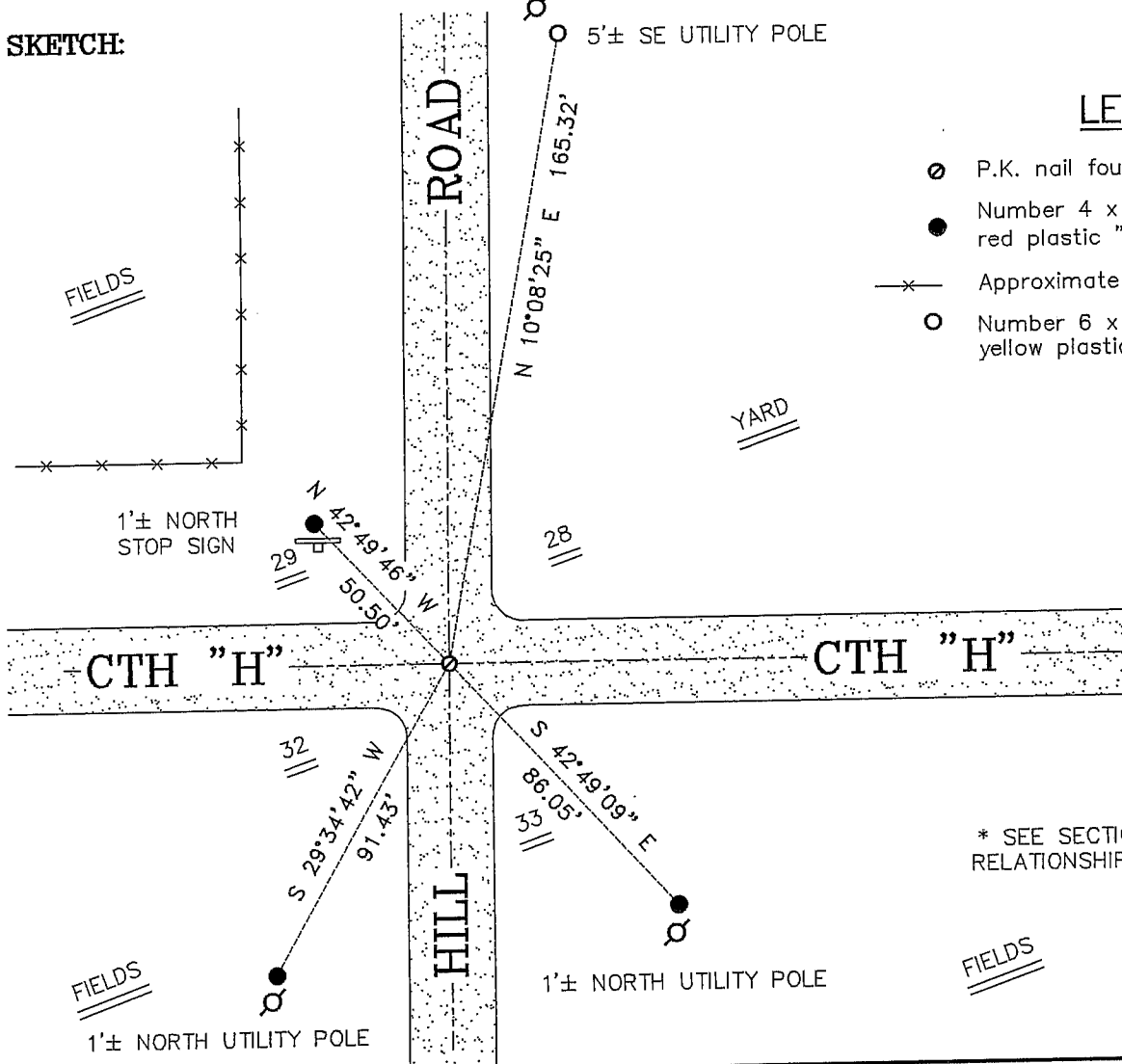
Corner was originally set in 1832 by Lyon. In 1985 Bowden tied to the corner. In 1995 I tied out the corner and accepted Bowden's location.

DESCRIPTION OF CORNER EVIDENCE FOUND

The previous corner and ties were lost during road construction. A P.K. nail was set after road construction. I accepted the location of the P.K. nail and set new ties after an EDM & GPS traverse of the area.

DESCRIPTION OF CORNER AND WITNESS MONUMENTS, references and accessories used to perpetuate the original or re-established location of this corner. Witnesses to corner location Bobby Sedgwick & Shelby Blindert & Brad Digman

SKETCH:



LEGEND

- P.K. nail found
- Number 4 x 24" Rebar set with red plastic "TIE" cap
- x— Approximate existing fence
- Number 6 x 24" rebar set with yellow plastic survey cap

* SEE SECTION SUMMARY FOR *
 RELATIONSHIP TO AREA CORNERS

SKETCH NOT TO SCALE

AUSTIN ENGINEERING, LLC

4211 HWY 81 EAST, LANCASTER, WI 53813
 PHONE 608-723-6363 FAX 608-723-6702

FIELDBOOK: TDS RNGR, 2311
 G: \T2NR1W\17
 H: \TIE\T2NR1W\109
 JOB NUMBER 03S224

DRAWN BY: SW AUSTIN
 APPROVED: LL AUSTIN

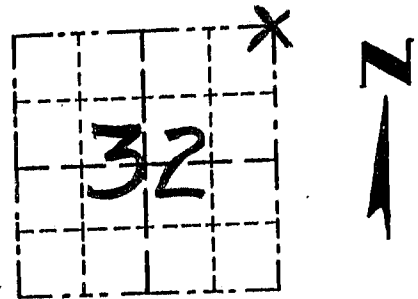
CORNER NUMBER 109

GRANT COUNTY

Survey Monument Record

TYPE OF MONUMENT PK NAIL FOUND
 STATE PLANE COORDINATES: N. _____
 E. _____
 ELEVATION — M.S.L. DATUM: _____
 THETA ANGLE: _____
 FIELD BOOK: 9411
 PAGE _____

CORNER NO. 109
 SECTION 32
 TOWN 2N
 RANGE 1W
NECOR



LOCATION
(Indicated by "X")

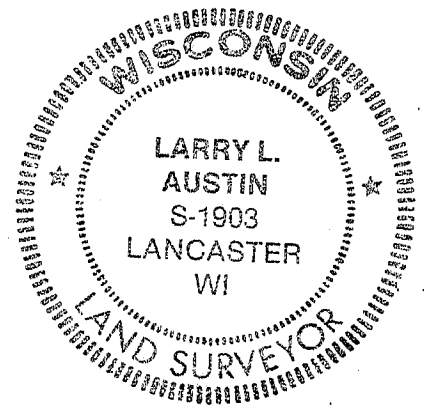
BASIS FOR MONUMENT LOCATION

(Use reverse side if necessary)

Show info such as: History of corner, with reference to Vol. and pg., dates, surveyor; exact description of monument replaced; if location computed, by taped or EDM traverse; landowner, remarks, etc.

SEAL:

RECORDS SHOW A $\frac{3}{8}$ " X 8" SPIKE
 ON A 1985 SURVEY BY BOWDEN,
 AT THE CORNER LOCATION,
 I ACCEPTED THIS LOCATION.
 I VERIFIED THE LOCATION BY
 EDM TRAVERSE OF THE
 AREA.



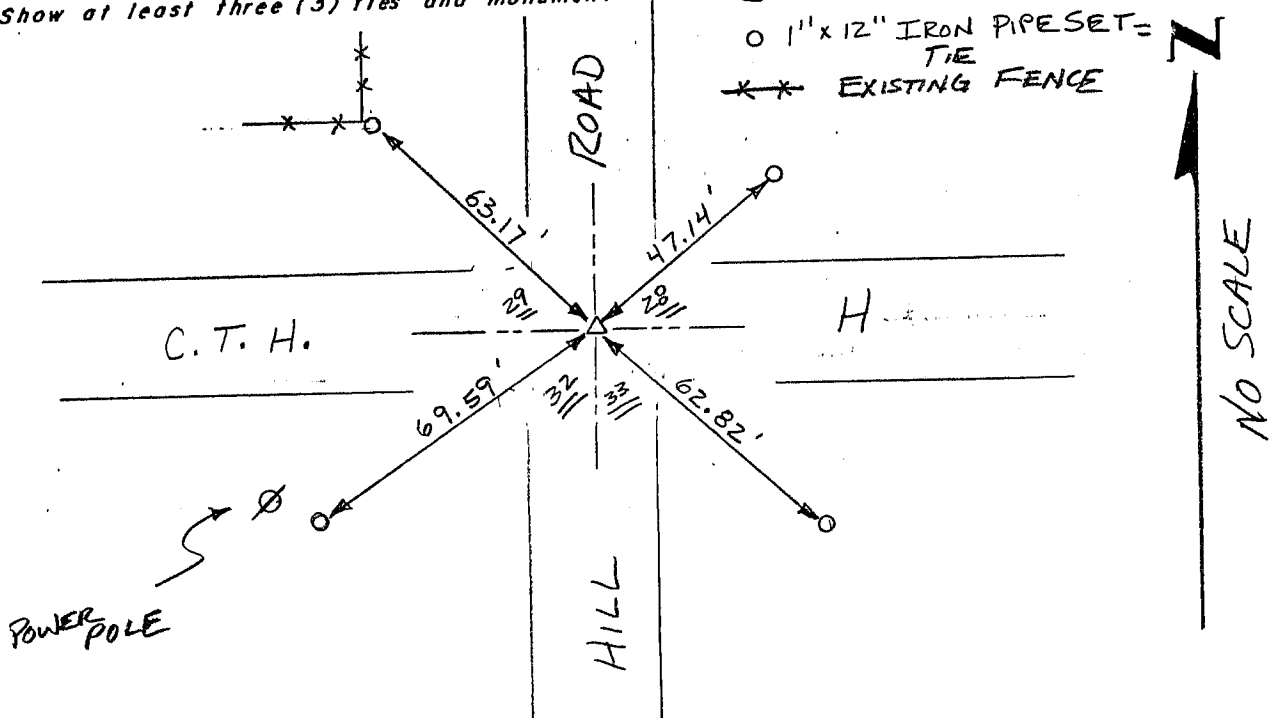
CERTIFIED CORRECT

Larry L. Austin
 Registered Land Surveyor

DATE: 2/4/95

TIE SKETCH

Show at least three (3) ties and monument



LEGEND

- △ PK NAIL FOUND = CORNER
- 1" x 12" IRON PIPE SET = TIE
- X X --- EXISTING FENCE

Prepare's Name: John L. White Address: 1212 Locust St. Dubuque, IA Telephone: (563) 556-4389

SLSI 9-94

UNITED STATES PUBLIC LAND SURVEY MONUMENT RECORD

OF

Land Survey Monuments situated in Section 33, Township 2N, Range 1W, of the Fourth Principal Meridian, GRANT County, Wisconsin. Previously recorded in _____ in County Recorder's Office.
(book, page, document number, etc.)

(Show reason for preparing this certificate, the evidence and detailed procedures used in establishing the corner positions and monumentation found or placed.)

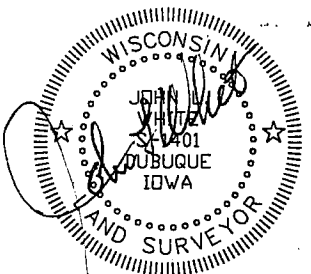
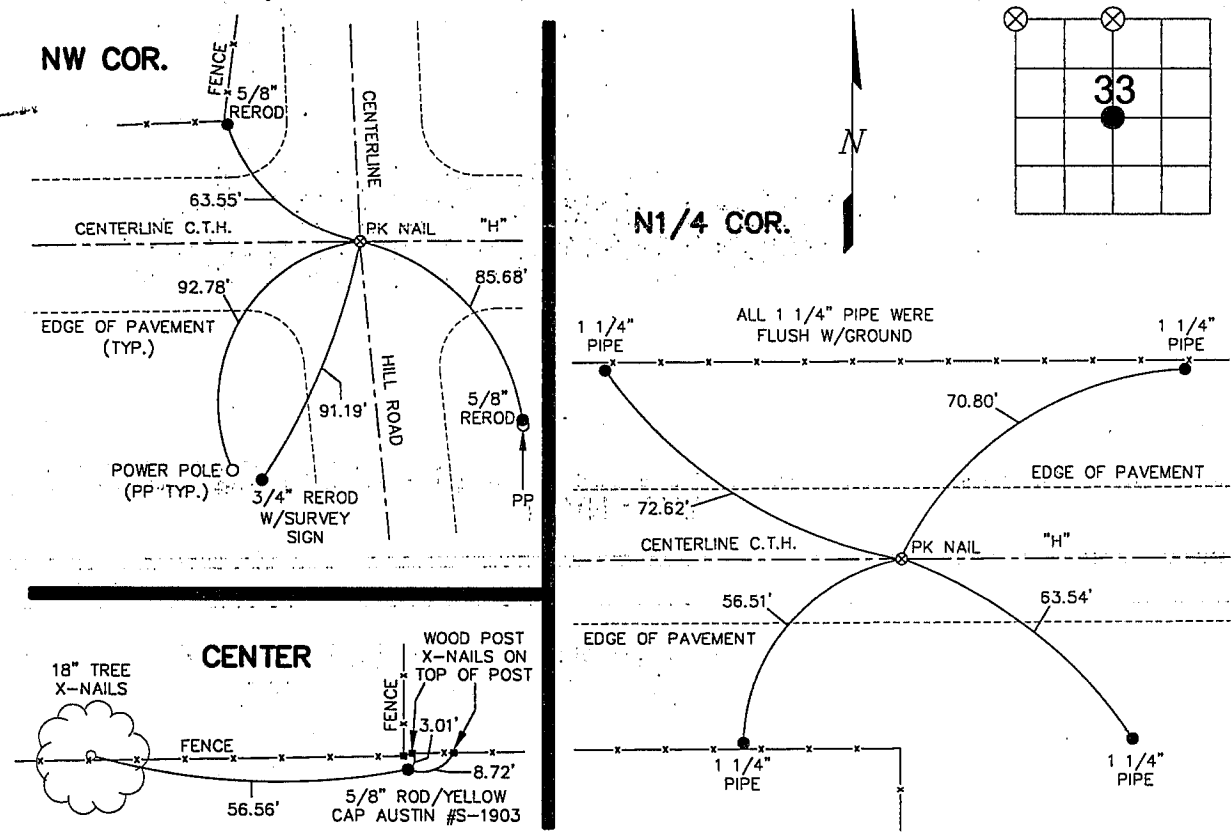
Monument Description and Remarks: FOUND PK NAIL @ THE NW CORNER IN ASPHALT.

FOUND PK NAIL @ THE N1/4 CORNER IN ASPHALT. ASPHALT WAS PARTIALLY CHIPPED AWAY.

FOUND 5/8" ROD/YELLOW CAP (AUSTIN #S-1903) @ THE CENTER. EXPOSED 2".

PLAN - VIEW

(Show a minimum of three reference ties to durable physical objects, relevant monuments and physical conditions that will enable recovery of the corner.)



I HEREBY CERTIFY THAT THIS LAND SURVEYING DOCUMENT WAS PREPARED AND THE RELATED SURVEY WORK WAS PERFORMED BY ME OR UNDER MY DIRECT PERSONAL SUPERVISION AND THAT I AM A DULY LICENSED LAND SURVEYOR UNDER THE LAWS OF THE STATE OF WISCONSIN.

JOHN L. WHITE (DATE) 5 Jan 2004

LICENSE NUMBER S-1401
 MY LICENSE RENEWAL DATE IS DECEMBER 31, 2004

Corners	List Corners to be Indexed . Section	Twp	Range
NW COR.	33	2N	1W
N1/4 COR.	33	2N	1W
CENTER	33	2N	1W

BUESING & ASSOCIATES CONSULTING ENGINEERS 1212 LOCUST STREET DUBUQUE, IOWA 52001 (563) 556-4389	MONUMENT RECORD		
	COUNTY: <u>GRANT</u> TOWNSHIP: <u>SMELSER</u>		
DATE PLOTTED: 1-2-04 DATE REVISED:	FIELD BOOK # _____ PAGE # FIELD SURVEY	DRAWING # 03239-ST	