

U.S. PUBLIC LAND SURVEY MONUMENT RECORD - GRANT COUNTY, WI

Section 28, Town 2 North Range 1 West, Town of Smelser (a)

NOTE: This form is intended and designed to fulfill all requirements of the Wisconsin Administrative Code Chapter A-E 7.08, U.S. Public Land Survey Monument Record (3) (a) (b) (c) (d) (e) (f) (g) (h) (i).

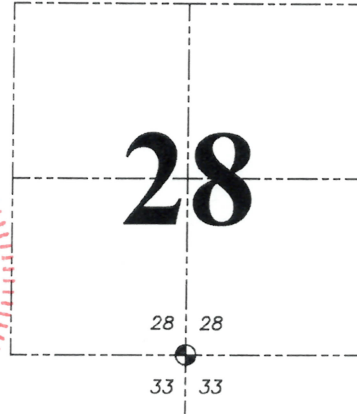
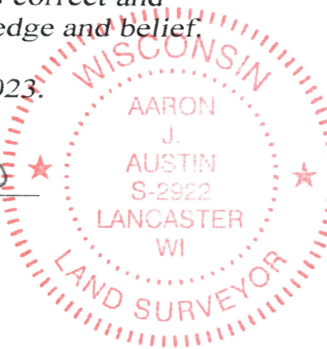
CERTIFICATE: (i)

I, Aaron J. Austin, Wisconsin Professional Land Surveyor, do hereby certify that the corner location on this record was determined by me and/or under my direct supervision and that this U.S. Public Land Survey Monument Record is correct and complete to the best of my knowledge and belief.

Dated this 20th day of October, 2023.

Aaron J. Austin

Aaron J. Austin, S-2922



⊙ = CORNER LOCATION

Grant County Coordinates:
NAD 83 (2011)
Northing: 436,881.15
Easting: 877,182.91

HISTORY OF CORNER ESTABLISHMENT:

Original corner was set in 1832 by Lucius Lyon.
Larry Austin set a 3/4" Rebar and prepared a Survey Monument Record dated 6-6-1995.
John White found a P.K. Nail and prepared a Survey Monument Record dated 1-5-2004.

DESCRIPTION OF CORNER EVIDENCE FOUND: (b) (f) (g) (h)

I found and measured a P.K. Nail before road construction of County Highway "H". I set a 1/2" x 4 3/4" Steel Cotton Gin Spike after construction in the same location. I found two witness corners and established two additional witness corners after I verified the Monument's location with G.P.S. and E.D.M. methods.

DESCRIPTION OF CORNER AND WITNESS MONUMENTS: references and accessories used to perpetuate the original or re-established location of this corner. (c) (d) (e)
Witnesses to corner location Owen Austin, Tanner Austin.
Drawn by: Owen Austin.

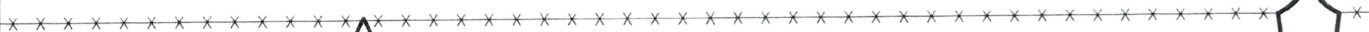
SKETCH:

LEGEND

- ⊙ Section Corner—as designated
- △ 1 1/4" diameter iron pipe found
- 3/4" x 18" rebar set
- x-x-x- Existing fence
- ~~~~~ Edge of field



F I E L D



edge of blacktop

COUNTY HIGHWAY

"H"

SOUTH 1/4 CORNER
SECTION 28, T2N R1W
1/2" x 4 3/4" Steel
Cotton Gin Spike set.

N 47°35'14" W 72.67'

N 55°05'00" E 67.14'

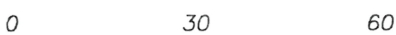
S 29°55'58" W 56.43'

S 43°24'00" E 58.92'

△ Tie found disturbed and reset

F I E L D

F I E L D



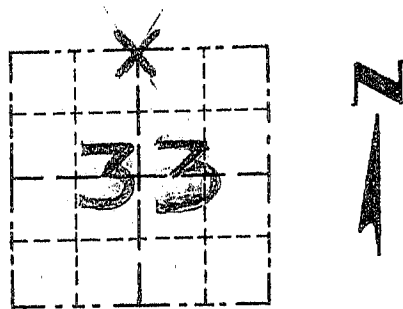
SCALE 1" = 30'

GRANT COUNTY

Survey Monument Record

TYPE OF MONUMENT 3/4" X 24" IRON BAR
 STATE PLANE COORDINATES: N _____
 E _____
 ELEVATION — M.S.L. DATUM: _____
 THETA ANGLE: _____
 FIELD BOOK: 95-03
 PAGE: 30

CORNER NO. 108
 SECTION 33
 TOWN 2N
 RANGE 1W



LOCATION
 (Indicated by "X")

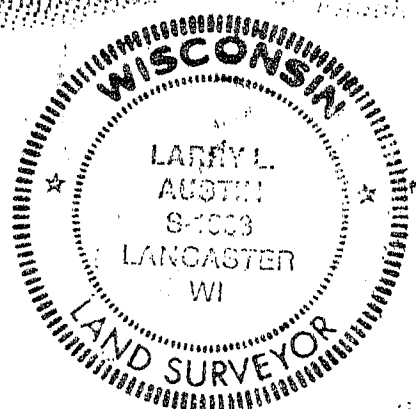
BASIS FOR MONUMENT LOCATION

(Use reverse side if necessary)

Show info such as: History of corner, with reference to Vol. and pg., dates, surveyor; exact description of monument replaced; if location computed, by taped or EDM traverse; landowner, remarks, etc.

SEAL:

MONUMENT SET AT OCCUPIED
 LOCATION; NO RECORD FOUND
 OF CORNER SINCE ORIGINAL
 SURVEYS; LOCATION VERIFIED
 BY PROPORTIONATE MEASURE
 MENTS TO OTHER CORNERS
 IN THE AREA; EDM
 TRAVERSE USED.



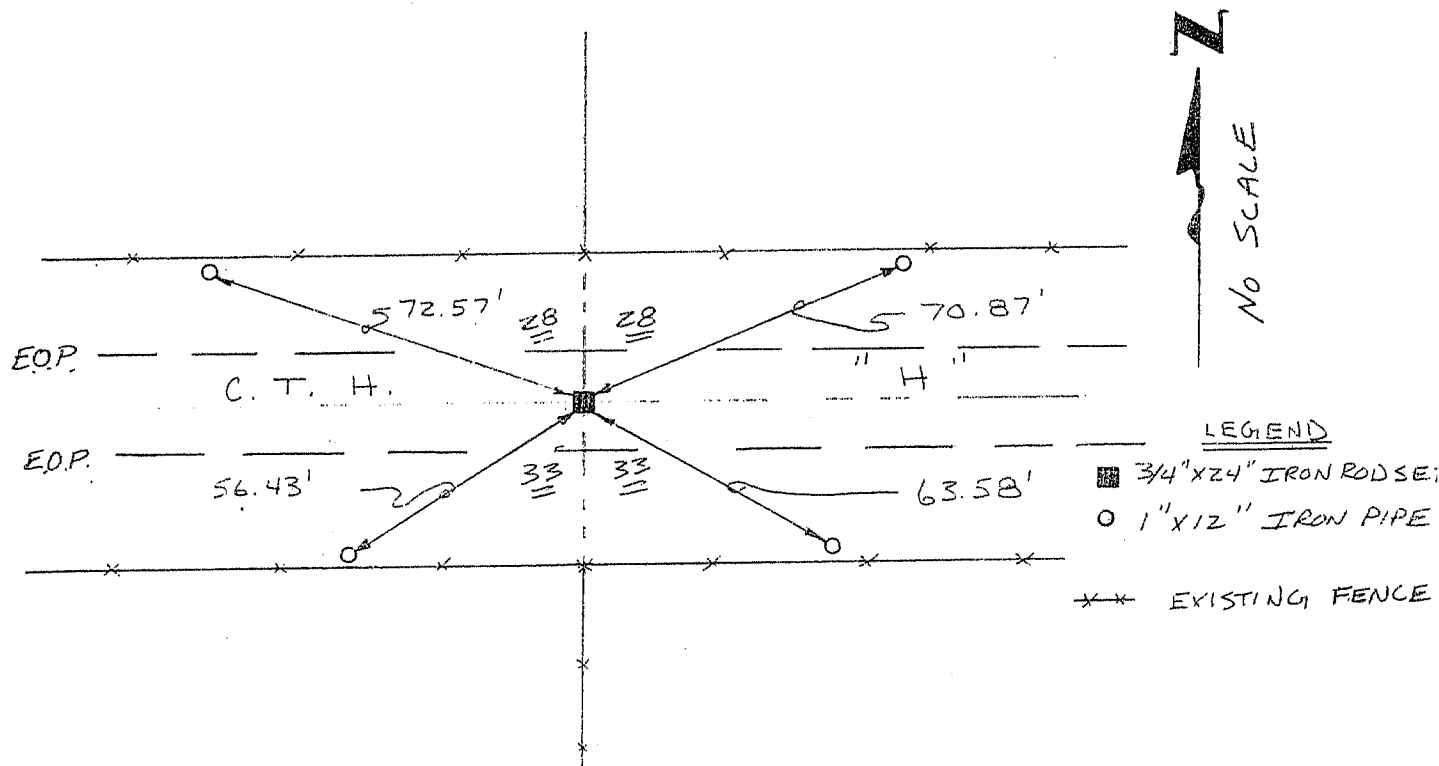
CERTIFIED CORRECT

Larry L. Austin
 Registered Land Surveyor

DATE: _____

TIE SKETCH

Show at least three (3) ties and monument



UNITED STATES PUBLIC LAND SURVEY MONUMENT RECORD

OF

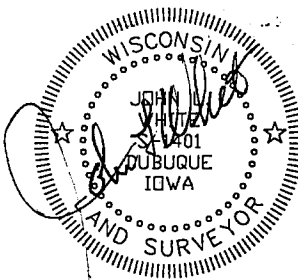
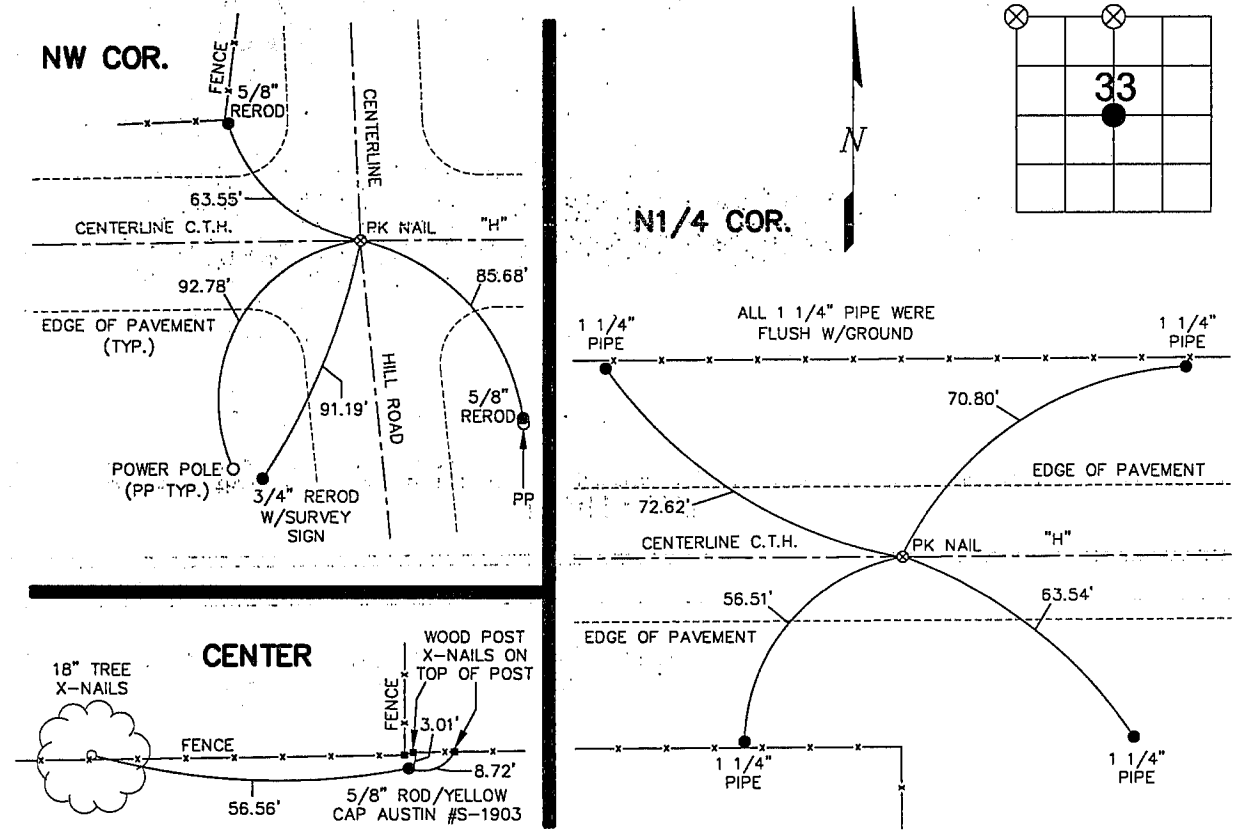
Land Survey Monuments situated in Section 33, Township 2N, Range 1W, of the Fourth Principal Meridian, GRANT County, Wisconsin. Previously recorded in _____ in County Recorder's Office.
(book, page, document number, etc.)

(Show reason for preparing this certificate, the evidence and detailed procedures used in establishing the corner positions and monumentation found or placed.)

Monument Description and Remarks: FOUND PK NAIL @ THE NW CORNER IN ASPHALT.
FOUND PK NAIL @ THE N1/4 CORNER IN ASPHALT. ASPHALT WAS PARTIALLY CHIPPED AWAY.
FOUND 5/8" ROD/YELLOW CAP (AUSTIN #S-1903) @ THE CENTER. EXPOSED 2".

PLAN - VIEW

(Show a minimum of three reference ties to durable physical objects, relevant monuments and physical conditions that will enable recovery of the corner.)



I, HEREBY CERTIFY THAT THIS LAND SURVEYING DOCUMENT WAS PREPARED AND THE RELATED SURVEY WORK WAS PERFORMED BY ME OR UNDER MY DIRECT PERSONAL SUPERVISION AND THAT I AM A DULY LICENSED LAND SURVEYOR UNDER THE LAWS OF THE STATE OF WISCONSIN.
 John L. White 5 Jan 2004
 JOHN L. WHITE (DATE)
 LICENSE NUMBER S-1401
 MY LICENSE RENEWAL DATE IS DECEMBER 31, 2004

Corners	List Corners to be Indexed		
	Section	Twp	Range
NW COR.	33	2N	1W
N1/4 COR.	33	2N	1W
CENTER	33	2N	1W

BUESING & ASSOCIATES CONSULTING ENGINEERS 1212 LOCUST STREET DUBUQUE, IOWA 52001 (563) 556-4389	MONUMENT RECORD		
	COUNTY: <u>GRANT</u> TOWNSHIP: <u>SMELSER</u>		DATE PLOTTED: 1-2-04 DATE REVISED: