

# U.S. PUBLIC LAND SURVEY MONUMENT RECORD - GRANT COUNTY, WI

Section 28, Town 2 North Range 1 West, Town of Smelser (a)

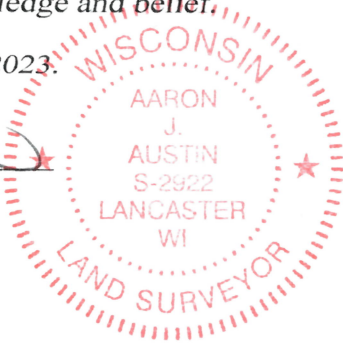
NOTE: This form is intended and designed to fulfill all requirements of the Wisconsin Administrative Code Chapter A-E 7.08, U.S. Public Land Survey Monument Record (3) (a) (b) (c) (d) (e) (f) (g) (h) (i).

CERTIFICATE: (i)

I, Aaron J. Austin, Wisconsin Professional Land Surveyor, do hereby certify that the corner location on this record was determined by me and/or under my direct supervision and that this U.S. Public Land Survey Monument Record is correct and complete to the best of my knowledge and belief.

Dated this 20th day of October, 2023.

*Aaron J. Austin*  
Aaron J. Austin, S-2922



Grant County Coordinates:  
NAD 83 (2011)  
Northing: 436,907.13  
Easting: 879,833.00

☉ = CORNER LOCATION

HISTORY OF CORNER ESTABLISHMENT:

Original corner was set in 1832 by Lucius Lyon.  
Larry Austin found a 3/4" Rebar and prepared a Survey Monument Record dated 7-20-1993.  
Daniel Paulson showed a P.K. Nail on a Survey filed in Book 26, Page 24.

DESCRIPTION OF CORNER EVIDENCE FOUND: (b) (f) (g) (h)

I found and measured a P.K. Nail before road construction of County Highway "H". I set a 1/2" x 4 3/4" Steel Cotton Gin Spike after construction in the same location. I set four witness corners after I verified the Monument's location with G.P.S. and E.D.M. methods.

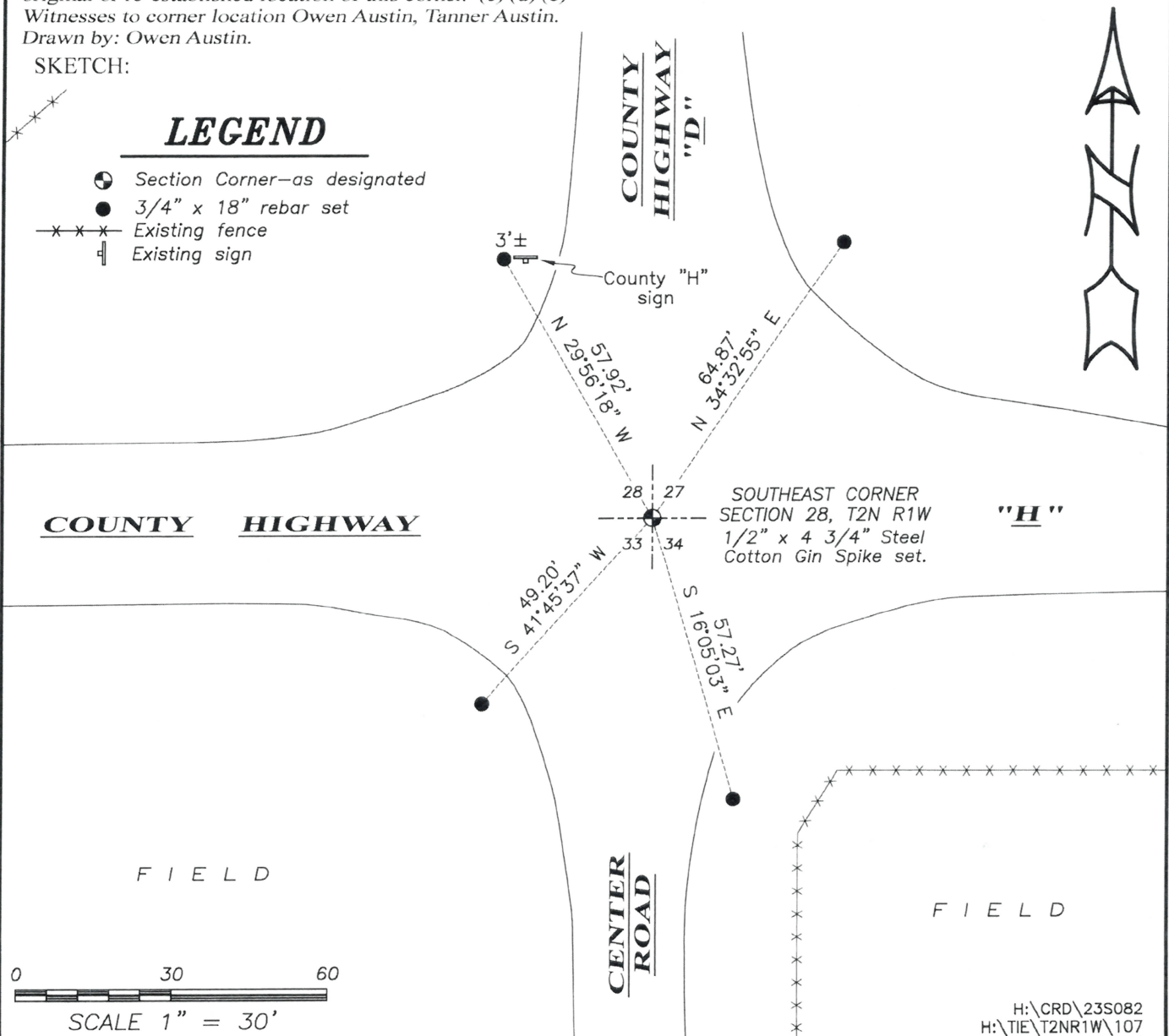
DESCRIPTION OF CORNER AND WITNESS MONUMENTS, references and accessories used to perpetuate the original or re-established location of this corner. (c) (d) (e)

Witnesses to corner location Owen Austin, Tanner Austin.  
Drawn by: Owen Austin.

SKETCH:

### LEGEND

- ☉ Section Corner—as designated
- 3/4" x 18" rebar set
- x-x-x Existing fence
- ⊥ Existing sign

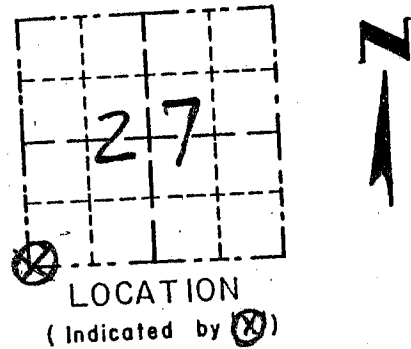


# GRANT COUNTY

## Survey Monument Record

TYPE OF MONUMENT 3/4" BAR  
 STATE PLANE COORDINATES: N \_\_\_\_\_  
 E \_\_\_\_\_  
 ELEVATION — M.S.L. DATUM: \_\_\_\_\_  
 THETA ANGLE: \_\_\_\_\_  
 FIELD BOOK: 93-07  
 PAGE 5

CORNER NO. 107  
 SECTION 27  
 TOWN 2 N  
 RANGE 1 W



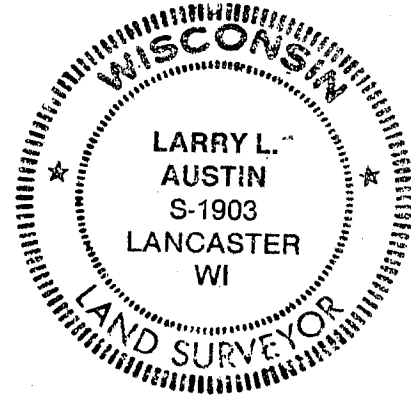
### BASIS FOR MONUMENT LOCATION

(Use reverse side if necessary)

Show info such as: History of corner, with reference to Vol. and pg., dates, surveyor; exact description of monument replaced; if location computed, by taped or EDM traverse; landowner, remarks, etc.

CORNER WAS FOUND 3/4" BAR  
 LOCATION CORRESPONDS TO LAST  
 AVAIL RECORD C.T.H. "D" PLAN  
 RS 0207 (5). LOCATION VERIFIED  
 BY EDM TRAVERSE OF THE AREA.

SEAL:



CERTIFIED CORRECT

*Larry L. Austin*  
 Registered Land Surveyor  
 DATE: 7/20/93

### TIE SKETCH

Show at least three (3) ties and monument  
 SCALE 1" = 100'

#### LEGEND

- 3/4" SOLID ROUND BAR FOUND
- 3/8" x 24" IRON BARS SET AS TIES - Next to R/W POSTS

