

U.S. PUBLIC LAND SURVEY MONUMENT RECORD - GRANT COUNTY, WI

Section 27, Town 2 North Range 1 West, Town of Smelser (a)

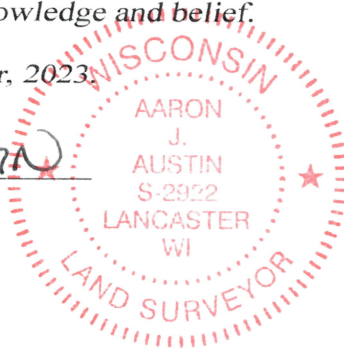
NOTE: This form is intended and designed to fulfill all requirements of the Wisconsin Administrative Code Chapter A-E 7.08, U.S. Public Land Survey Monument Record (3) (a) (b) (c) (d) (e) (f) (g) (h) (i).

CERTIFICATE: (i)

I, Aaron J. Austin, Wisconsin Professional Land Surveyor, do hereby certify that the corner location on this record was determined by me and/or under my direct supervision and that this U.S. Public Land Survey Monument Record is correct and complete to the best of my knowledge and belief.

Dated this 20th day of October, 2023.

Aaron J. Austin, S-2922



Grant County Coordinates: NAD 83 (2011) Northing: 436,940.42 Easting: 885,144.21

HISTORY OF CORNER ESTABLISHMENT:

Original corner was set in 1832 by Lucius Lyon. Larry Austin set a 1" Rebar with a Grant County Aluminum Cap and prepared a Survey Monument Record dated 12-12-2001. Daniel Paulson showed a P.K. Nail on a Survey filed in Book 26, Page 24.

DESCRIPTION OF CORNER EVIDENCE FOUND: (b) (f) (g) (h)

I found and measured a P.K. Nail before road construction of County Highway "H". I set a 1/2" x 4 3/4" Steel Cotton Gin Spike after construction in the same location. I found four witness corners and established one additional after I verified the Monument's location with G.P.S. and E.D.M. methods.

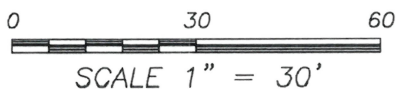
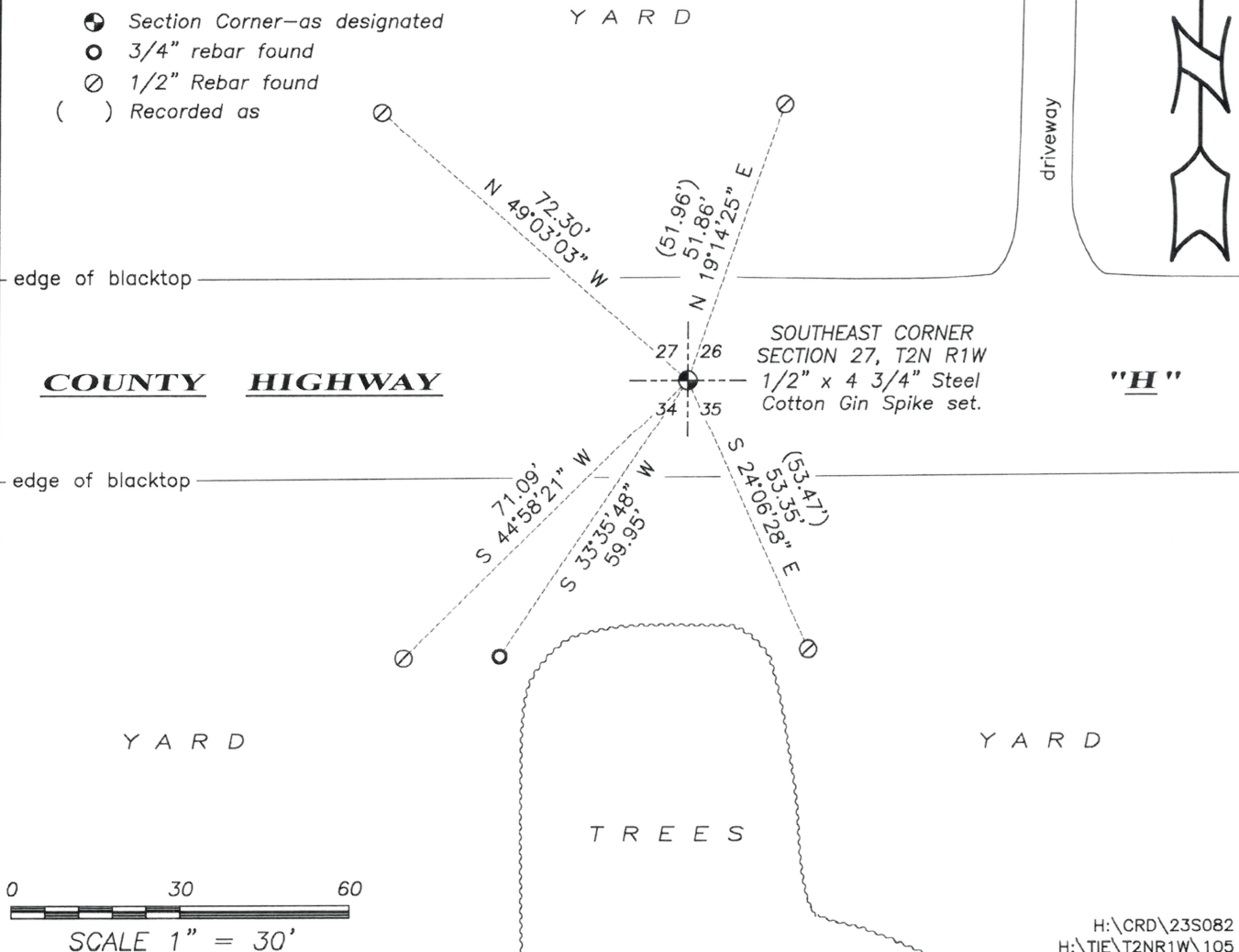
DESCRIPTION OF CORNER AND WITNESS MONUMENTS, references and accessories used to perpetuate the original or re-established location of this corner. (c) (d) (e)

Witnesses to corner location Owen Austin, Tanner Austin. Drawn by: Owen Austin.

SKETCH:

LEGEND

- Section Corner—as designated
3/4" rebar found
1/2" Rebar found
Recorded as



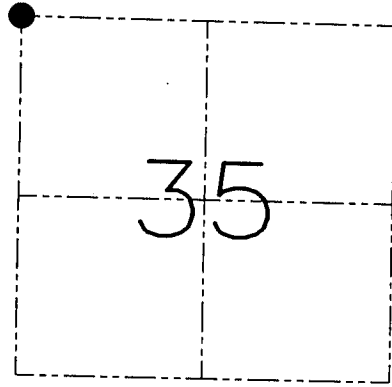
U.S. PUBLIC LAND SURVEY MONUMENT RECORD - GRANT COUNTY, WI
 Section 35, Town 2 North Range 1 West, Town of Smelser

CERTIFICATE

I, Larry L. Austin, do hereby certify that the corner location on this record was determined by me and/or under my direct supervision and that this U.S. public land survey monument record is correct and complete to the best of my knowledge and belief.

Dated this 12th day of December, 2001

Larry L. Austin
 Larry L. Austin S-1903



● = CORNER LOCATION

HISTORY OF CORNER ESTABLISHMENT

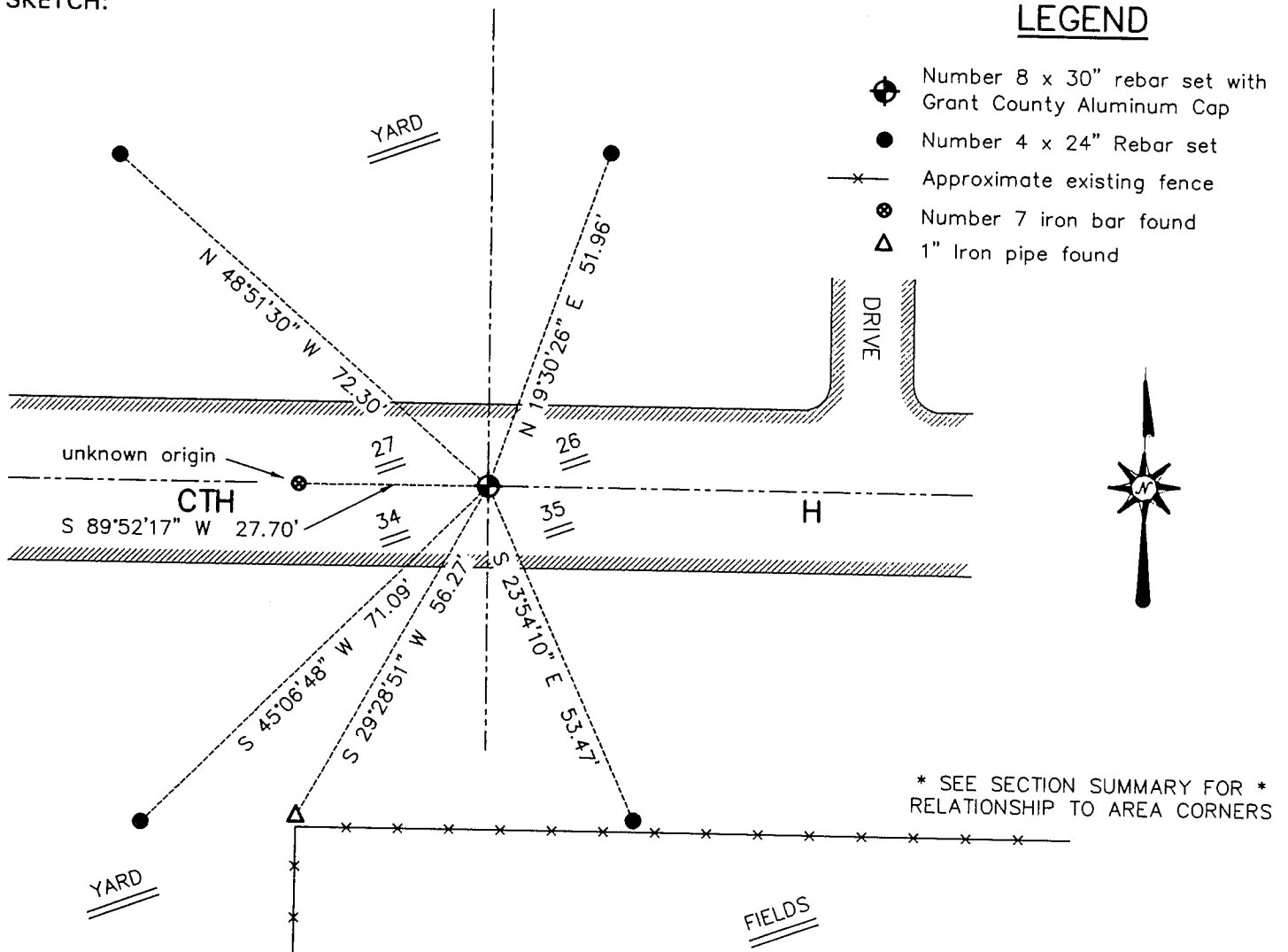
Corner was originally set in 1832 by Lucius Lyon. In March 2001 I found a #7 iron bar and fence South and accepted it.

DESCRIPTION OF CORNER EVIDENCE FOUND

I found the #7 iron bar and did not accept it's location. After an extensive research of the deeds of adjoining landowners, I reestablished the corner location proportionately between the North 1/4 of Section 34 and the Northeast corner of Section 35. This location fit local occupation and deed evidence. Verified this new location using EDM & GPS methods.

DESCRIPTION OF CORNER AND WITNESS MONUMENTS, references and accessories used to perpetuate the original or re-established location of this corner. Witnesses to the corner location Bobby Sedgwick & Shane Austin & Shelby Blindert

SKETCH:



SKETCH NOT TO SCALE

AUSTIN ENGINEERING, LLC

4211 HWY 81 EAST, LANCASTER, WI 53813
 PHONE 608-723-6363 FAX 608-723-6702

FIELDBOOK: SDR33, 2122
 G: \T1NR1W\15
 C: \SWA\TIE\T2NR1W\105
 CREW: BS-SB-SA

DRAWN BY: SW AUSTIN
 APPROVED: LL AUSTIN

CORNER NUMBER 105